

# Circulatory system

---

Cardiovascular system ▶

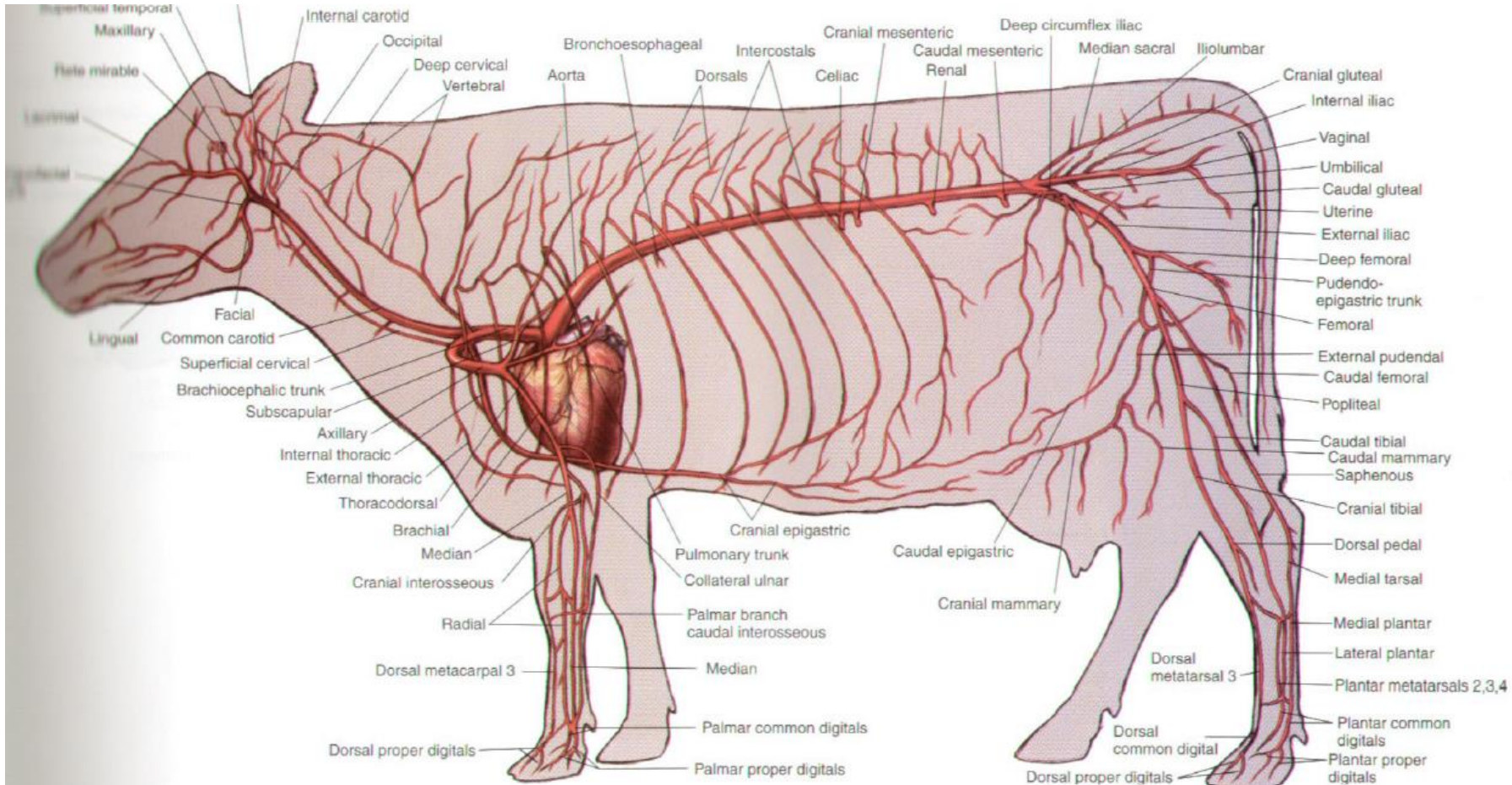
A-Heart ▶

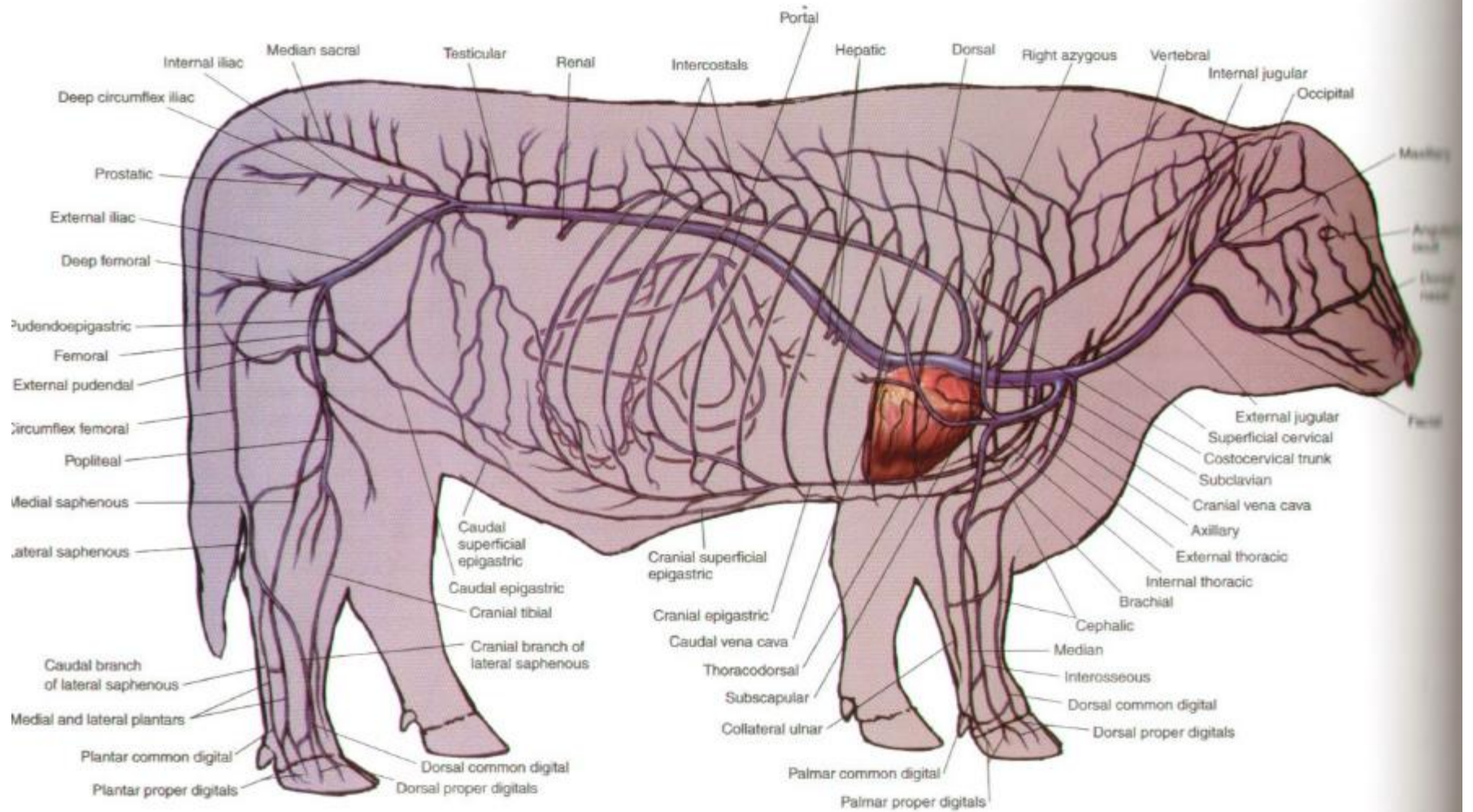
B-Blood vessels(Artery-Vein-Capillary)

Lymphatic system

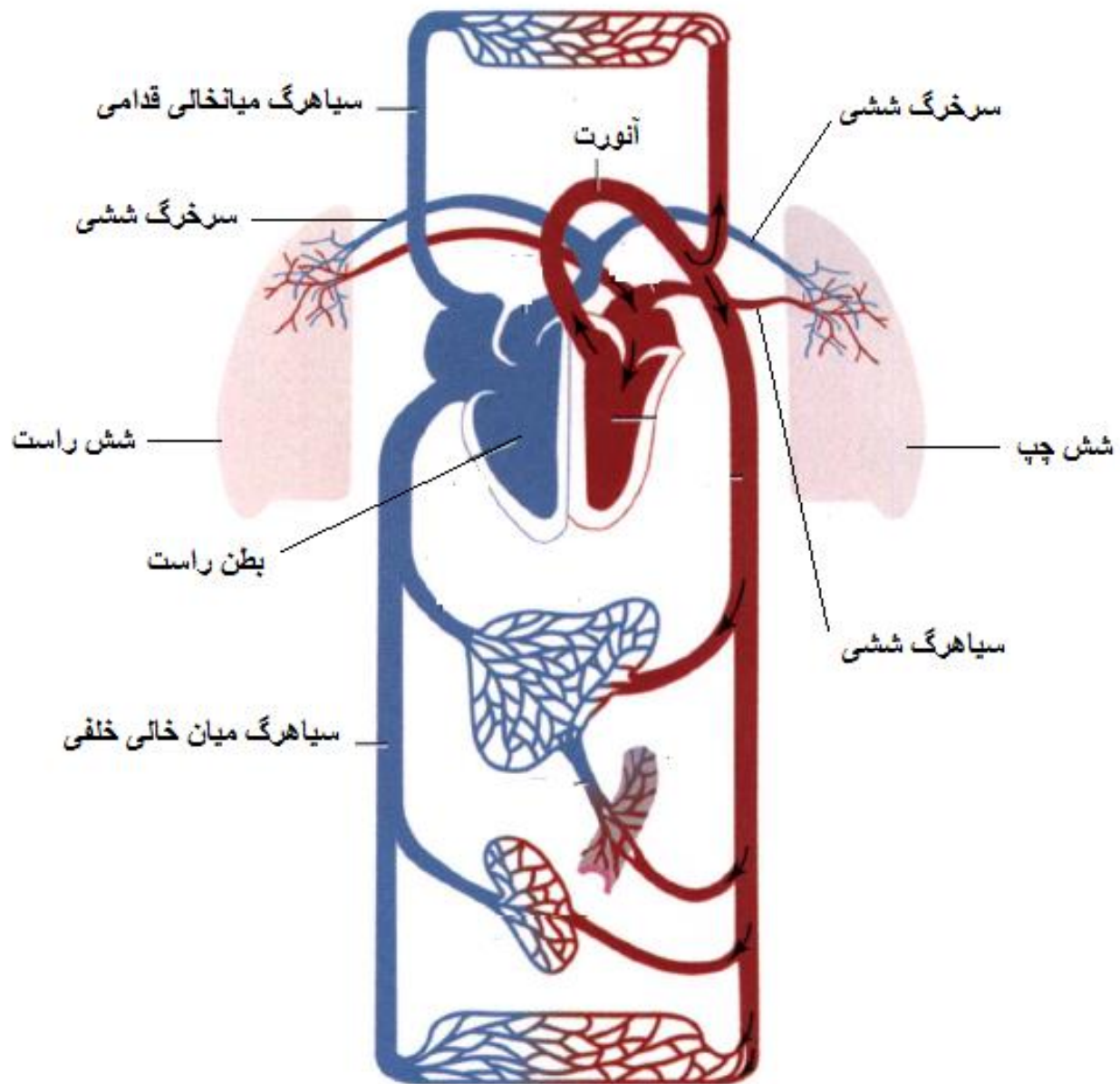


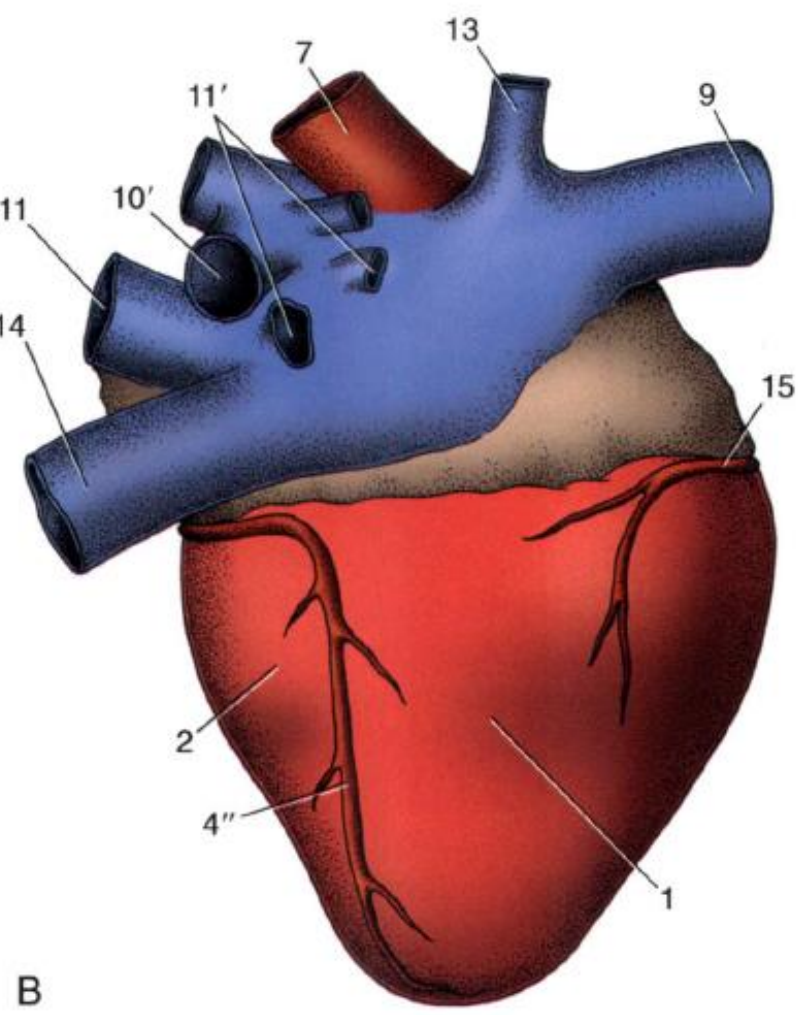
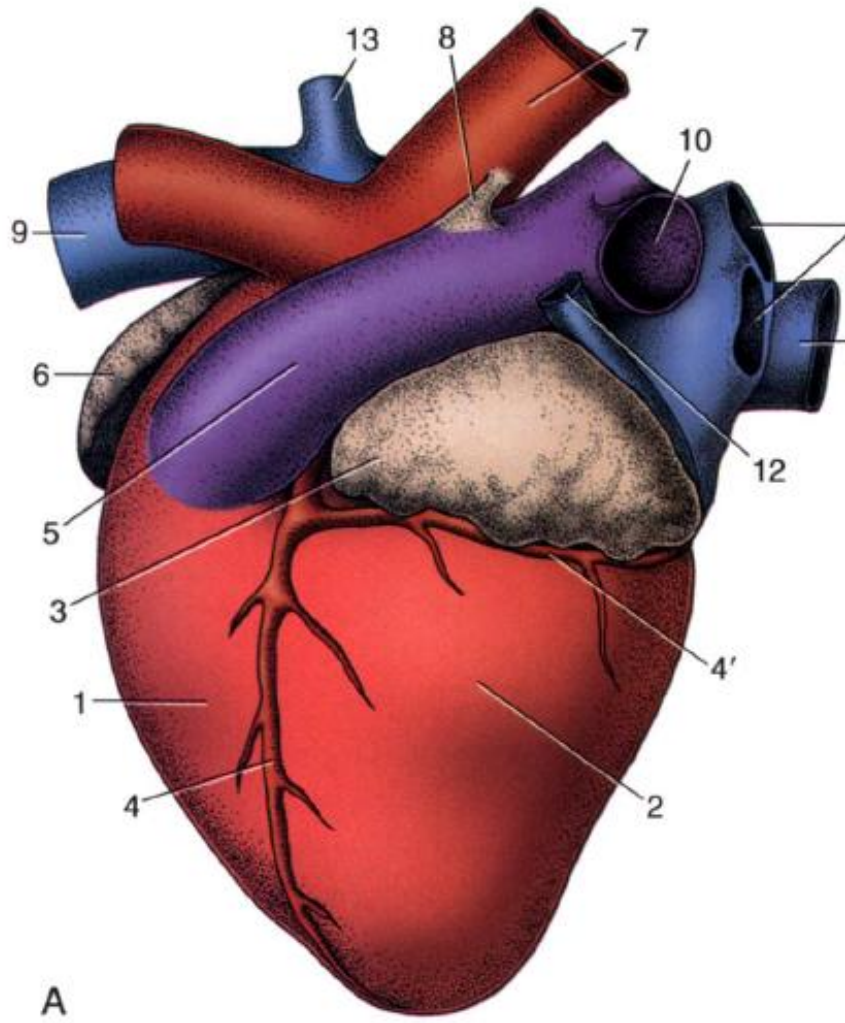
# دستگاه قلبی - عروقی

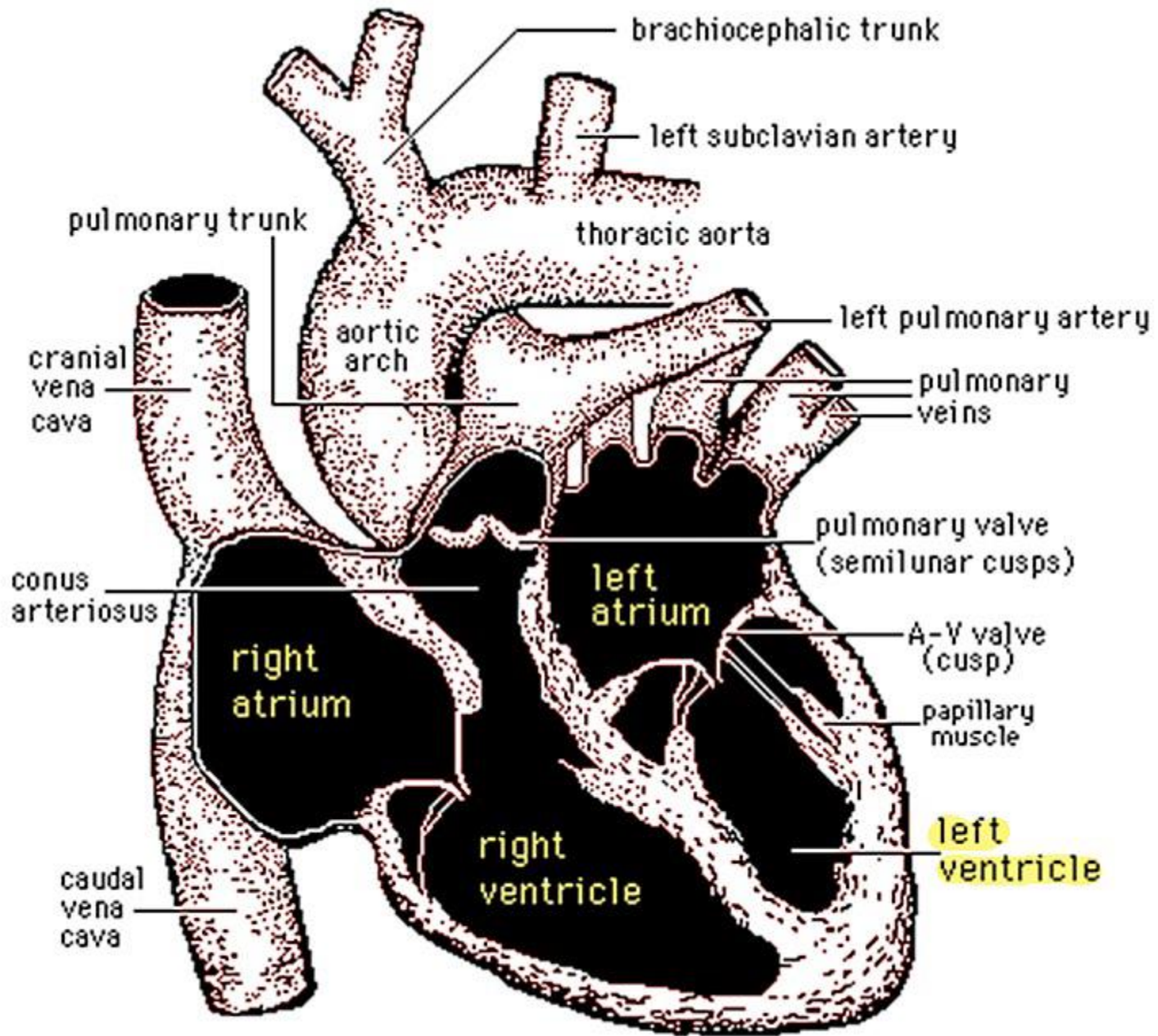




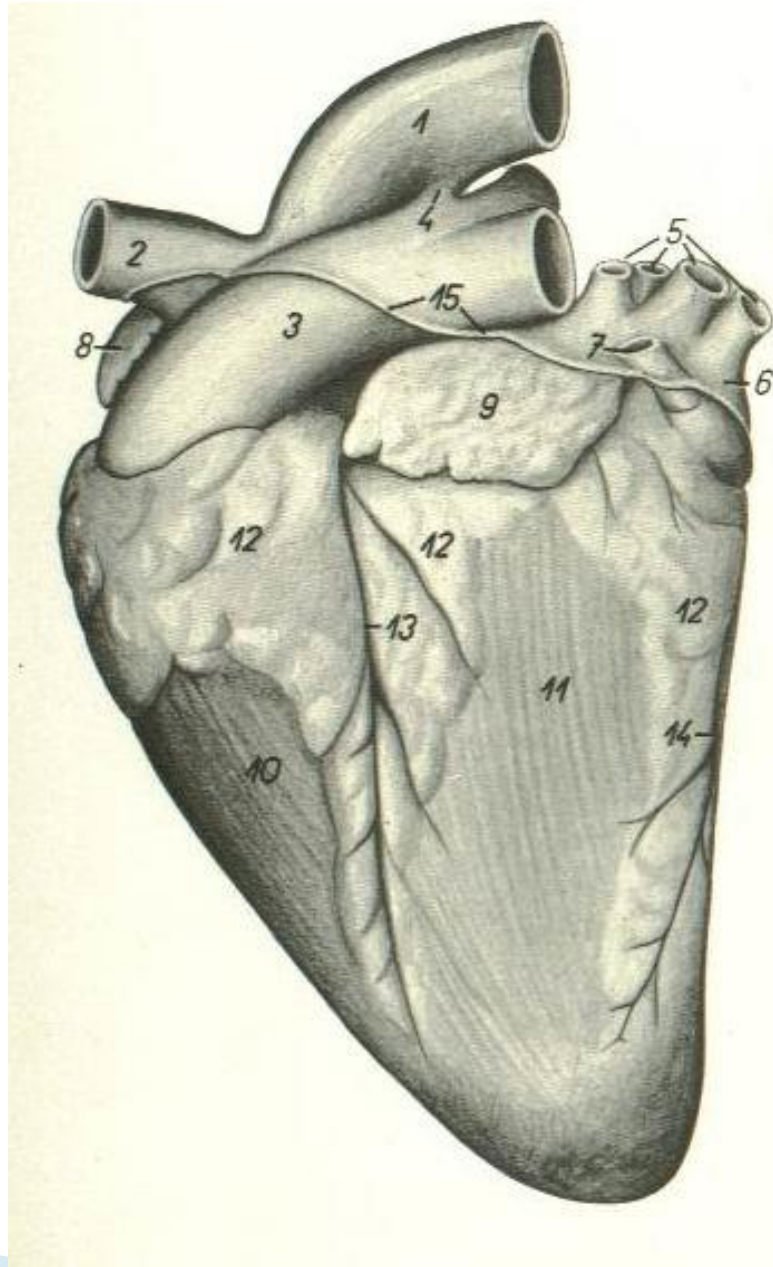


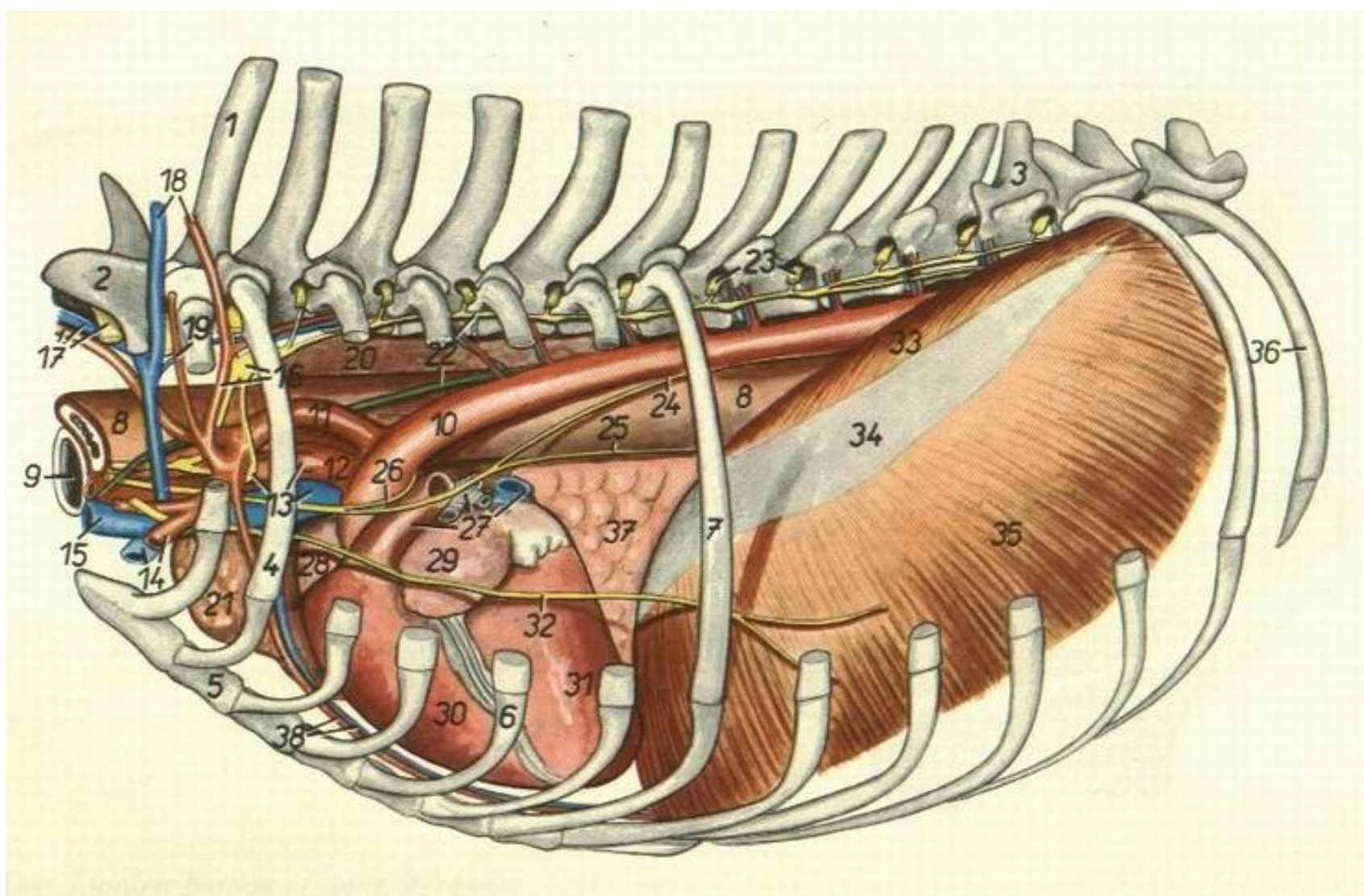




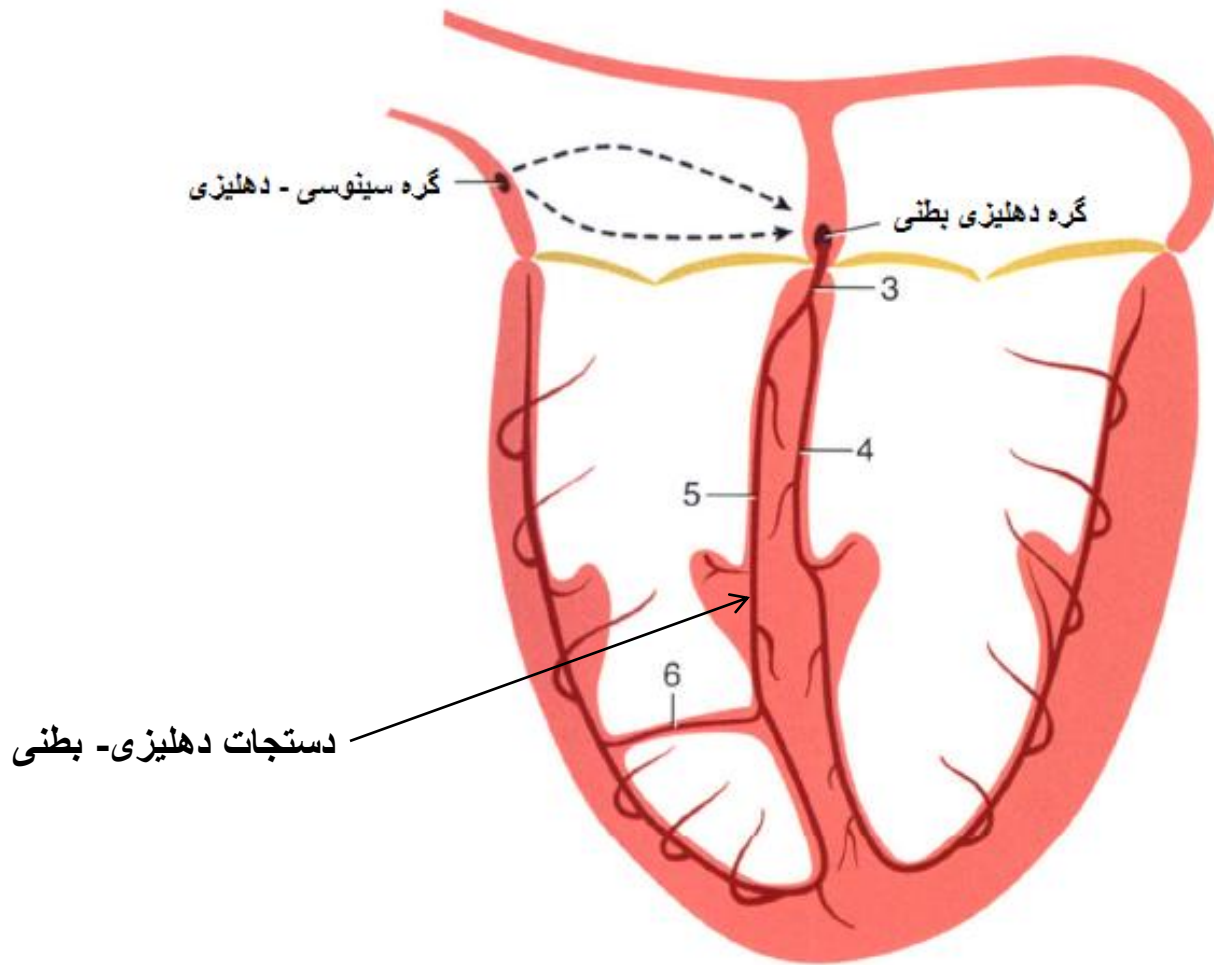




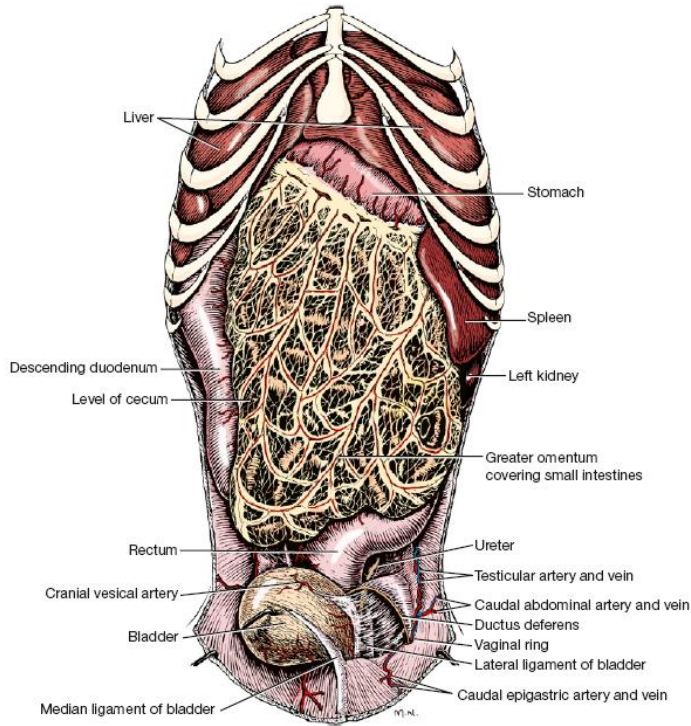




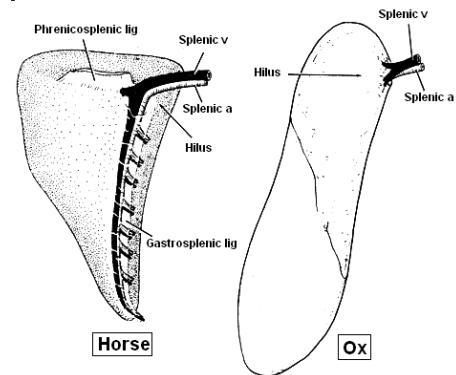
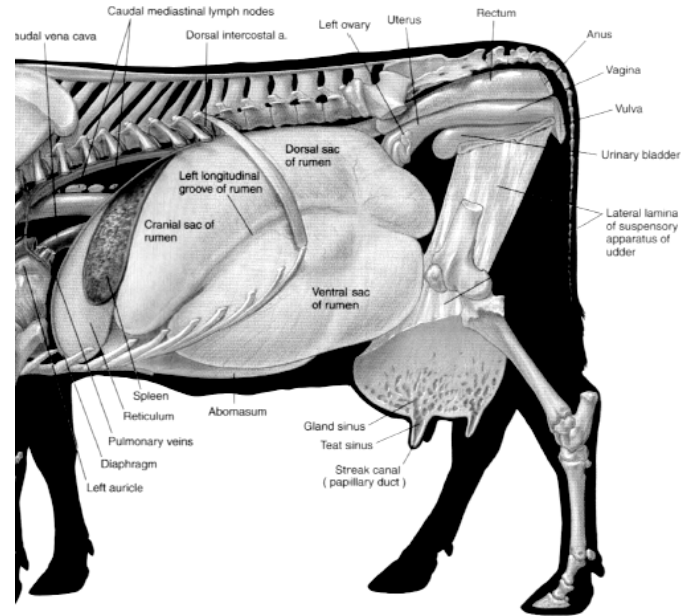


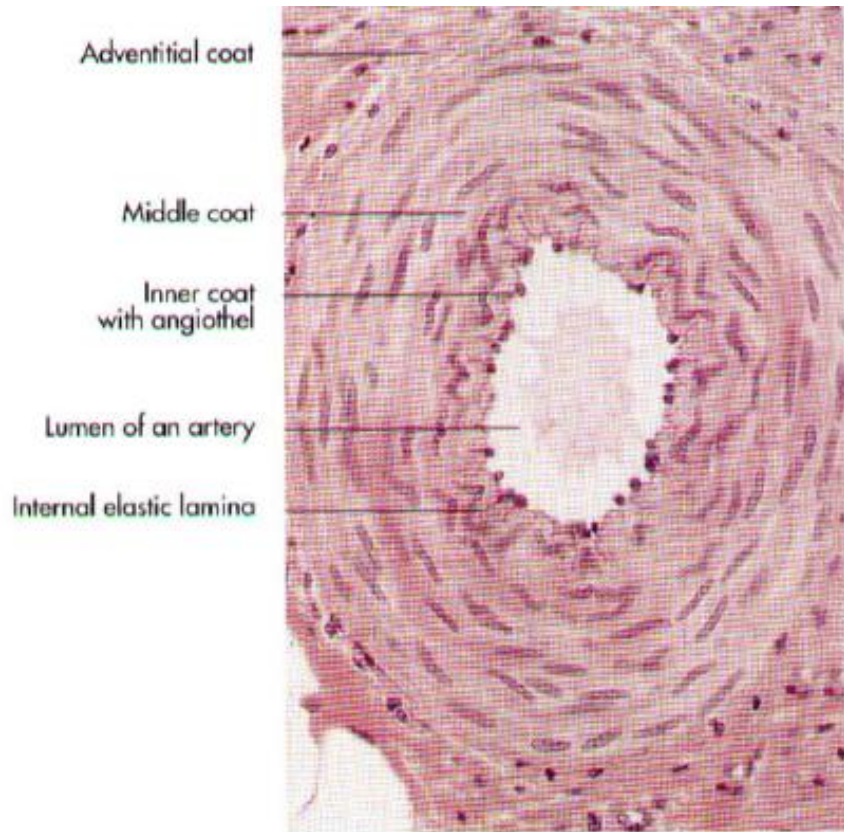


# طحال

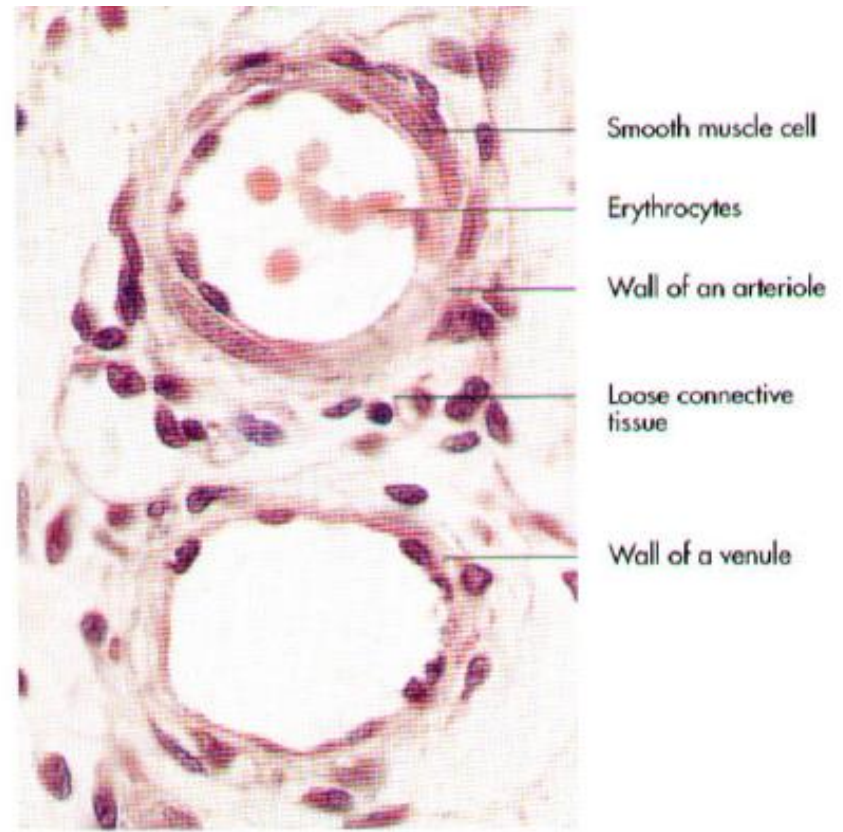


# Spleen



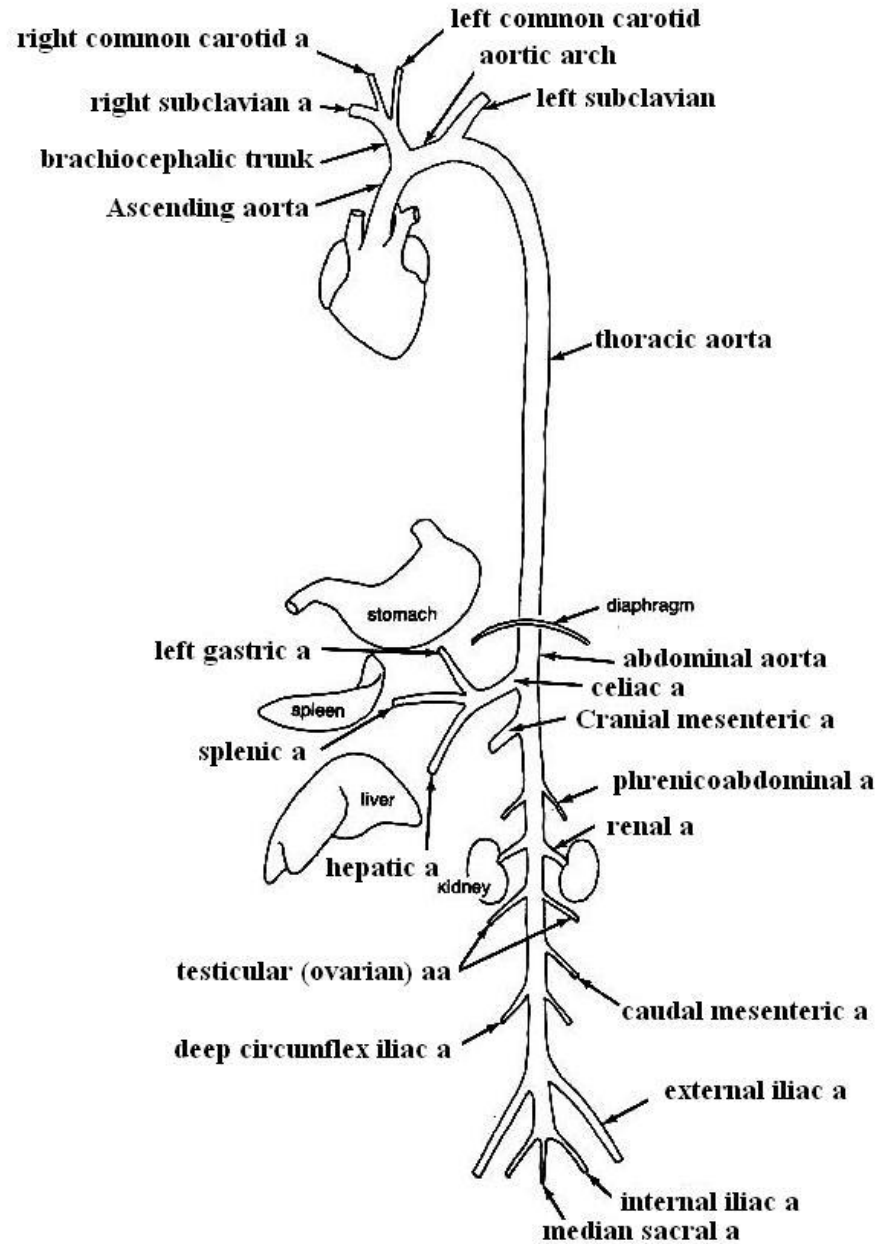


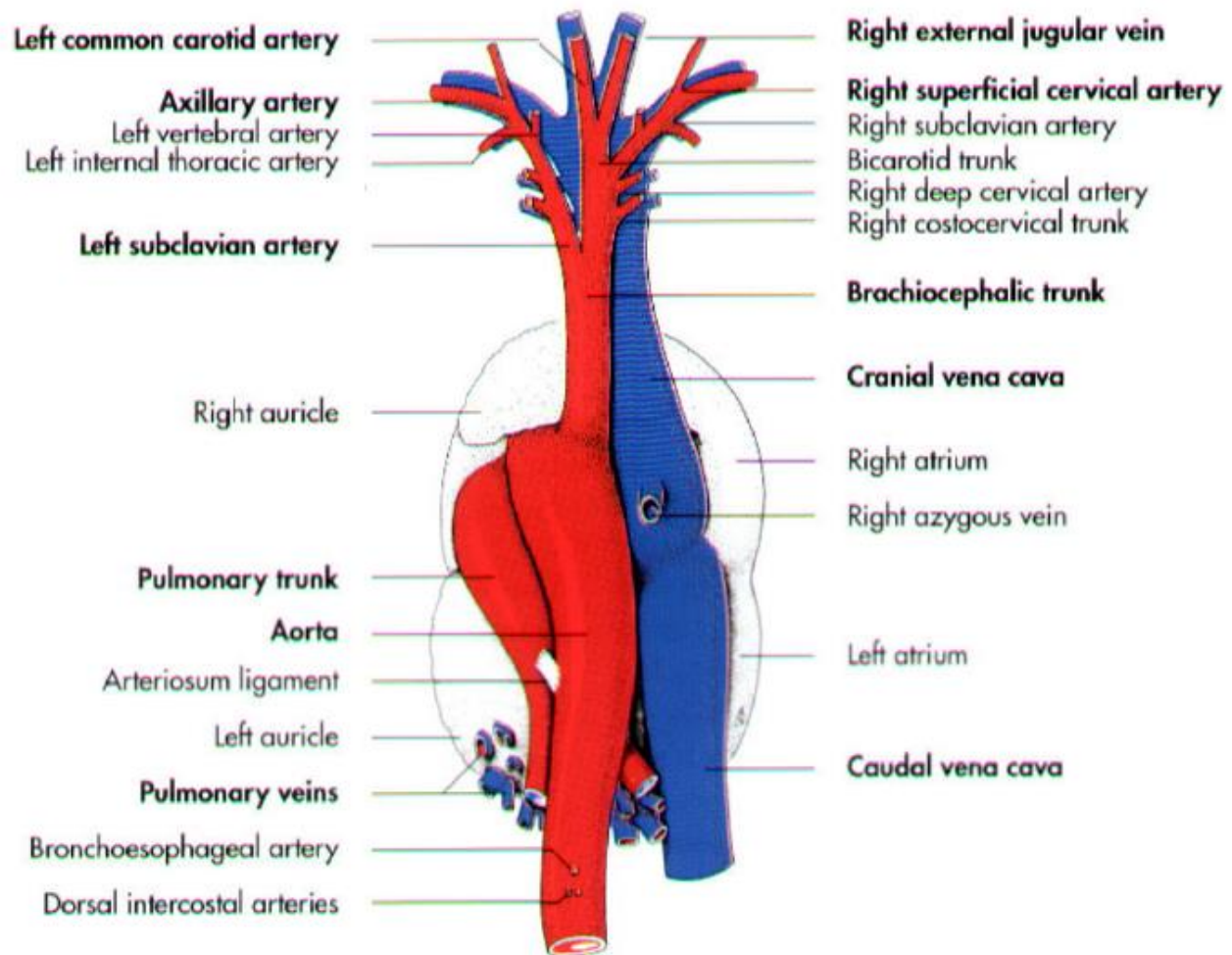
**Fig. 12-14.** Histological section of an artery.

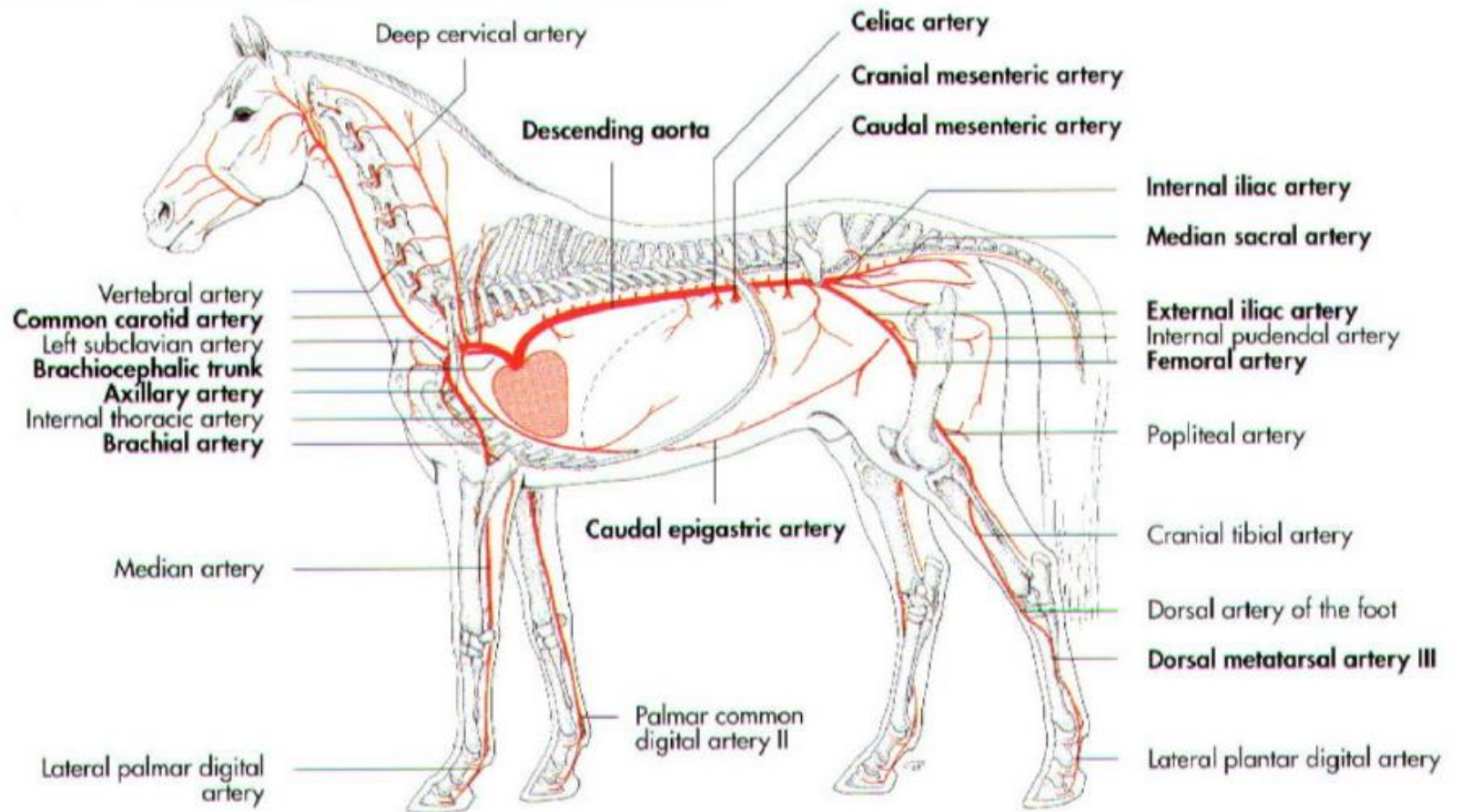


**Fig. 12-15.** Histological section of an arteriole and a venule.

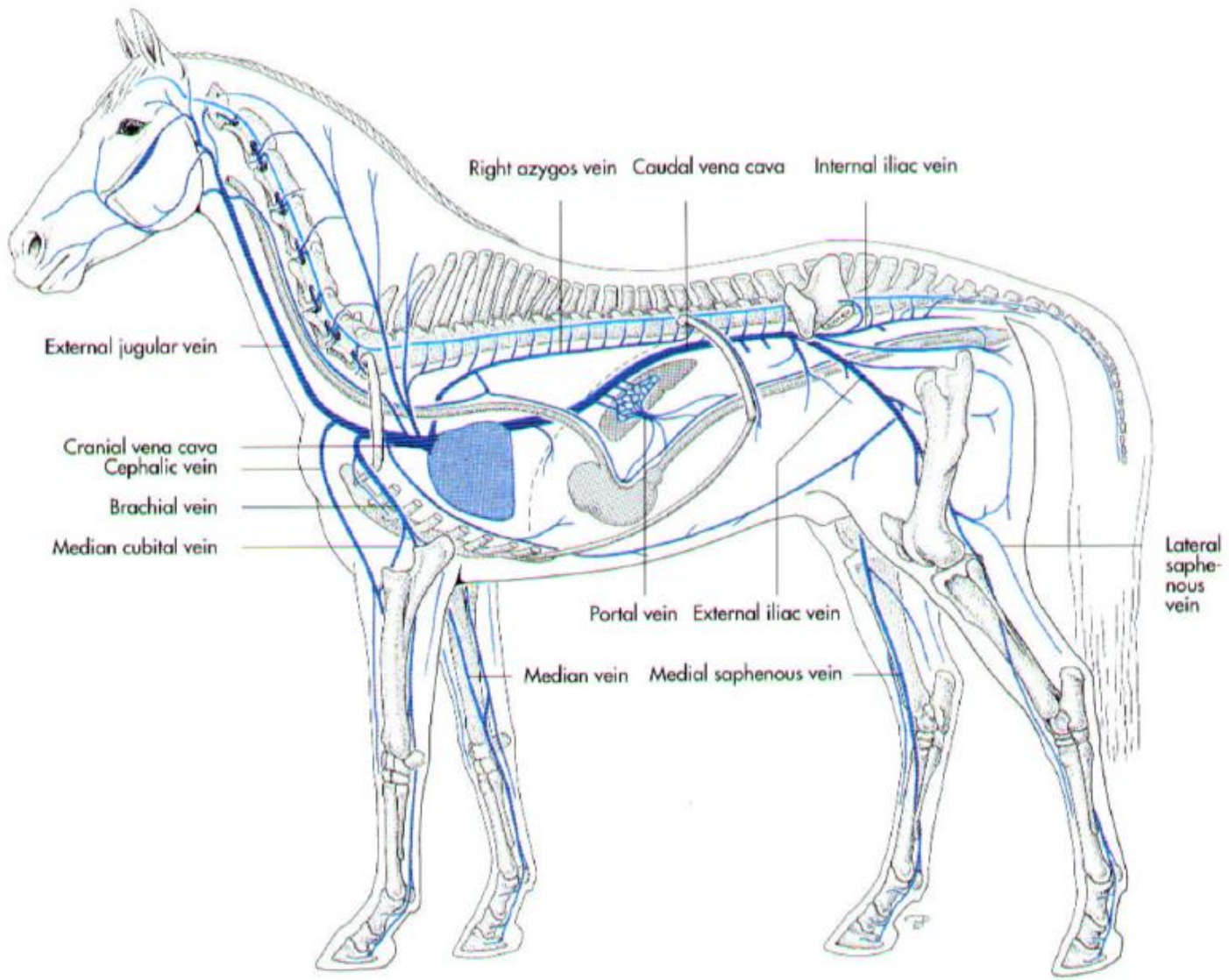












# سیاہرگ باب

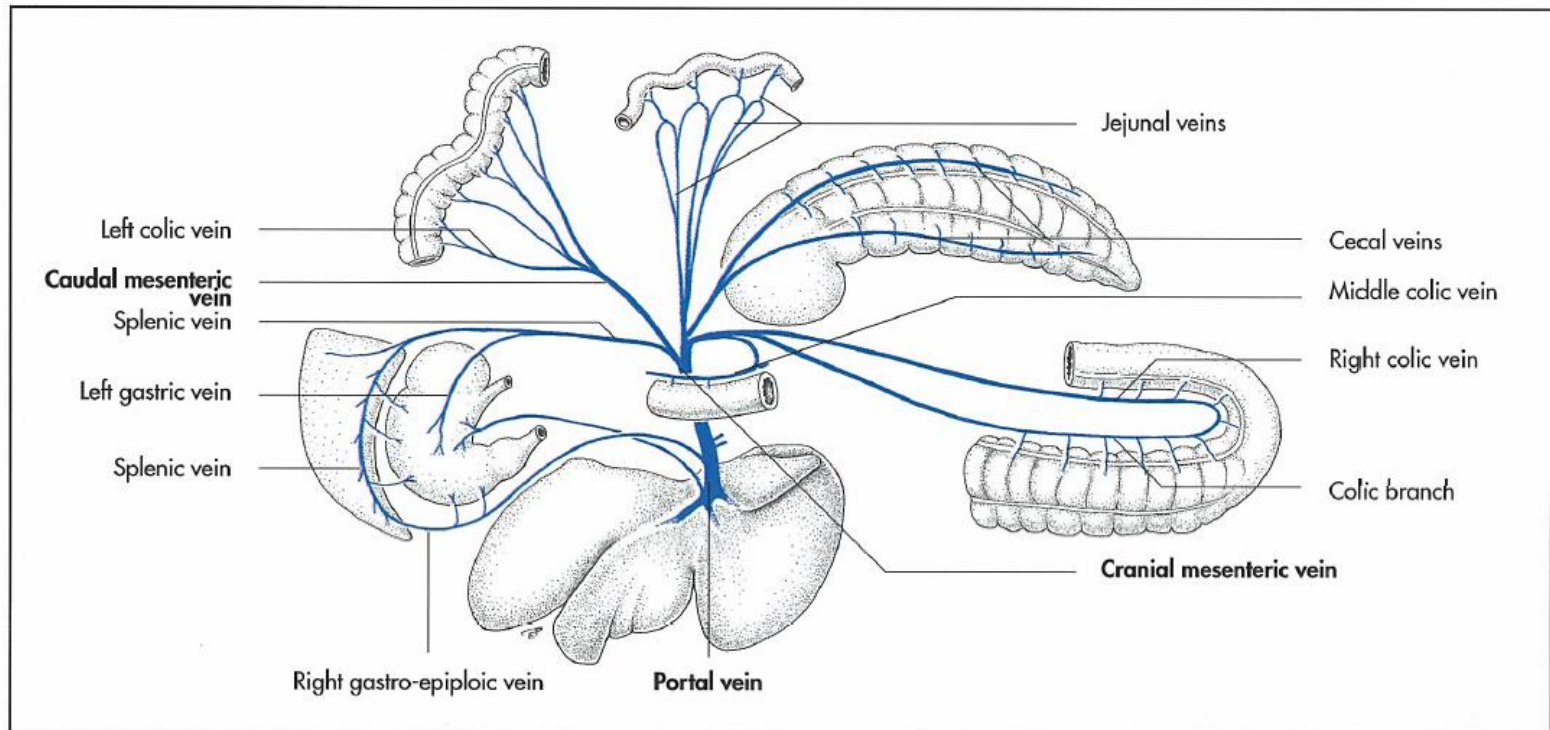


Fig. 12-46. Hepatic portal system of the horse (Ghetie, 1955).