

# Circulatory system

---

Cardiovascular system ▶

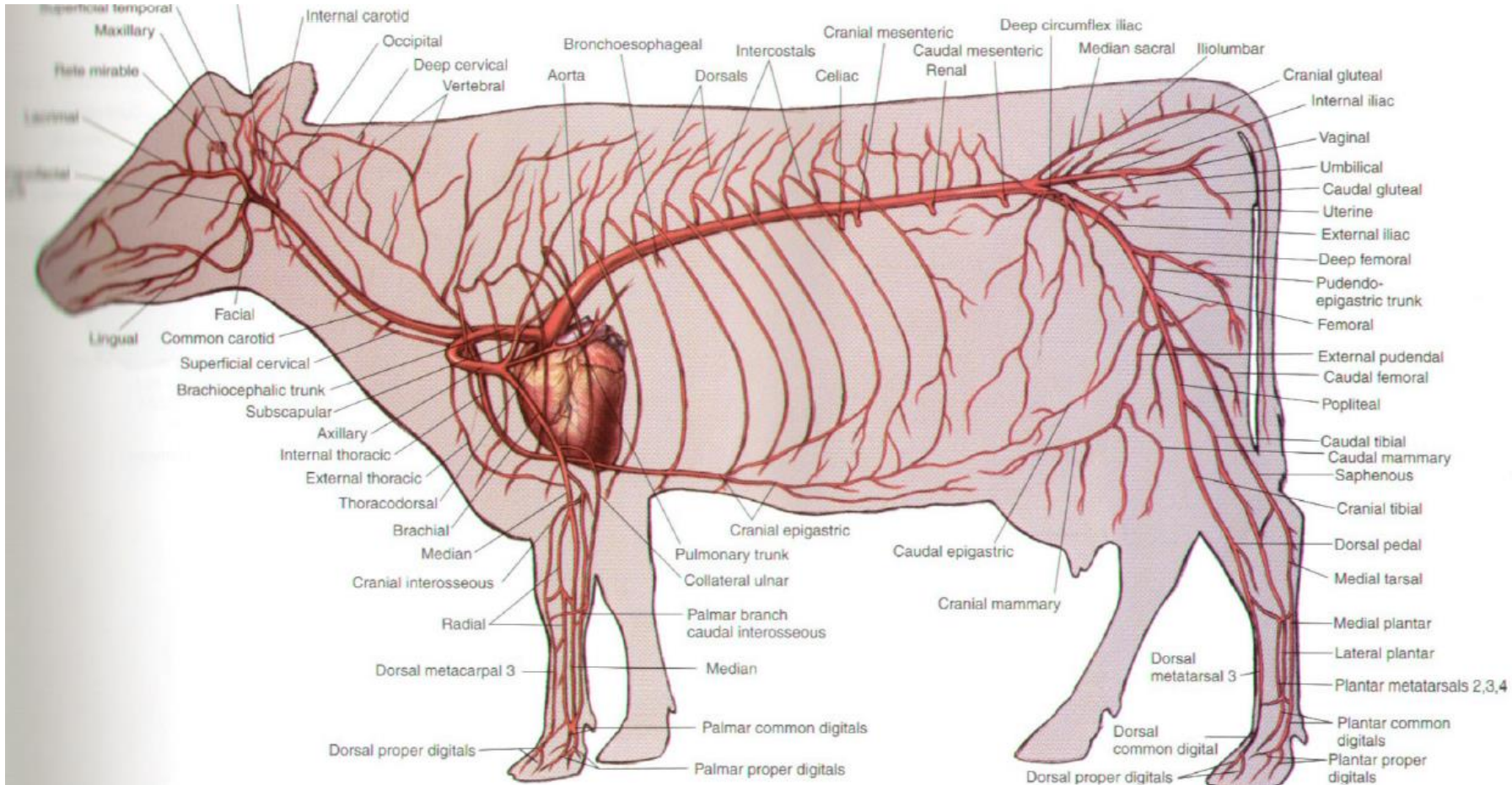
A-Heart ▶

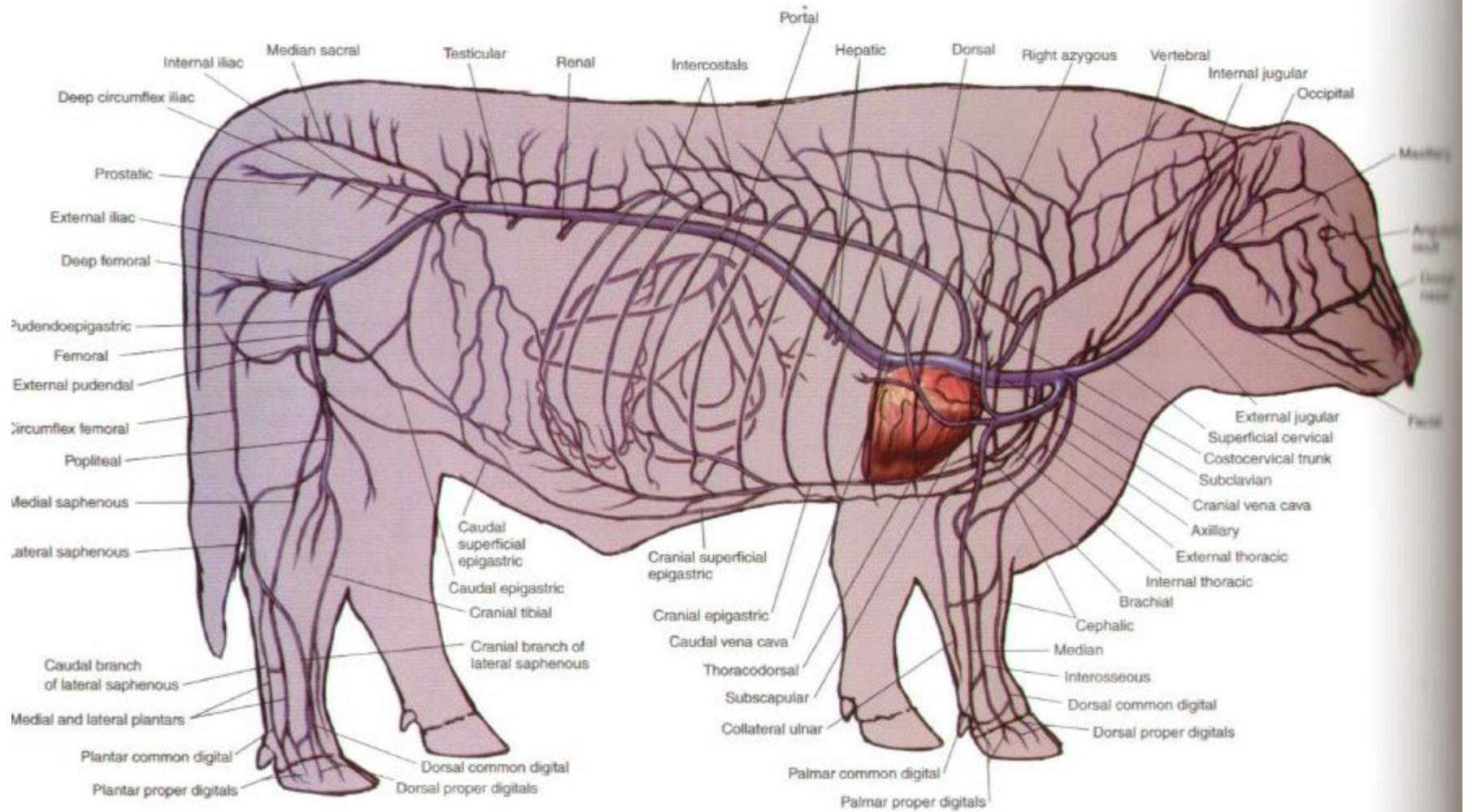
B-Blood vessels(Artery-Vein-Capillary)

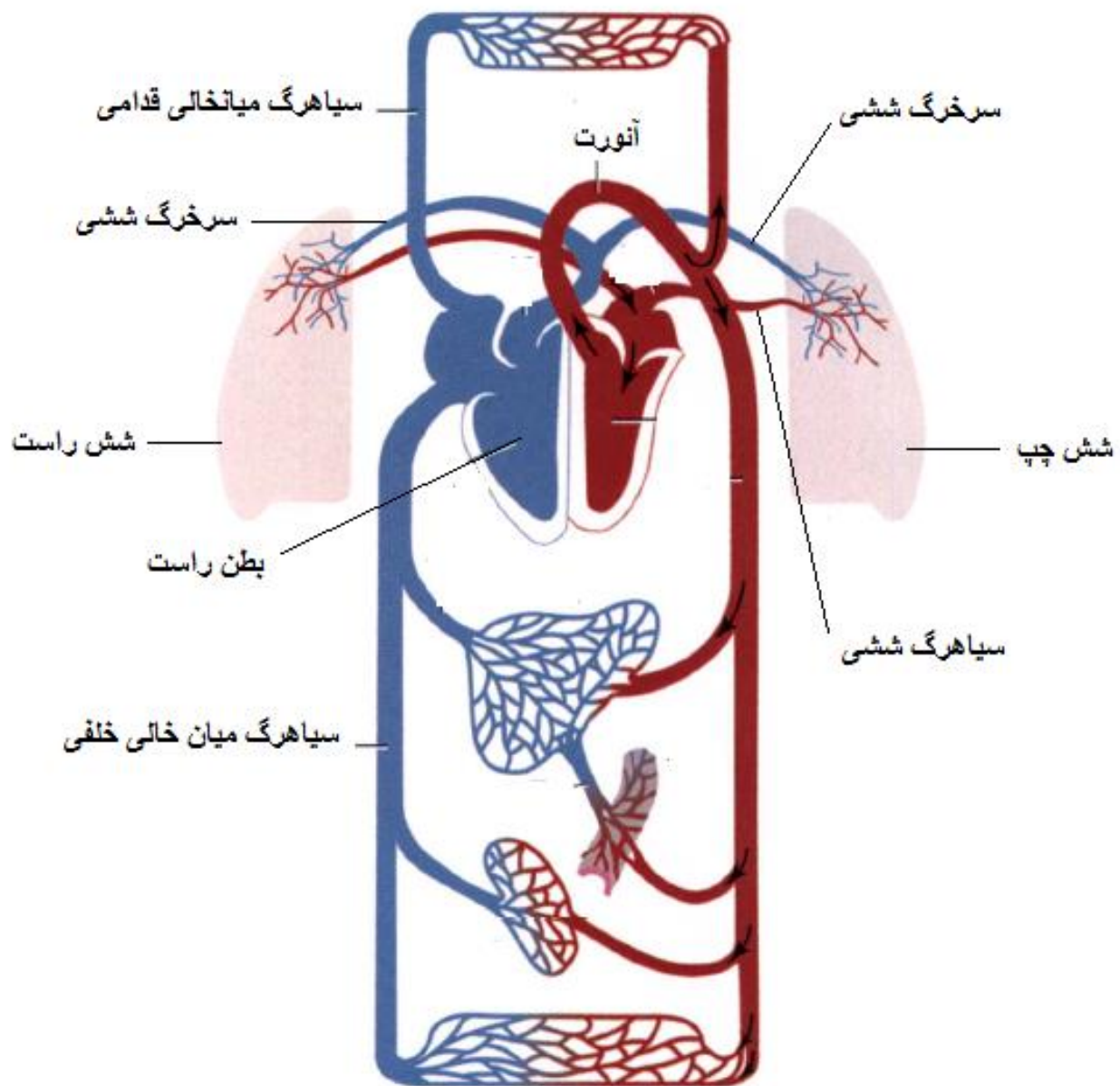
Lymphatic system

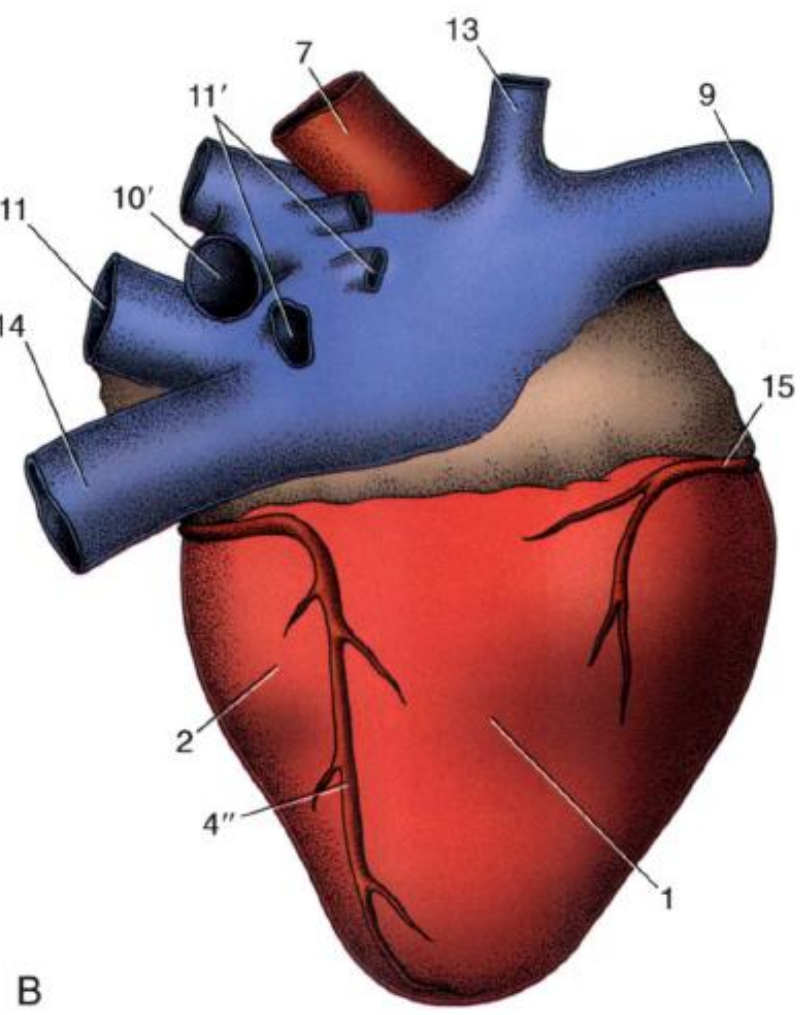
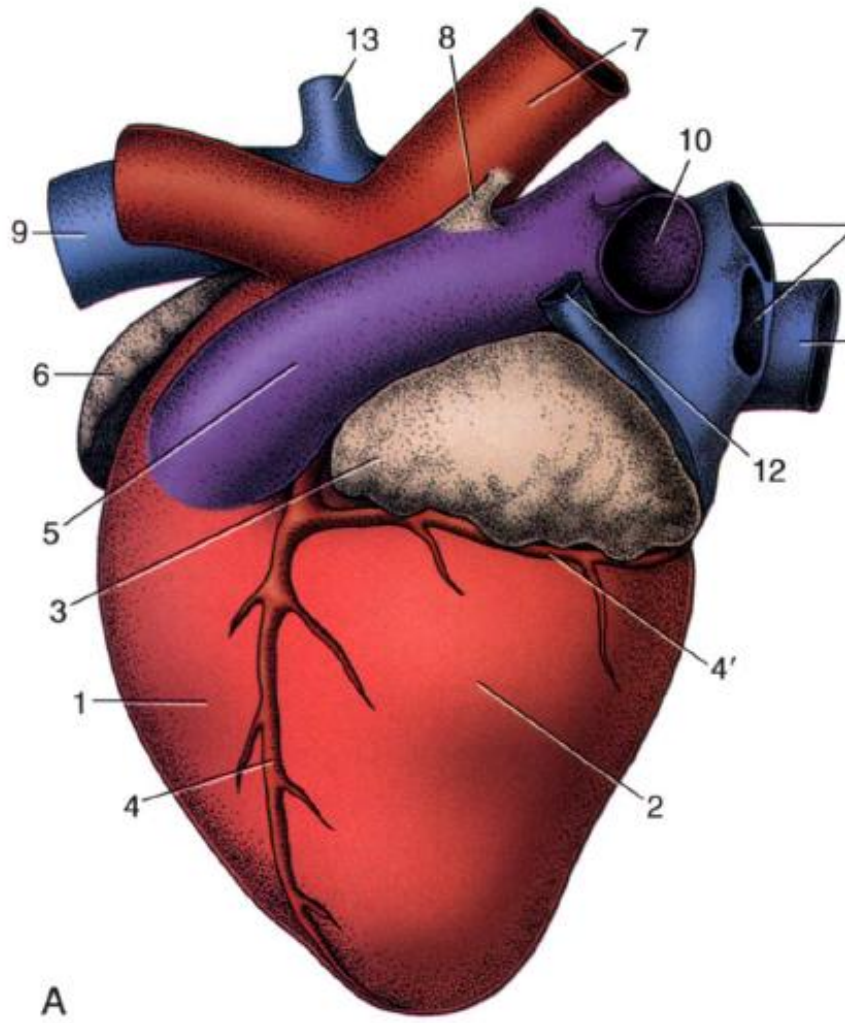


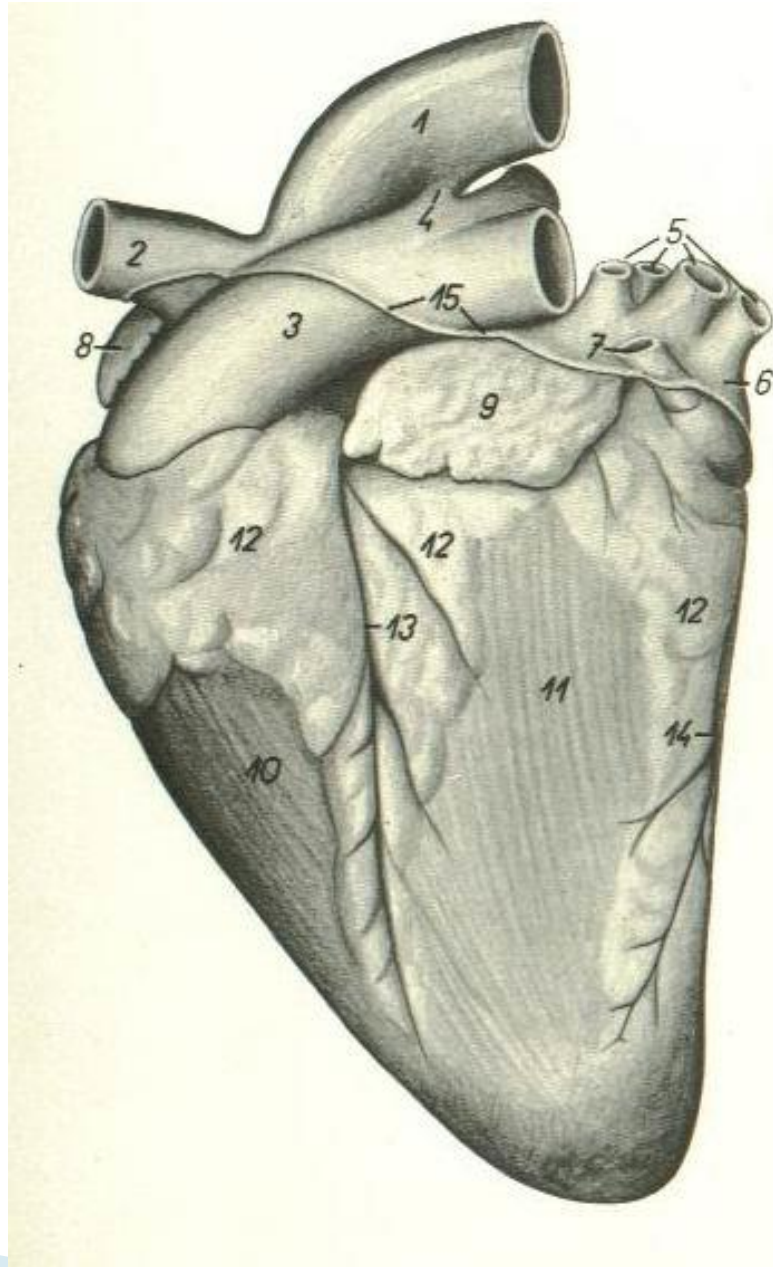
# دستگاه قلبی - عروقی

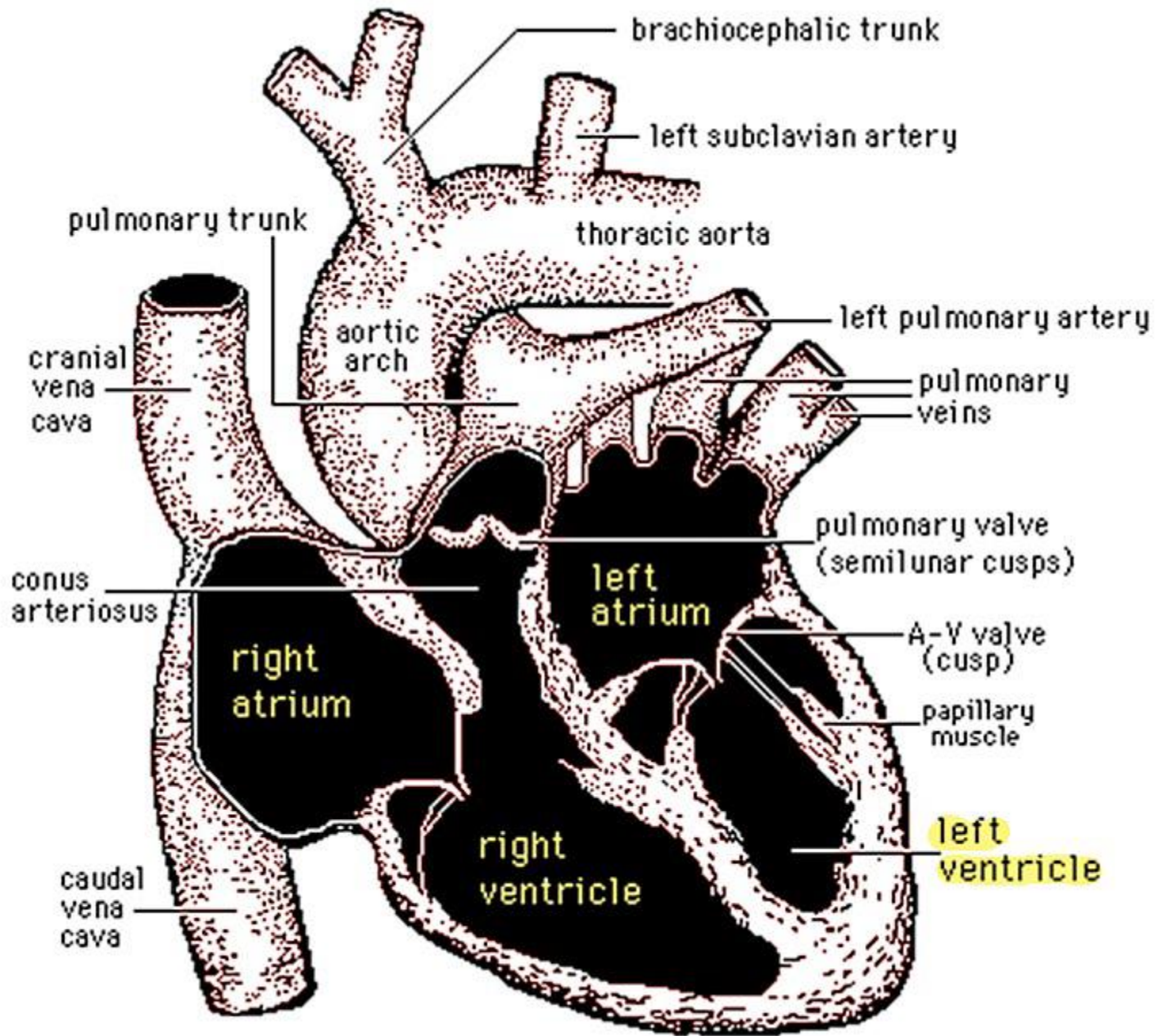


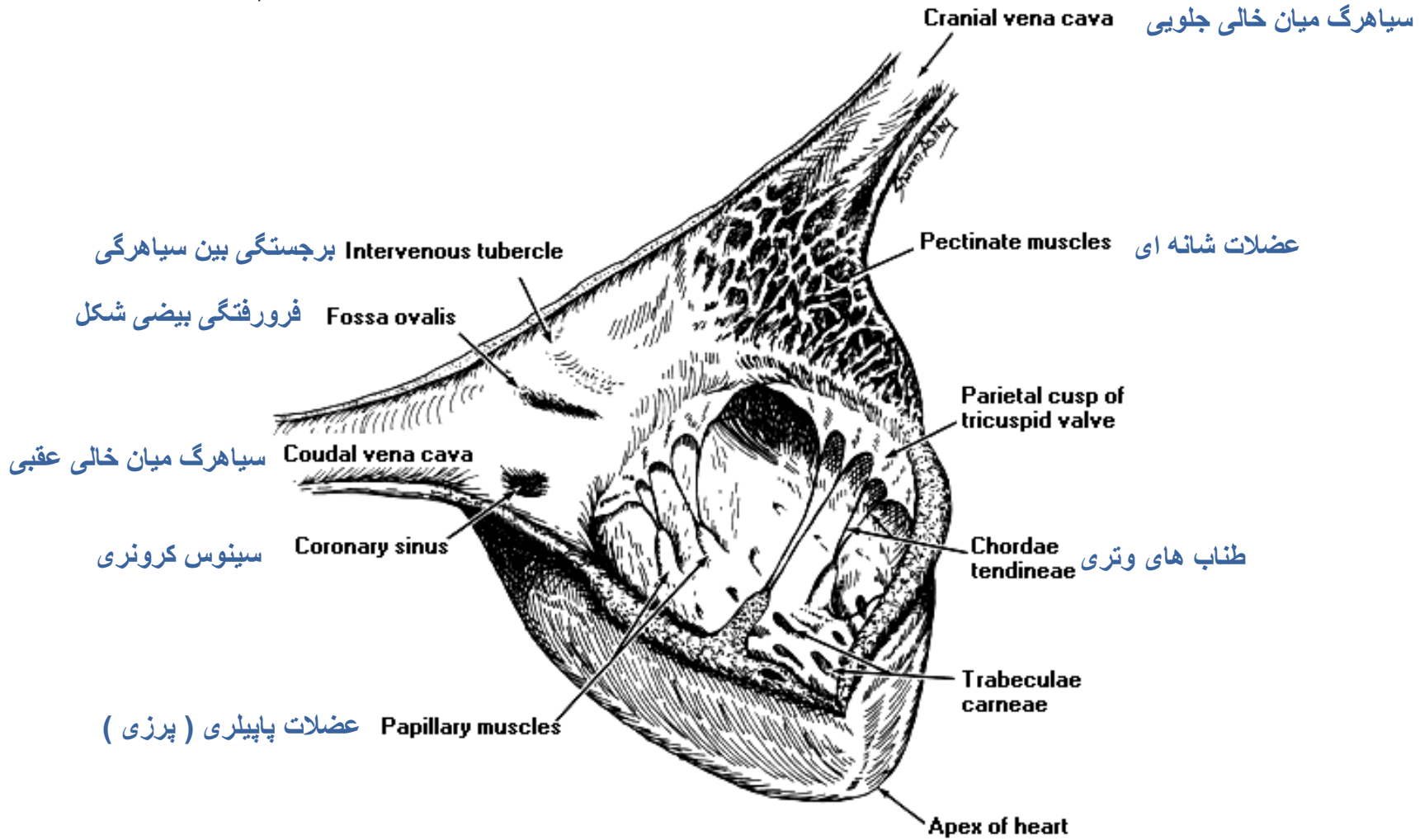






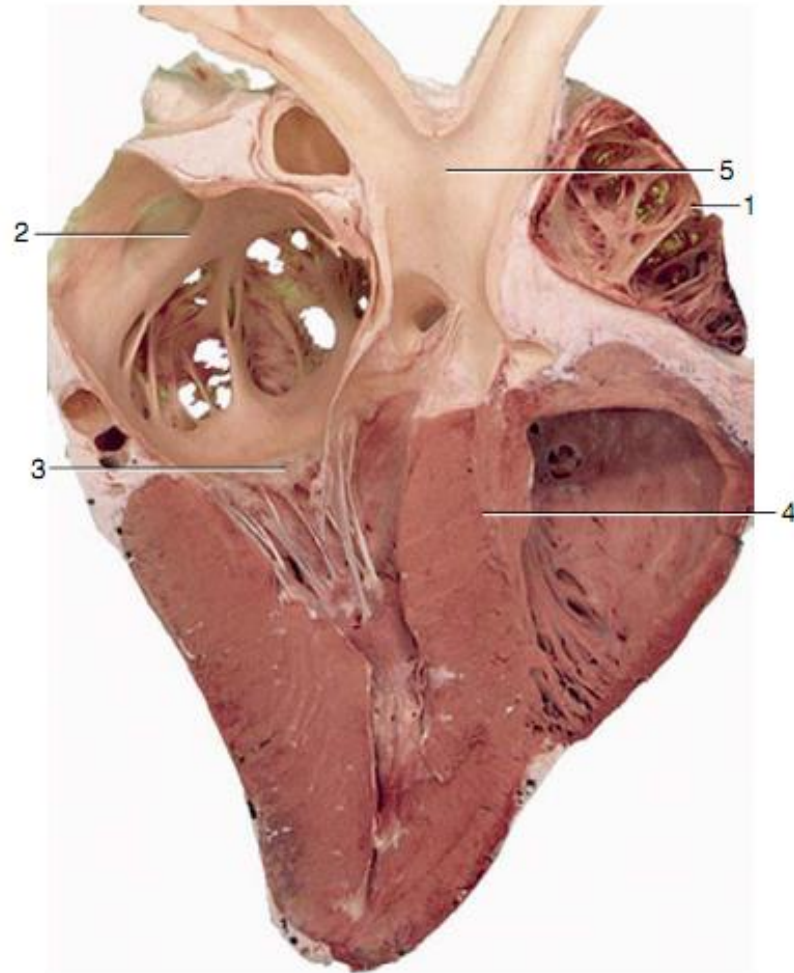




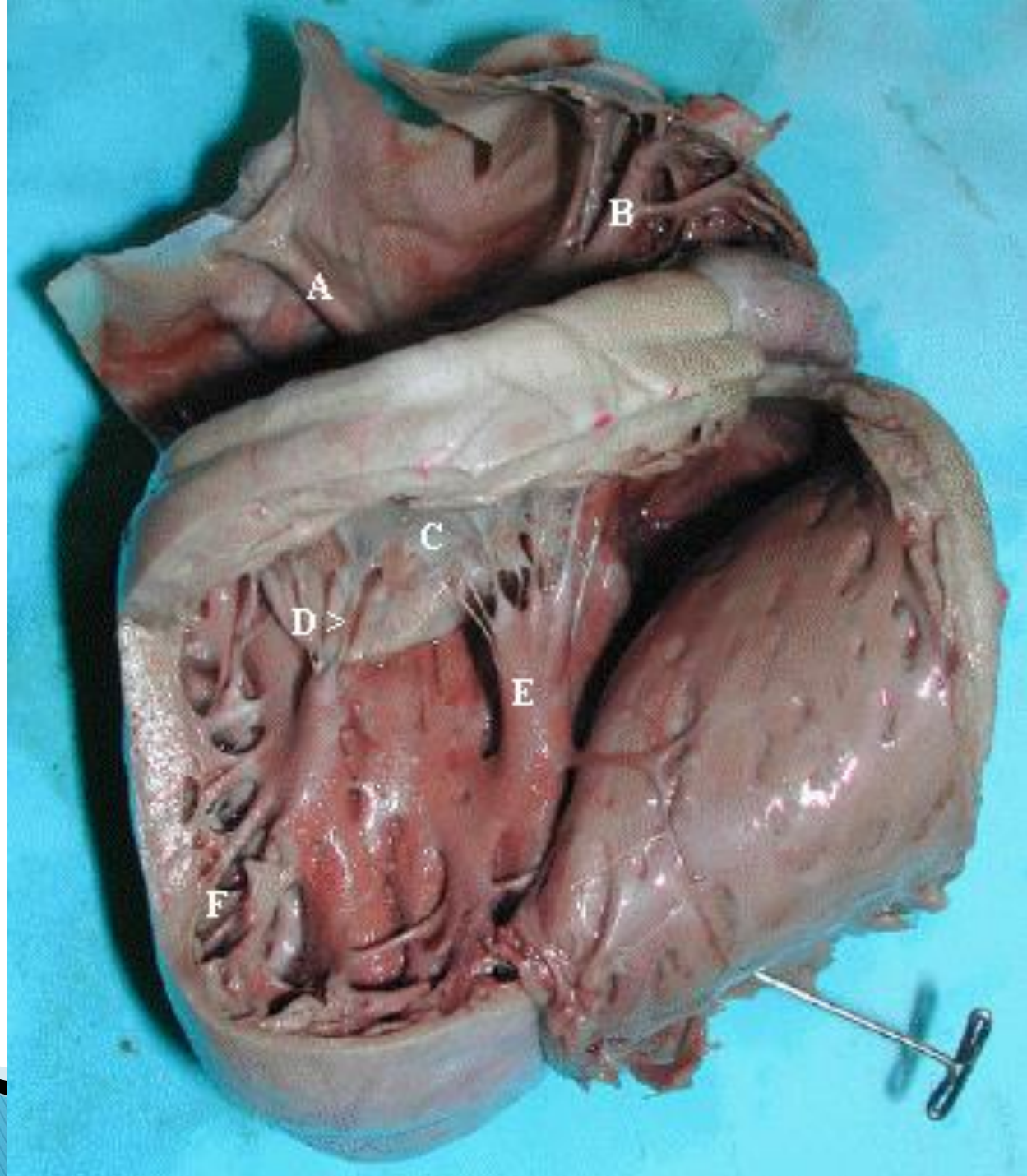


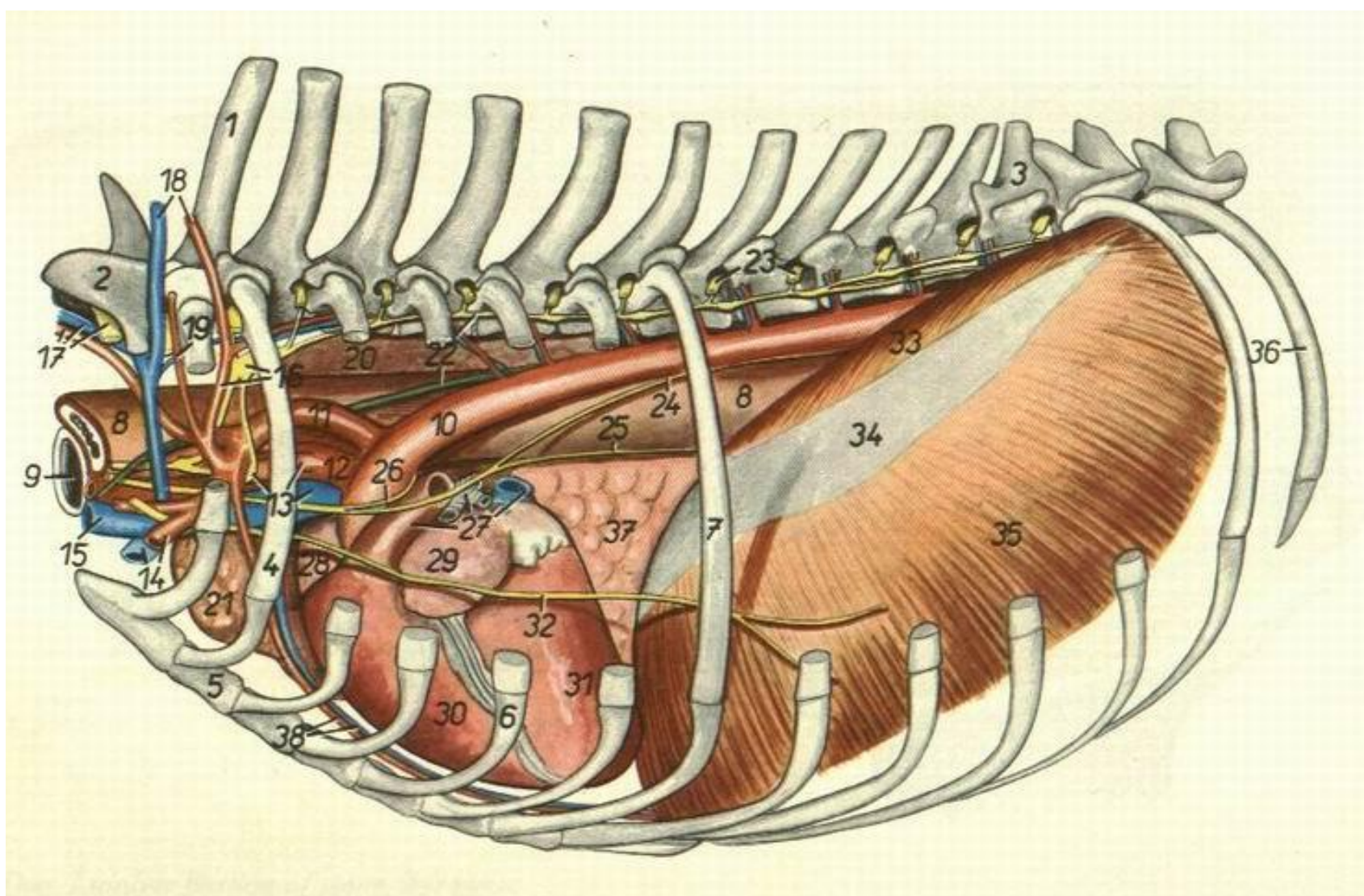
## دهلیز راست و بطن / Right Atrium and ventricle





**Figure 7-11** Section of the heart (cow). 1, Right auricle; 2, left atrium; 3, left atrioventricular valve; 4, interventricular septum; 5, aorta.





Pericardial cavity

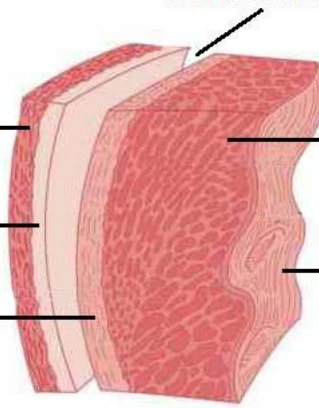
Fibrous layer

Parietal layer

(outer serous layer)

Visceral layer

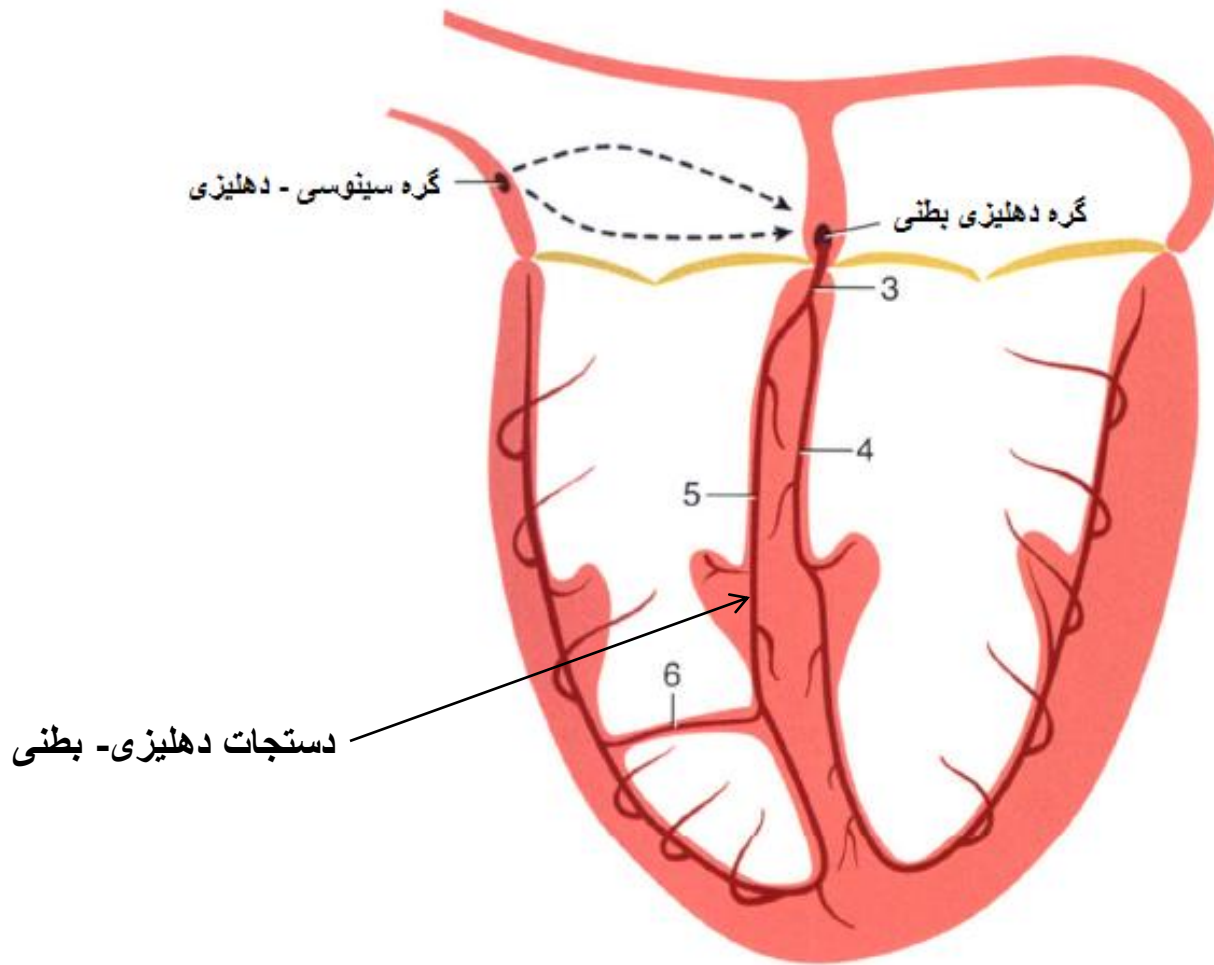
(inner serous layer)

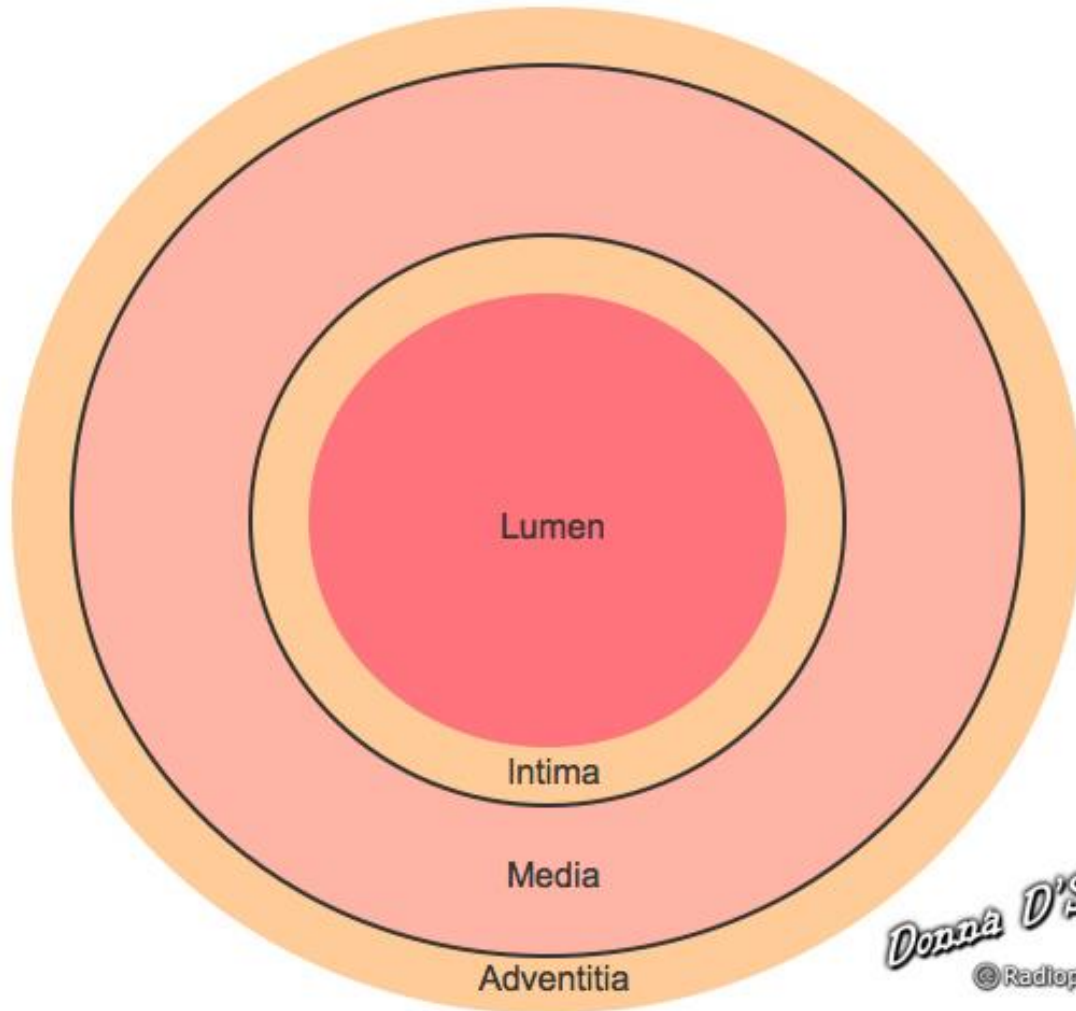


Myocardium

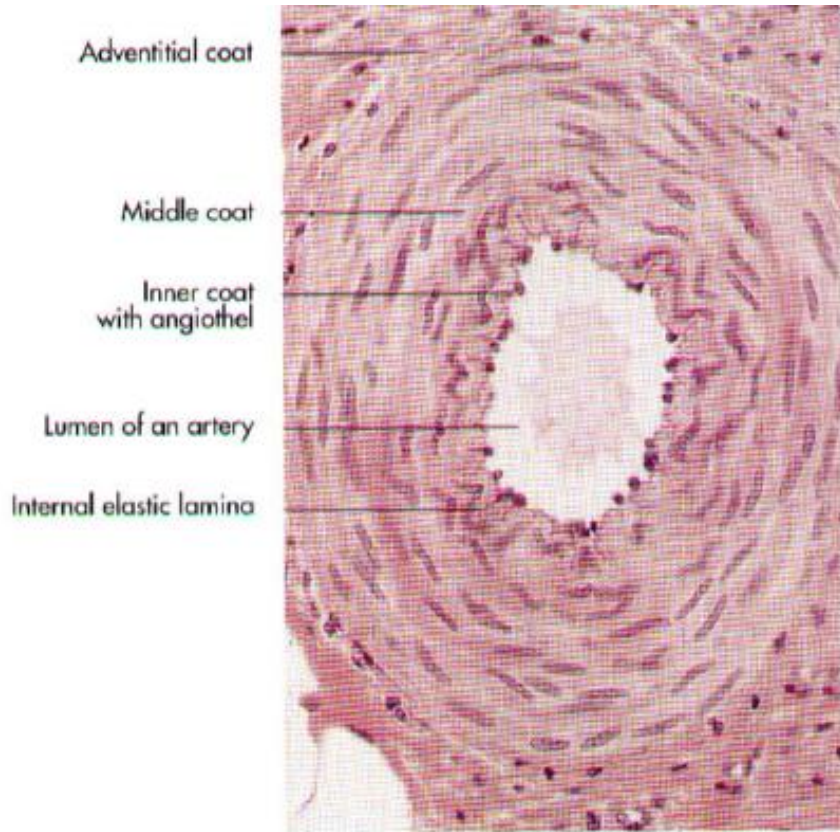
Endocardium



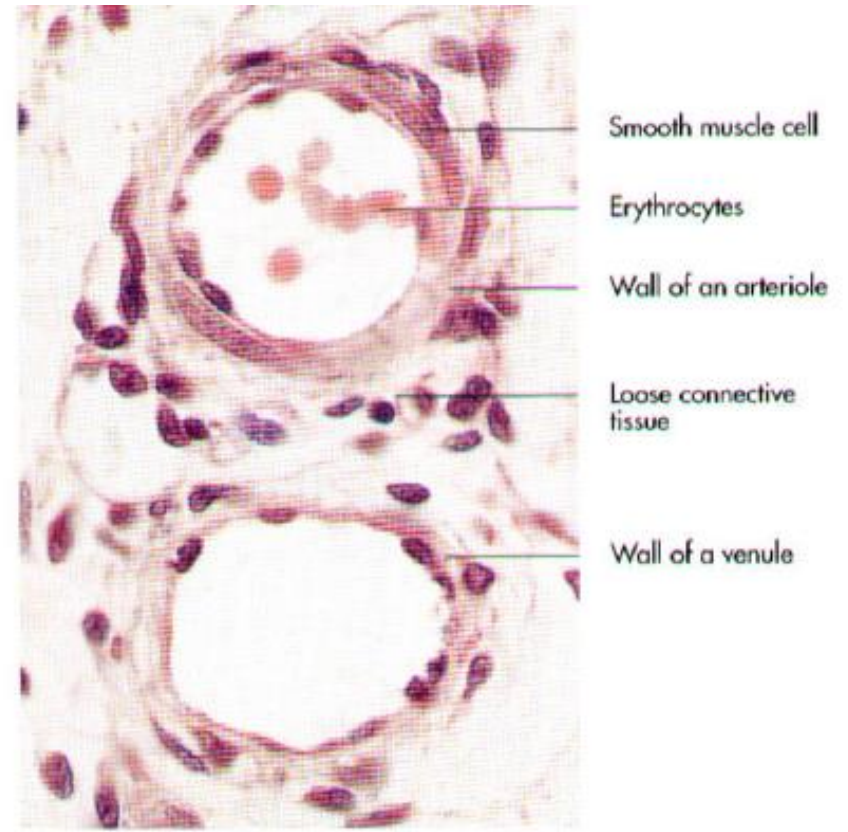




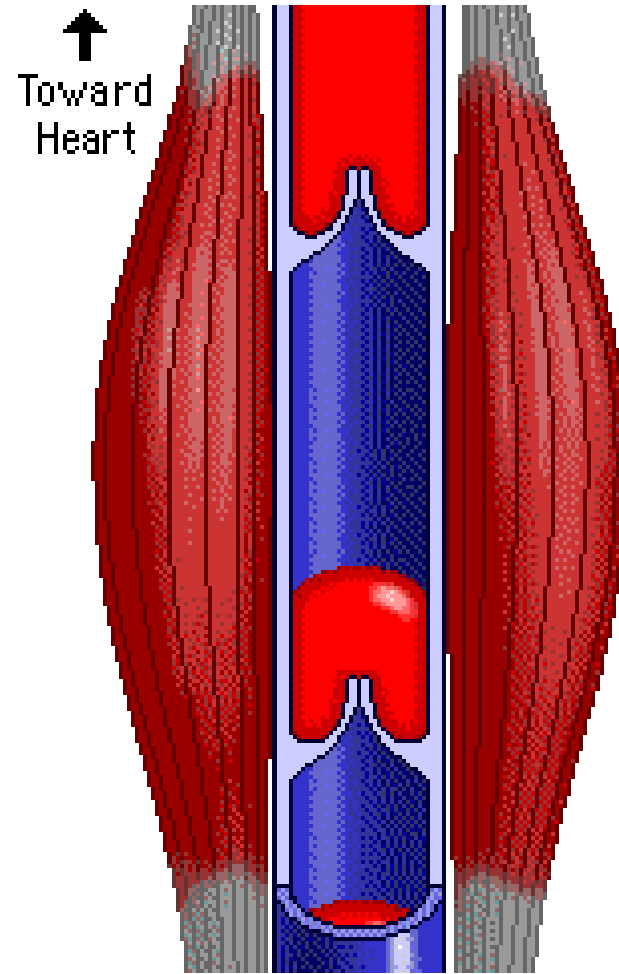
*Donna D'Souza*  
2009  
© Radiopaedia.org



**Fig. 12-14.** Histological section of an artery.



**Fig. 12-15.** Histological section of an arteriole and a venule.





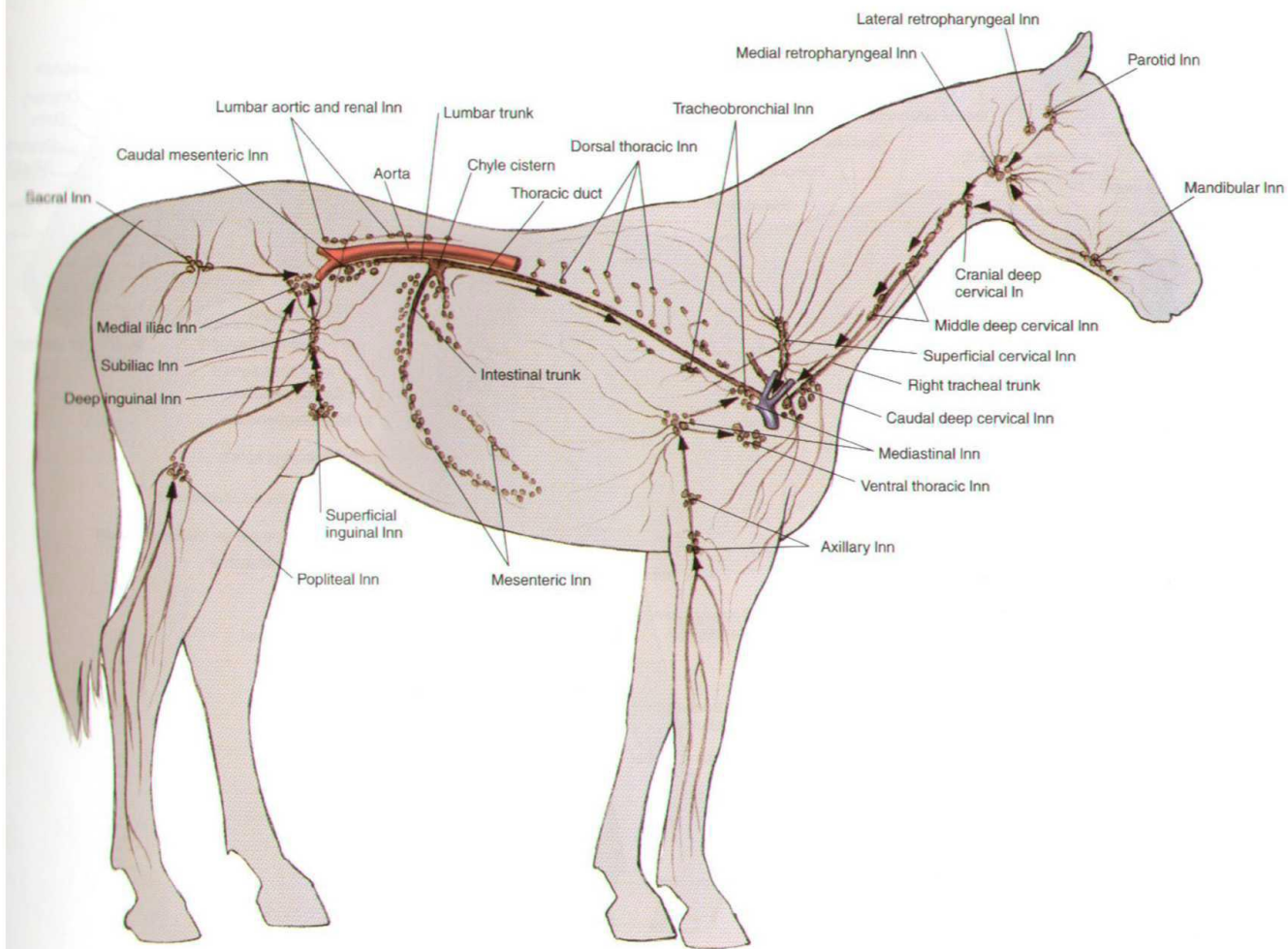


PLATE 1.26 Lymph nodes and vessels of the horse. Right lateral view. *Arrows* indicate the flow of lymph. Lymph node groups in the horse consist of up to dozens of lymph nodes ranging in size from a few millimeters to 2 centimeters in diameter. In = lymph node

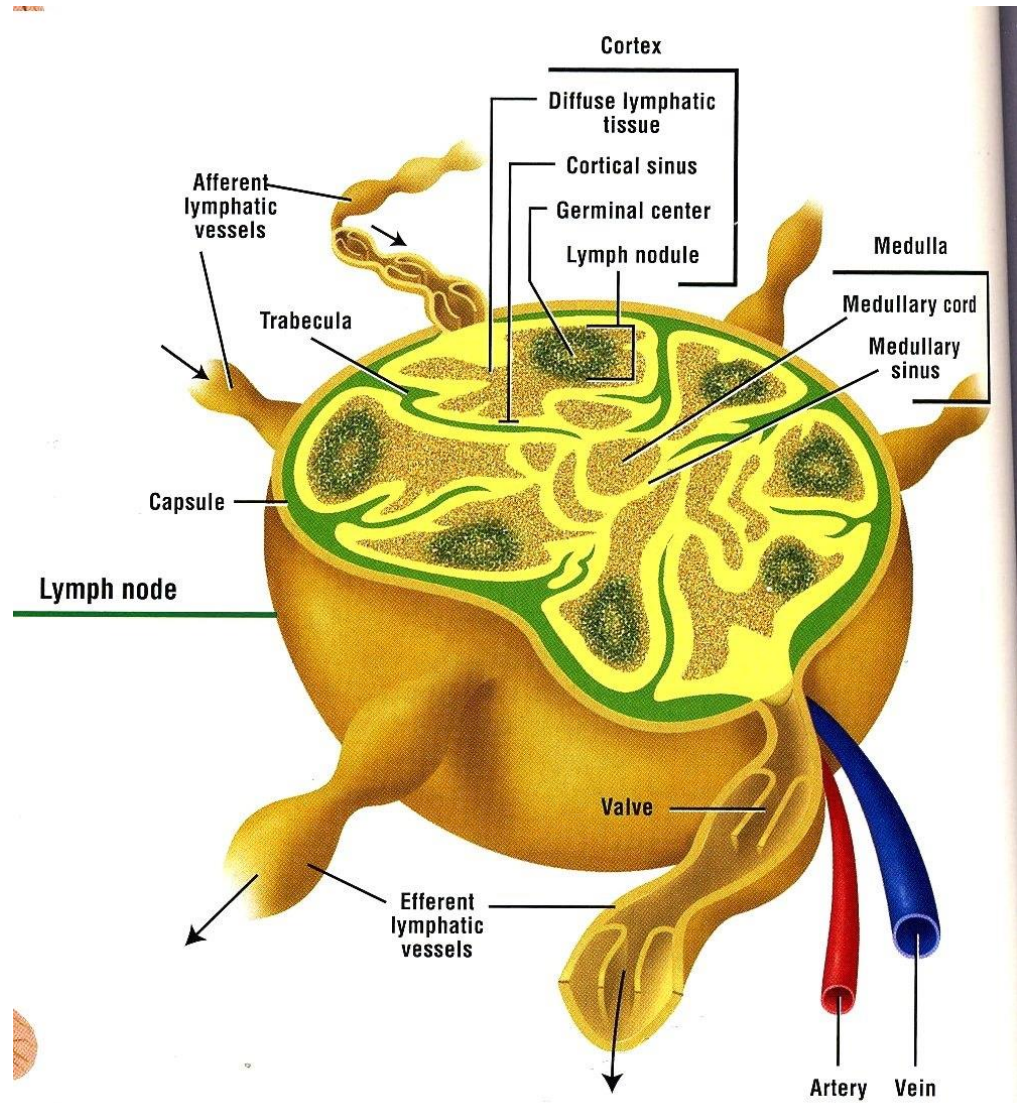
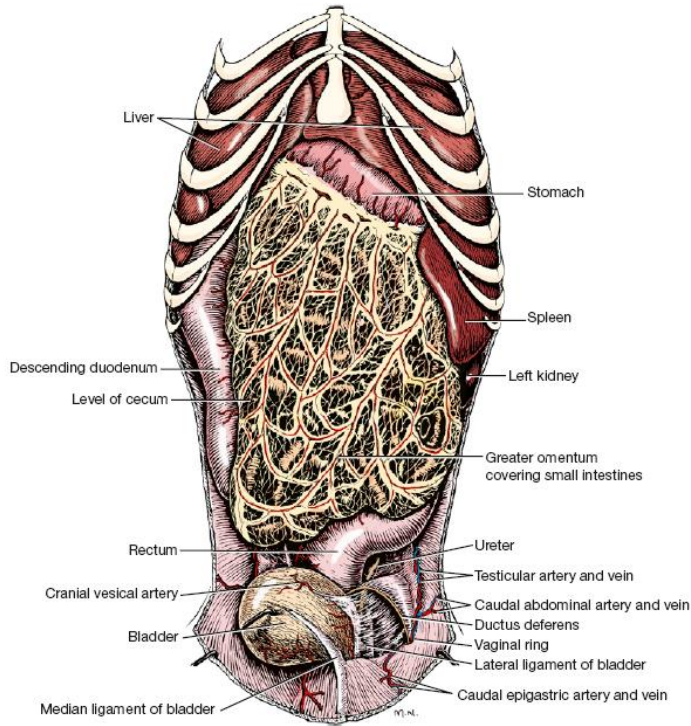
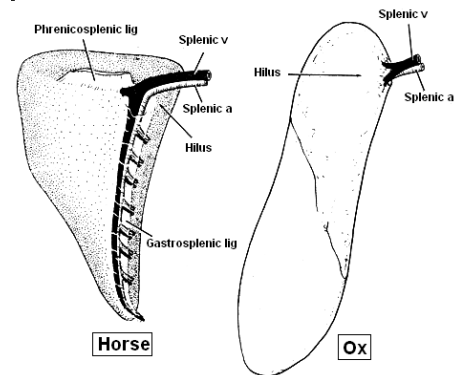
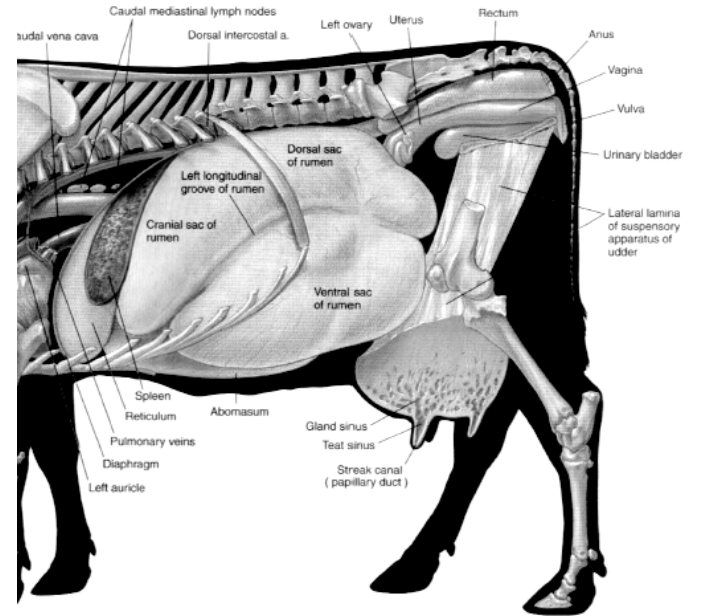


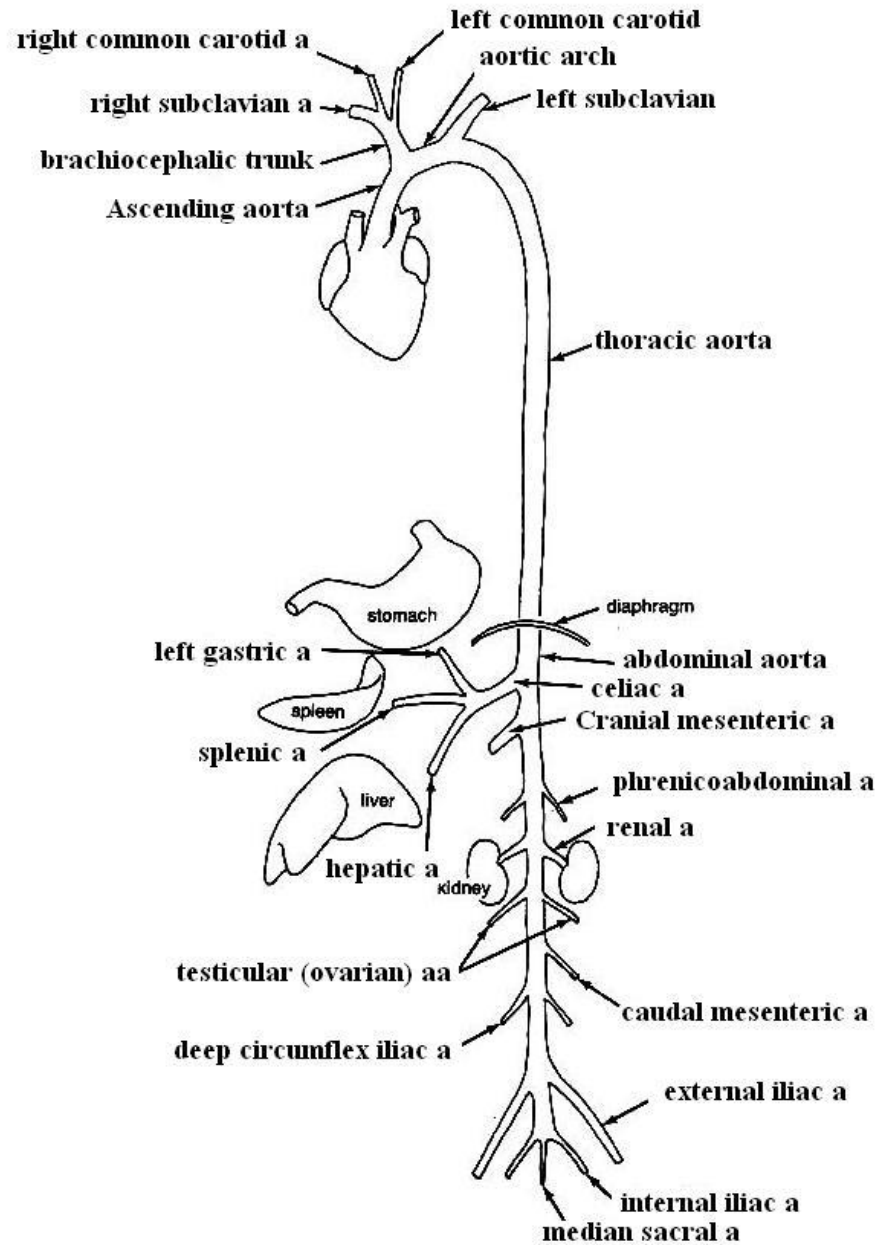
Diagram illustrating the distribution of the lymphoid organs and lymphatic channels in the body. (Retrieved from ...)

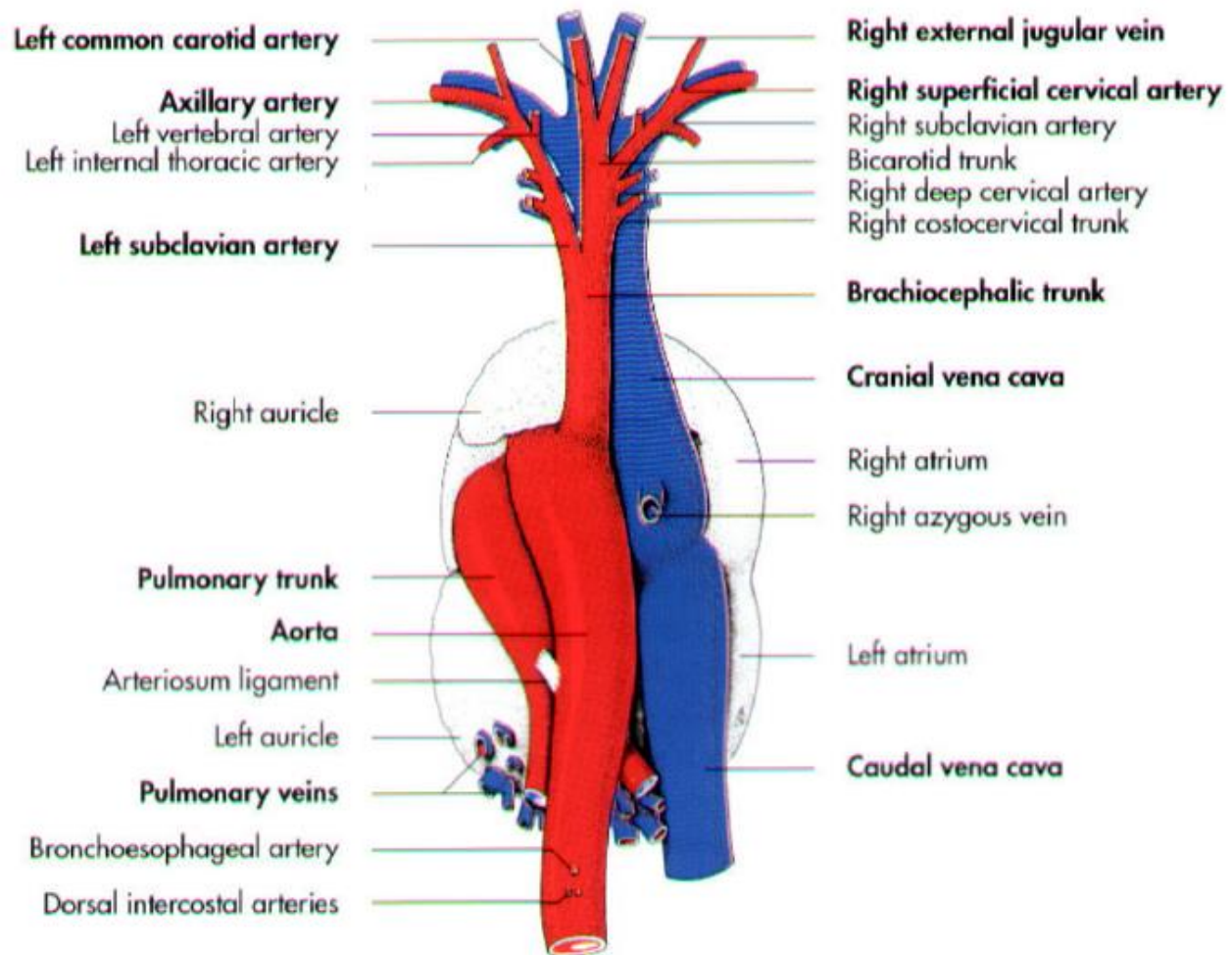
# طحال

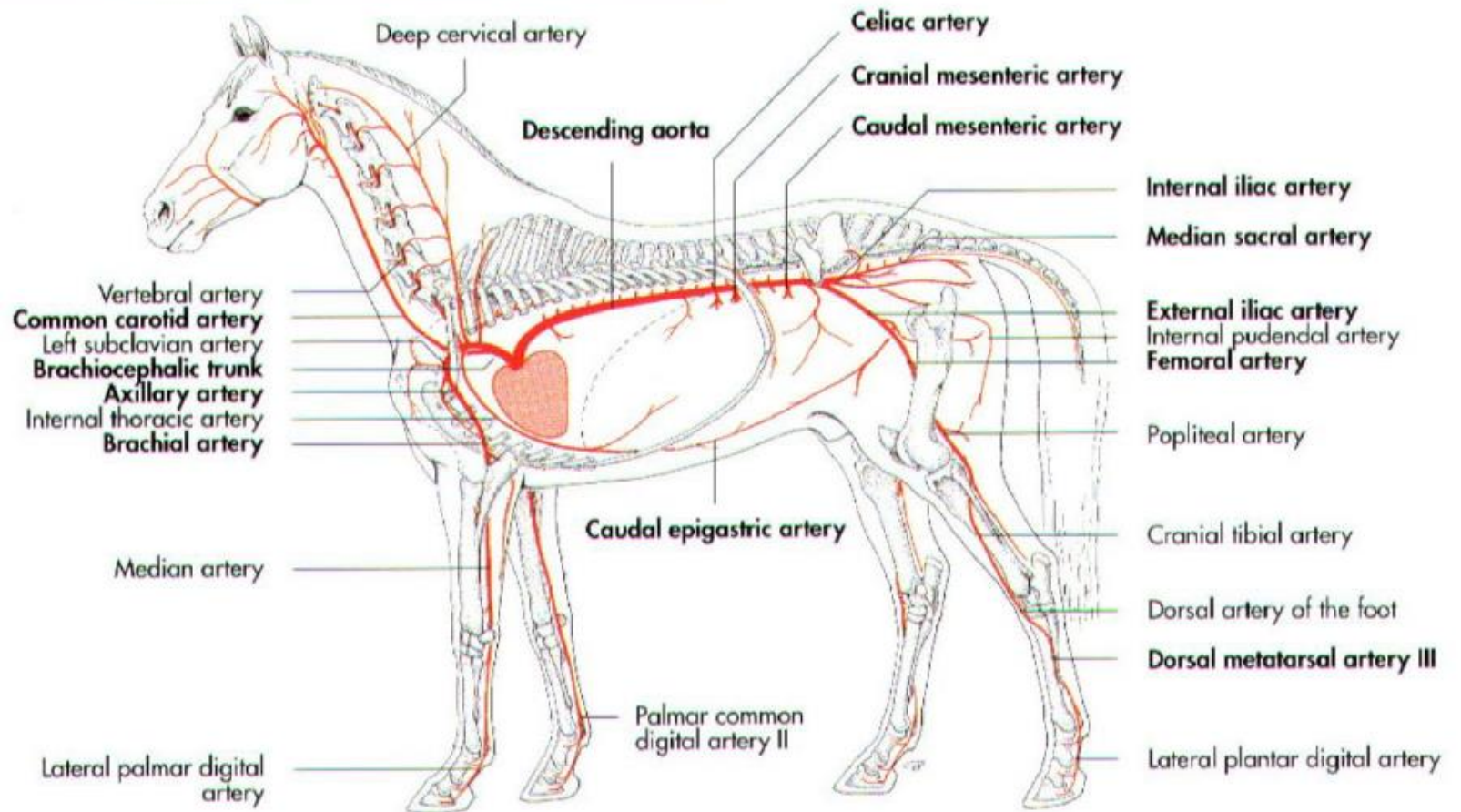


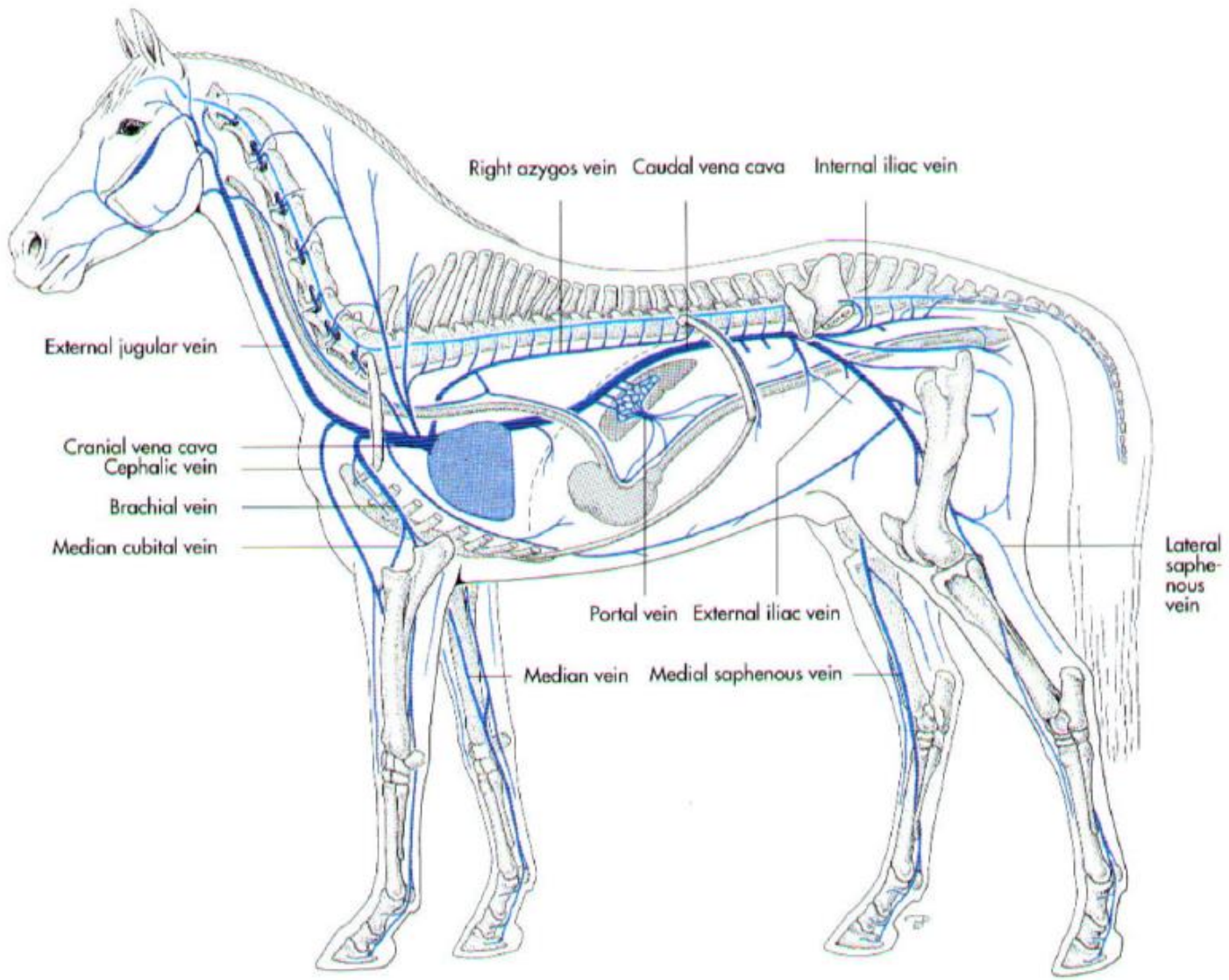
# Spleen











# سیاہرگ باب

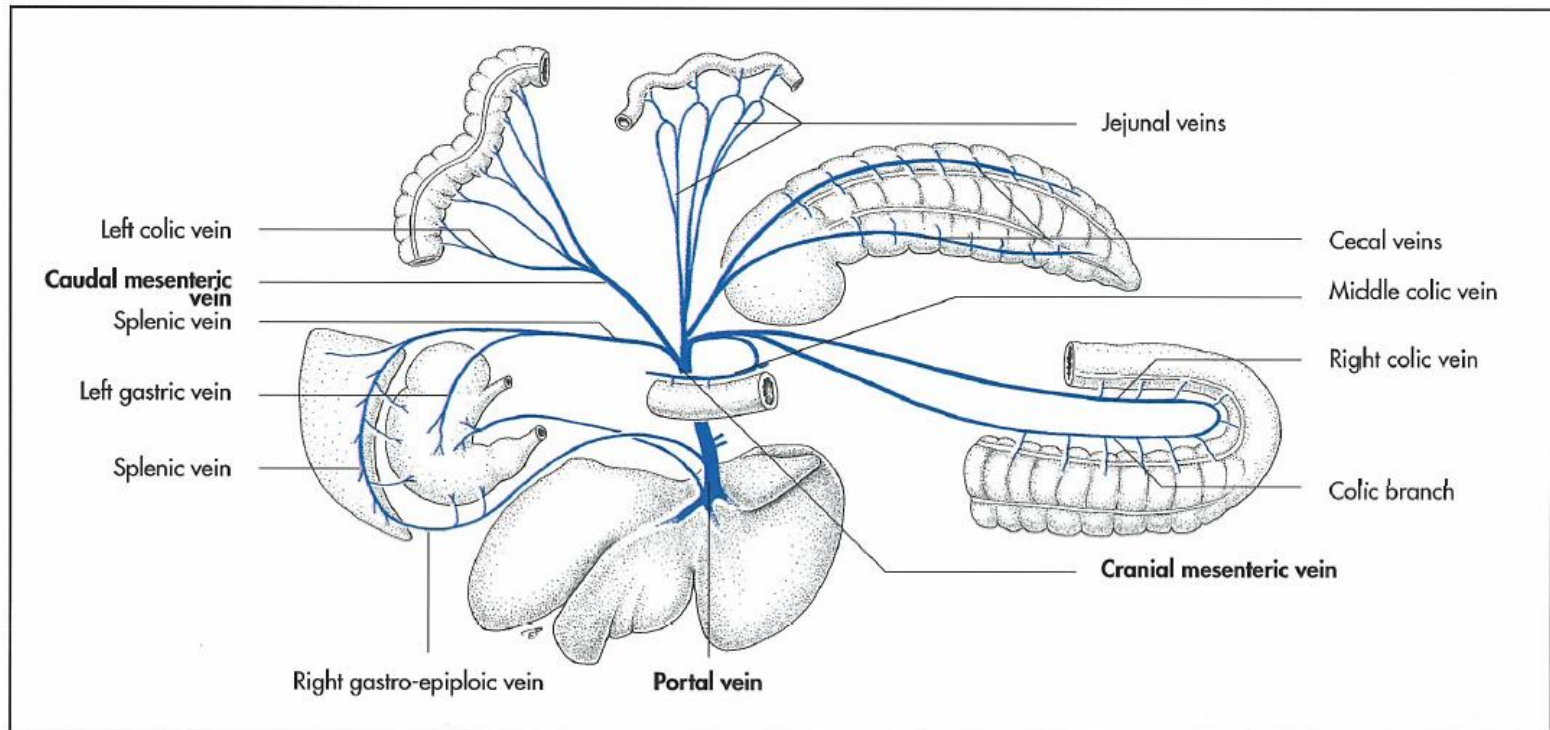


Fig. 12-46. Hepatic portal system of the horse (Ghetie, 1955).