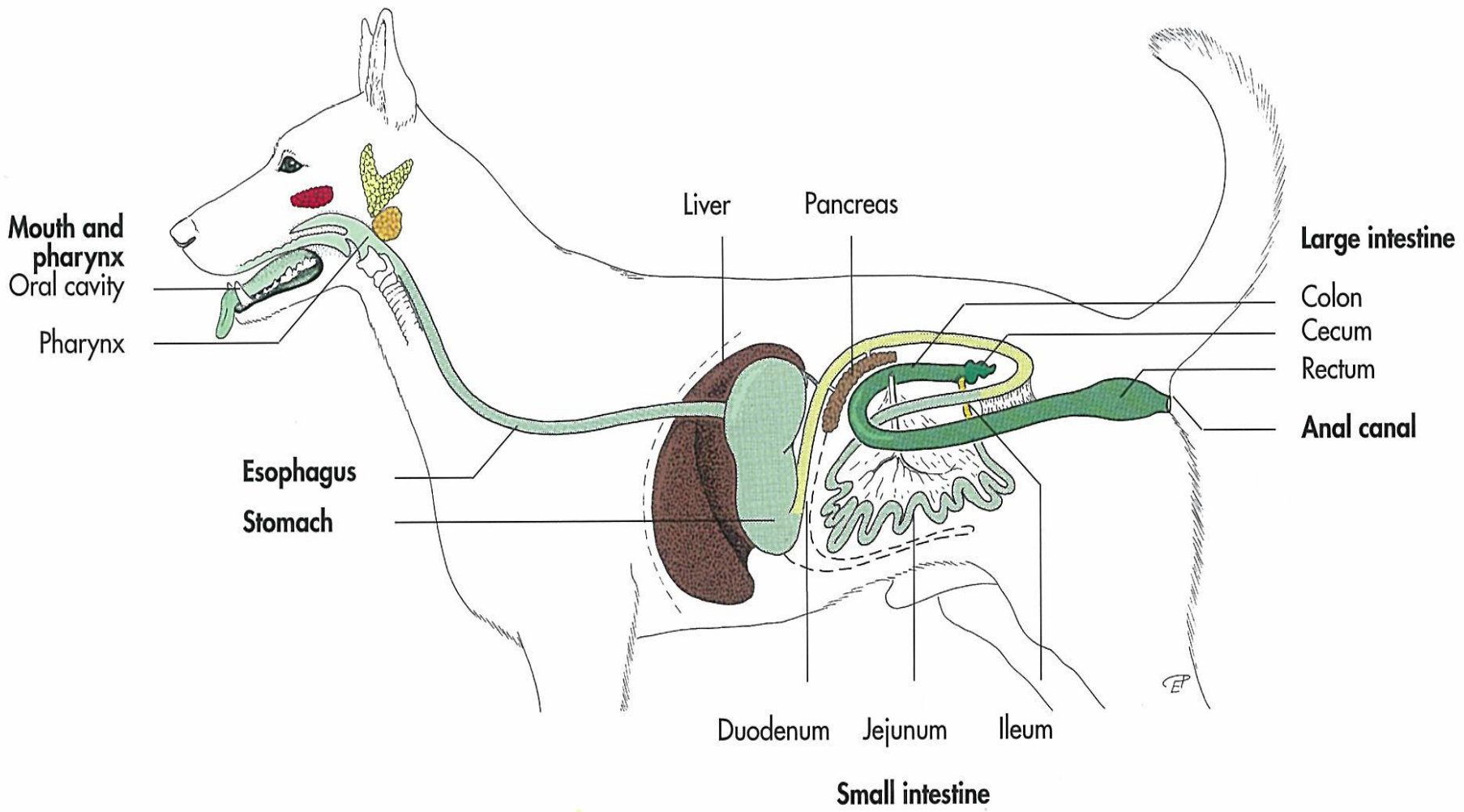


Digestive system

دستگاه گوارش

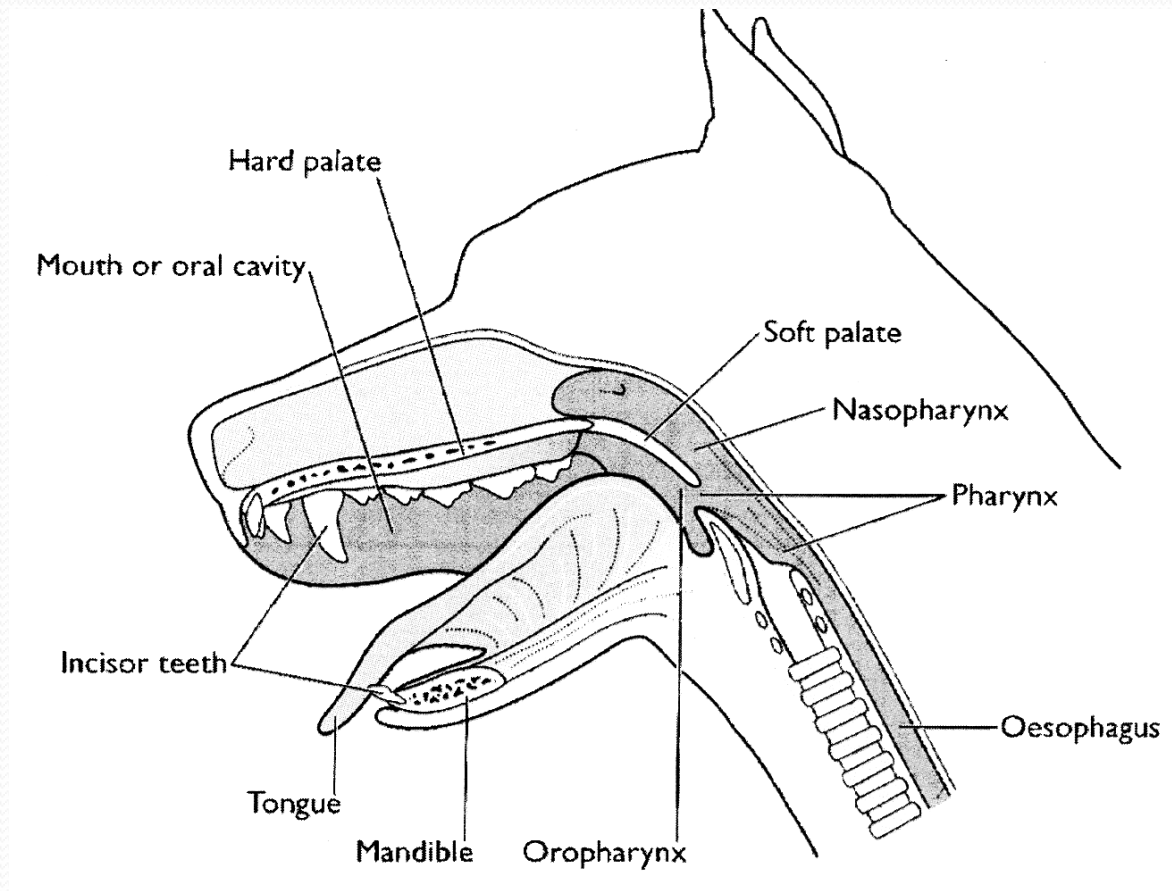
Reception – Digestion – Absorbtion -Expulsion.

- *Organs:*
- *1.Mouth and pharynx*
- *2.Alimentary canal : esophagus – stomach-intestines*
- *3.Accessory (associated) organs : (pancreas – liver)*



Oral cavity

حفرة دهانی

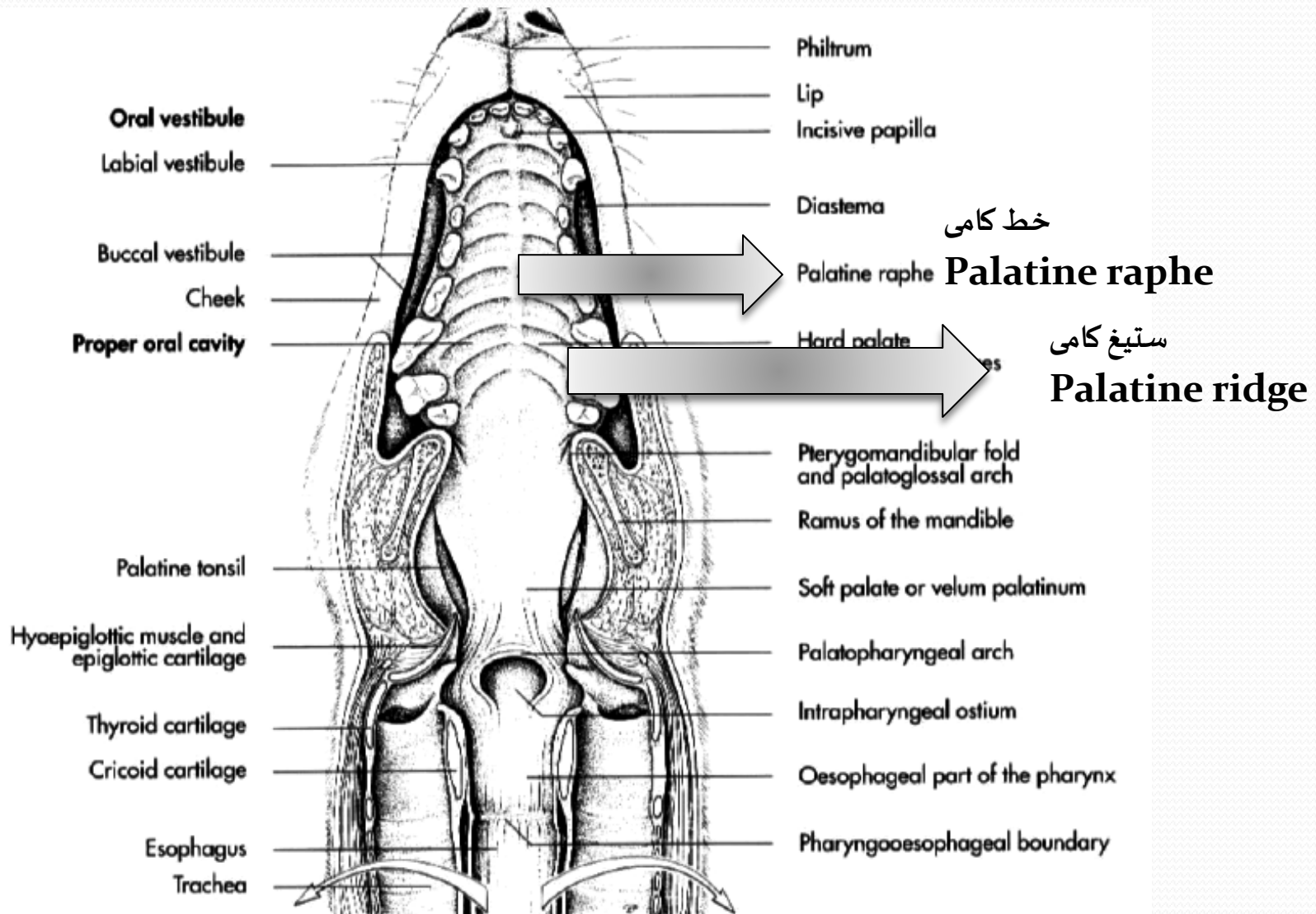




Oral cavity in horse



Oral cavity in dog



Oral vestibule

Labial vestibule

Buccal vestibule

Cheek

Proper oral cavity

Palatine tonsil

Hyoepiglottic muscle and epiglottic cartilage

Thyroid cartilage

Cricoid cartilage

Esophagus

Trachea

Philtrum

Lip

Incisive papilla

Diastema

Palatine raphe

Hard palate

Pterygomandibular fold and palatoglossal arch

Ramus of the mandible

Soft palate or velum palatinum

Palatopharyngeal arch

Intraparyngeal ostium

Oesophageal part of the pharynx

Pharyngooesophageal boundary

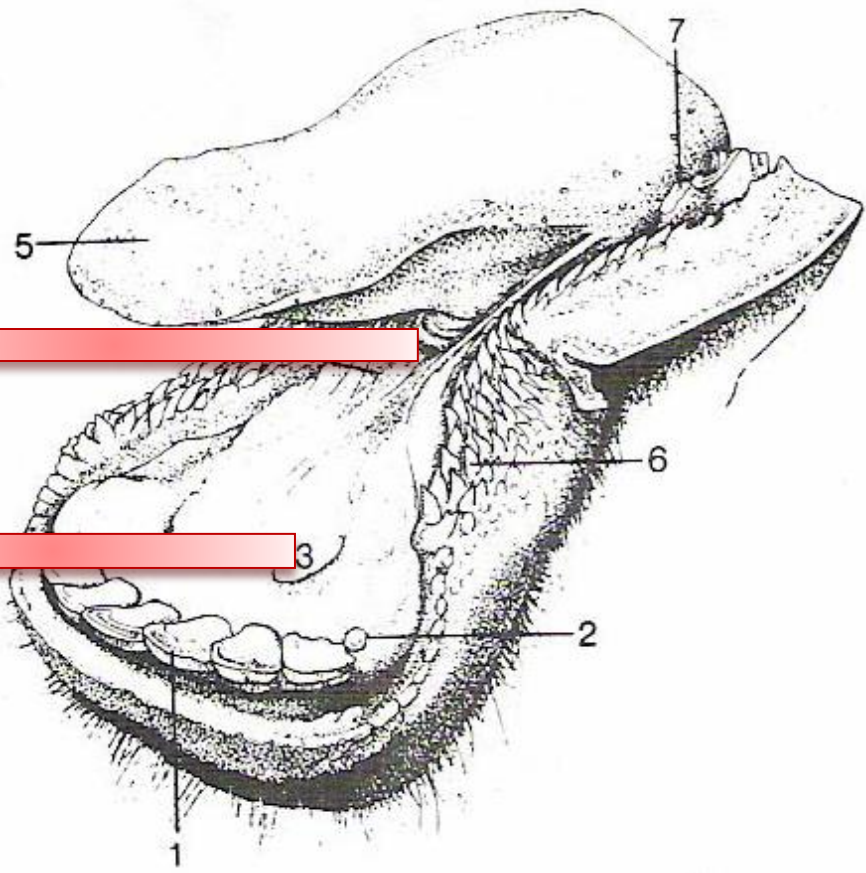
خط کامی

Palatine raphe

ستیغ کامی

Palatine ridge

سقف دهان درسگ



Frenulum linguae
ترمز زبان

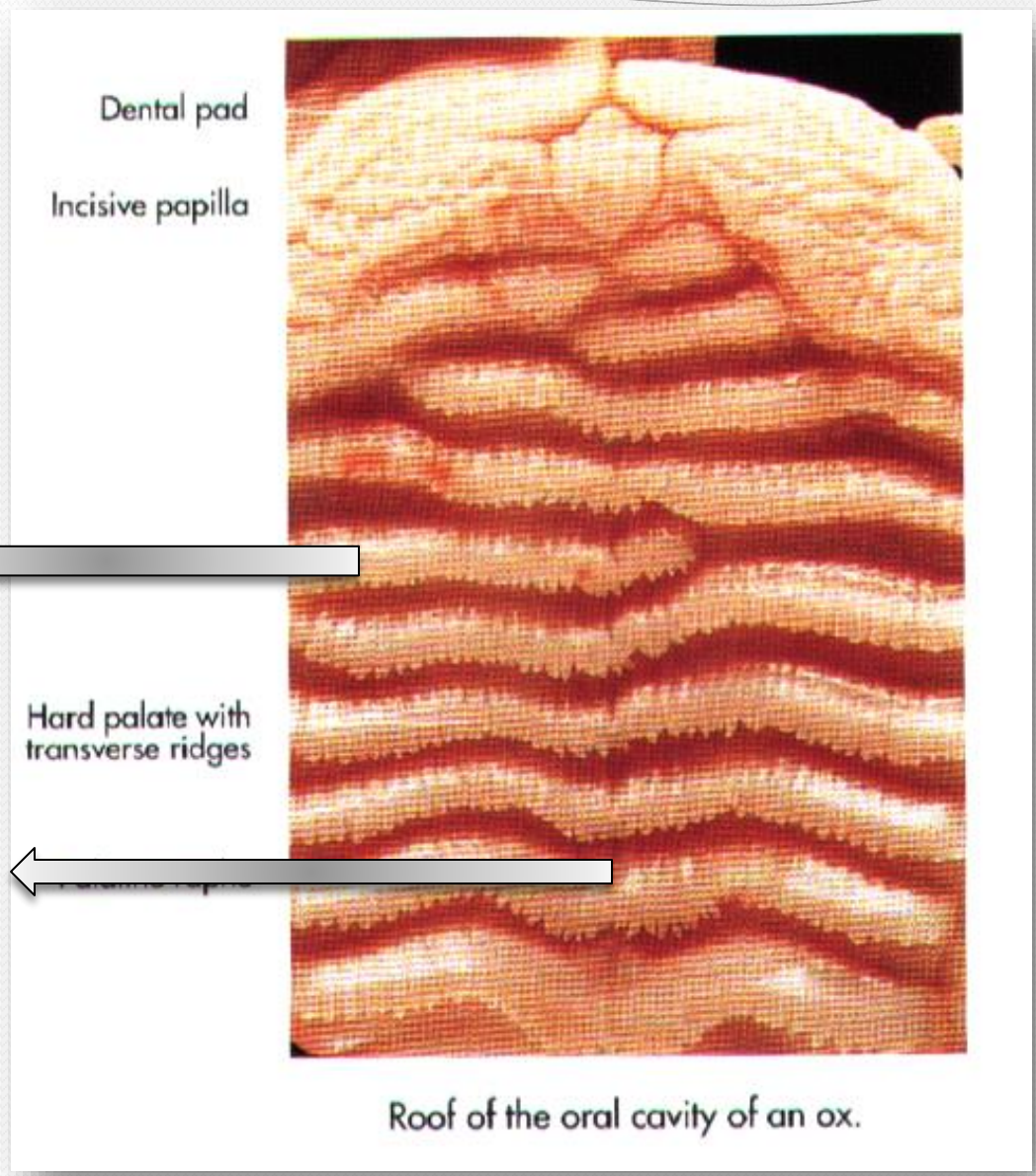


Sublingual papilla
پرزیربانی



Floor of the mouth and tongue.

1, Central incisor; 2, remnant of worn fourth deciduous incisor (i_4); 3, sublingual caruncle; 4, frenulum; 5, apex of tongue; 6, buccal papillae; 7, first cheek tooth (P_2).



ستېغ کامی

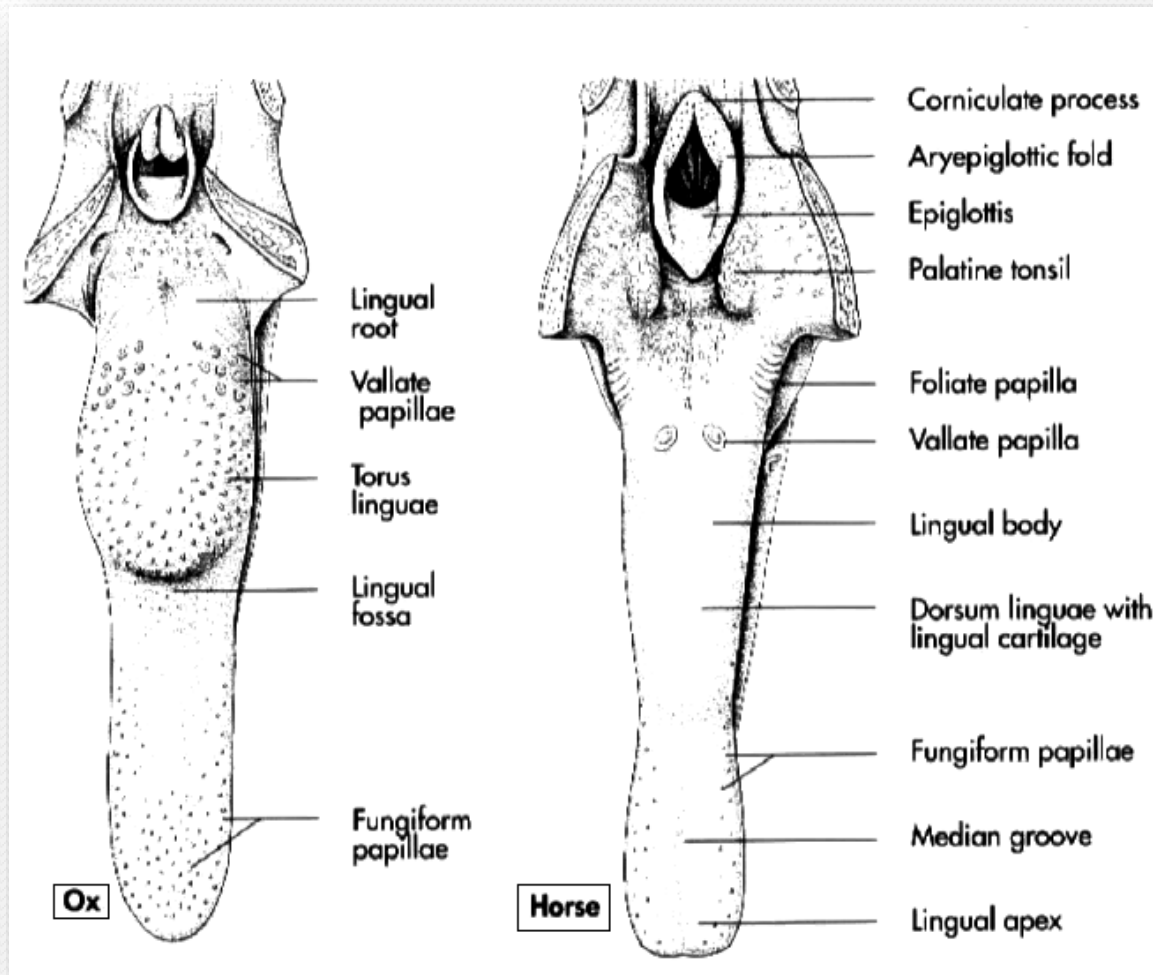
Palatine ridge

خط کامی

Palatine raphe

Tongue

زبان

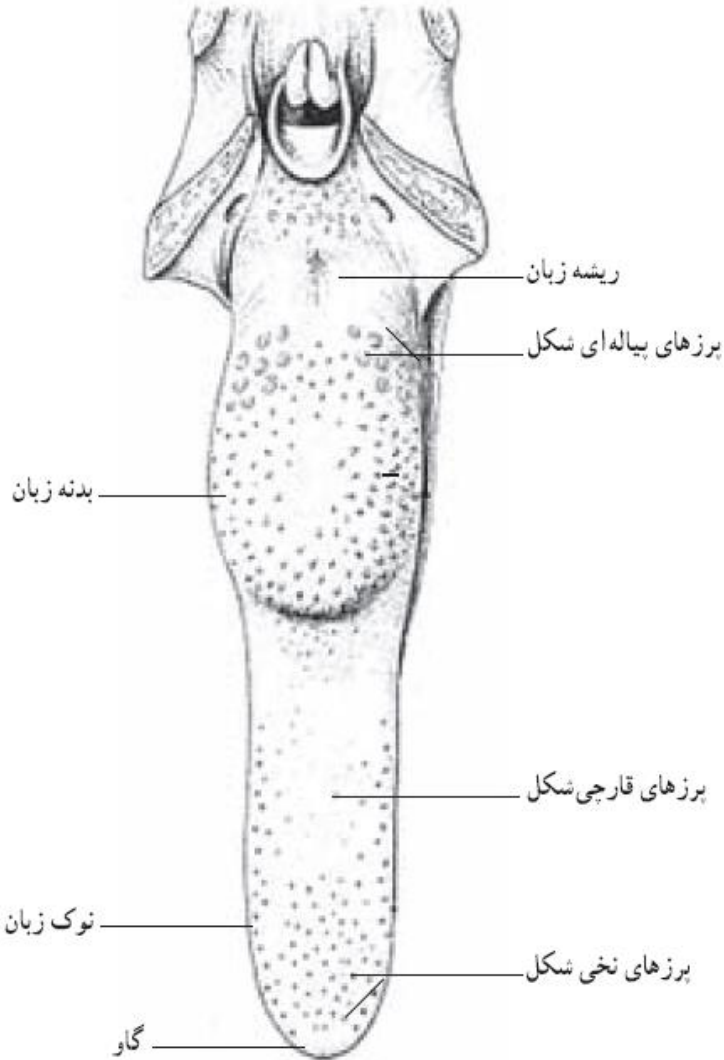


Lingual papilla

پرزهای زبانی

پرزها (Papillae):

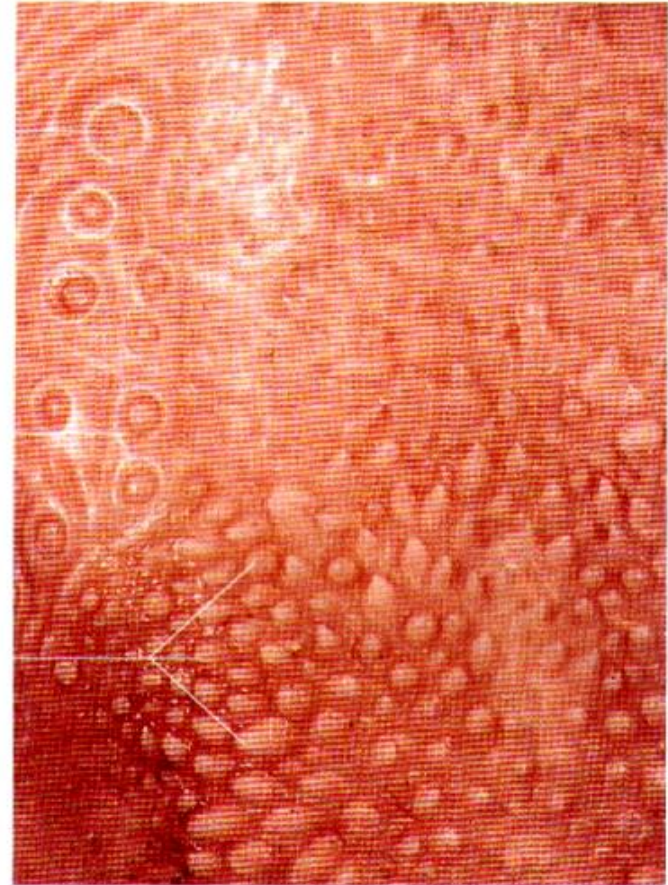
- نخ (Filiform) : شبیه نخ، جلوی گودی زبان، رو به عقب، عمل مکانیکی
 - قارچی (Fungiform) : بیشتر در امتداد لبه های راس زبان، عمل چشایی
 - مخروطی (Conical) : روی برجستگی پشتی زبان، عمل مکانیکی
 - عدسی (Lenticular) : روی برجستگی پشتی زبان، عمل مکانیکی
 - جامی (Vallate) : در هر طرف ۱۷ – ۸ عدد در انتهای Torus ، عمل چشایی
- برگی : فقط گوشتخواران و تک سمیان / عمل چشایی



Vallate papilla

Vallate papilla

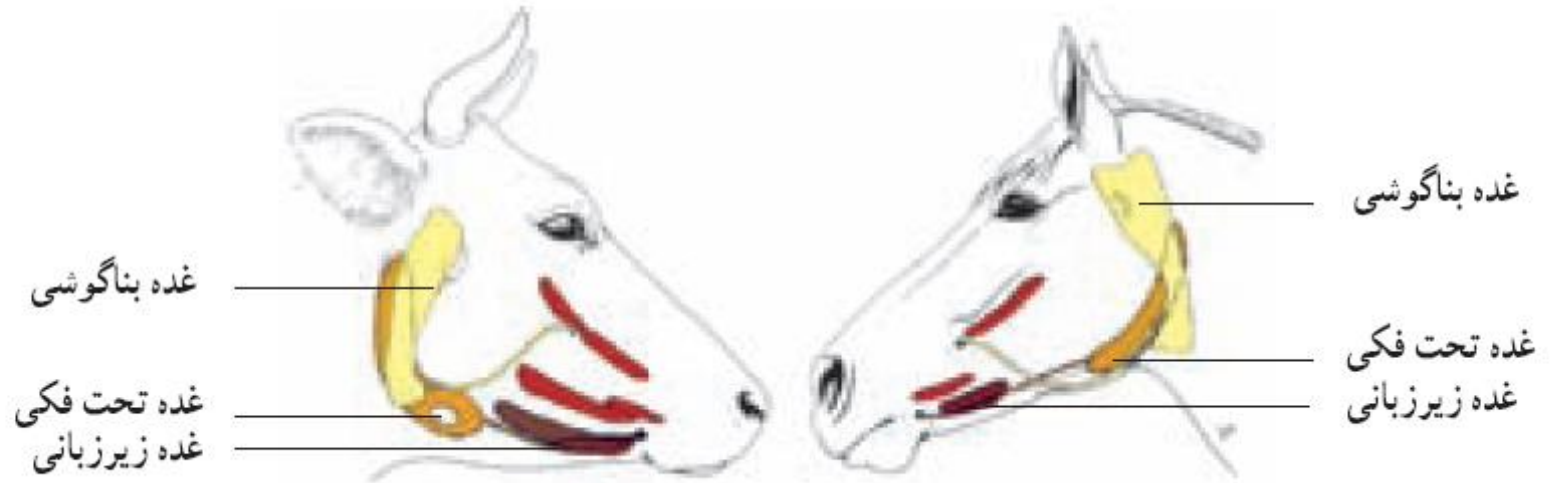
Conical papillae



Papillae at the base of the tongue in an ox.

Salivary glands

غدد بزاقی

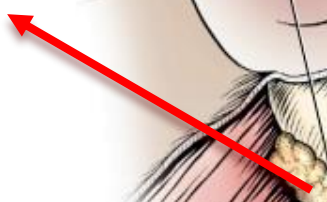
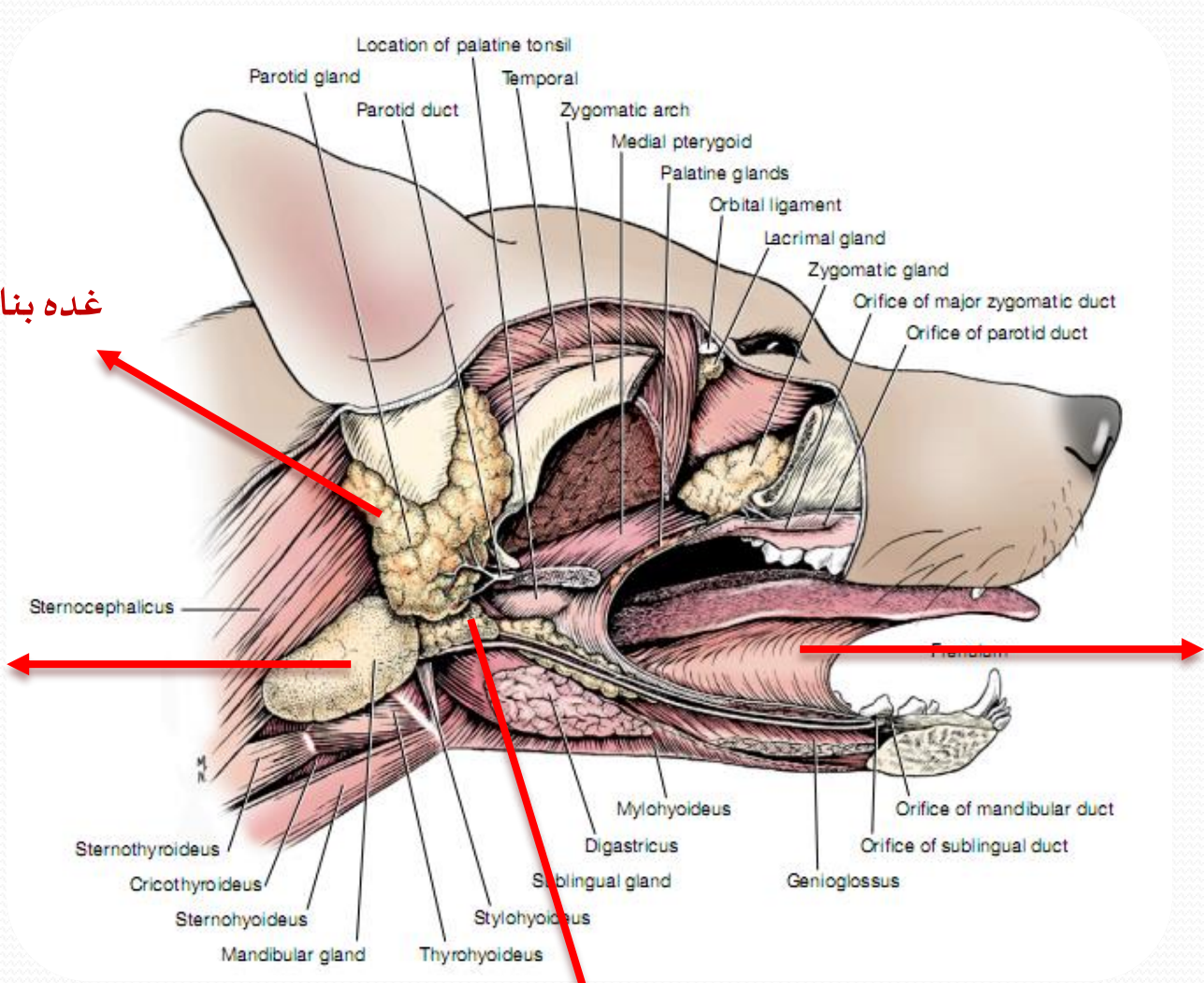


غده بناگوشی

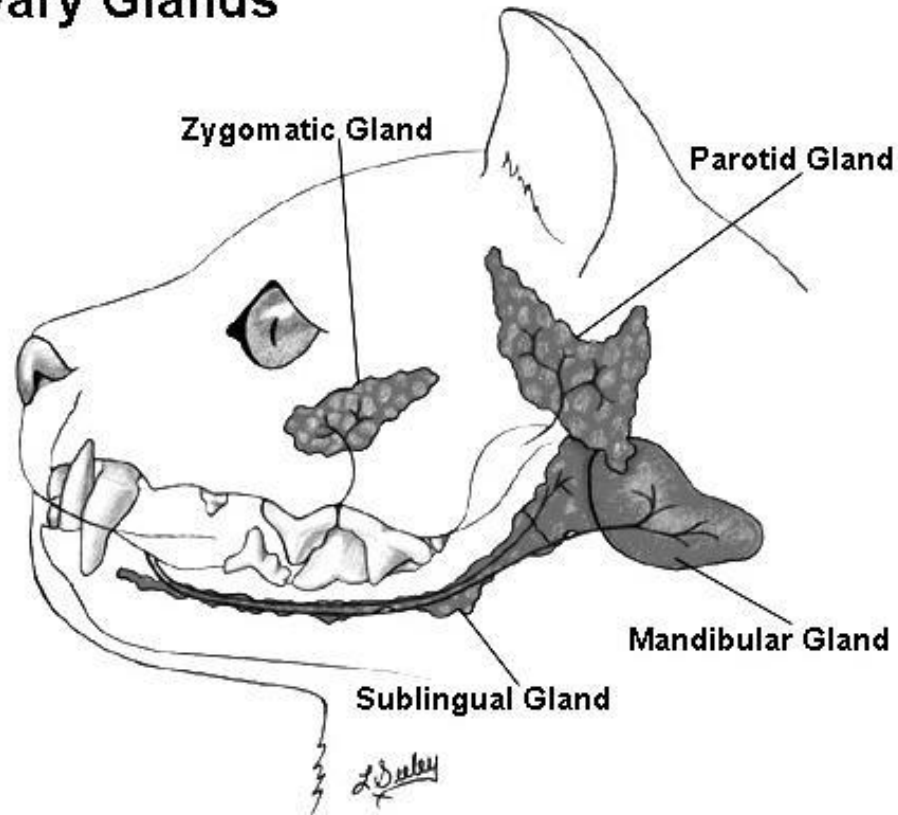
غده فک پائینی

غده زیرزبانی

ترمزبان

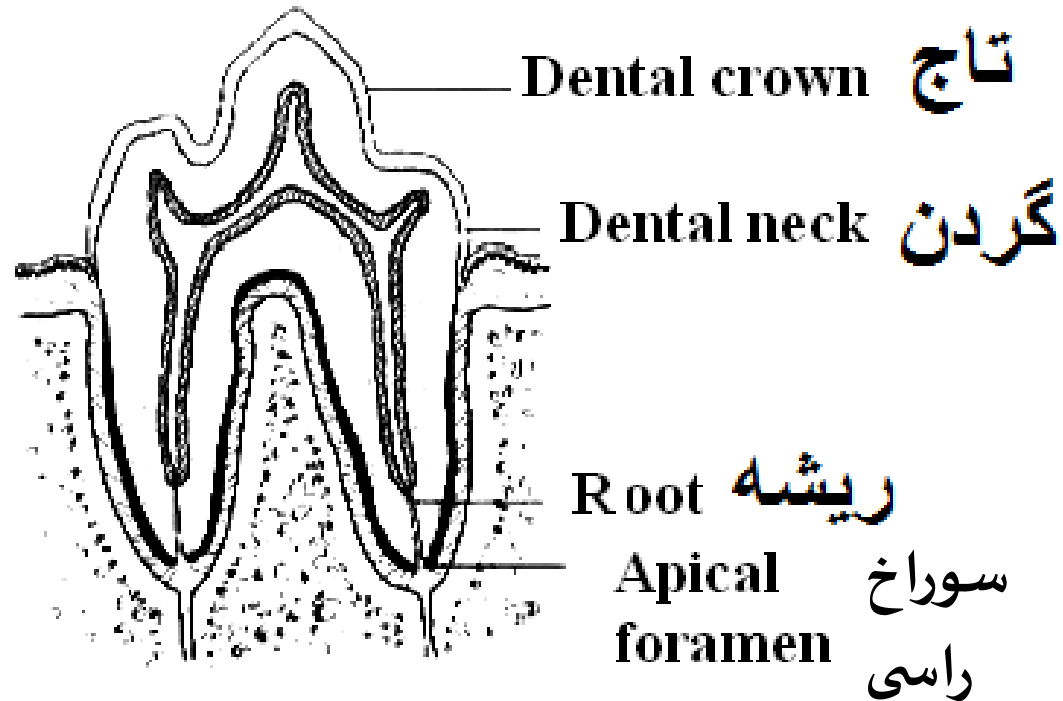


Salivary Glands







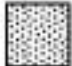
Teeth

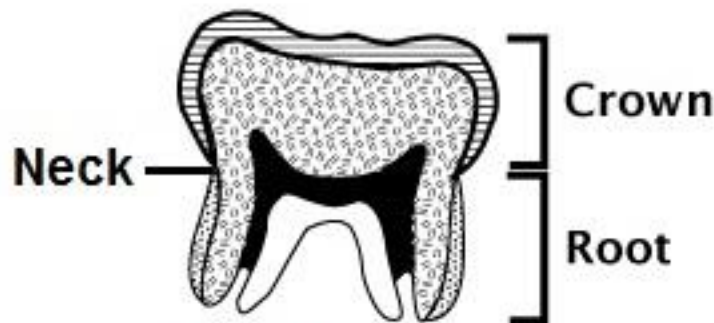
دندان ها



Canine M1

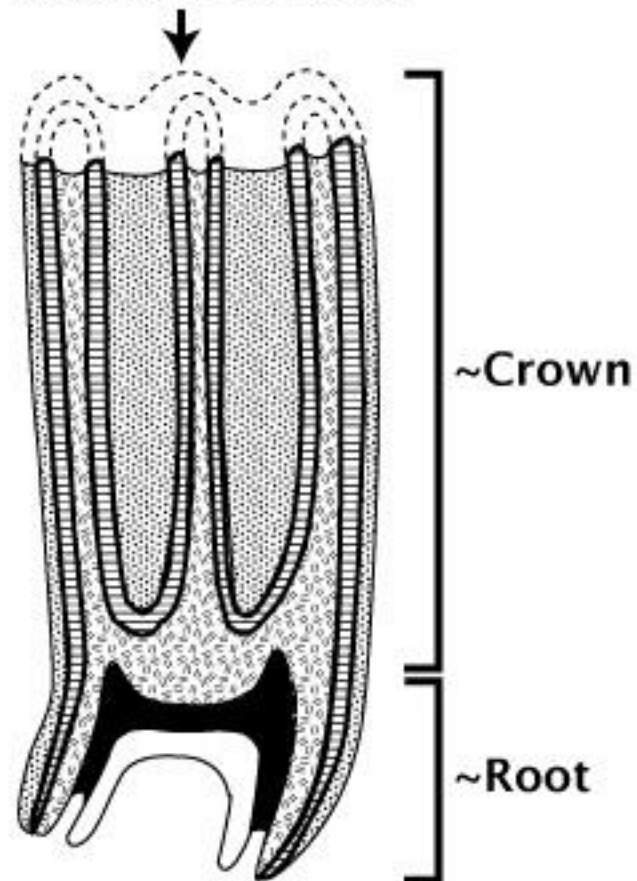
© Strömberg (2006)

-  Pulp cavity
-  Bone
-  Enamel
-  Dentine
-  Cementum

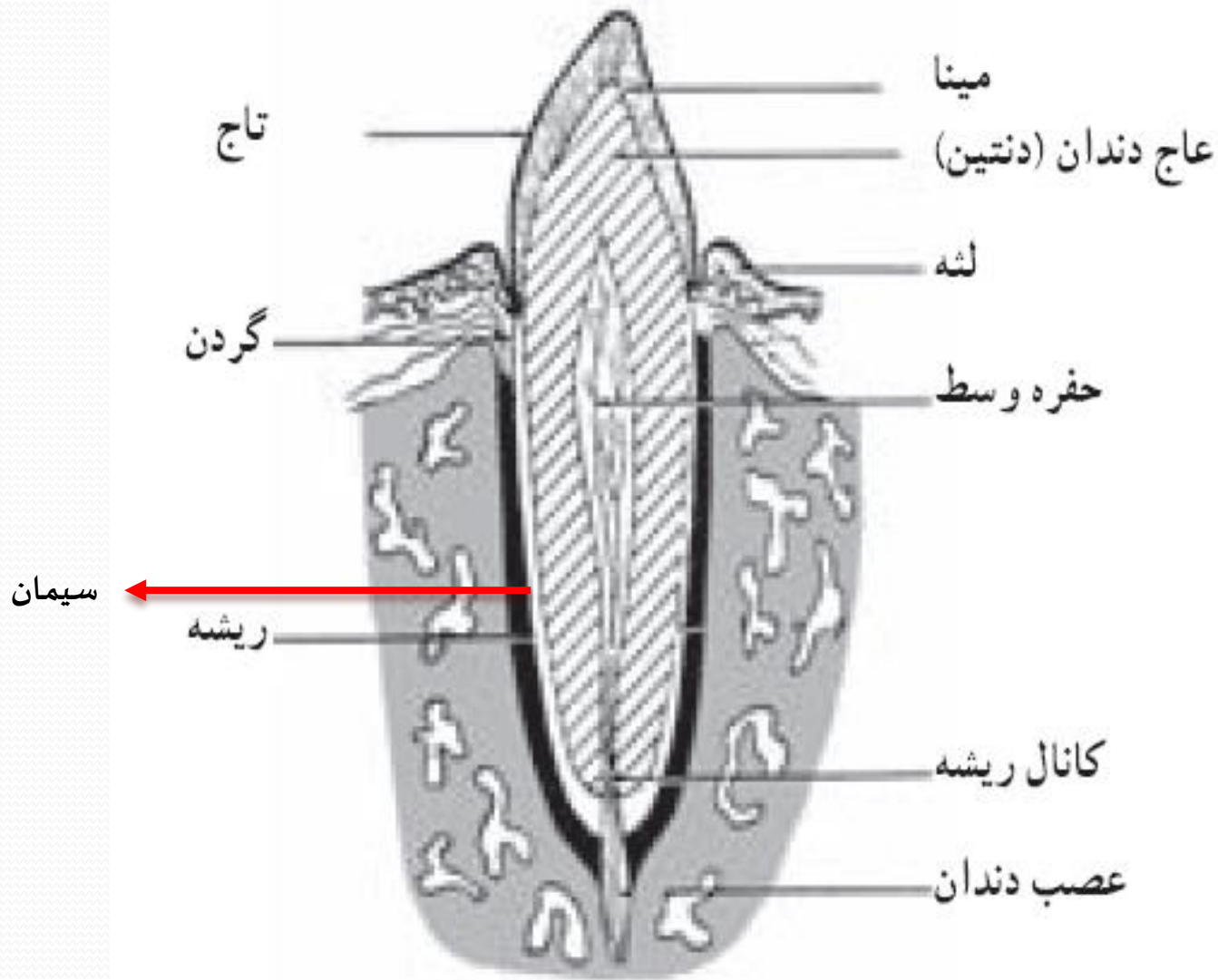


Brachydont

Occlusal surface



Hypsodont



Teeth surfaces

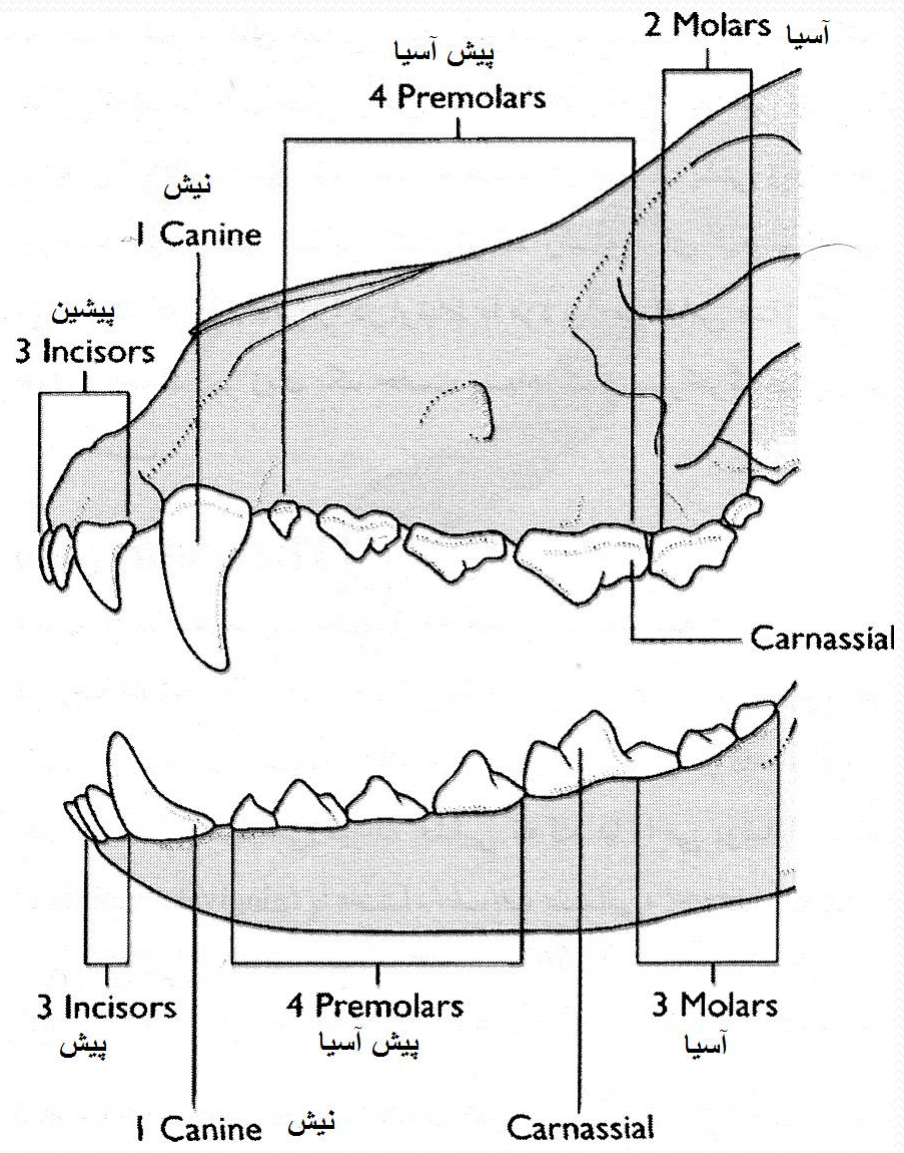
سطح تماسی

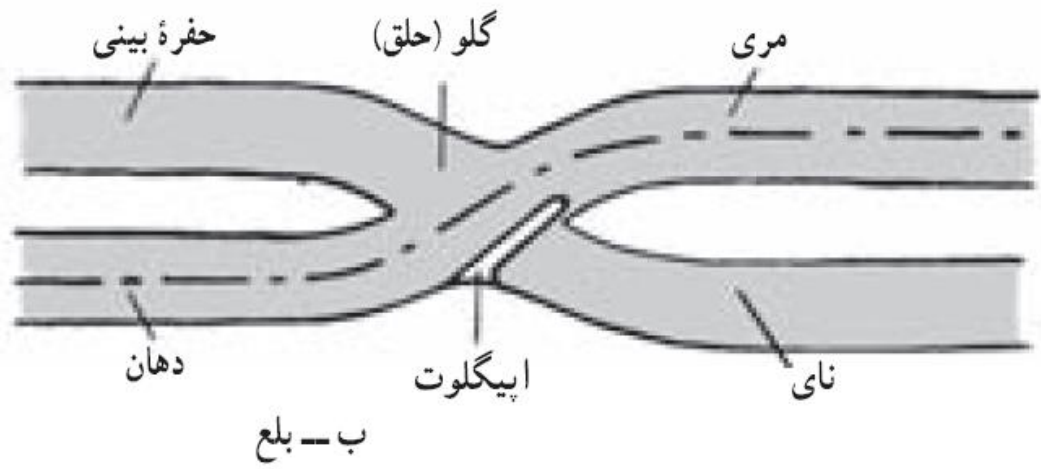
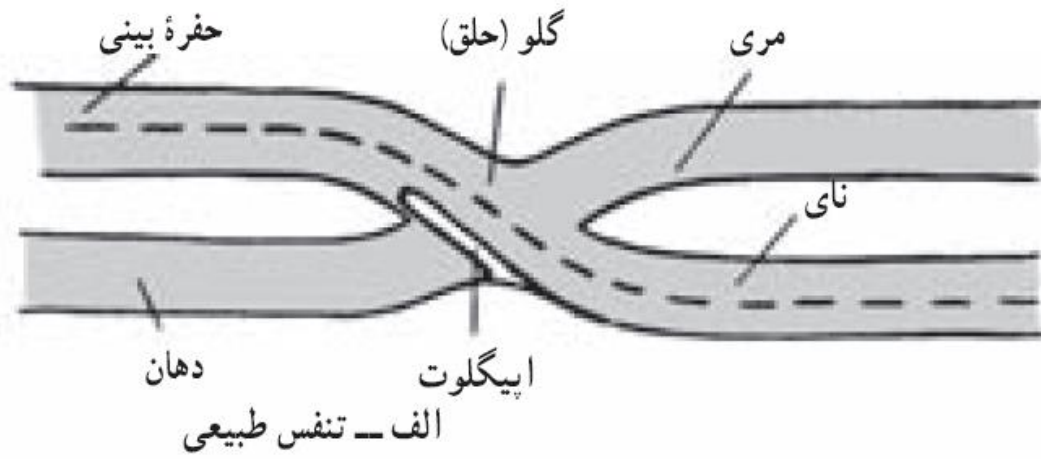


سطح سایشی

سطح زبانی

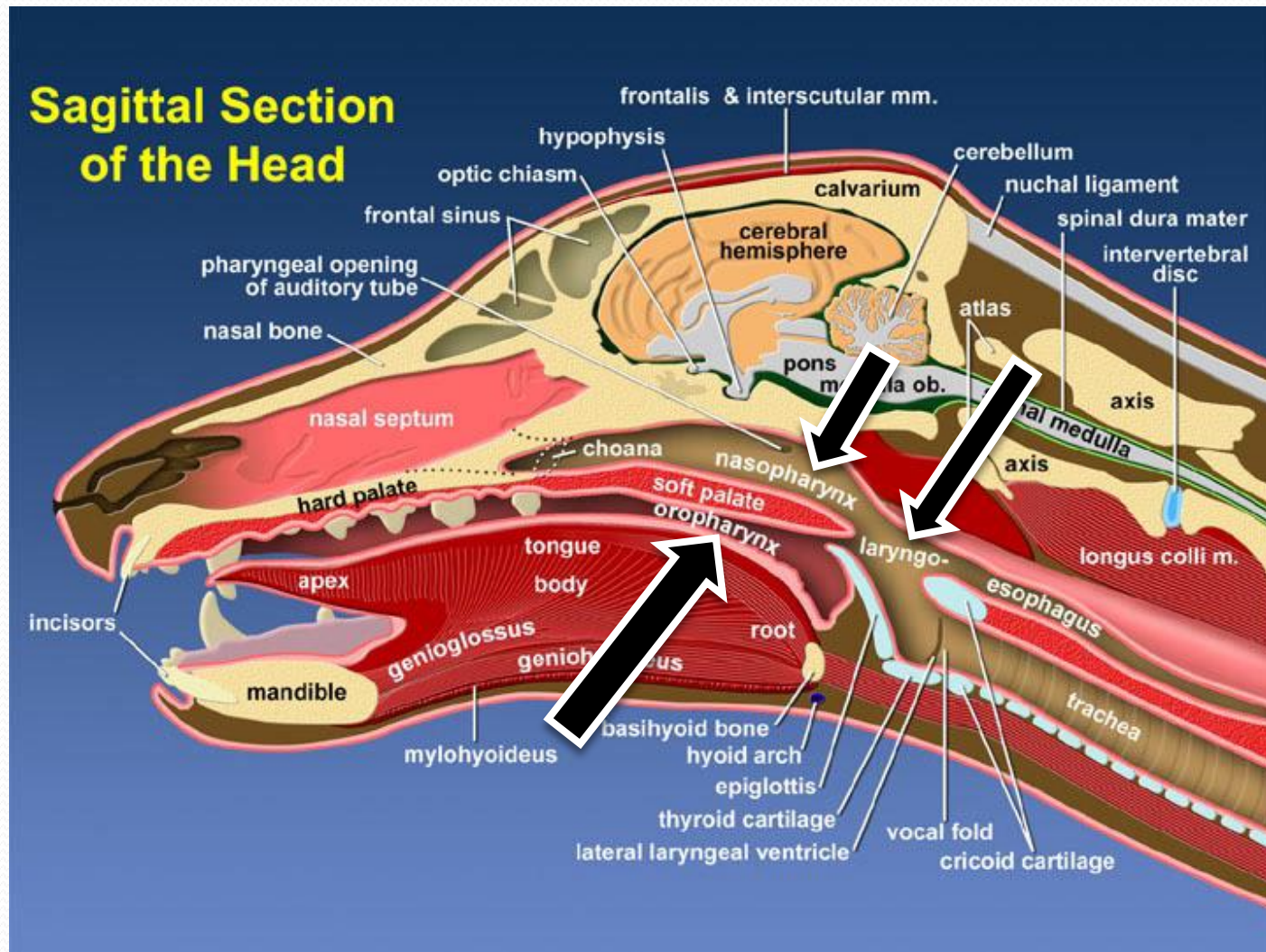
سطح دهلیزی

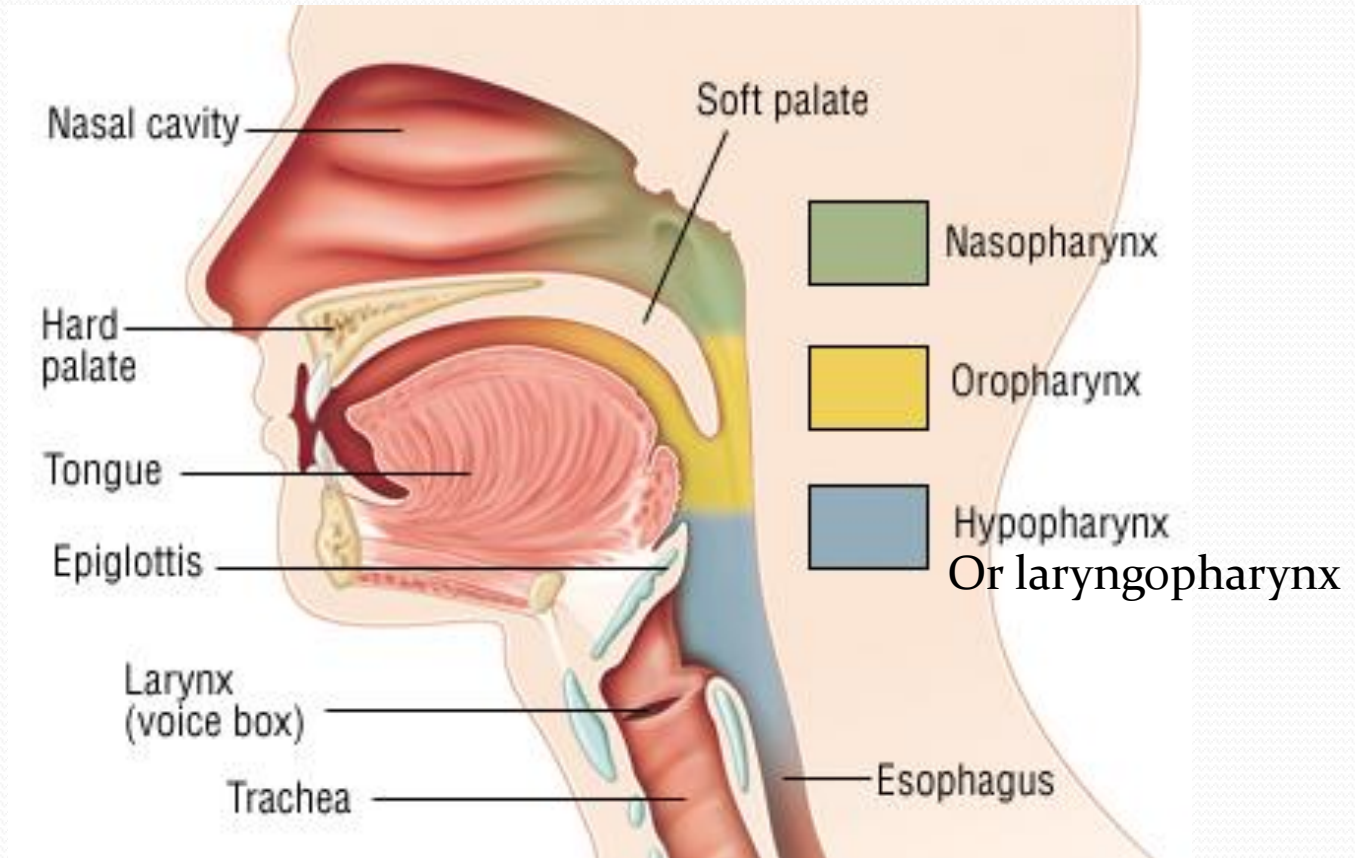




Pharynx

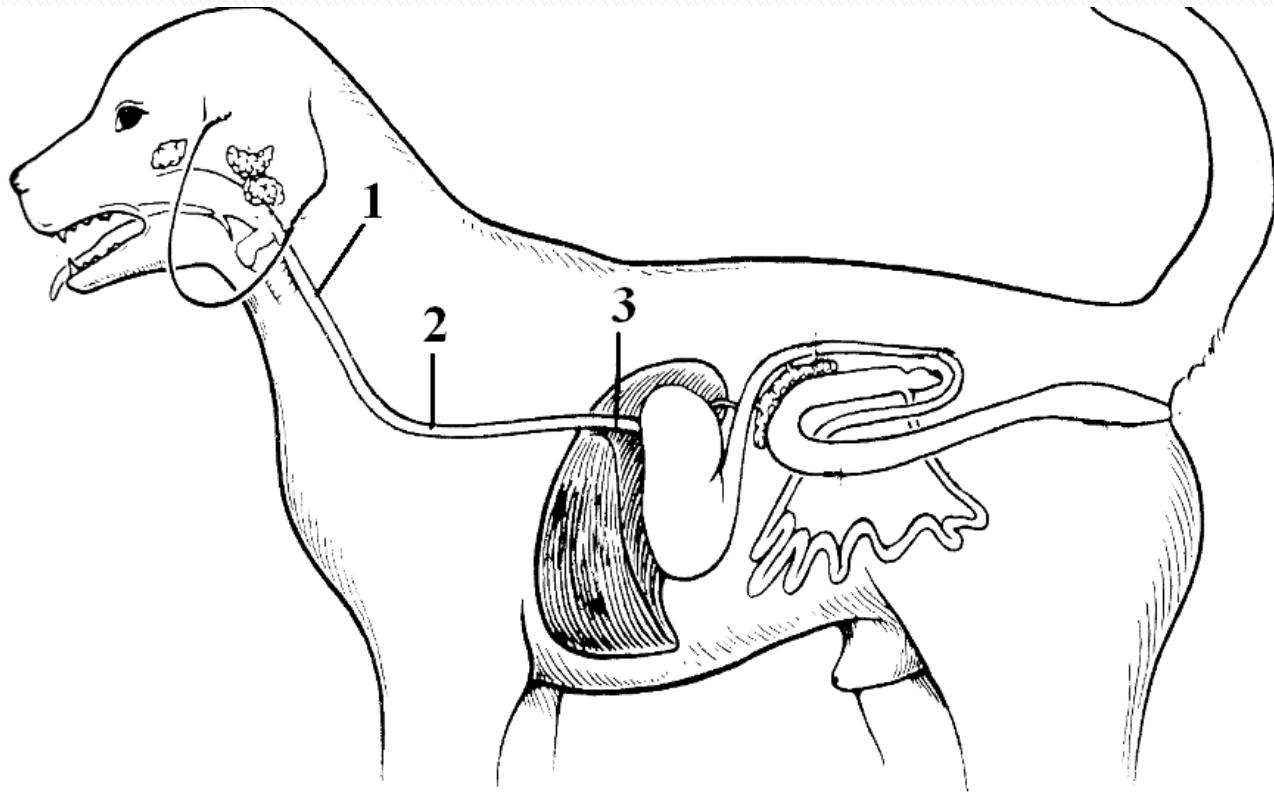
حلق





Esophagus

میری



1)Cervical part 2)Thoracic part 3)Abdominal part

Peritoneum

صفاق

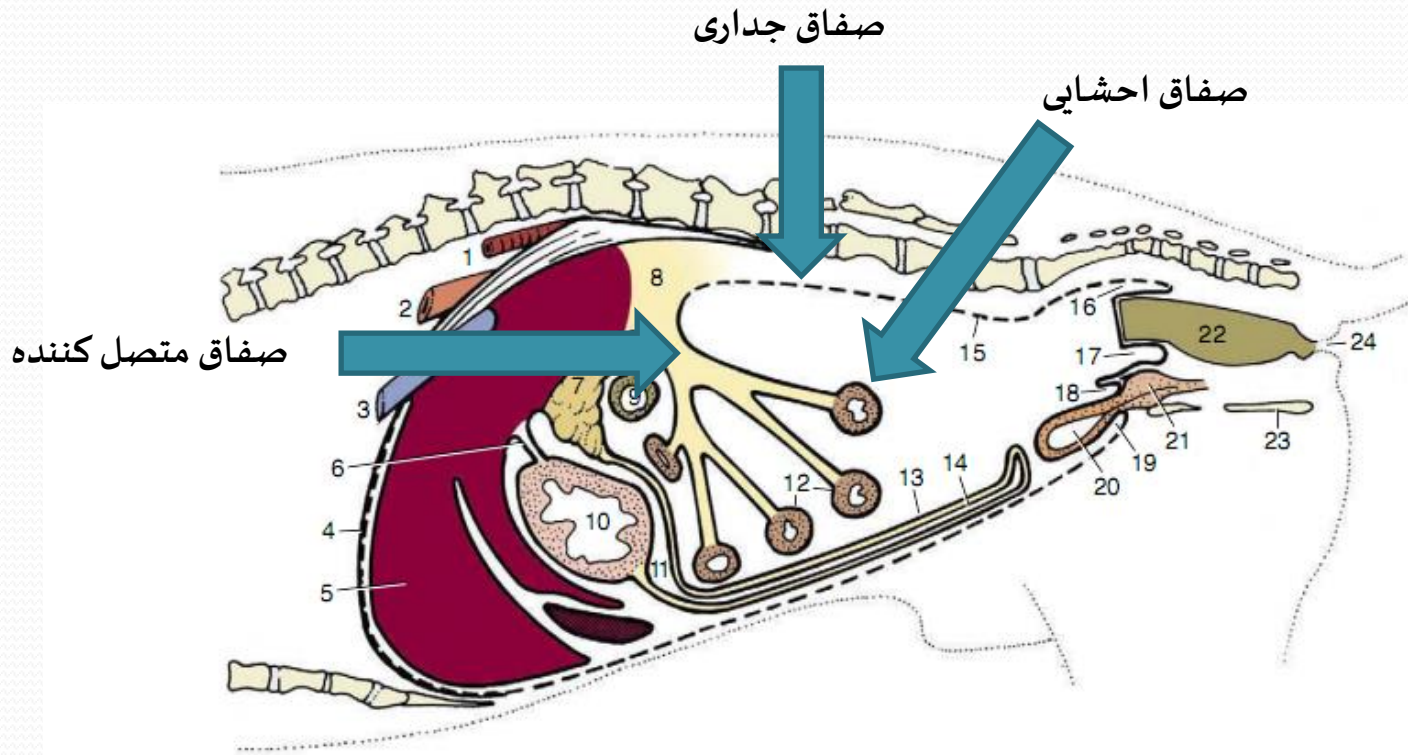
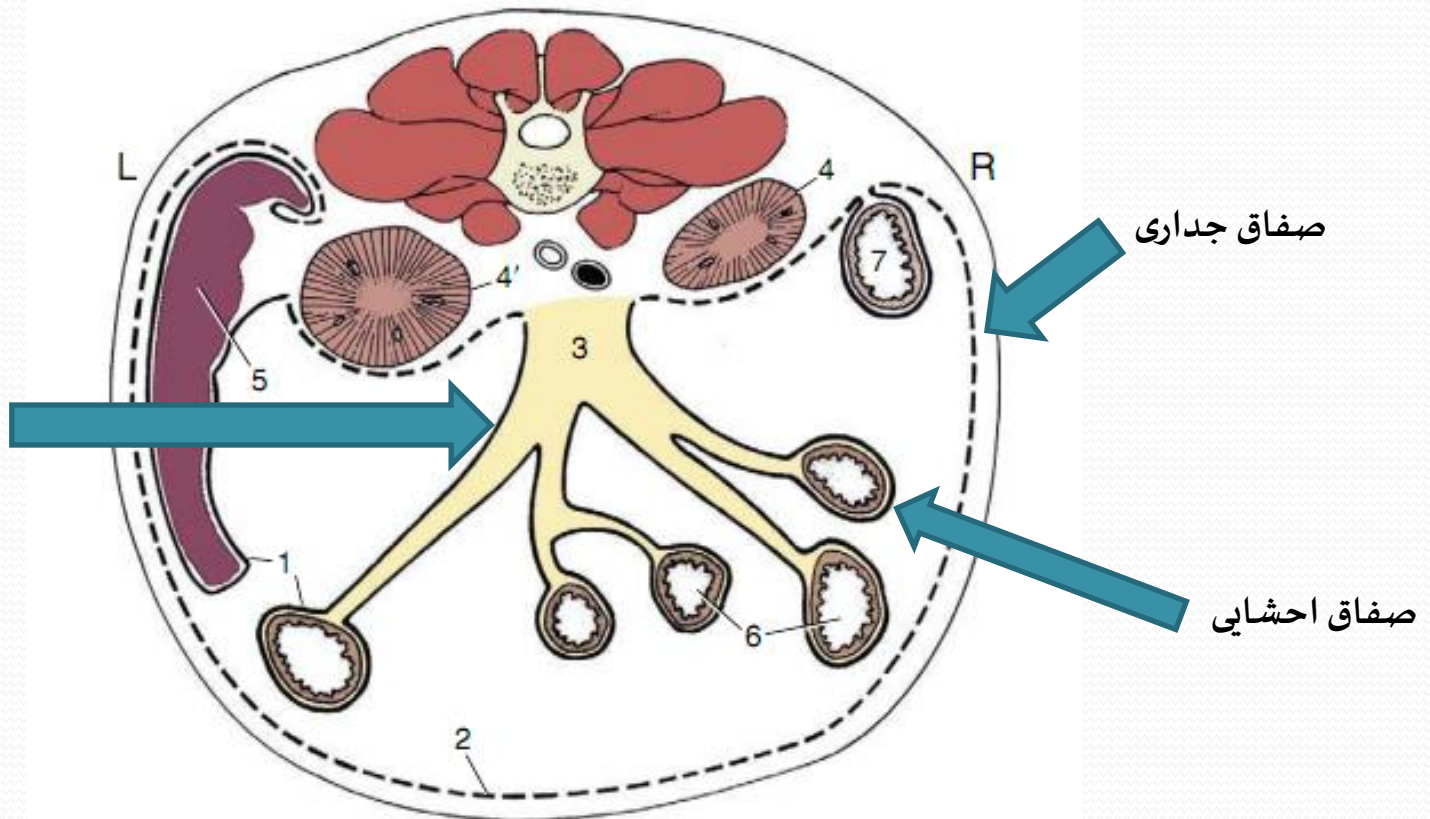


Figure 3-33 Paramedian section of the abdominal cavity of a dog to show the disposition of the peritoneum (schematic). 1, Aorta; 2, esophagus; 3, caudal vena cava; 4, diaphragm; 5, liver; 6, lesser omentum; 7, pancreas; 8, root of mesentery; 9, transverse colon; 10, stomach; 11, omental bursa; 12, small intestine; 13, deep wall of greater omentum; 14, superficial wall of greater omentum; 15, parietal peritoneum; 16, pararectal fossa; 17, rectogenital pouch; 18, vesicogenital pouch; 19, pubovesical pouch; 20, bladder; 21, prostate; 22, rectum; 23, ischium; 24, anus.

صفاق متصل کننده



صفاق جداری

صفاق احشایی

Figure 3-32 Schematic transverse section through the abdomen of the dog. 1, Visceral peritoneum (*continuous line*); 2, parietal peritoneum (*broken line*); 3, root of mesentery; 4, 4', right and left kidneys (retroperitoneal); 5, spleen; 6, jejunum; 7, descending duodenum.

Stomach

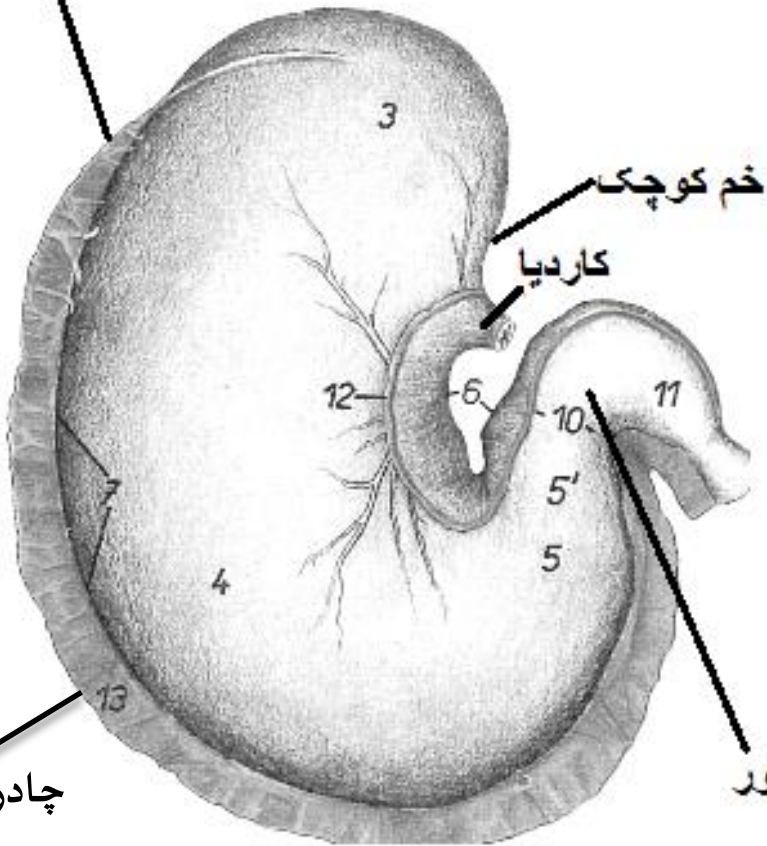
معدده

انواع معدده :

ساده : گوشتخواران و تک سمیان

مرکب : نشخوارکنندگان

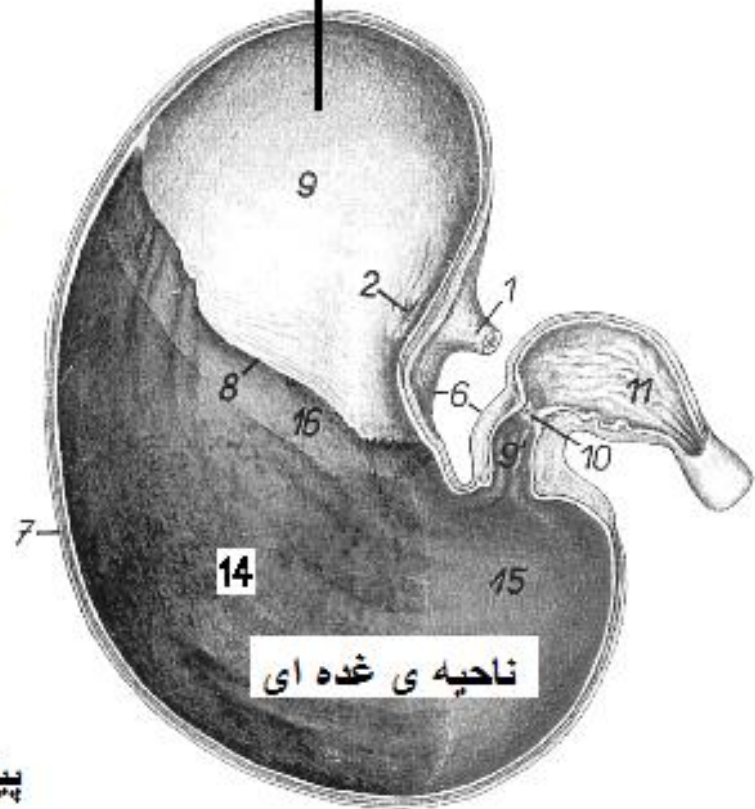
خم بزرگ



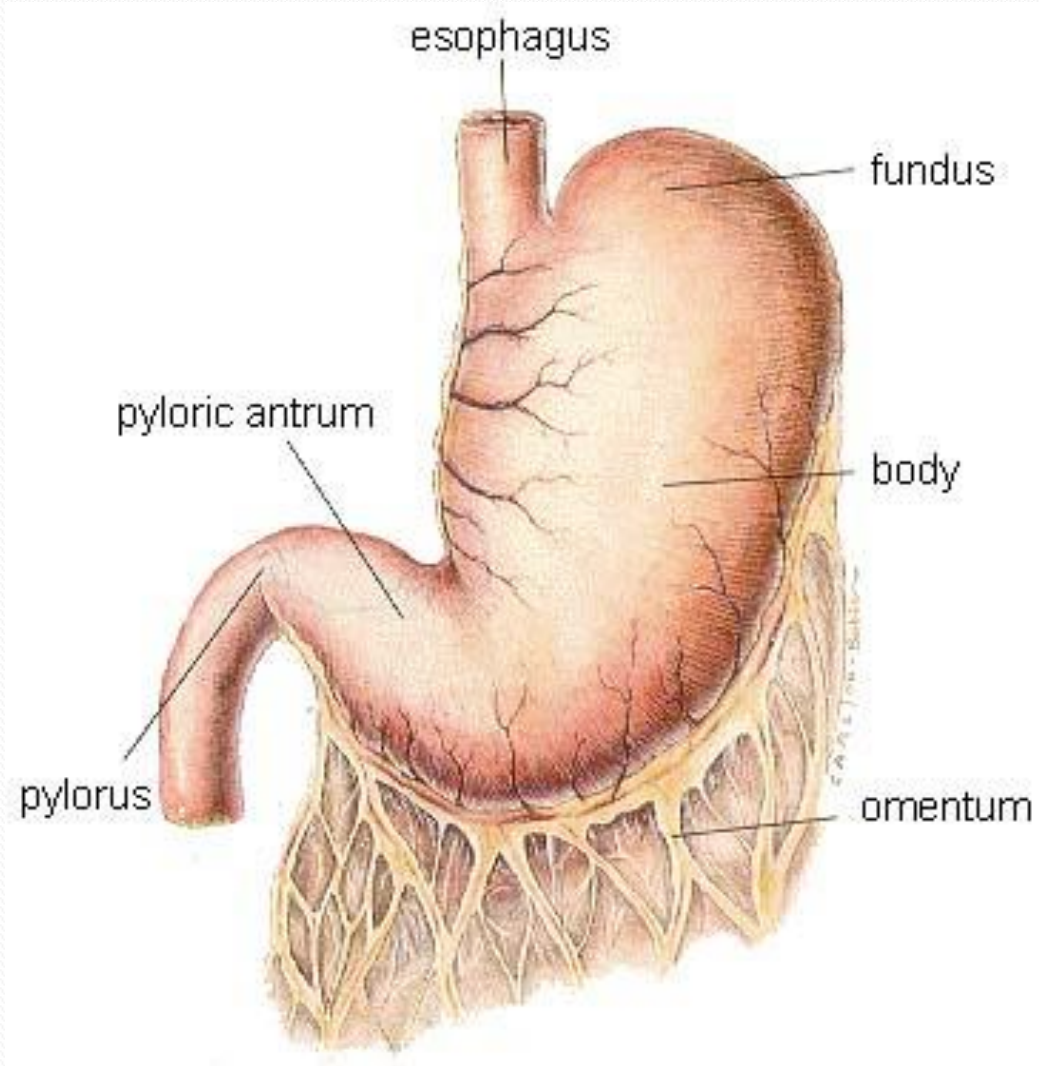
چادرینه بزرگ

پیلور

ناحیه ی غیر غده ای



ناحیه ی غده ای



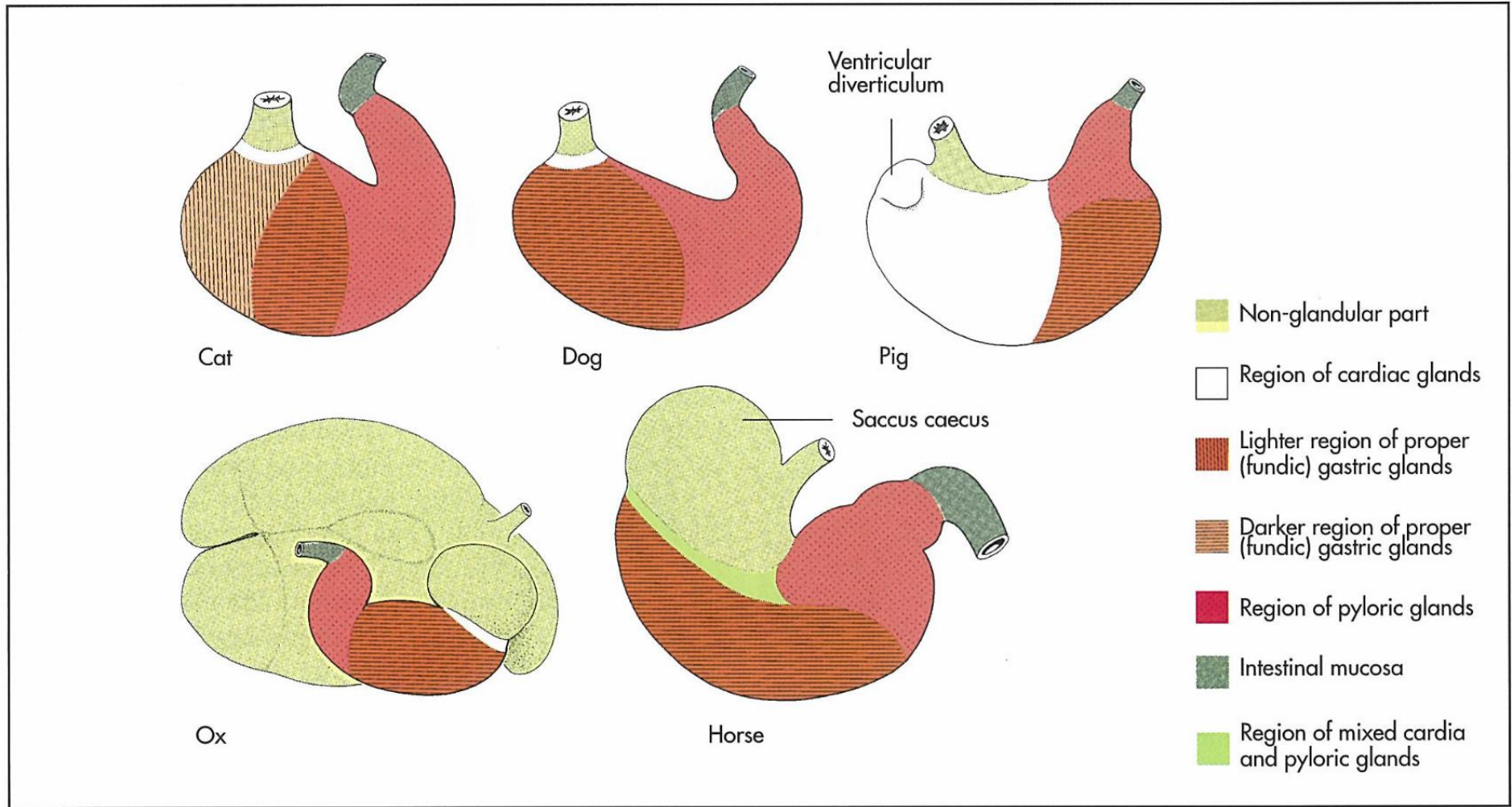


Fig 7-49. Distribution of the gastric mucosa in the domestic mammals, schematic (Liebich, 2004).

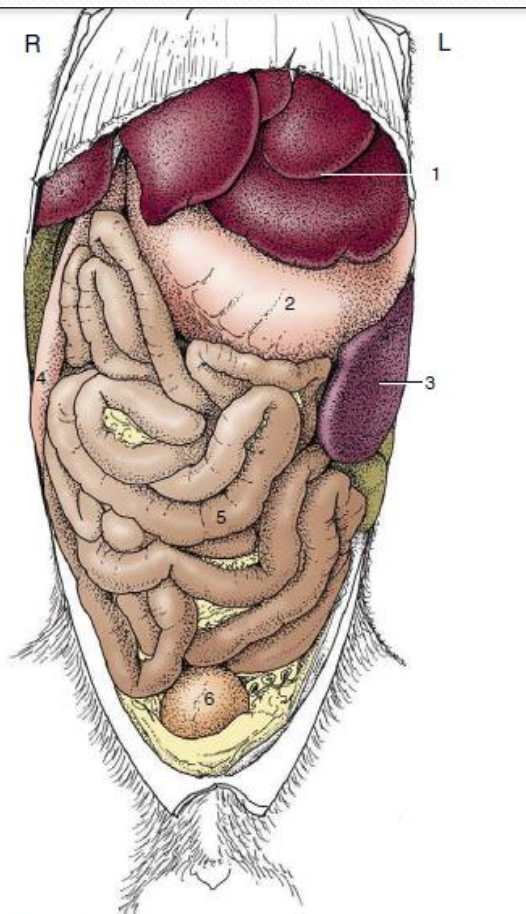


Figure 3-41 Ventral view of the abdominal organs of the dog after removal of the greater omentum. 1, Liver; 2, stomach; 3, spleen; 4, descending duodenum; 5, jejunum; 6, bladder; 7, diaphragm.

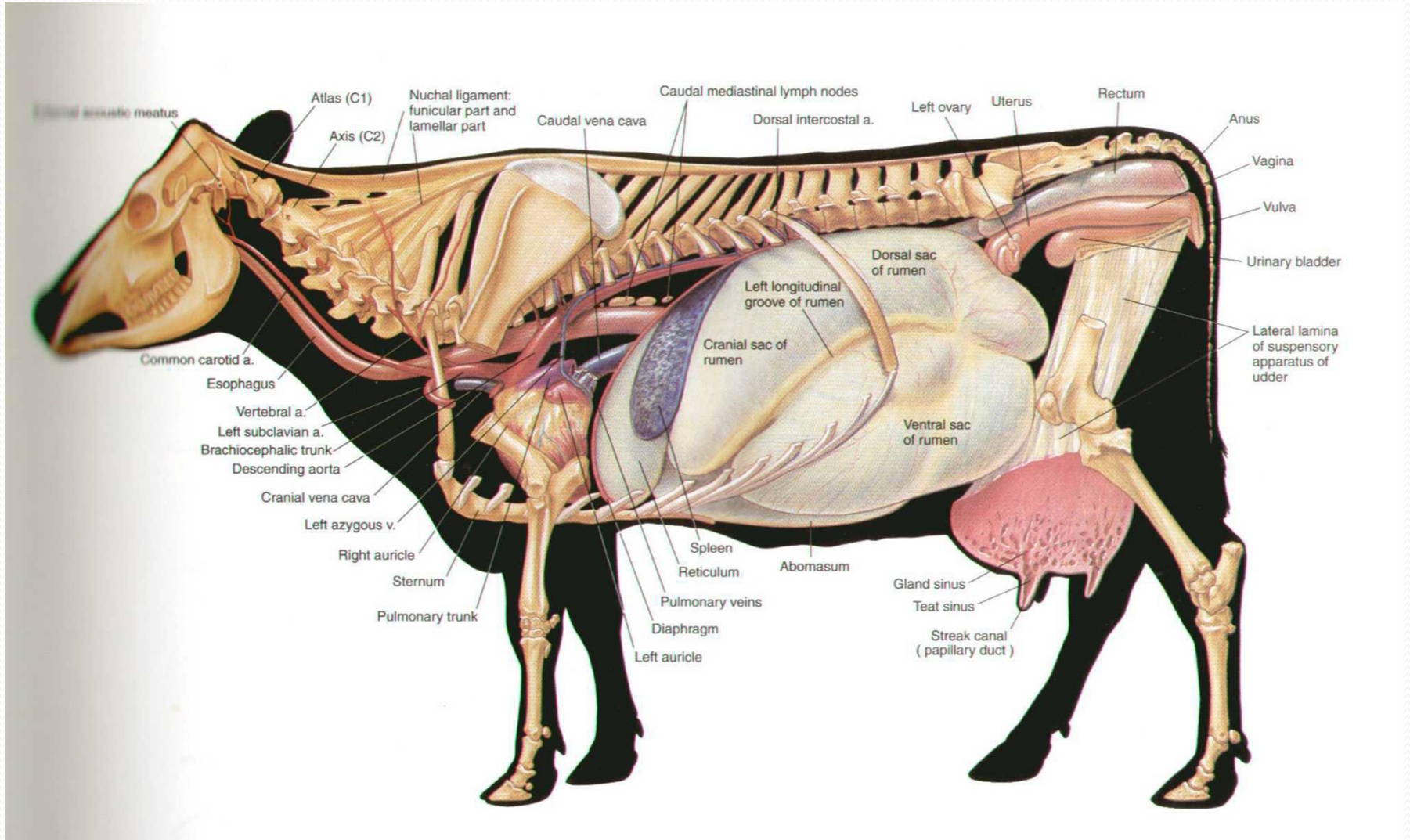


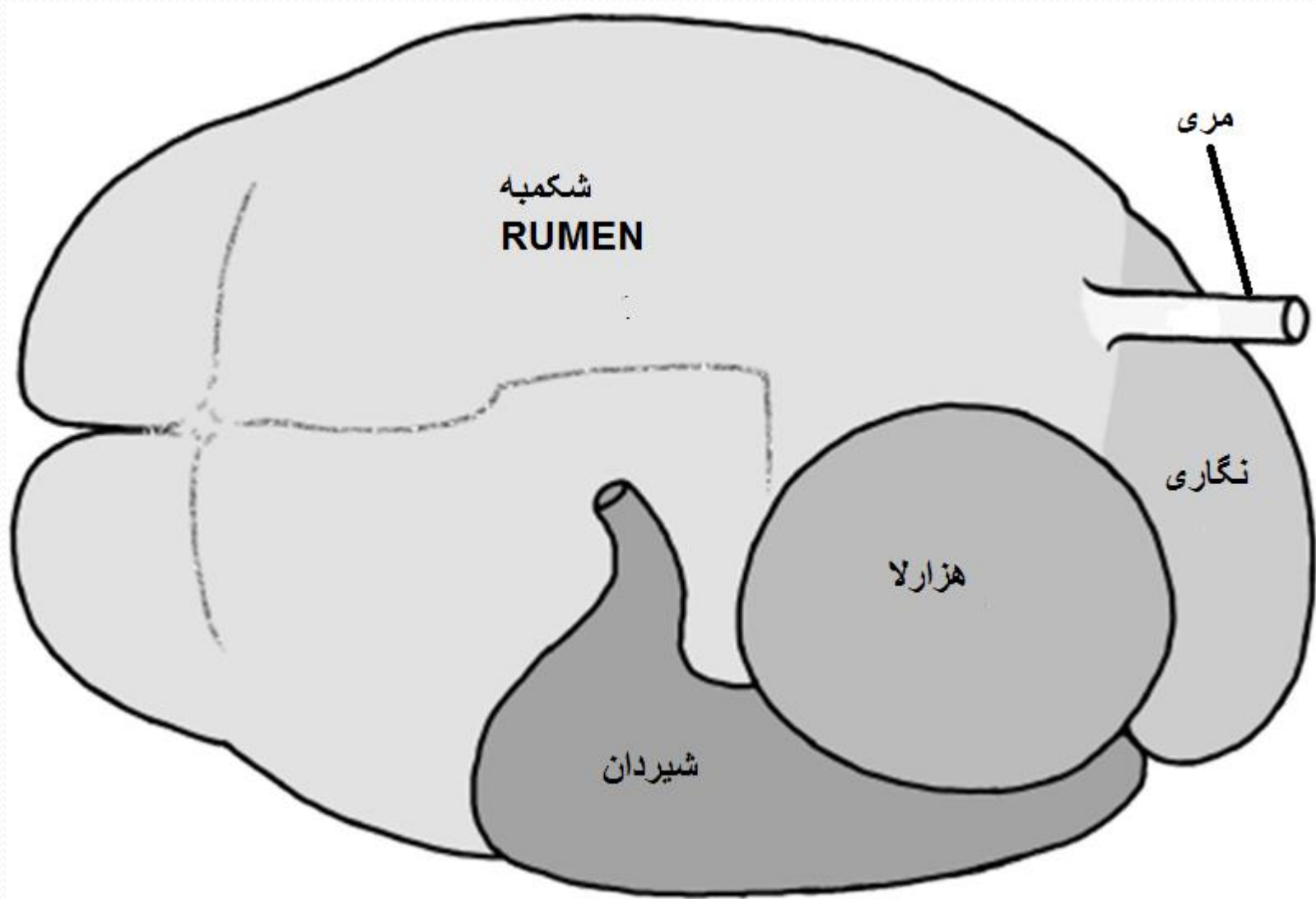
Figure 14-1 Ventral view of a canine trunk, demonstrating the so-called intrathoracic part of the abdomen. 1, Heart; 2, diaphragm; 3, distended stomach (with attachment of greater omentum); 4, spleen; 5, duodenum.

محوطه شکمی در سگ

Stomach in Ruminant

- Rumen شکمبه / غیر غده ای
- Reticulum نگاری / غیر غده ای
- Omasum هزارلا / غیر غده ای
- Abomasum شیردان / غده ای (معدده ی اصلی)





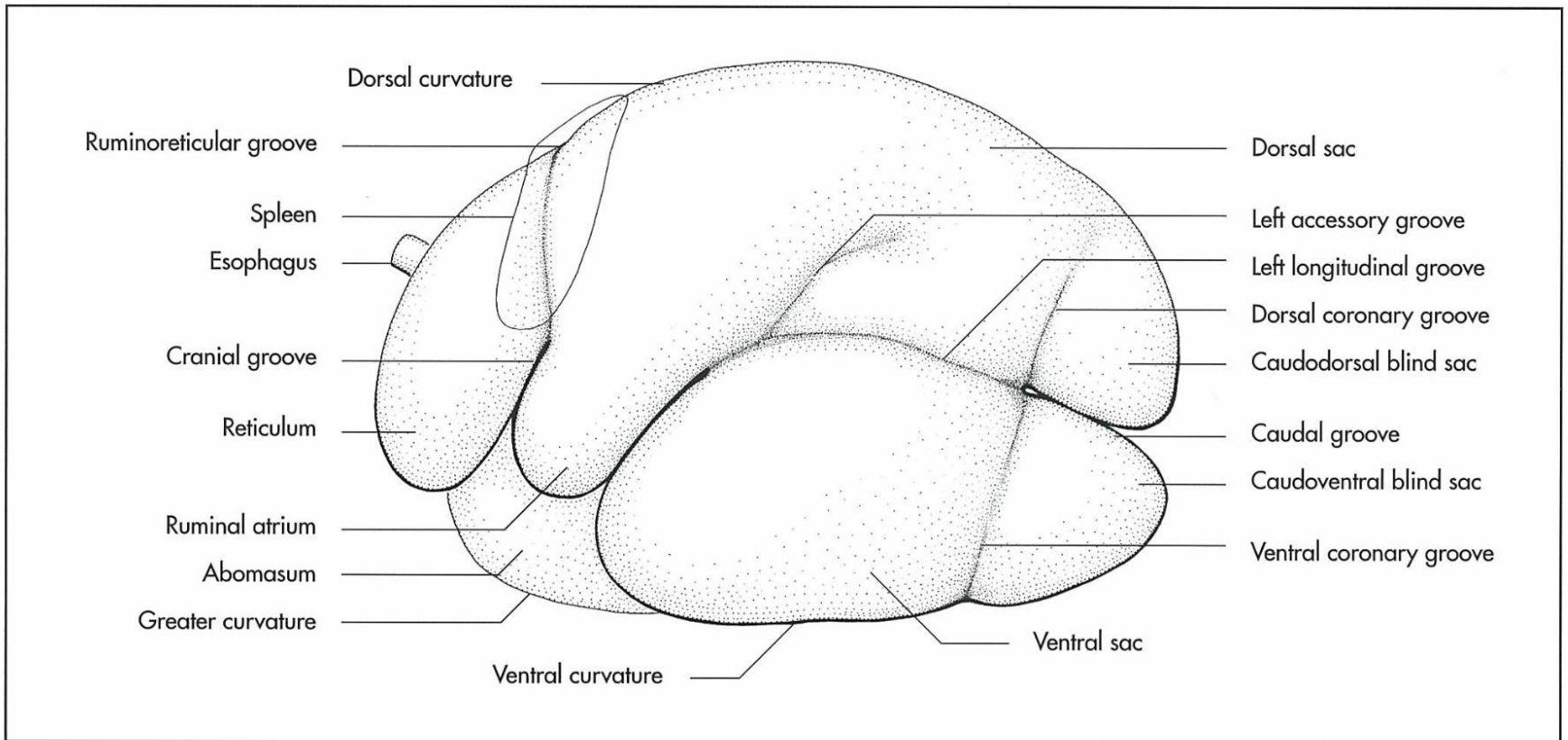


Fig 7-65. Compartments of the stomach of the ox, left lateral aspect, schematic (Schaller, 1992).

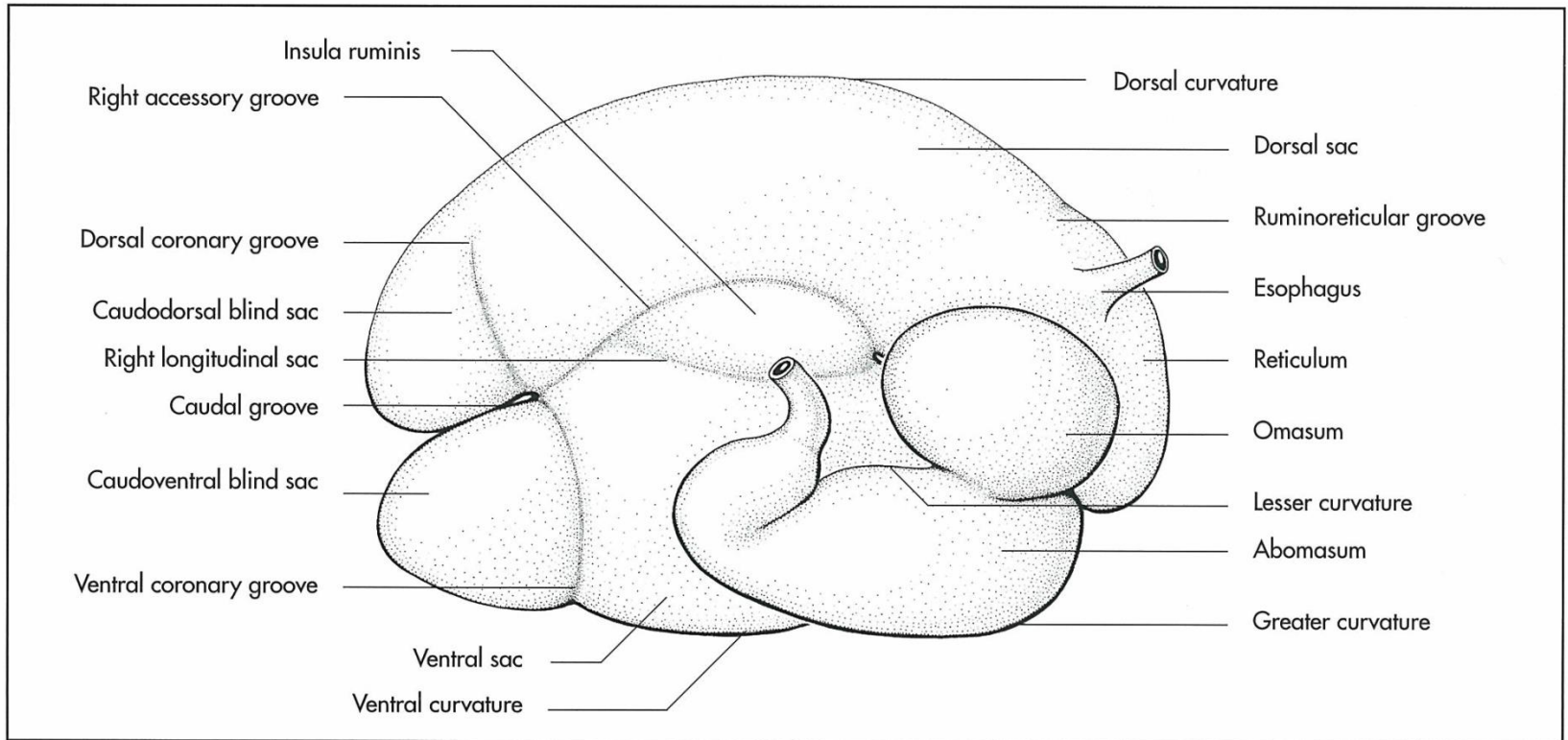


Fig 7-66. Compartments of the stomach of the ox, right lateral aspect, schematic (Schaller, 1992).



Intestines

روده ی کوچک (Small intestine)

دوازدهه

تهی روده

ایلیوم

روده ی بزرگ (Large intestine)

روده ی کور (سکوم)

کولون ها (قولون ها)

راست روده (رکتوم)

مقعد

دوازدهه شامل: بخش قدامی (جلویی) ، بخش نزولی ، بخش صعودی

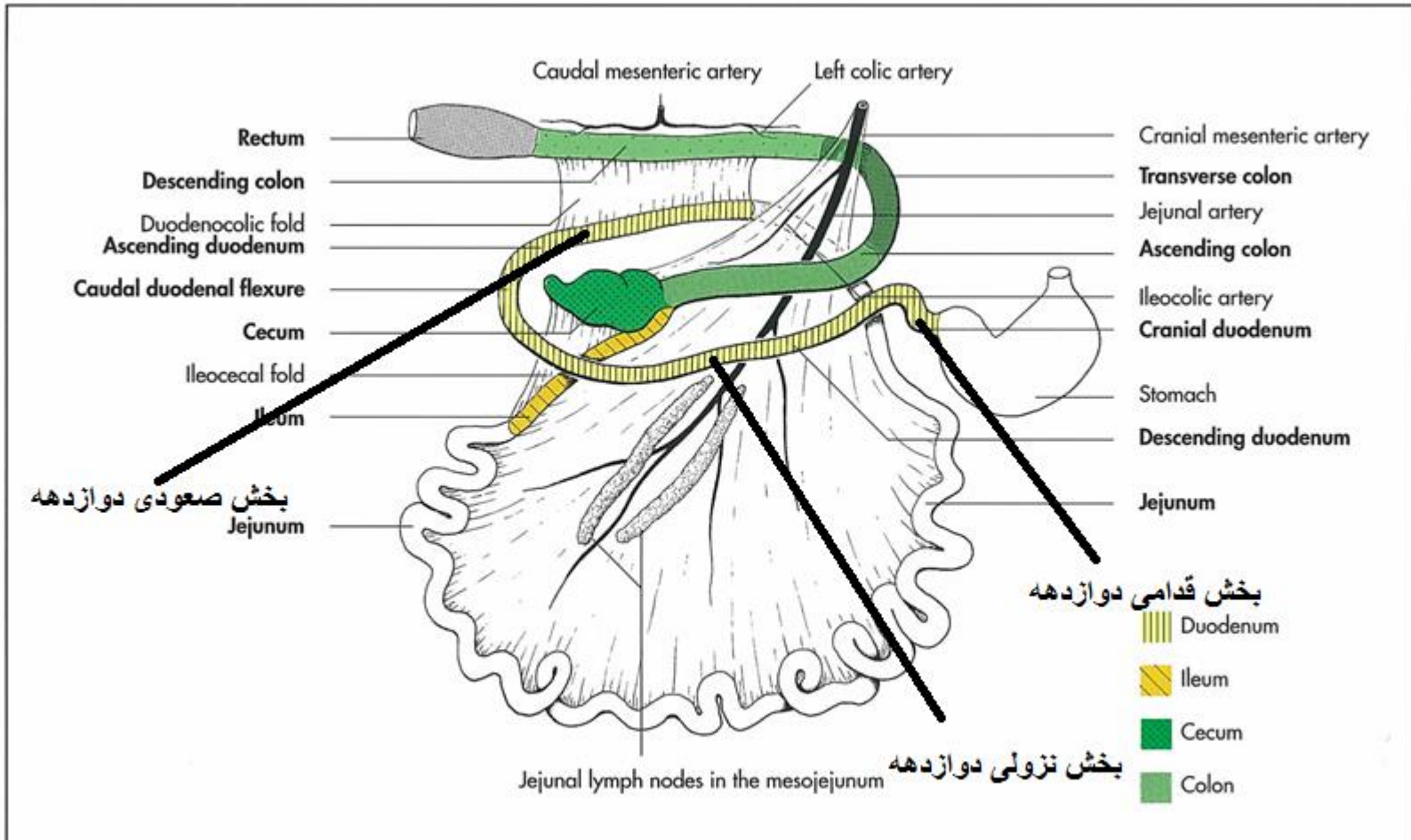
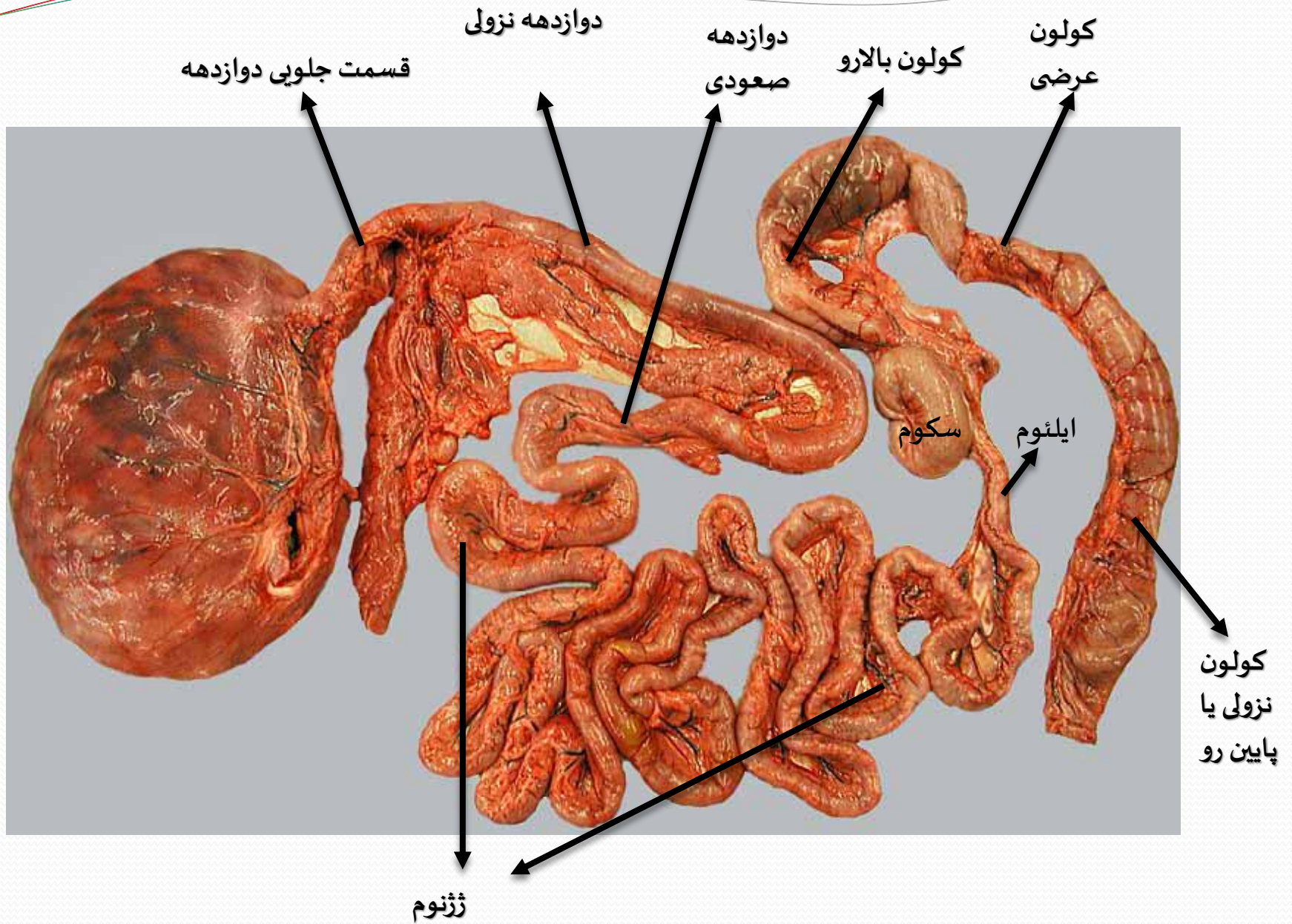
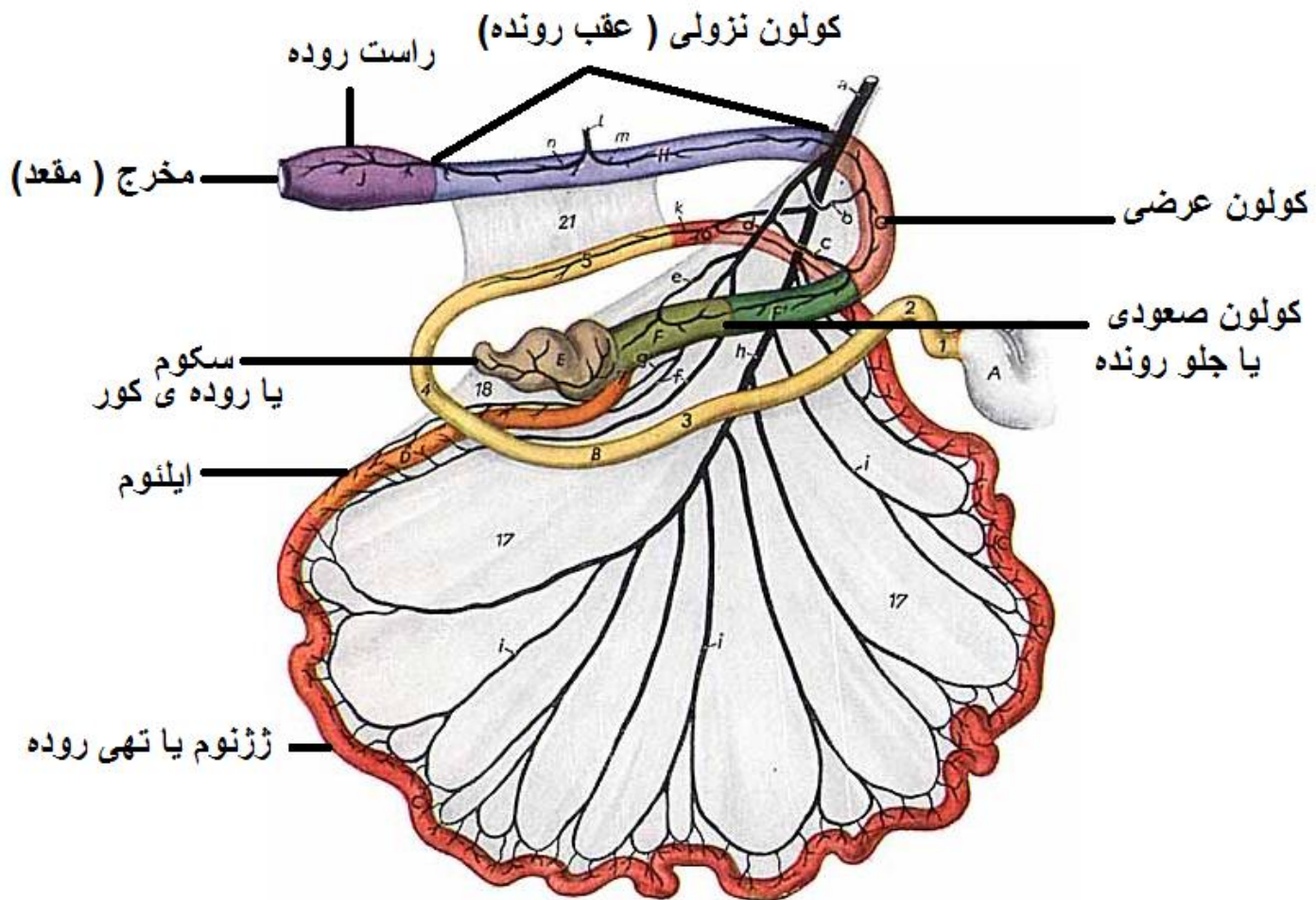


Fig 7-85. Intestinal tract of the dog, schematic (Ghetie, 1958).

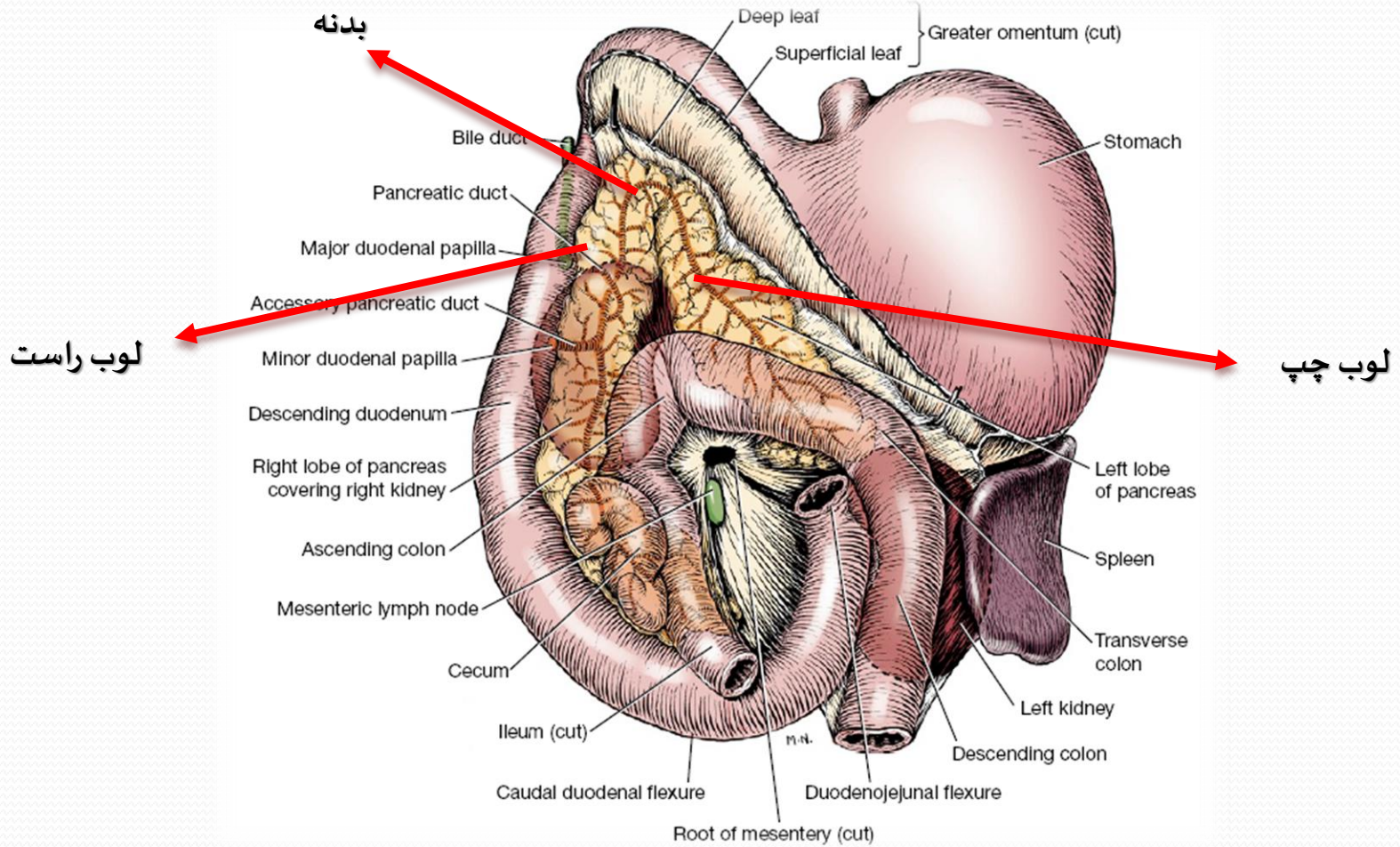


روده ی بزرگ : سکوم ، کولون ها ، راست روده مخرج
 کولون : صعودی (جلو رونده) ، عرضی ، نزولی



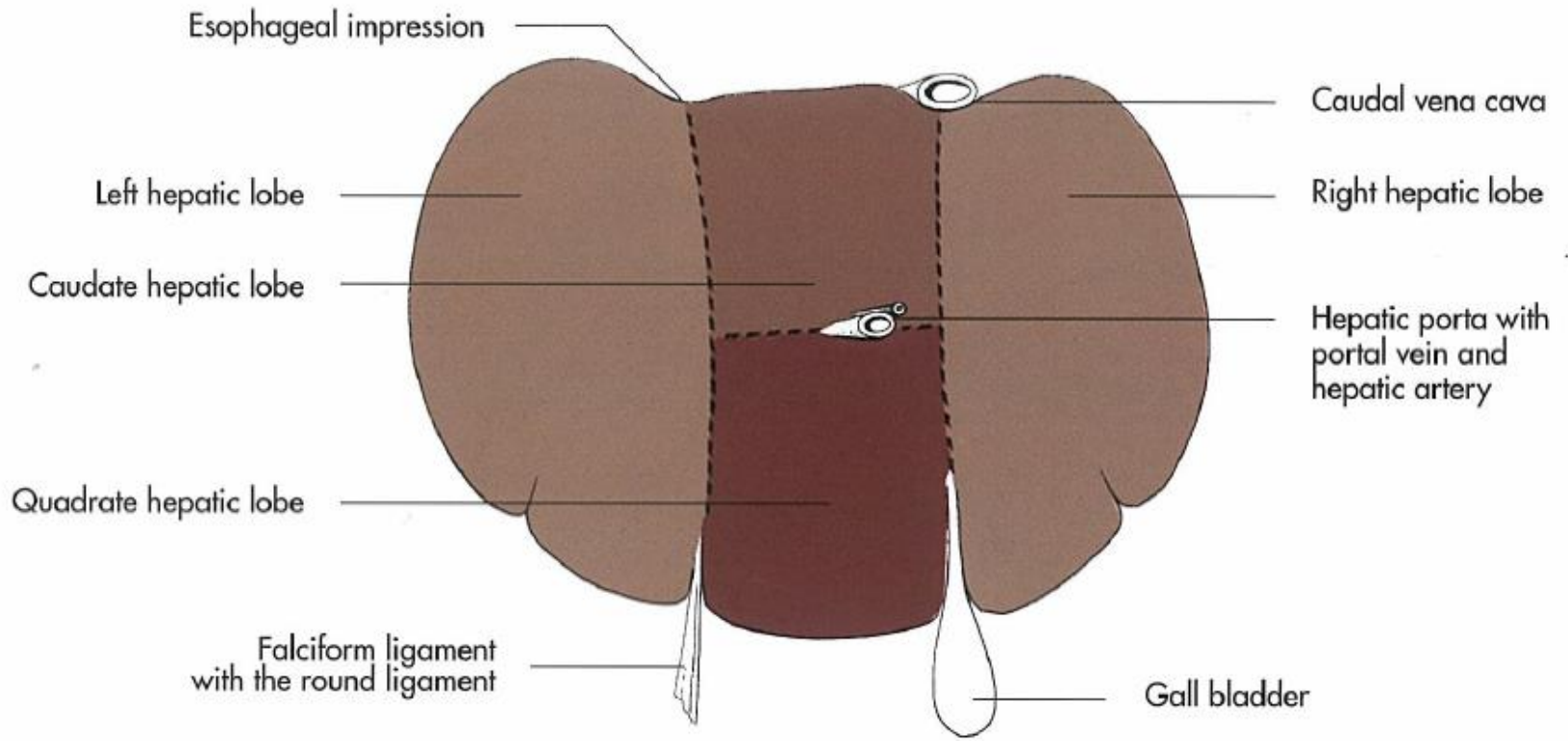
Pancreas

پانکراس



liver

کبد



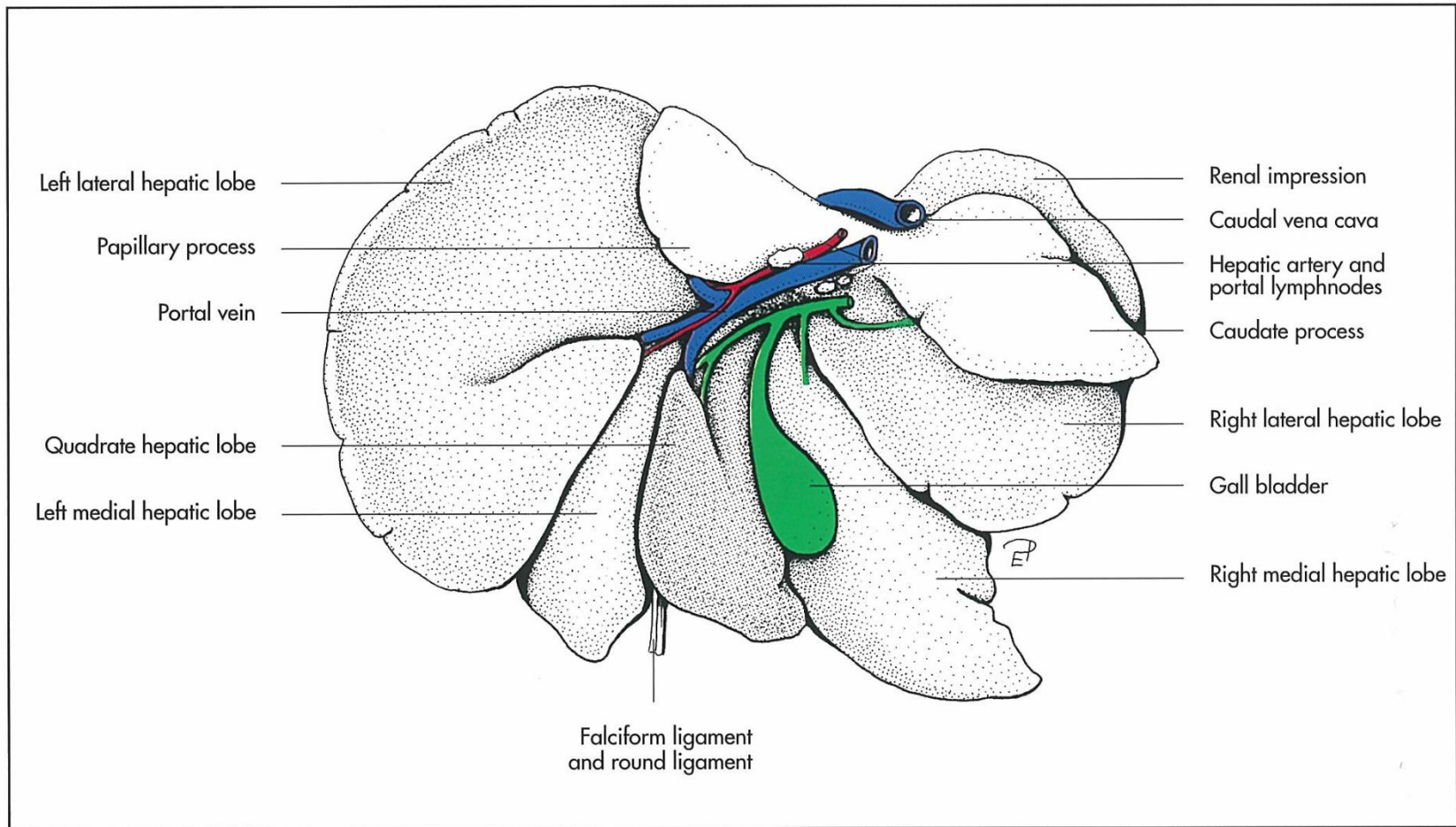
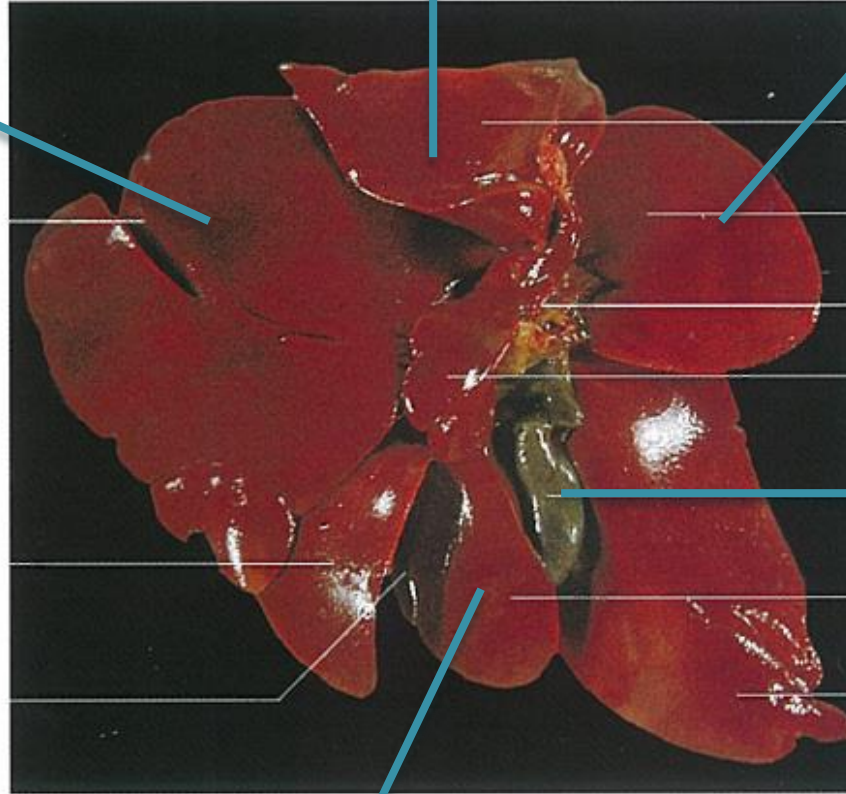


Fig 7-97. Liver of the dog, schematic, visceral surface.

لوب دمی

لوب راست

لوب چپ



Left lateral hepatic lobe

Caudate hepatic lobe
(Caudate process)

Right lateral hepatic lobe

Hepatic portal

Papillary process

Gall bladder کیسه صفرا

Left medial hepatic lobe

Quadrangle hepatic lobe

Incision of the round ligament

Right medial hepatic lobe

Liver of a cat, visceral surface (König, 1992).

لوب مربعی

