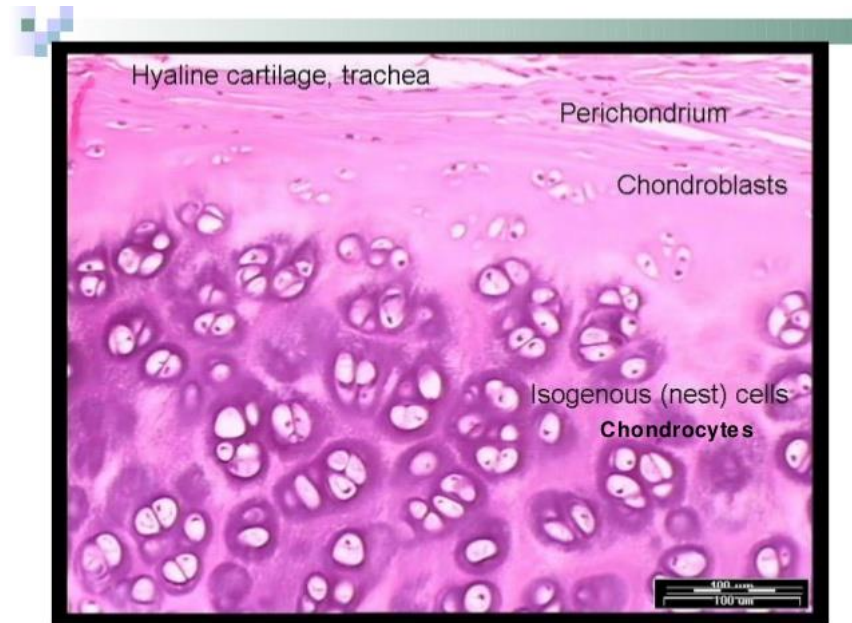
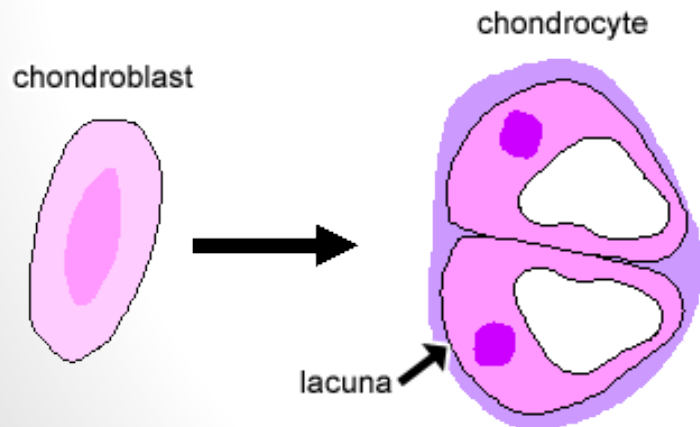


# Cartilage and Bone tissues

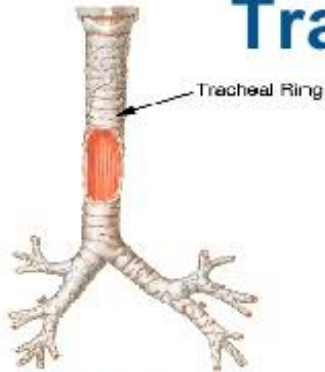
# Cartilage

**Cartilage** is a special form of connective tissue. It exhibits tensile strength, provides firm structural support for soft tissues, allows flexibility without distortion, and is resilient to compression. Cartilage consists mainly of cells called **chondrocytes** and **chondroblasts** that synthesize the extensive **extracellular matrix** (connective tissue fibers and ground substance). Three main types of cartilage are found in the body: hyaline, elastic, and fibrocartilage. Cartilage is classified based on the amount and types of fibers that are present in the extracellular matrix.





# Tracheal Hyaline Cartilage



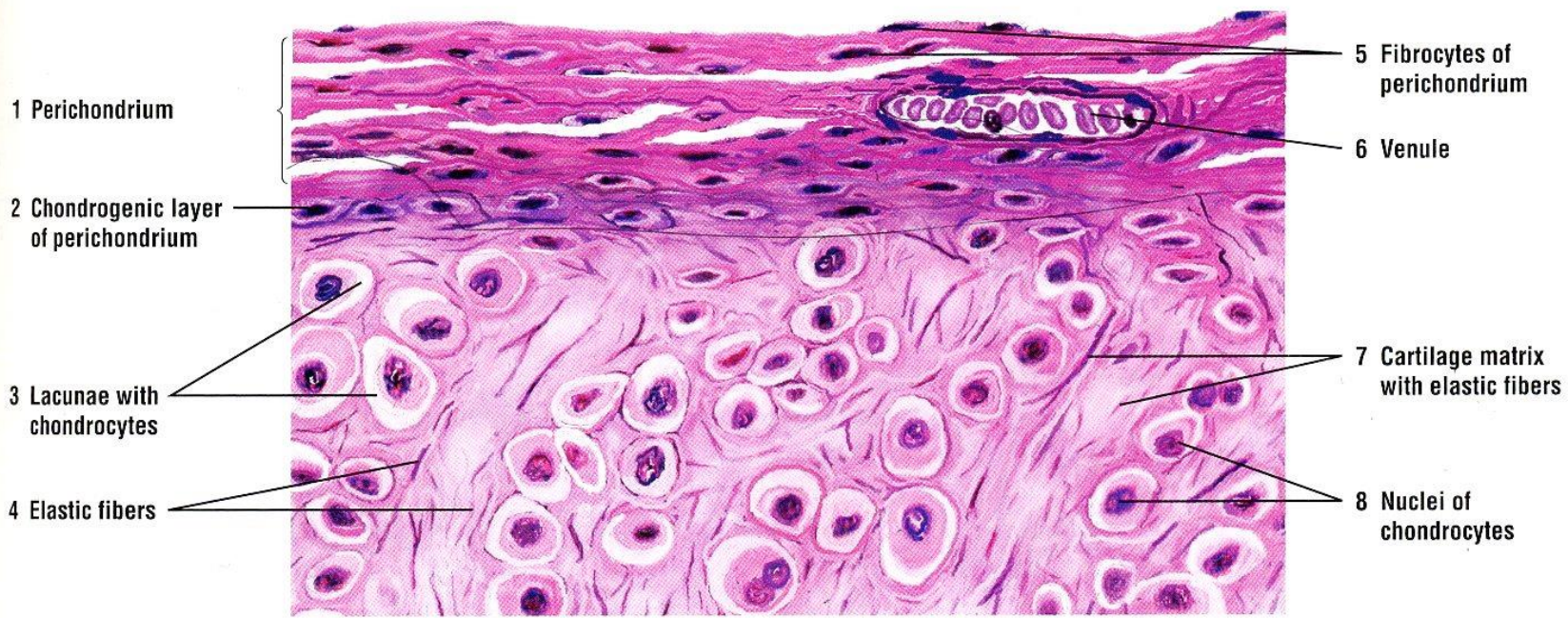
PD-INEL Netter 2<sup>nd</sup> Ed. Plate 190

(Tracheal lumen)



PD-INEL Michigan Medical School Histology Slide Collection





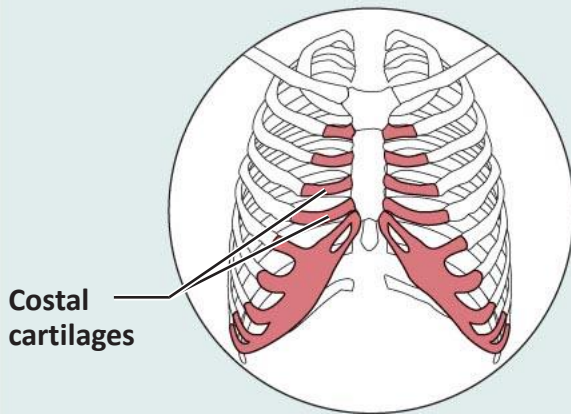


# Cartilage: hyaline

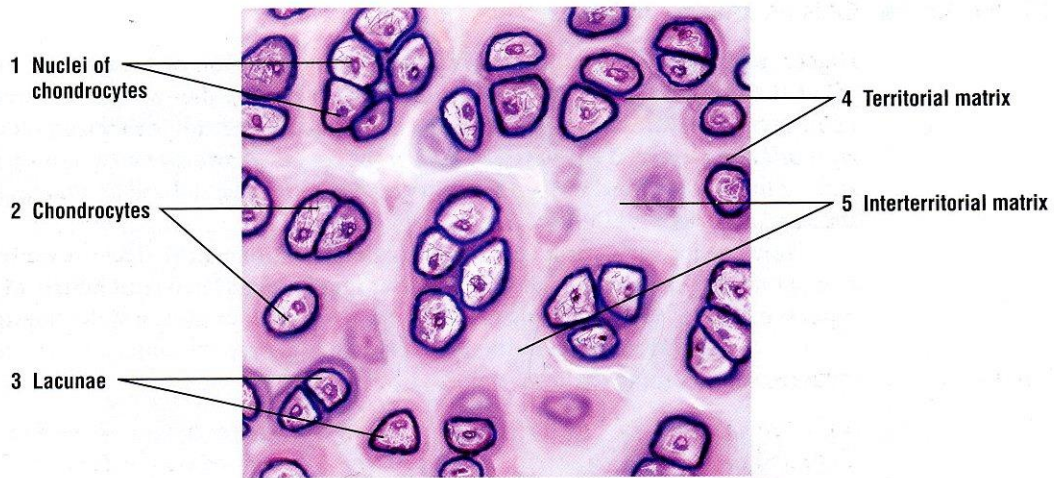
**Description:** Amorphous but firm matrix; collagen fibers form an imperceptible network; chondroblasts produce the matrix and when mature (chondrocytes) lie in lacunae.

**Function:** Supports and reinforces; has resilient cushioning properties; resists compressive stress.

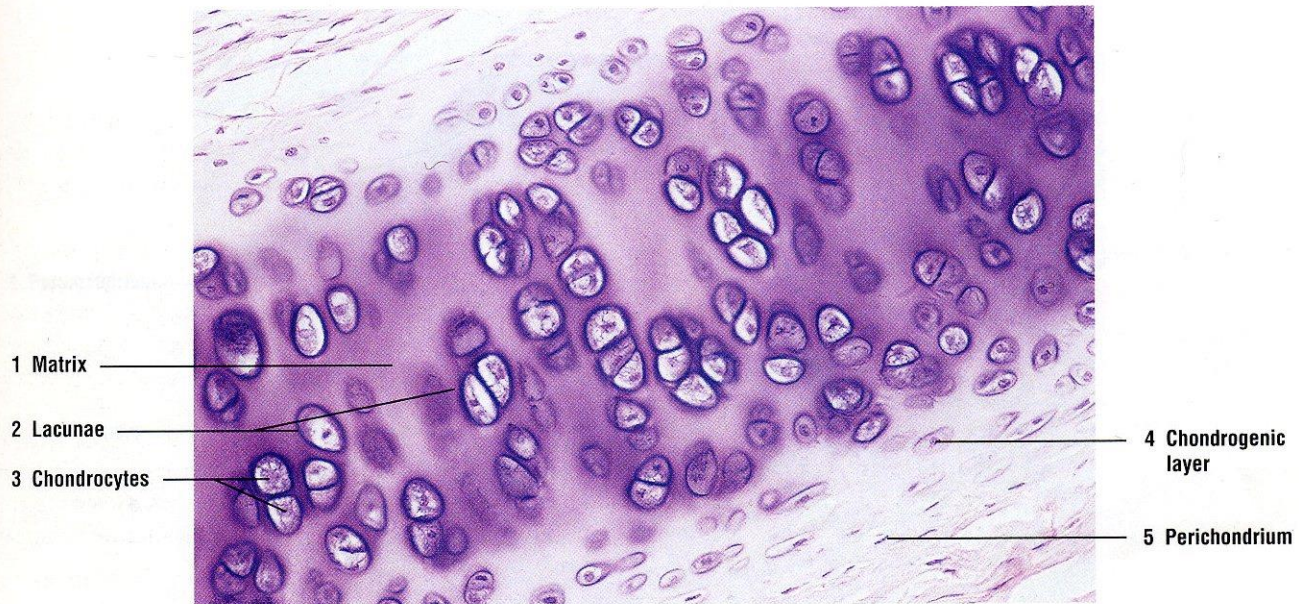
**Location:** Forms most of the embryonic skeleton; covers the ends of long bones in joint cavities; forms costal cartilages of the ribs; cartilages of the nose, trachea, and larynx.



**Photomicrograph:** Hyaline cartilage from the trachea (750x).



**FIGURE 4.3** ■ Cells and matrix of mature hyaline cartilage. Stain: hematoxylin and eosin. High magnification.



**FIGURE 4.4** ■ Hyaline cartilage: developing bone. Stain: hematoxylin and eosin. 80×

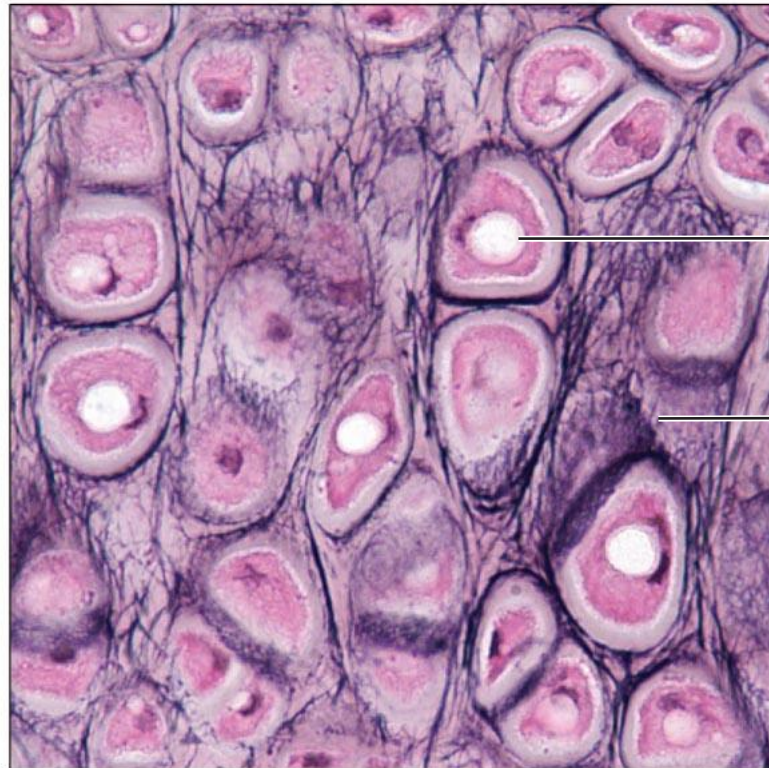
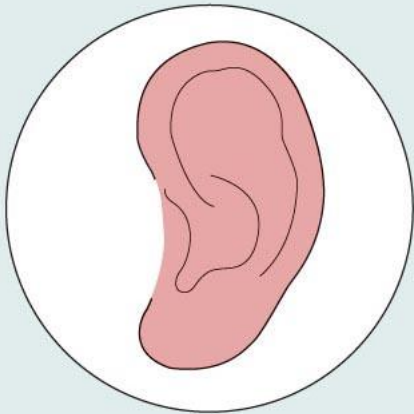


# Cartilage: elastic

**Description:** Similar to hyaline cartilage, but more elastic fibers in matrix.

**Function:** Maintains the shape of a structure while allowing great flexibility.

**Location:** Supports the external ear (pinna); epiglottis.

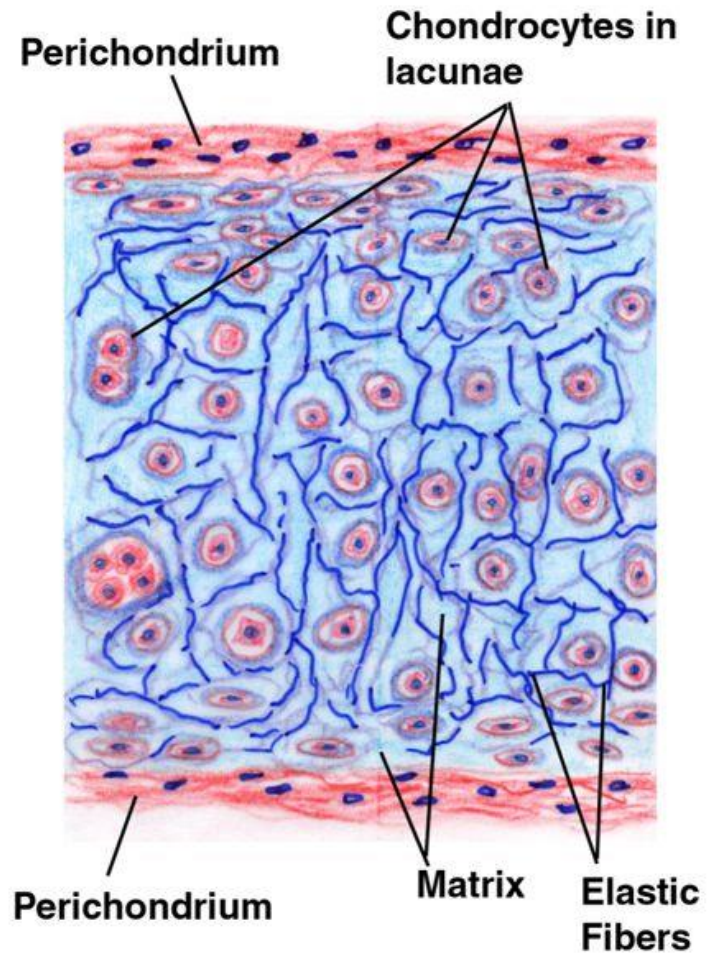
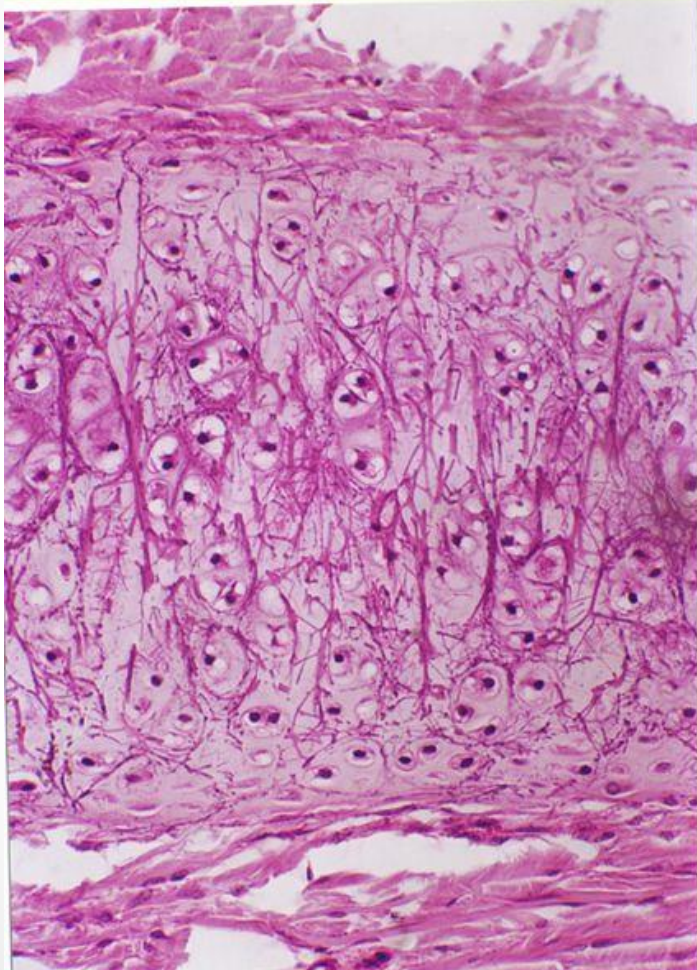


Chondrocyte  
in lacuna

Matrix

**Photomicrograph:** Elastic cartilage from the human ear pinna; forms the flexible skeleton of the ear (800x).

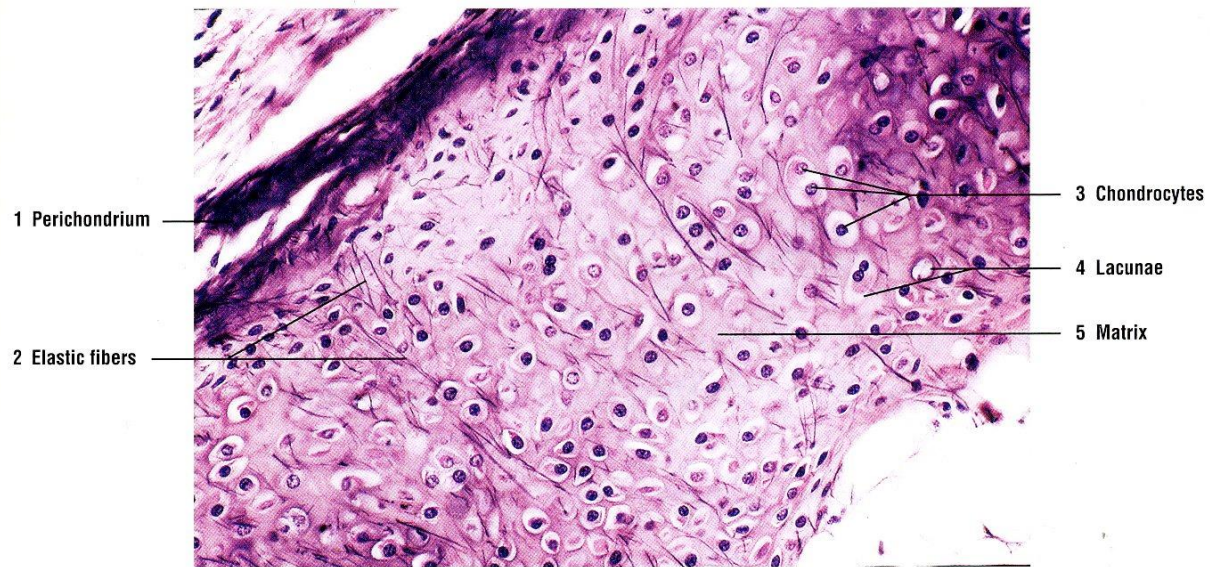
# Elastic Cartilage (Epiglottis)







**FIGURE 4.5** ■ Elastic cartilage: epiglottis. Stain: silver. High magnification.



**FIGURE 4.6** ■ Elastic cartilage: epiglottis. Stain: silver. 80×

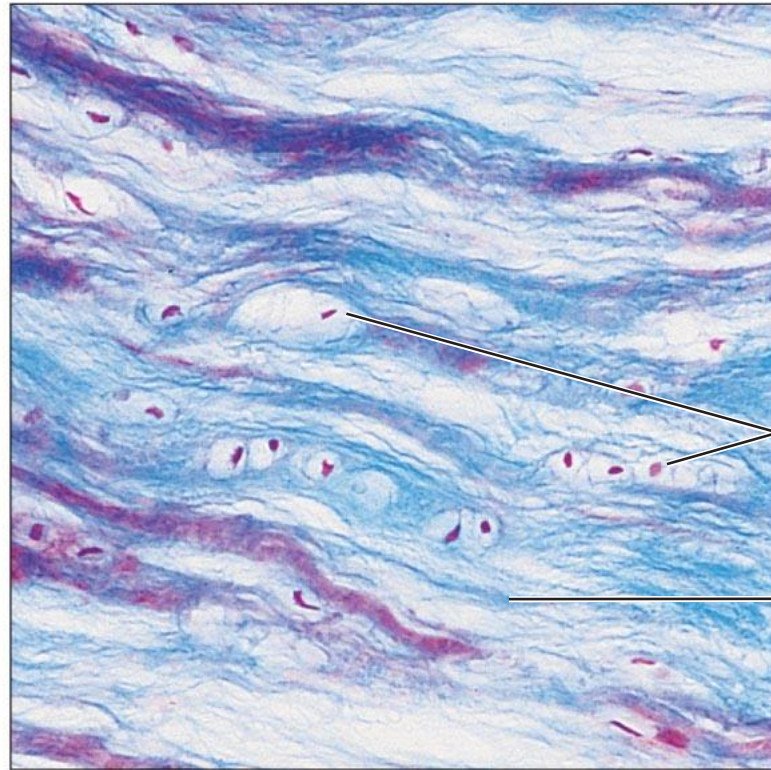
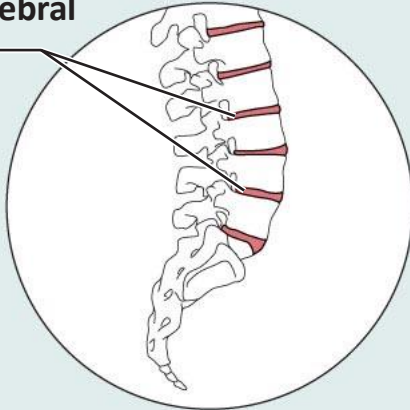
# Cartilage: fibrocartilage

**Description:** Matrix similar to but less firm than that in hyaline cartilage; thick collagen fibers predominate.

**Function:** Tensile strength with the ability to absorb compressive shock.

**Location:** Intervertebral discs; pubic symphysis; discs of knee joint.

Intervertebral discs

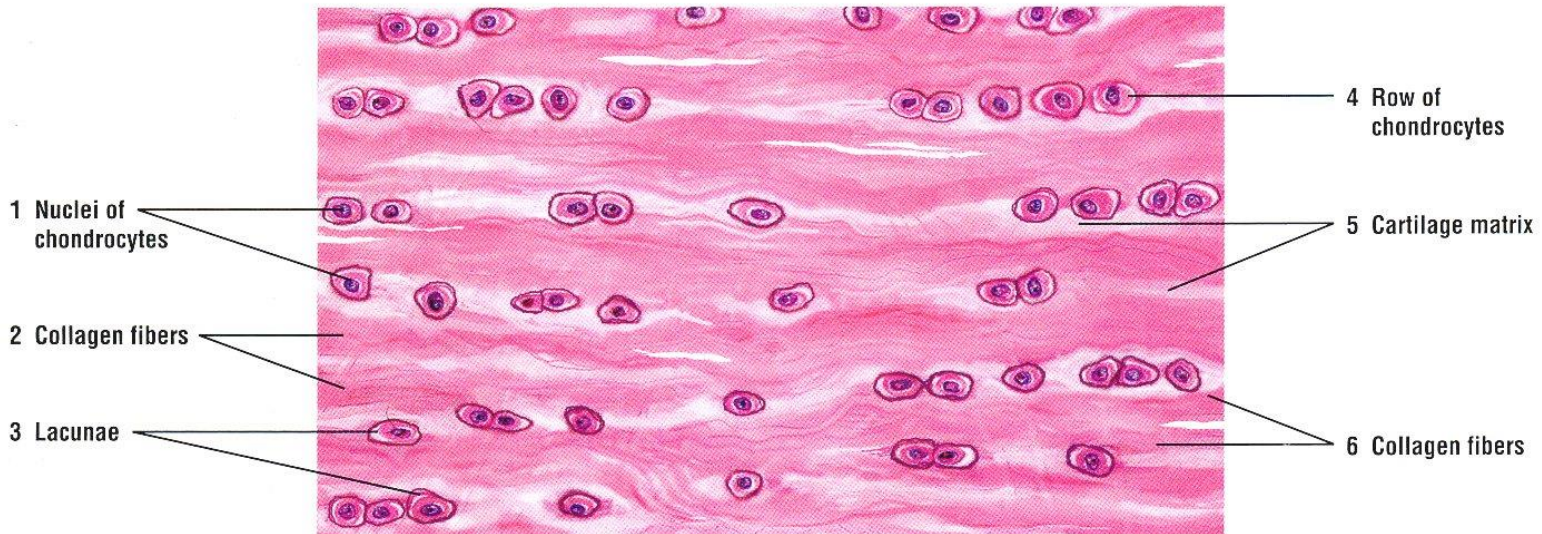


Chondrocytes in lacunae

Collagen fiber

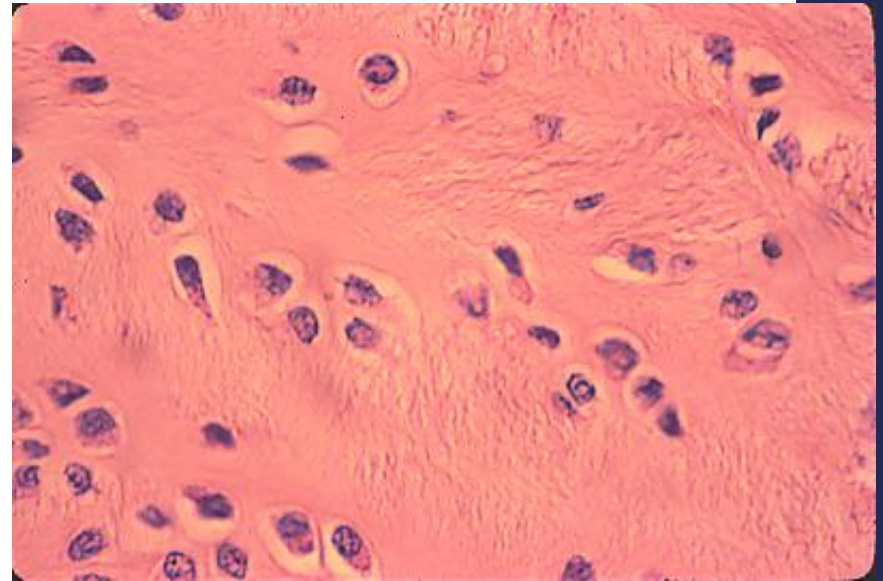
**Photomicrograph:** Fibrocartilage of an intervertebral disc (125x). Special staining produced the blue color seen.





**FIGURE 4.7** ■ Fibrous cartilage: intervertebral disk. Stain: hematoxylin and eosin. High magnification.

- This shows a higher magnification view of **fibrocartilage** illustrating the collagen fibers within the matrix surrounding the chondrocytes. This type of cartilage is often found between hyaline cartilage and dense connective tissue.





# BONE FUNCTION

- Support
- Protection (protect internal organs)
- Movement (provide leverage system for skeletal muscles, tendons, ligaments and joints)
- Mineral homeostasis (bones act as reserves of minerals important for the body like calcium or phosphorus)
- Hematopoiesis: blood cell formation
- Storage of adipose tissue: yellow marrow

## BONE ANATOMY

**Diaphysis:** long shaft of bone

**Epiphysis:** ends of bone

**Epiphyseal plate:** growth plate

**Metaphysis:** b/w epiphysis and diaphysis

**Articular cartilage:** covers epiphysis

**Periosteum:** bone covering (pain sensitive)

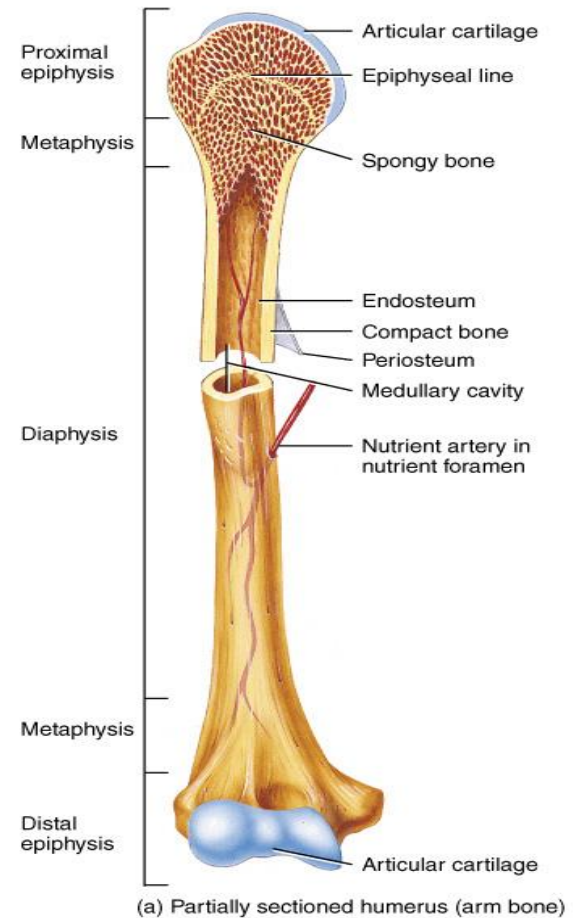
**Sharpey's fibers:** periosteum attaches to underlying bone

**Medullary cavity:** Hollow chamber in bone

- red marrow produces blood cells

- yellow marrow is adipose

**Endosteum:** thin layer lining the medullary cavity



© John Wiley & Sons, Inc.

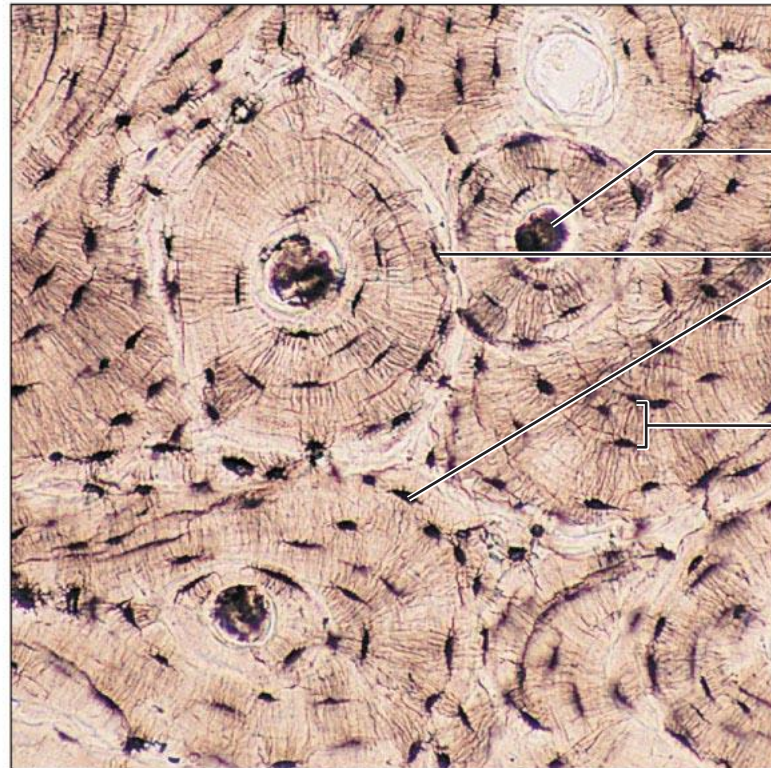
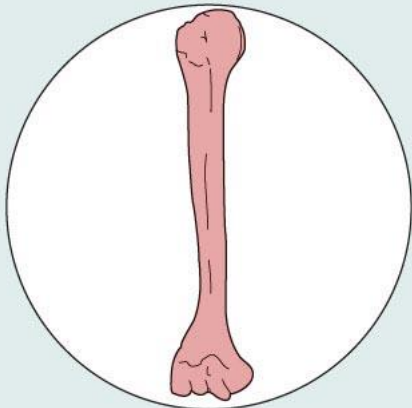


# Osseous tissue

**Description:** Hard, calcified matrix containing many collagen fibers; osteocytes lie in lacunae. Very well vascularized.

**Function:** Bone supports and protects (by enclosing); provides levers for the muscles to act on; stores calcium and other minerals and fat; marrow inside bones is the site for blood cell formation (hematopoiesis).

**Location:** Bones



Central canal  
Lacunae  
Lamella

**Photomicrograph:** Cross-sectional view of bone (125x).

## The Cells of Bone

There are different types of cells present in bone tissue, and each function differently.

### Bone Cell Function

#### Osteogenic cells

Immature cells capable of differentiating (changing) into osteoblasts.

#### Osteoblasts

Cells capable of forming bone by secreting osteoid (proteins such as collagen) that form bone matrix, and eventually mineralized bone.

#### Osteocytes

Once an osteoblast is completely surrounded by bone matrix, it stops secreting osteoid and becomes an osteocyte. Osteocytes function in bone metabolism.

#### Osteoclasts

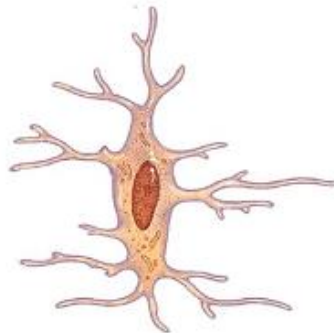
Cells that work opposite of osteoblasts and are capable of resorbing and breaking down bone structure. Osteoclasts use lysosomal enzymes and hydrochloric acid to break down bone.



Osteogenic cell  
(develops into an osteoblast)



Osteoblast  
(forms bone matrix)

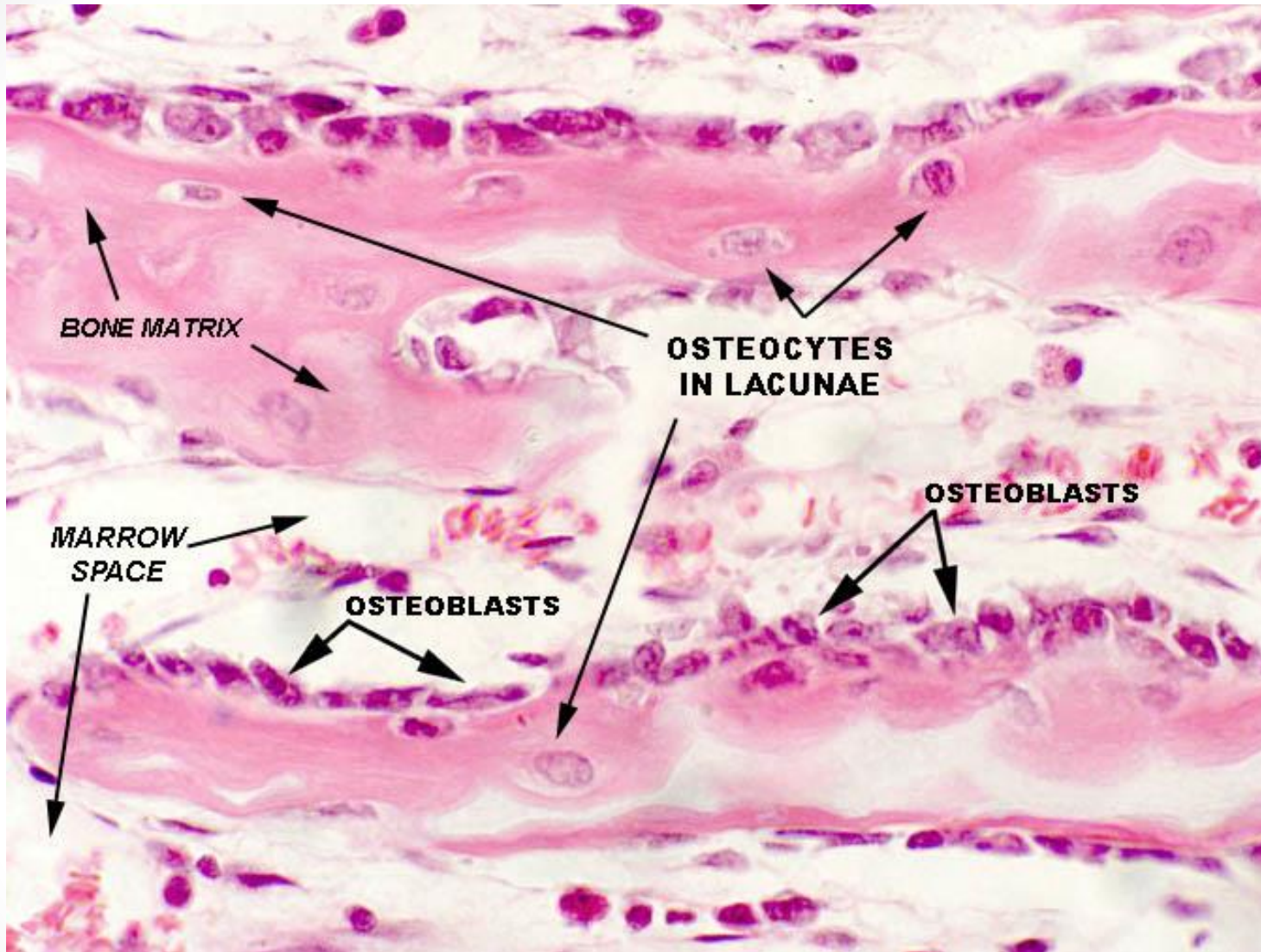


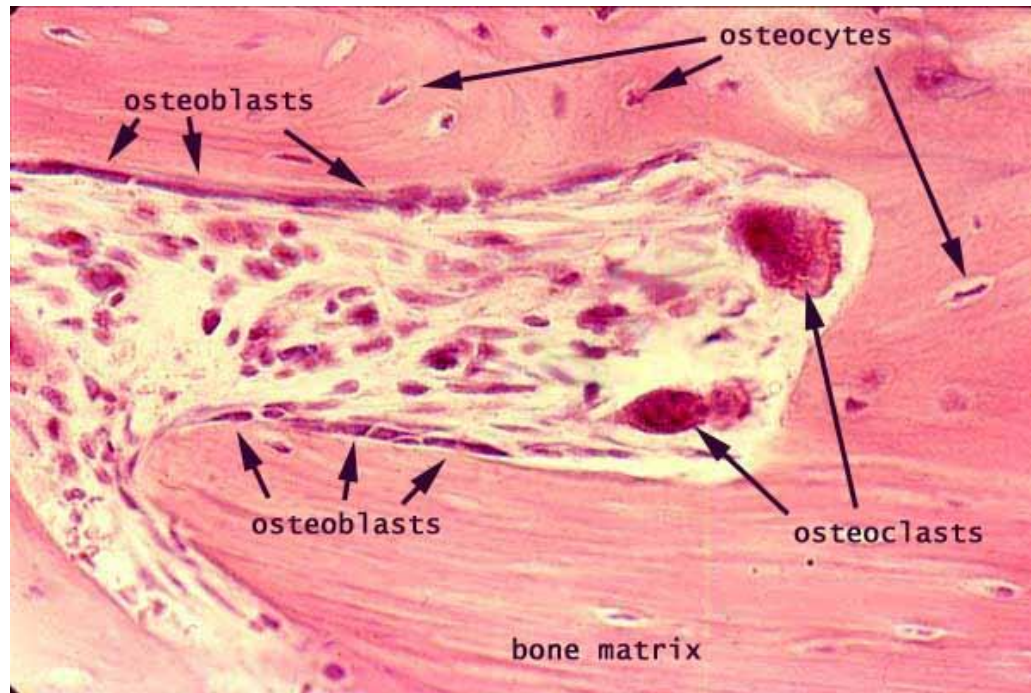
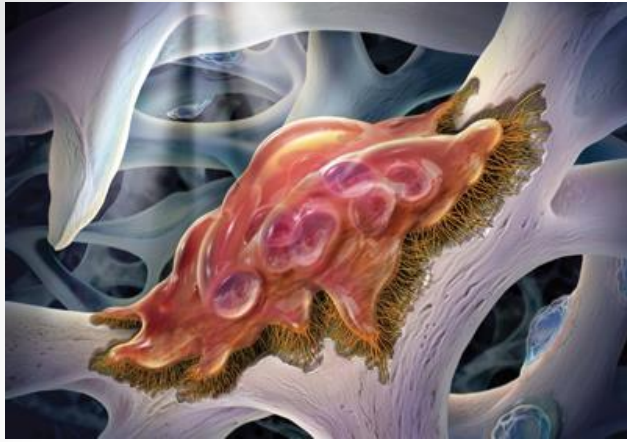
Osteocyte  
(maintains bone tissue)



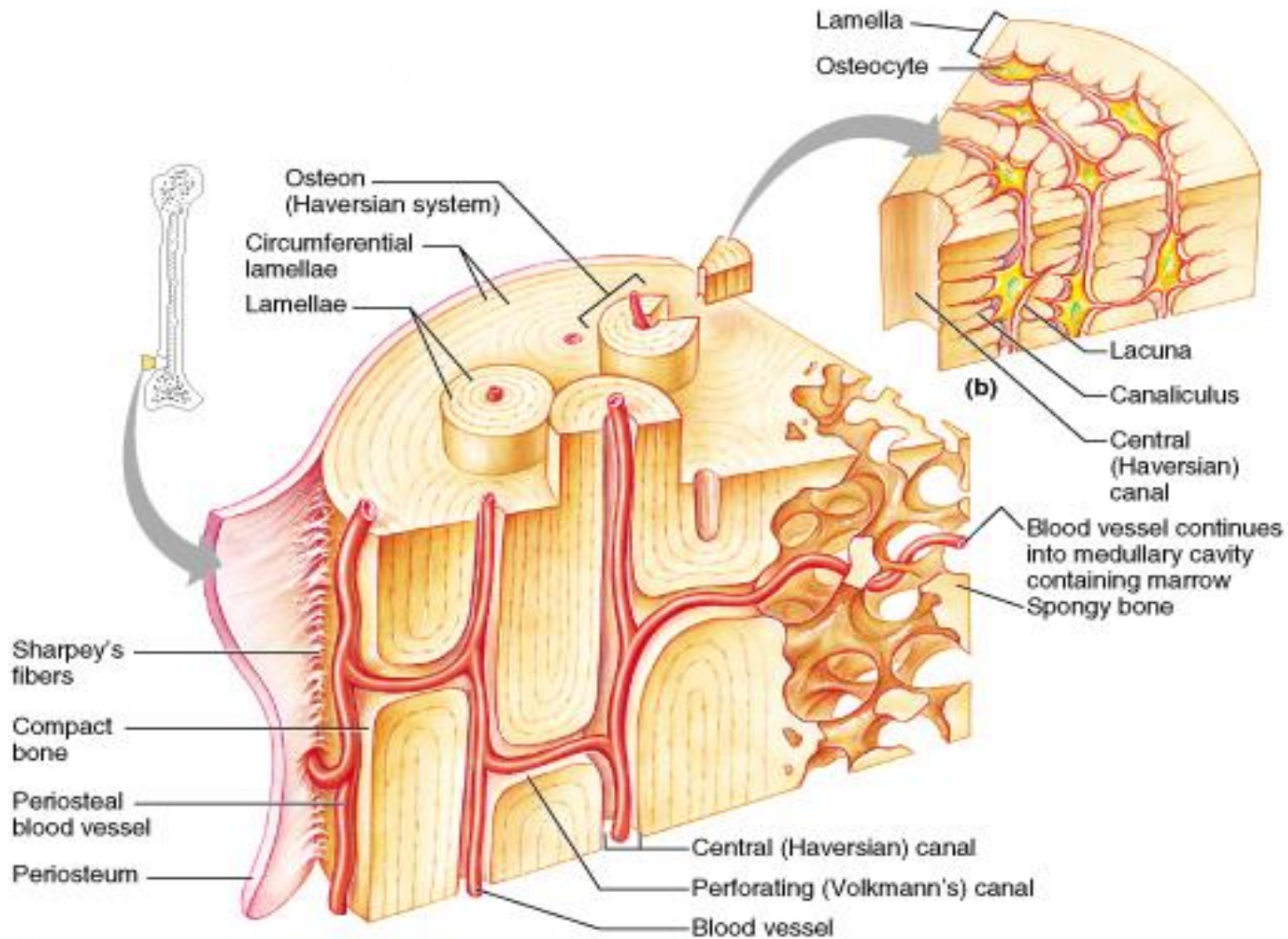
Osteoclast  
(functions in resorption, the breakdown of bone matrix)









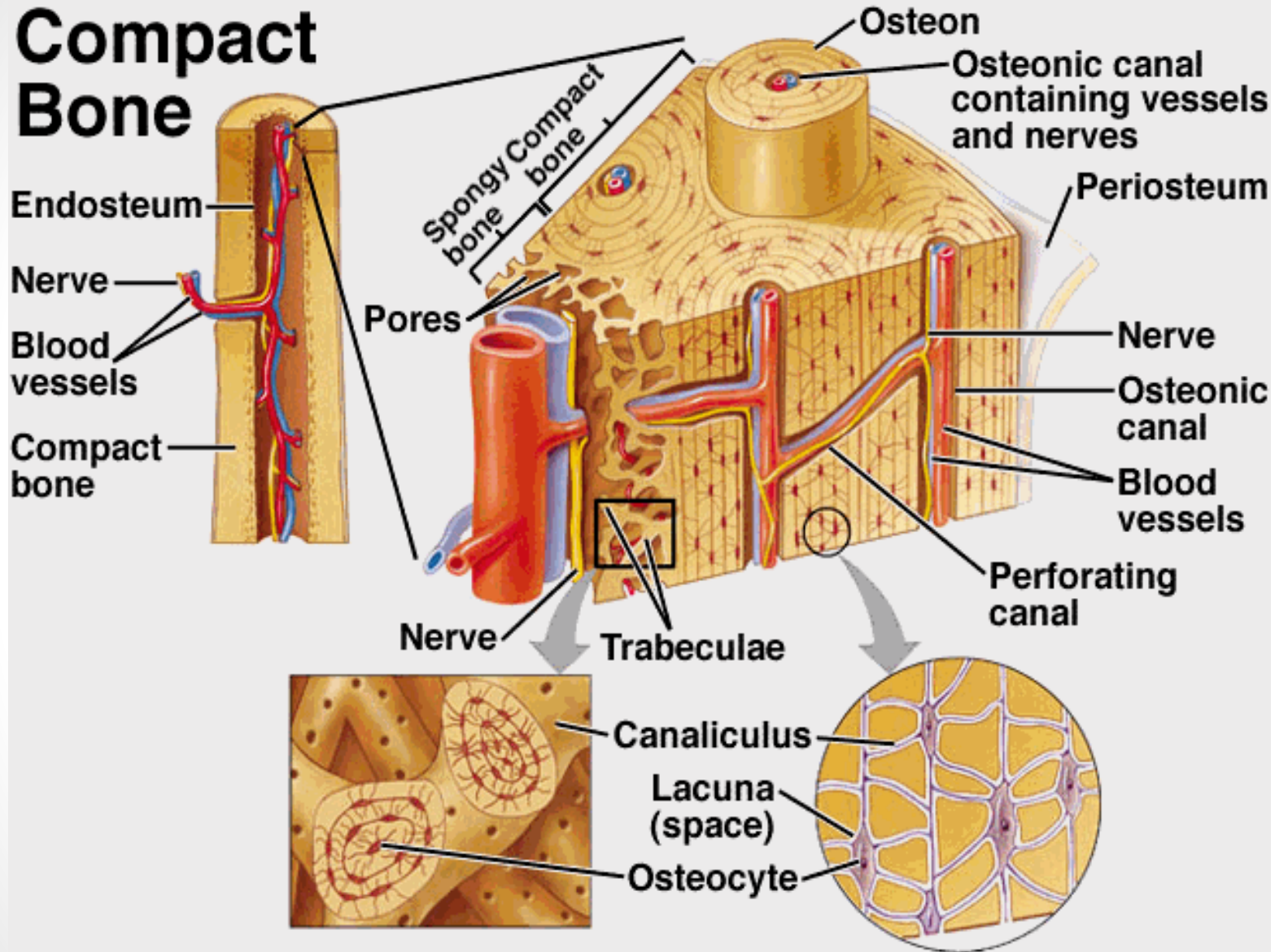


**(a)**

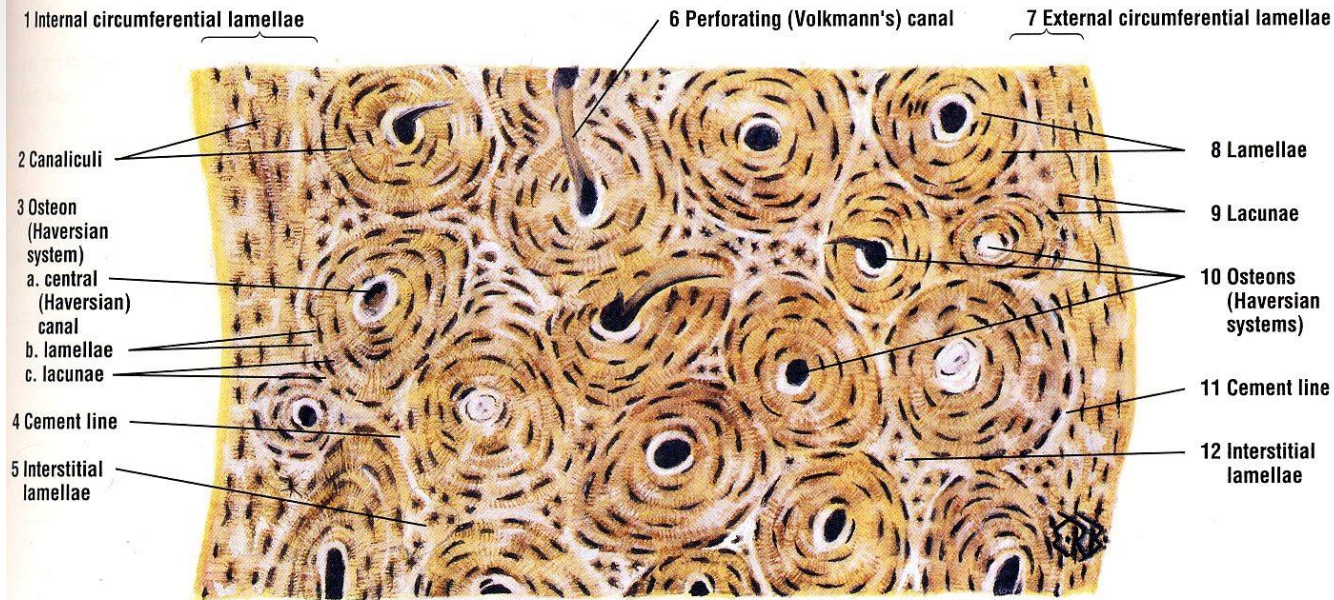
Copyright © 2001 Benjamin Cummings, an imprint of Addison Wesley Longman, Inc.



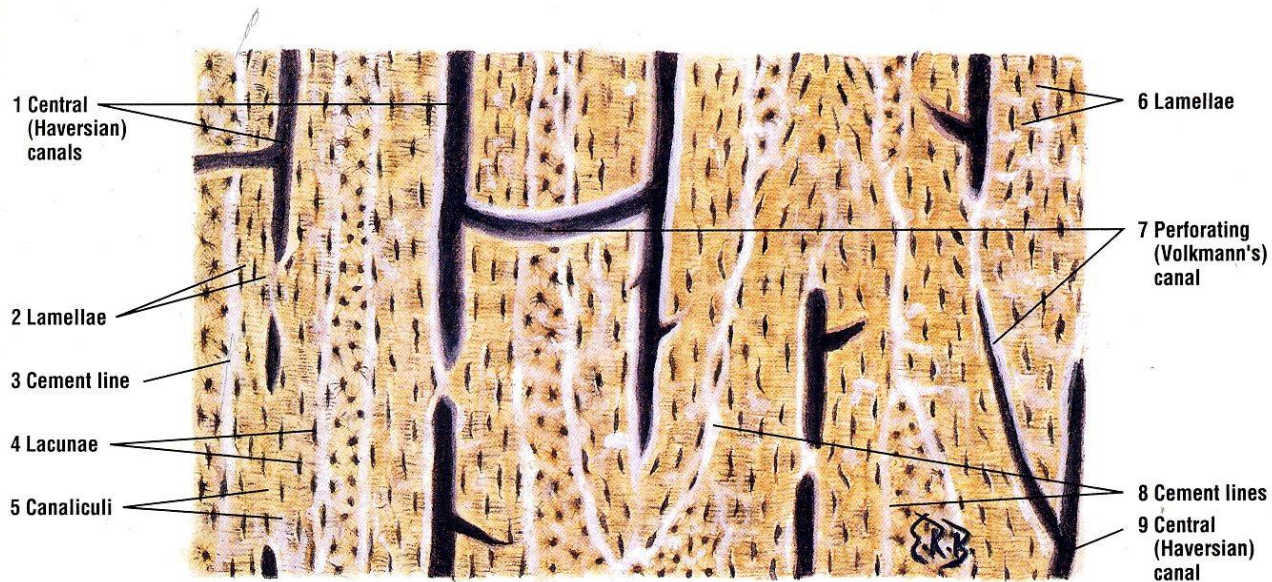
# Compact Bone





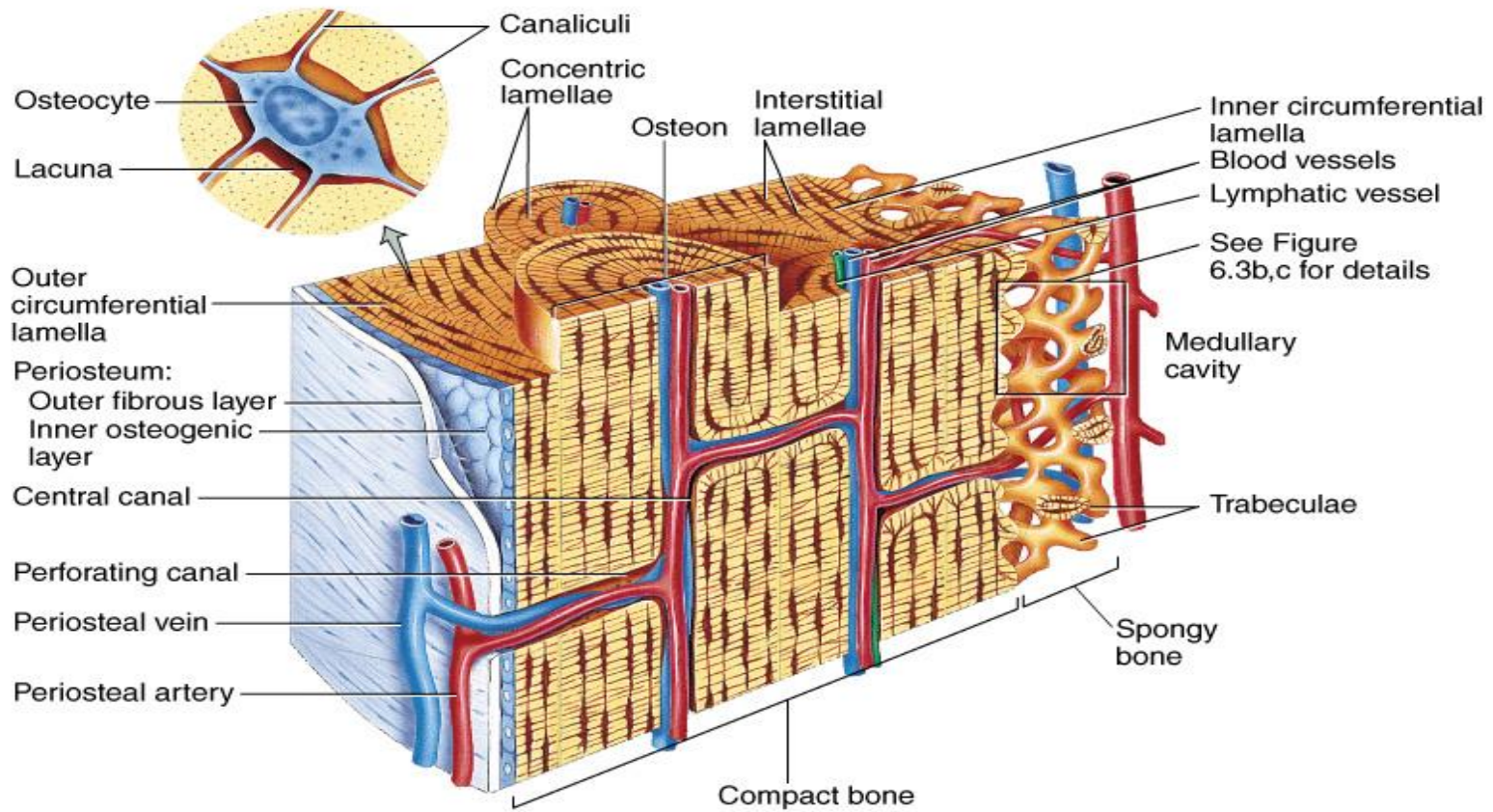


**FIGURE 4.17** ■ Compact bone, dried (transverse section). Low magnification.



**FIGURE 4.18** ■ Compact bone, dried (longitudinal section). Low magnification.





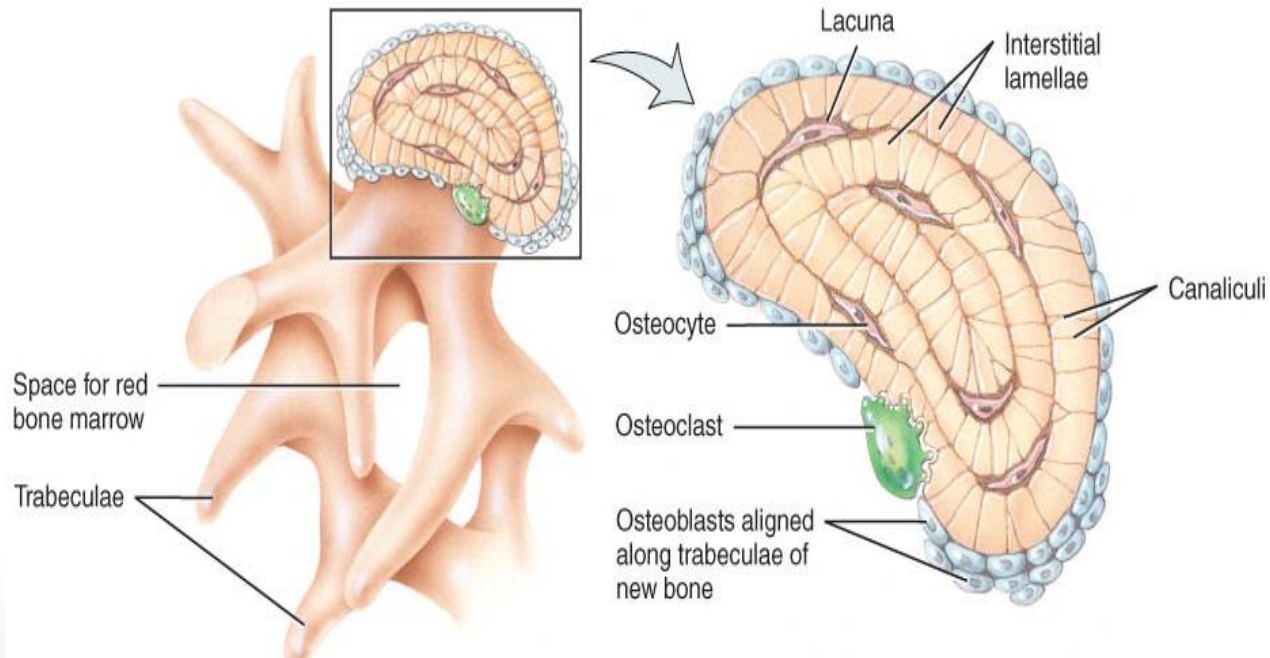
(a) Osteons (Haversian systems) in compact bone and trabeculae in spongy bone

© John Wiley & Sons, Inc.



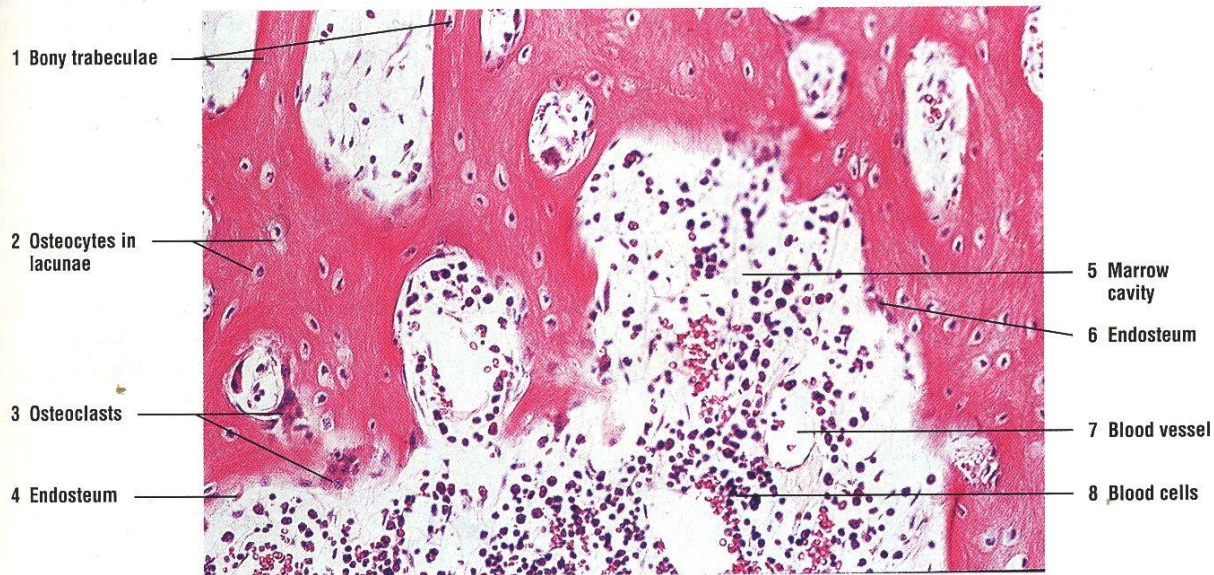
# SPONGY BONE (ANCELLOUS BONE): INTERNAL LAYER

- trabecular bone tissue (haphazard arrangement).
- filled with red and yellow bone marrow
- osteocytes get nutrients directly from circulating blood.
- short, flat and irregular bone is made up of mostly spongy bone





**FIGURE 4.15** ■ Cancellous bone with trabeculae and marrow cavities: sternum (decalcified bone, transverse section). Stain: hematoxylin and eosin. Low magnification.

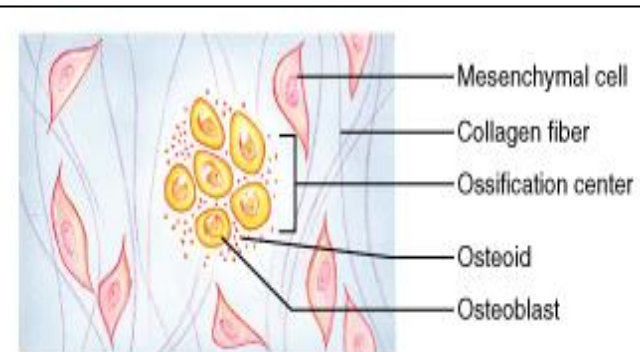


**FIGURE 4.16** ■ Cancellous bone: sternum (decalcified bone, transverse section). Stain: hematoxylin and eosin. 64×



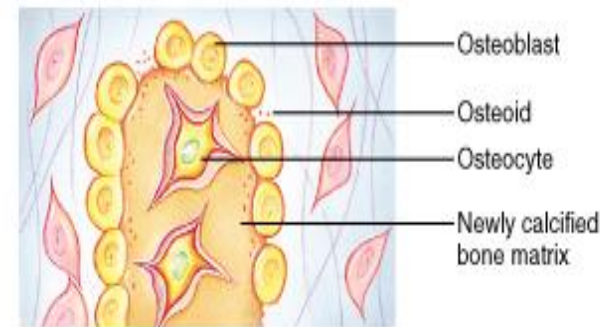
# Intramembranous Ossification

- An ossification center appears in the fibrous connective tissue membrane
- Osteoblasts secrete bone matrix within the fibrous membrane
- Osteoblasts mature into osteocytes



① **An ossification center appears in the fibrous connective tissue membrane.**

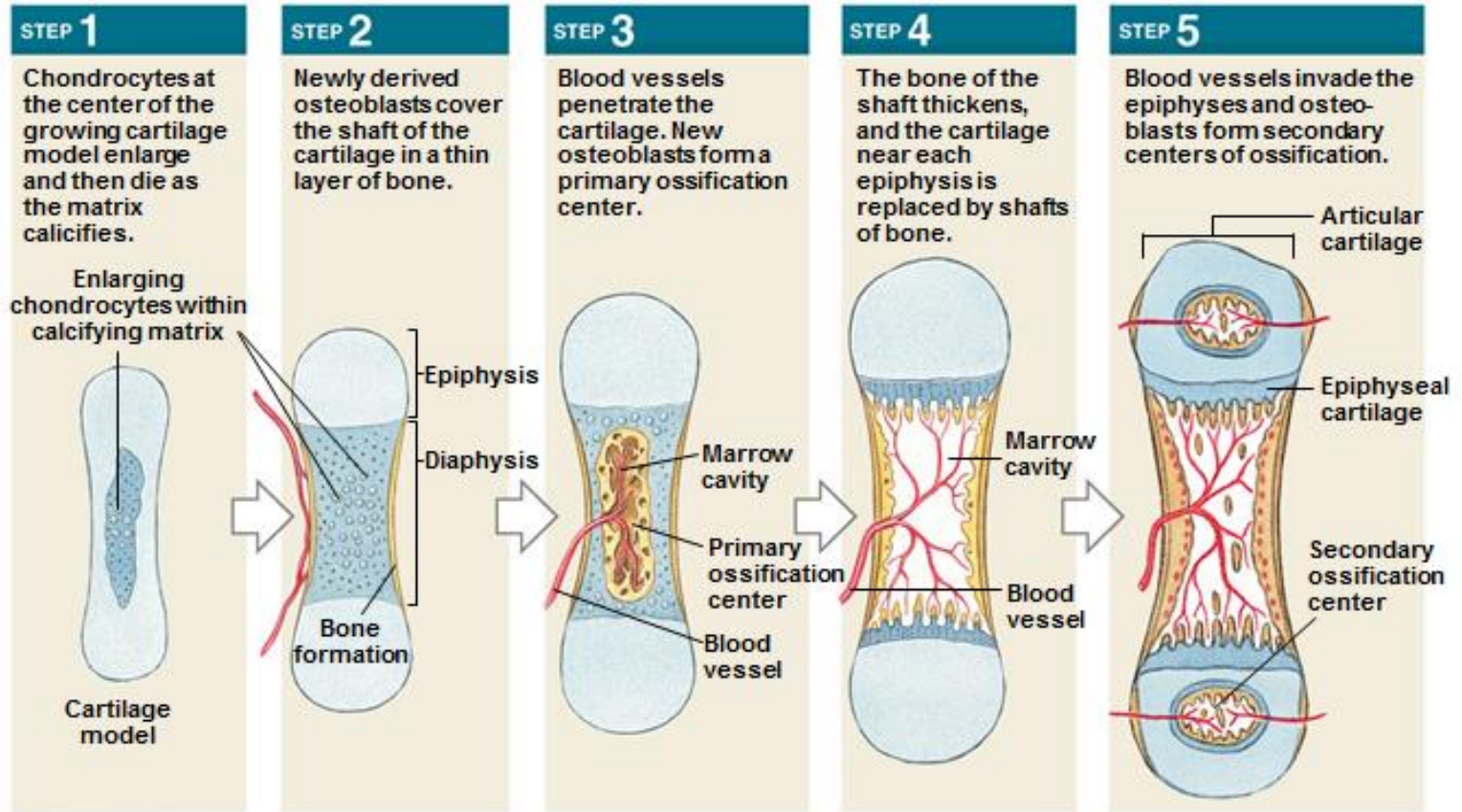
- Selected centrally located mesenchymal cells cluster and differentiate into osteoblasts, forming an ossification center.



② **Bone matrix (osteoid) is secreted within the fibrous membrane.**

- Osteoblasts begin to secrete osteoid, which is mineralized within a few days.
- Trapped osteoblasts become osteocytes.

# Endochondral Ossification



Replacement of hyaline cartilage with bone  
Most bones are formed this way (i.e. long bones).



