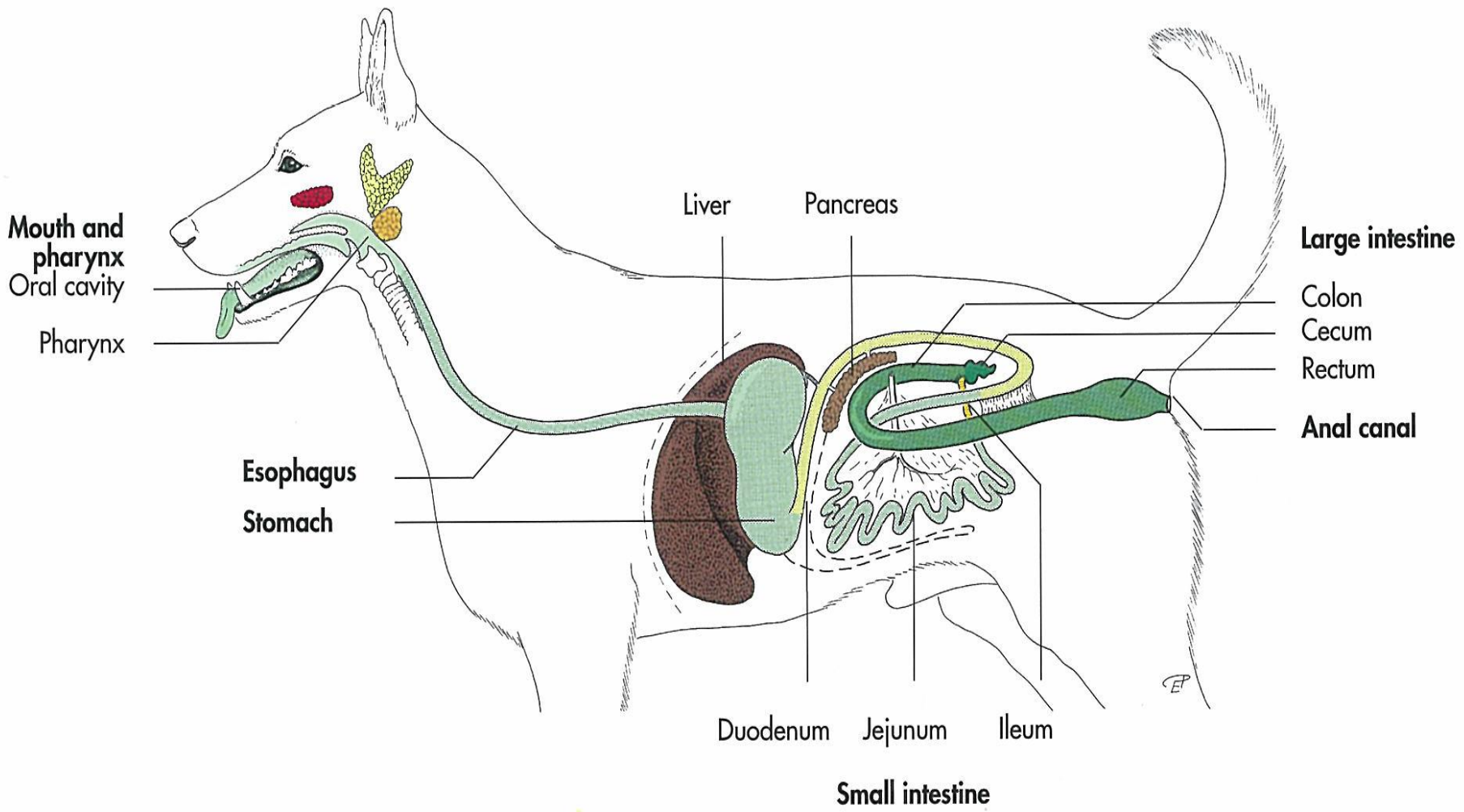


# Digestive system

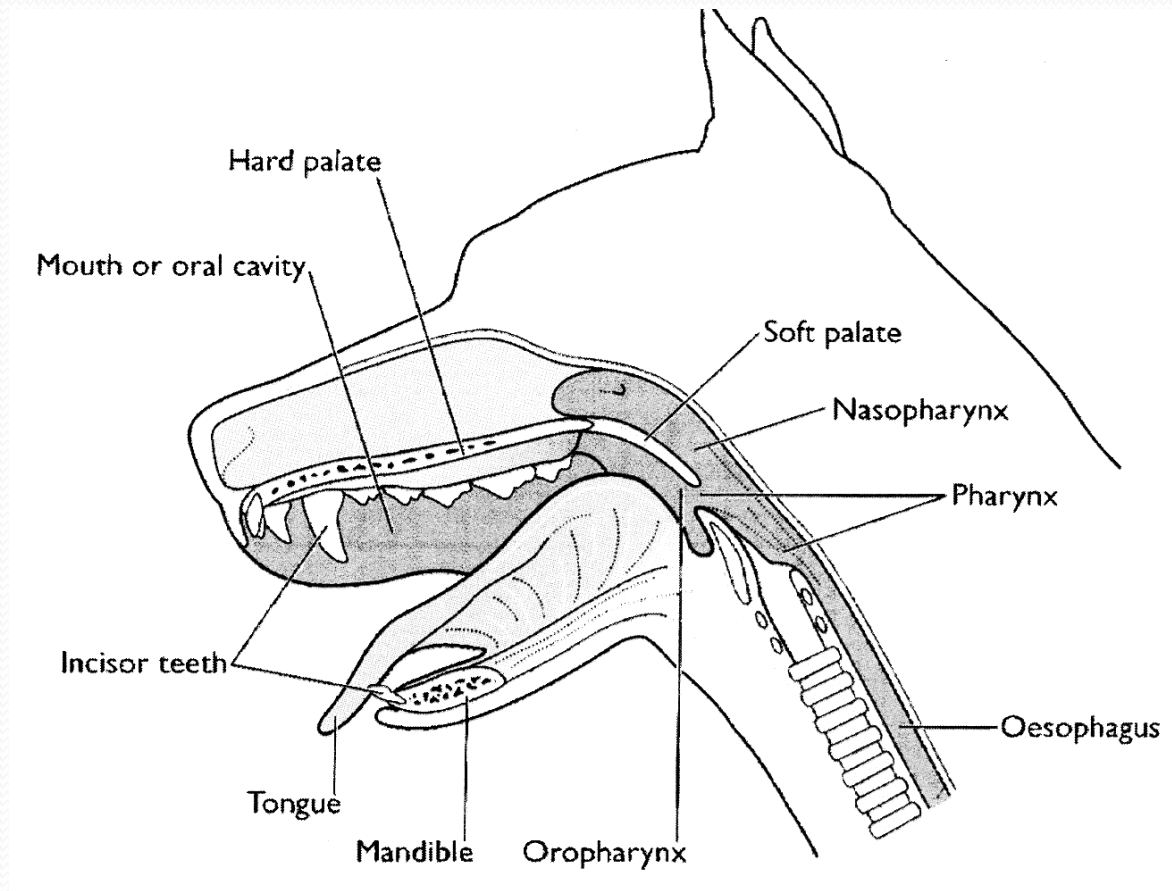
# دستگاه گوارش

Reception – Digestion – Absorbtion -Expulsion.

- *Organs:*
- *1.Mouth*
- *2.Pharynx*
- *3.Alimentary canal : esophagus – stomach-intestines*
- *4.Accessory (associated ) organs : (pancreas – liver)*



# Mouth





## Oral cavity in horse



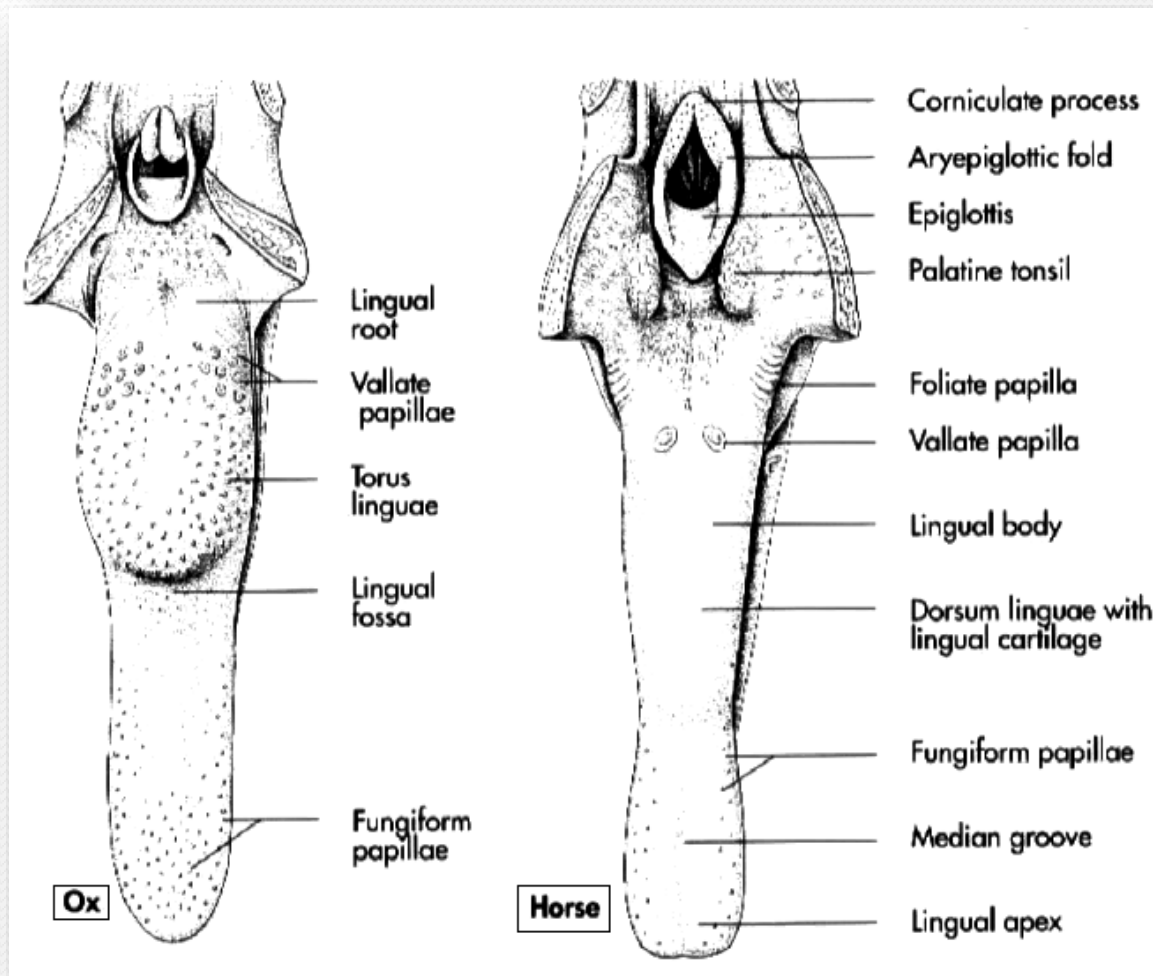
**Oral cavity in dog**

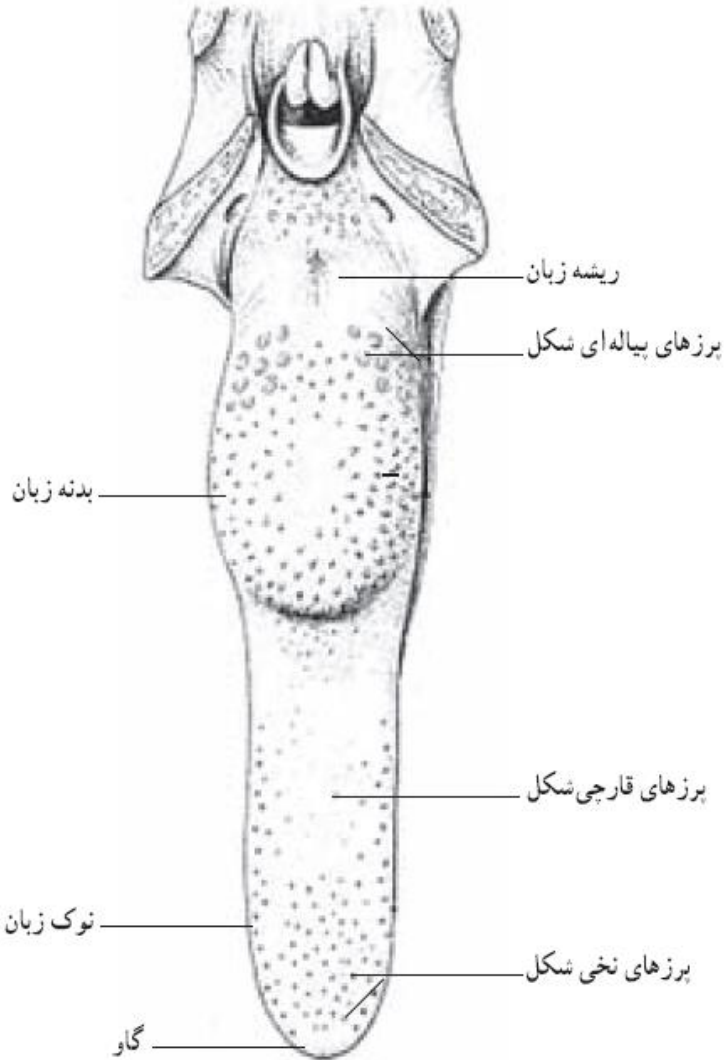


**Oral cavity in camel**

# Tongue

زبان

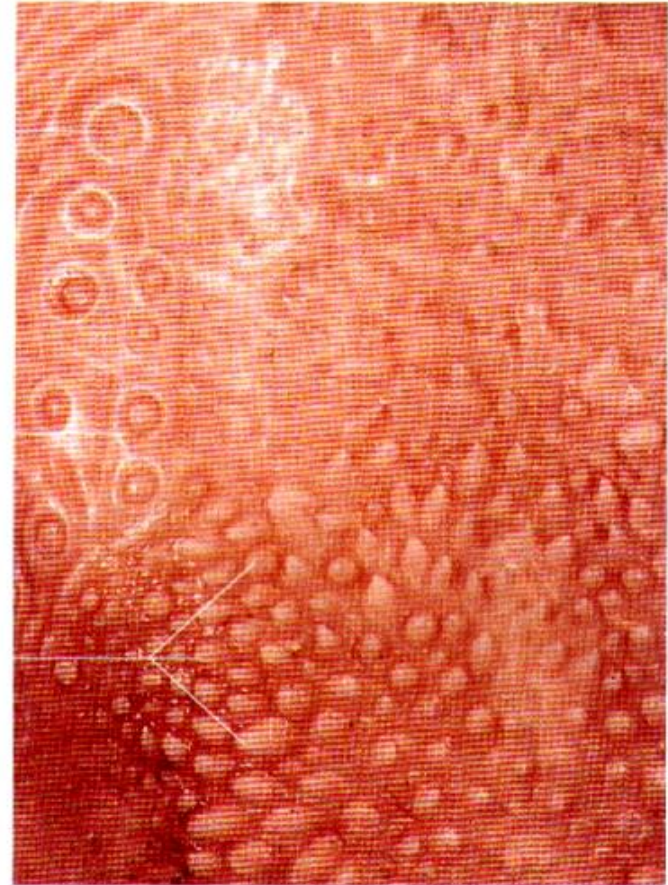




Vallate papilla

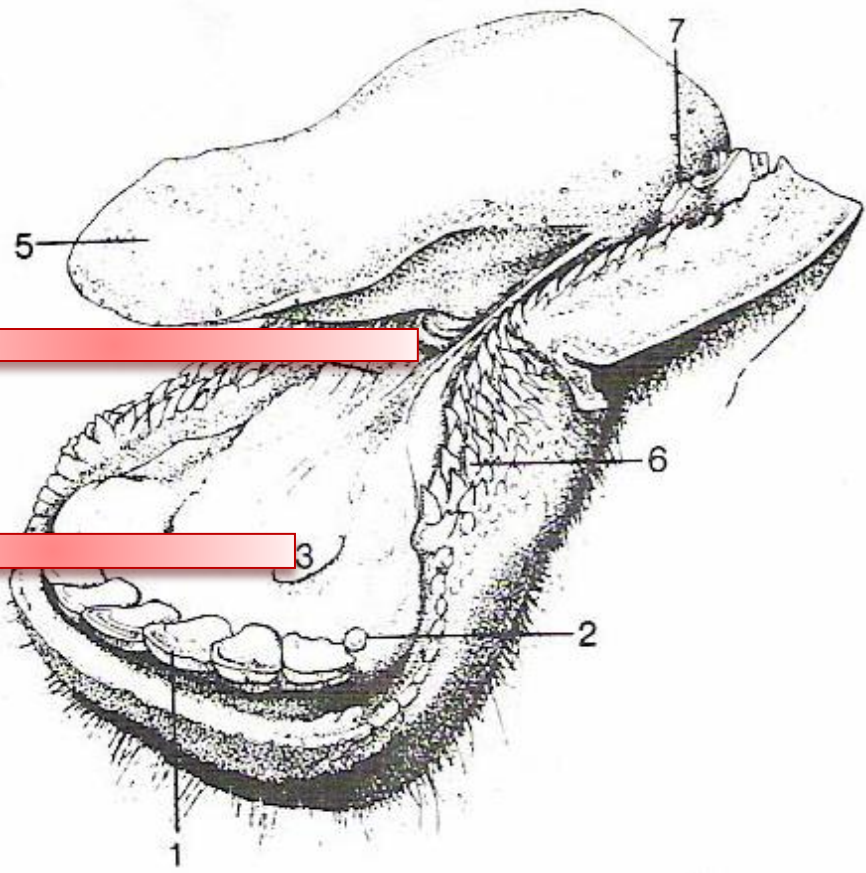
Vallate papilla

Conical papillae



Papillae at the base of the tongue in an ox.





**Frenulum linguae**  
ترمز زبان



**Sublingual caruncle**  
کارونکل



Floor of the mouth and tongue.

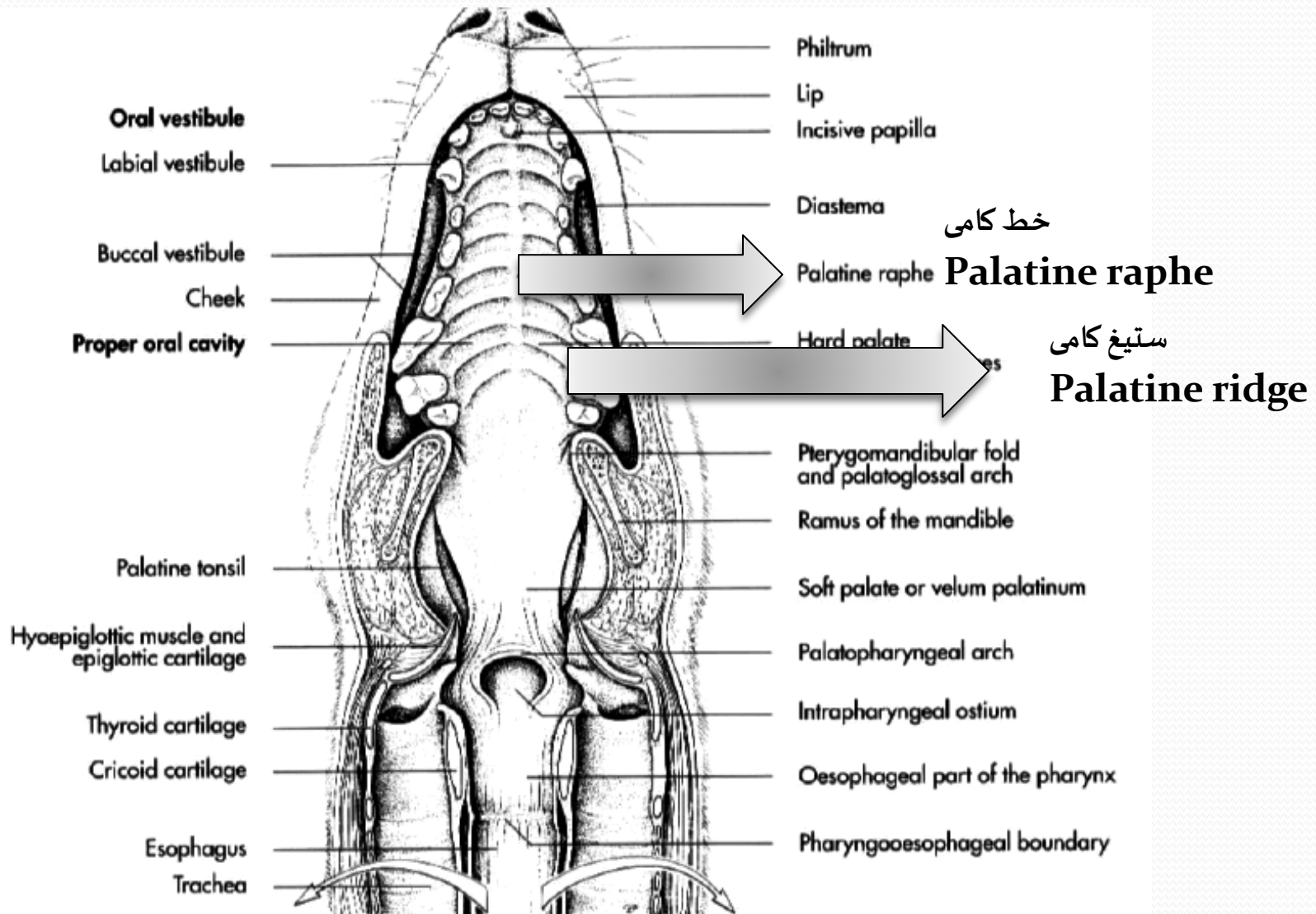
1, Central incisor; 2, remnant of worn fourth deciduous incisor ( $i_4$ ); 3, sublingual caruncle; 4, frenulum; 5, apex of tongue; 6, buccal papillae; 7, first cheek tooth ( $P_2$ ).

# Lingual papilla

## پرزهای زبانی

پرزها ( Papillae ):

- نخ ( Filiform ) : شبیه نخ، جلوی گودی زبان، رو به عقب، عمل مکانیکی
  - قارچی ( Fungiform ) : بیشتر در امتداد لبه های راس زبان، عمل چشایی
  - مخروطی ( Conical ) : روی برجستگی پشتی زبان، عمل مکانیکی
  - عدسی ( Lenticular ) : روی برجستگی پشتی زبان، عمل مکانیکی
  - جامی ( Vallate ) : در هر طرف ۱۷ – ۸ عدد در انتهای Torus ، عمل چشایی
- برگی : فقط گوشتخواران و تک سمیان / عمل چشایی



Oral vestibule

Labial vestibule

Buccal vestibule

Cheek

Proper oral cavity

Palatine tonsil

Hyoepiglottic muscle and epiglottic cartilage

Thyroid cartilage

Cricoid cartilage

Esophagus

Trachea

Philtrum

Lip

Incisive papilla

Diastema

Palatine raphe

Hard palate

Pterygomandibular fold and palatoglossal arch

Ramus of the mandible

Soft palate or velum palatinum

Palatopharyngeal arch

Intraparyngeal ostium

Oesophageal part of the pharynx

Pharyngooesophageal boundary

خط کامی

Palatine raphe

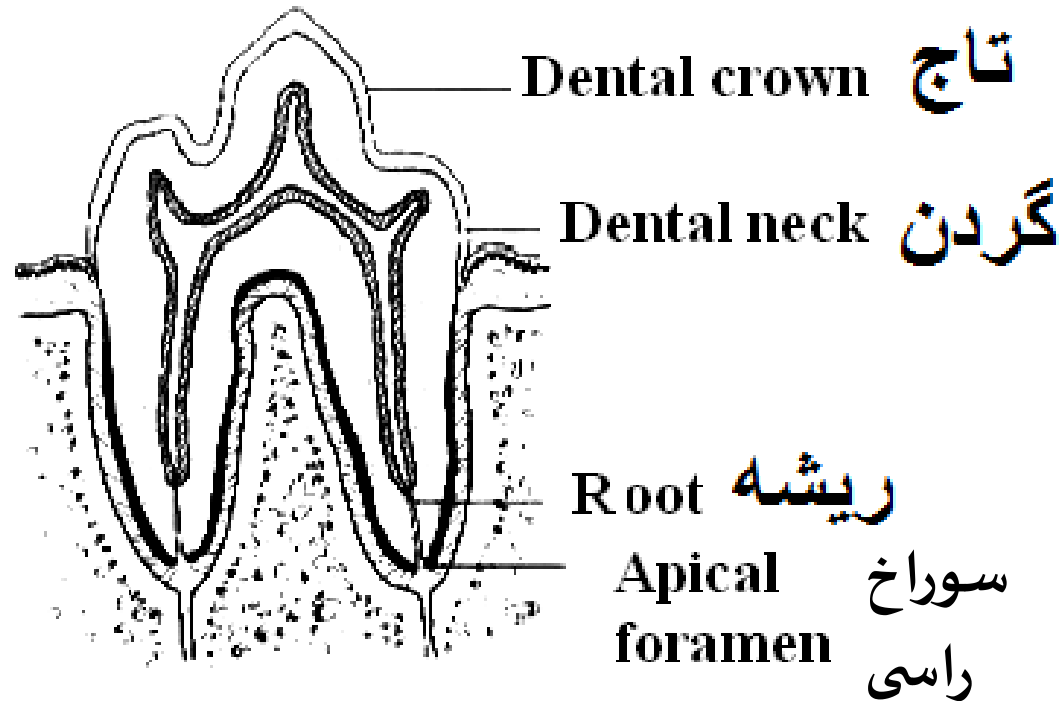
ستیغ کامی

Palatine ridge

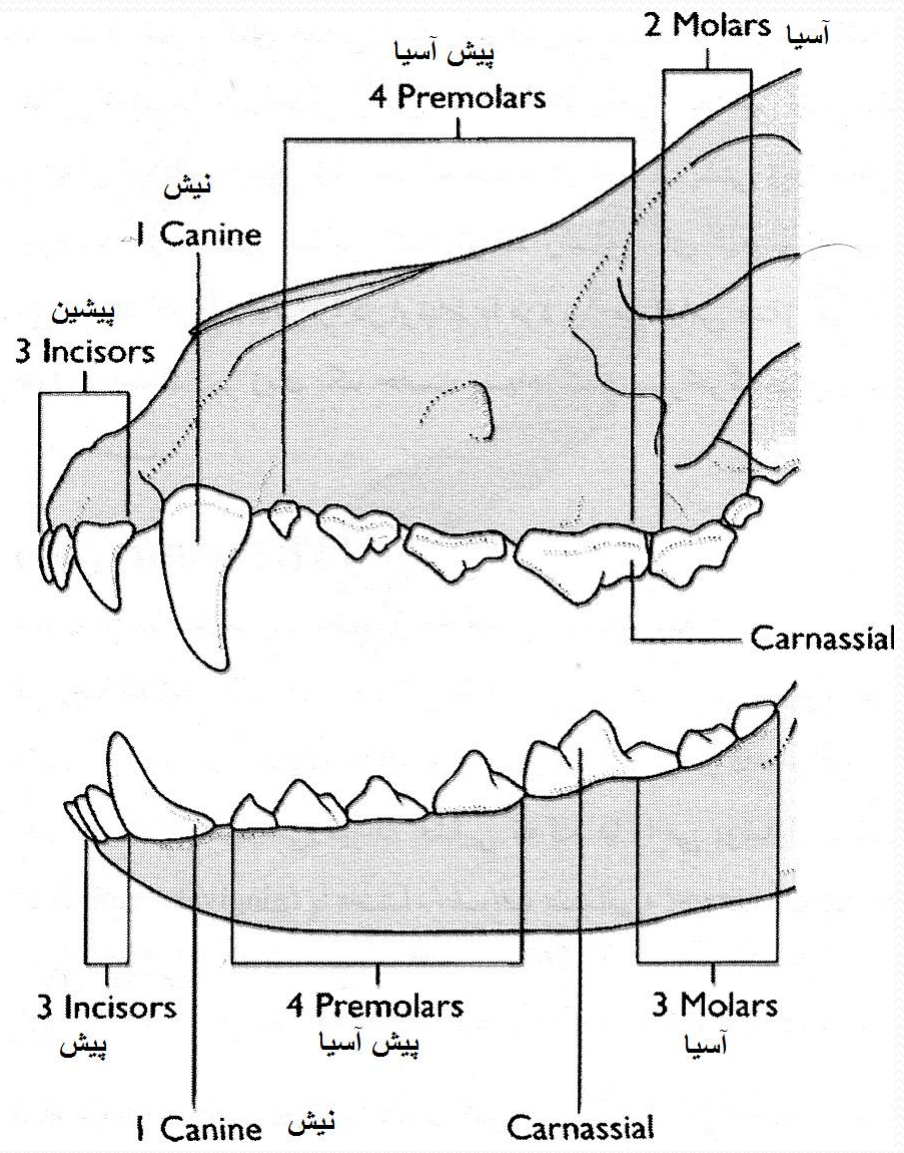
سقف دهان درسگ

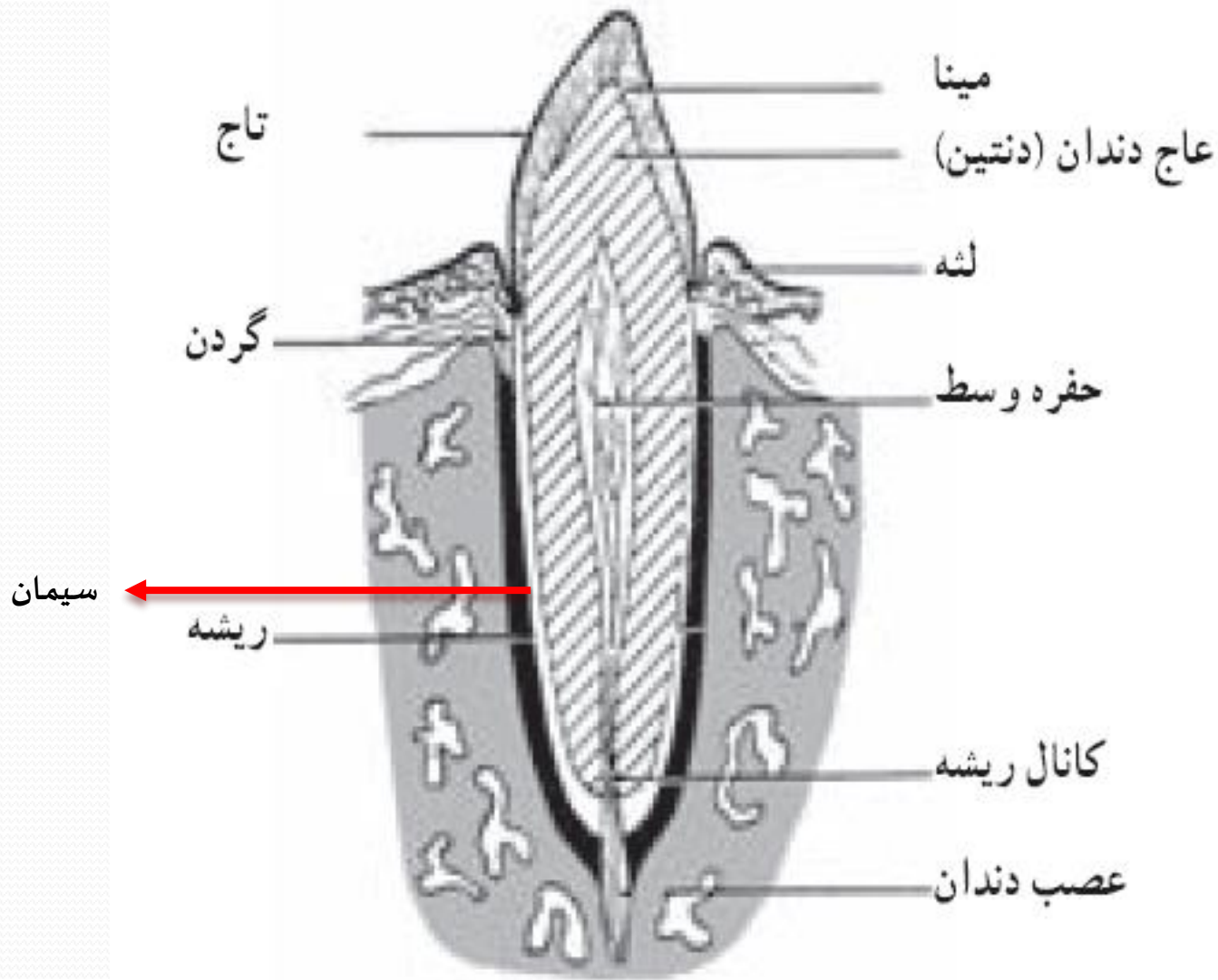
# Teeth

# دندان ها








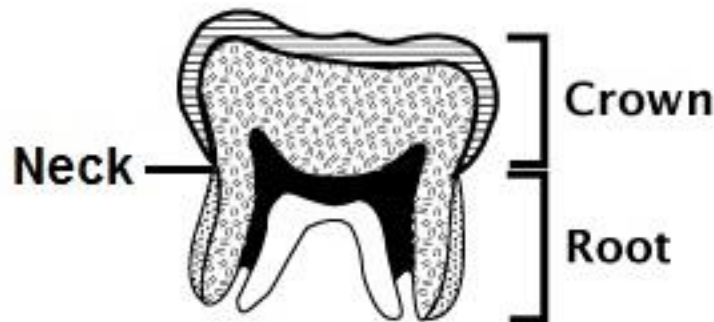
Canine M1





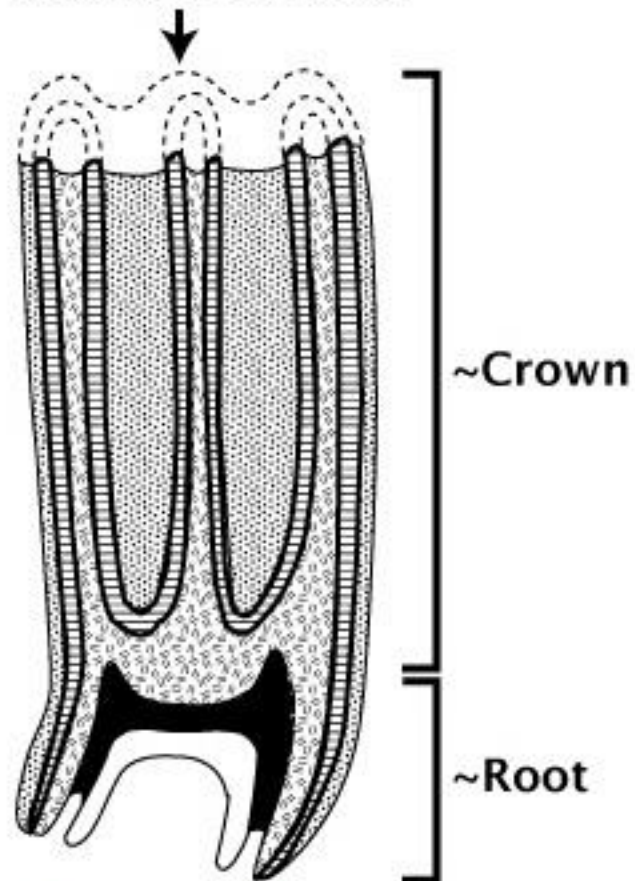
© Strömberg (2006)

-  Pulp cavity
-  Bone
-  Enamel
-  Dentine
-  Cementum

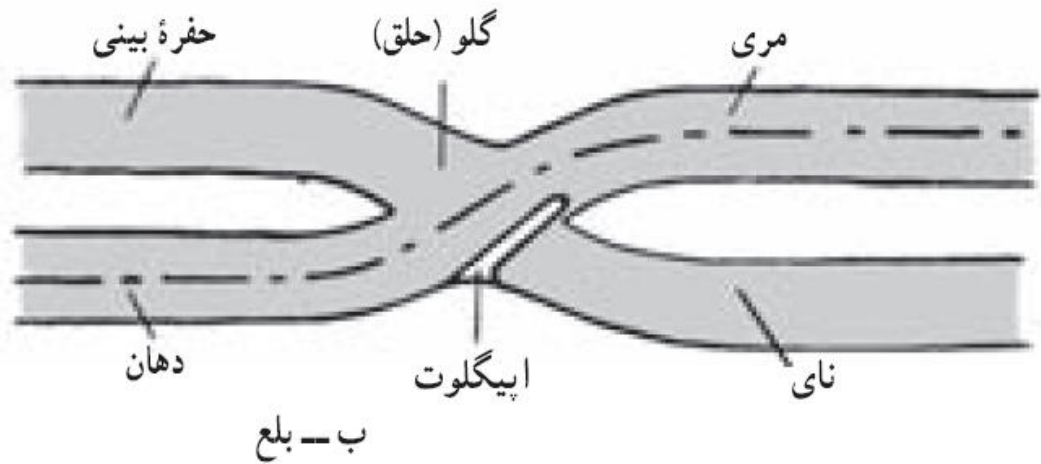
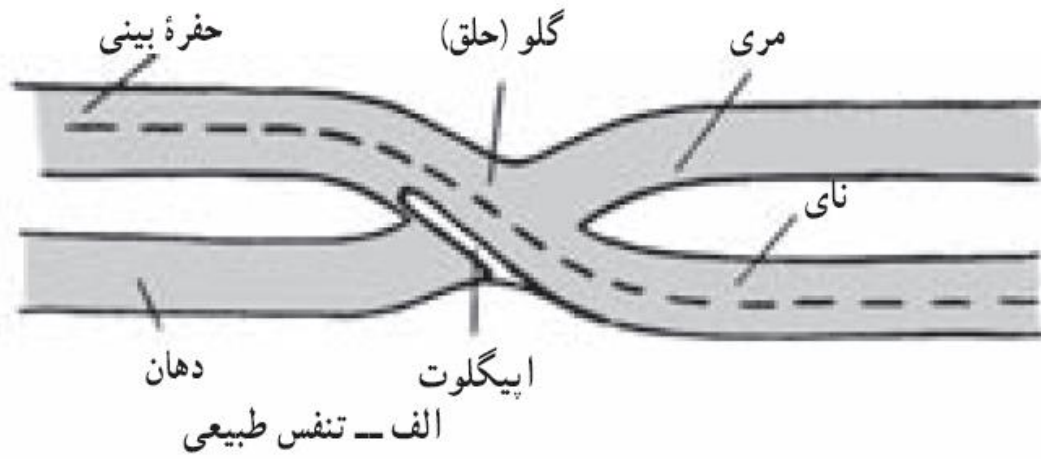


**Brachydont**

Occlusal surface



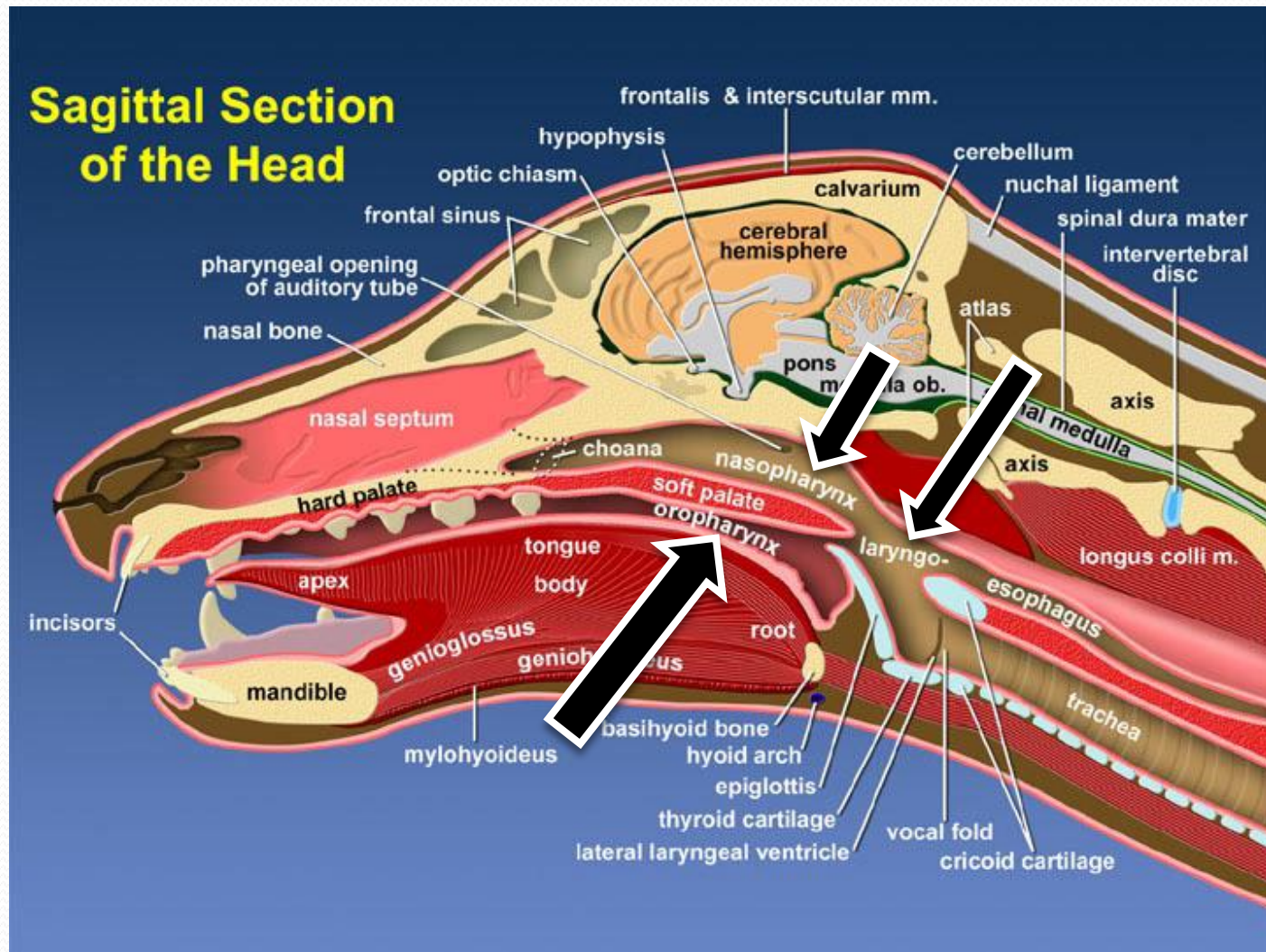
**Hypsodont**

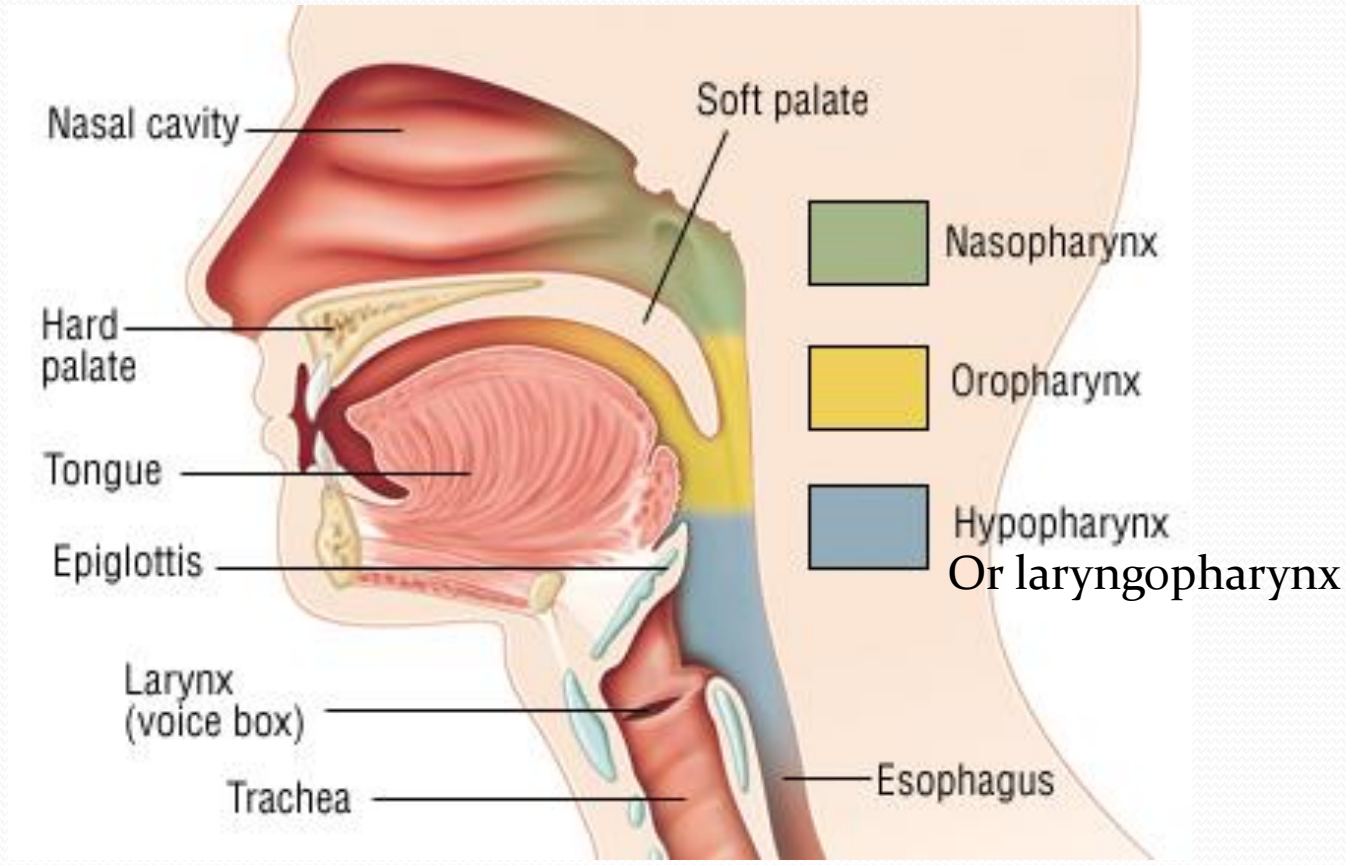




# Pharynx

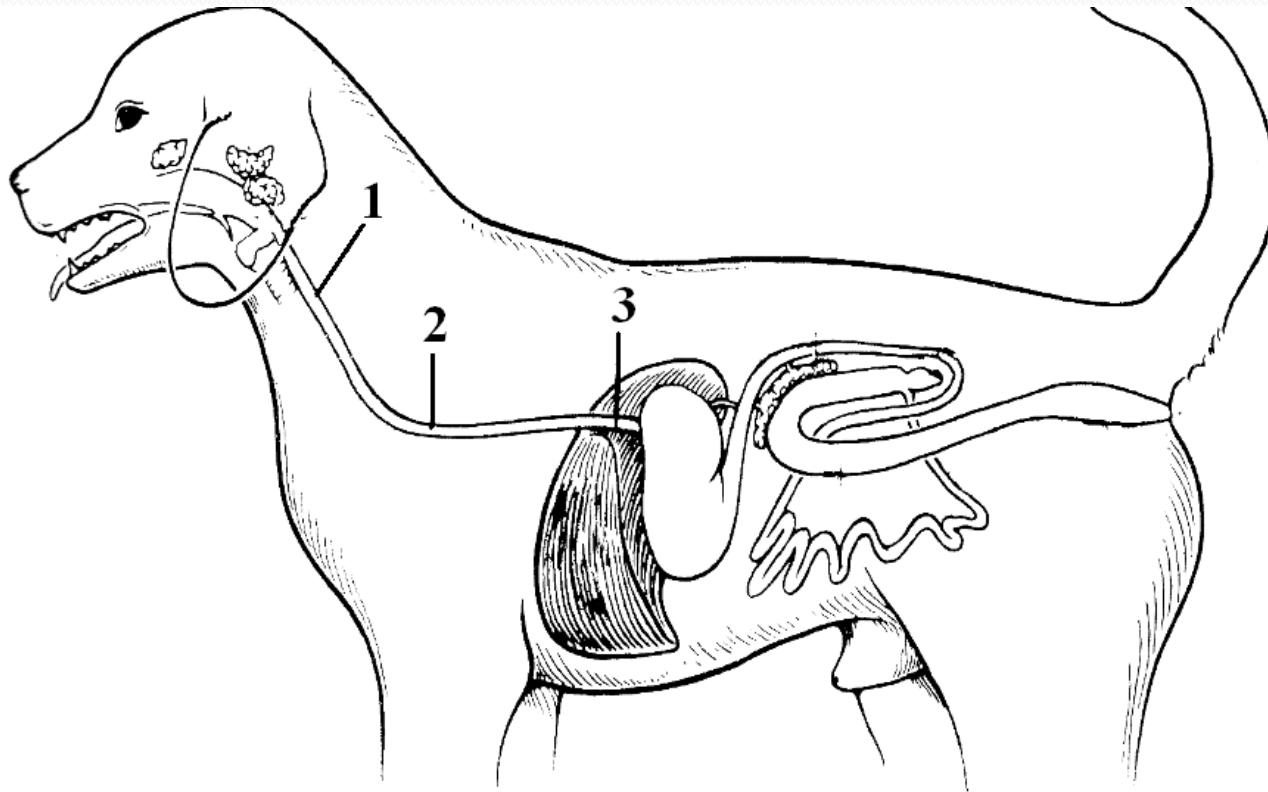
حلق





# Esophagus

میری



1)Cervical part 2)Thoracic part 3)Abdominal part

# Stomach

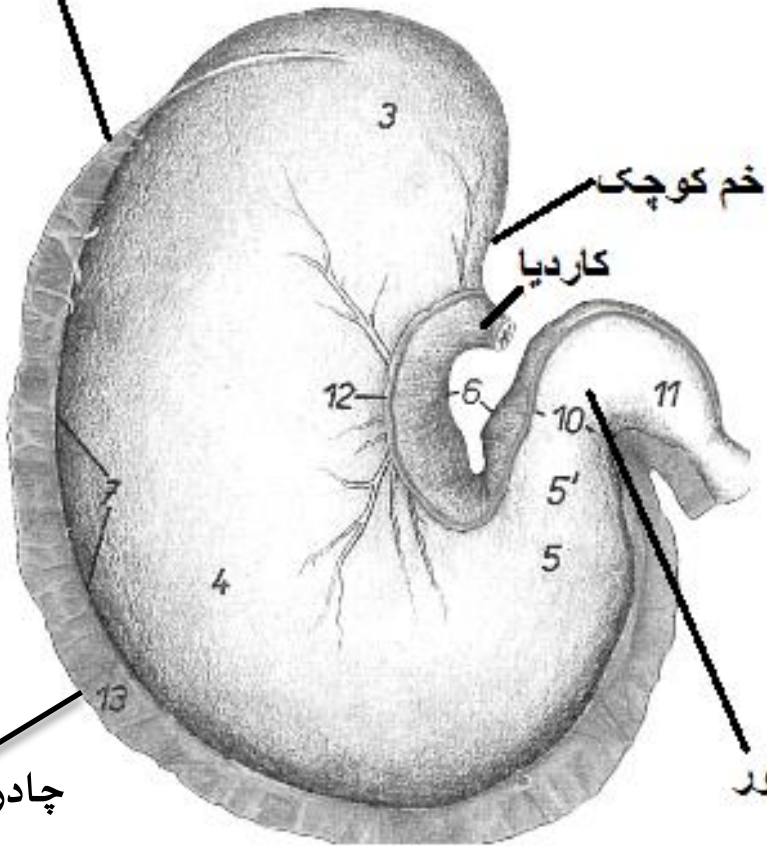
## معدده

انواع معدده :

ساده : گوشتخواران و تک سمیان

مرکب : نشخوارکنندگان

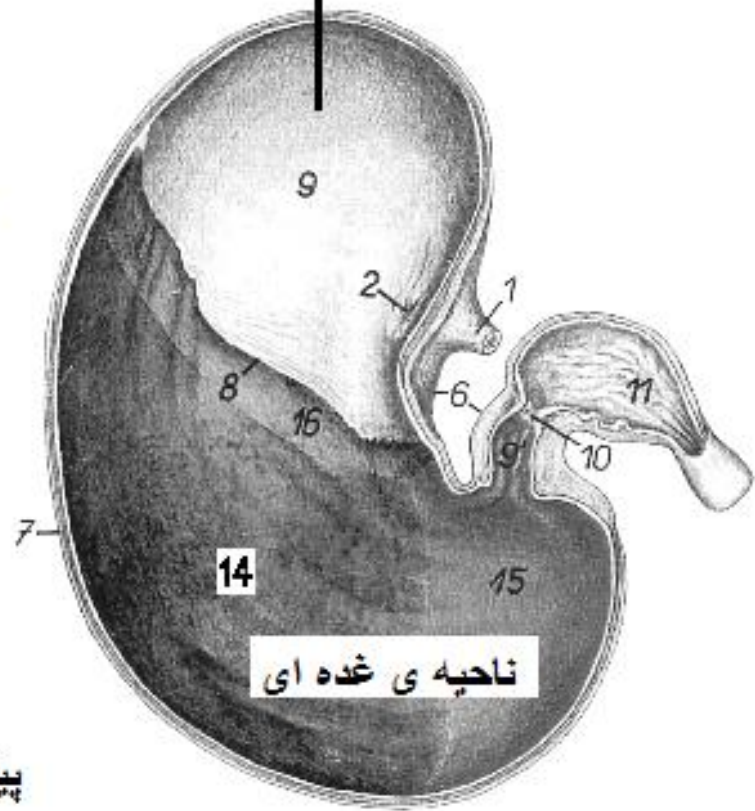
خم بزرگ



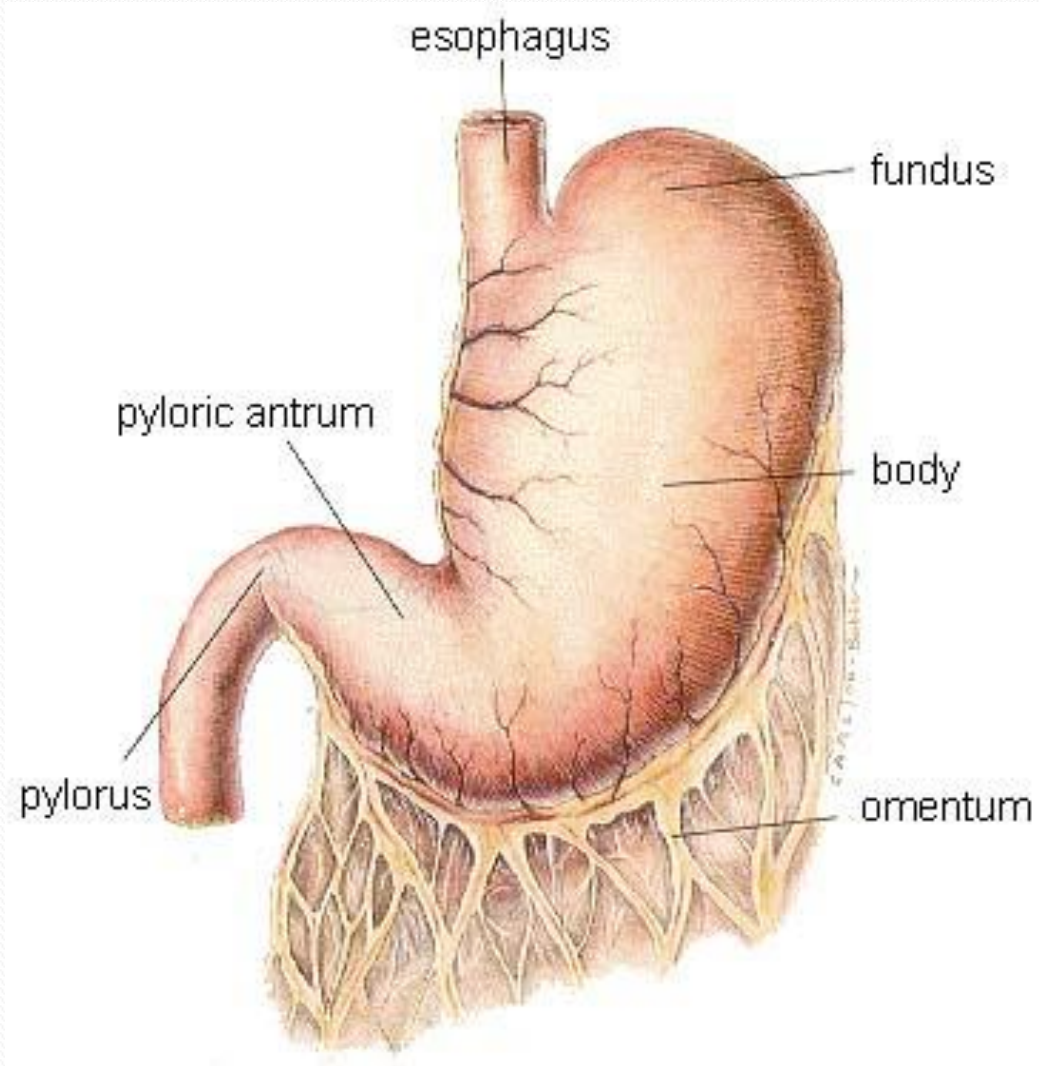
چادرینه بزرگ

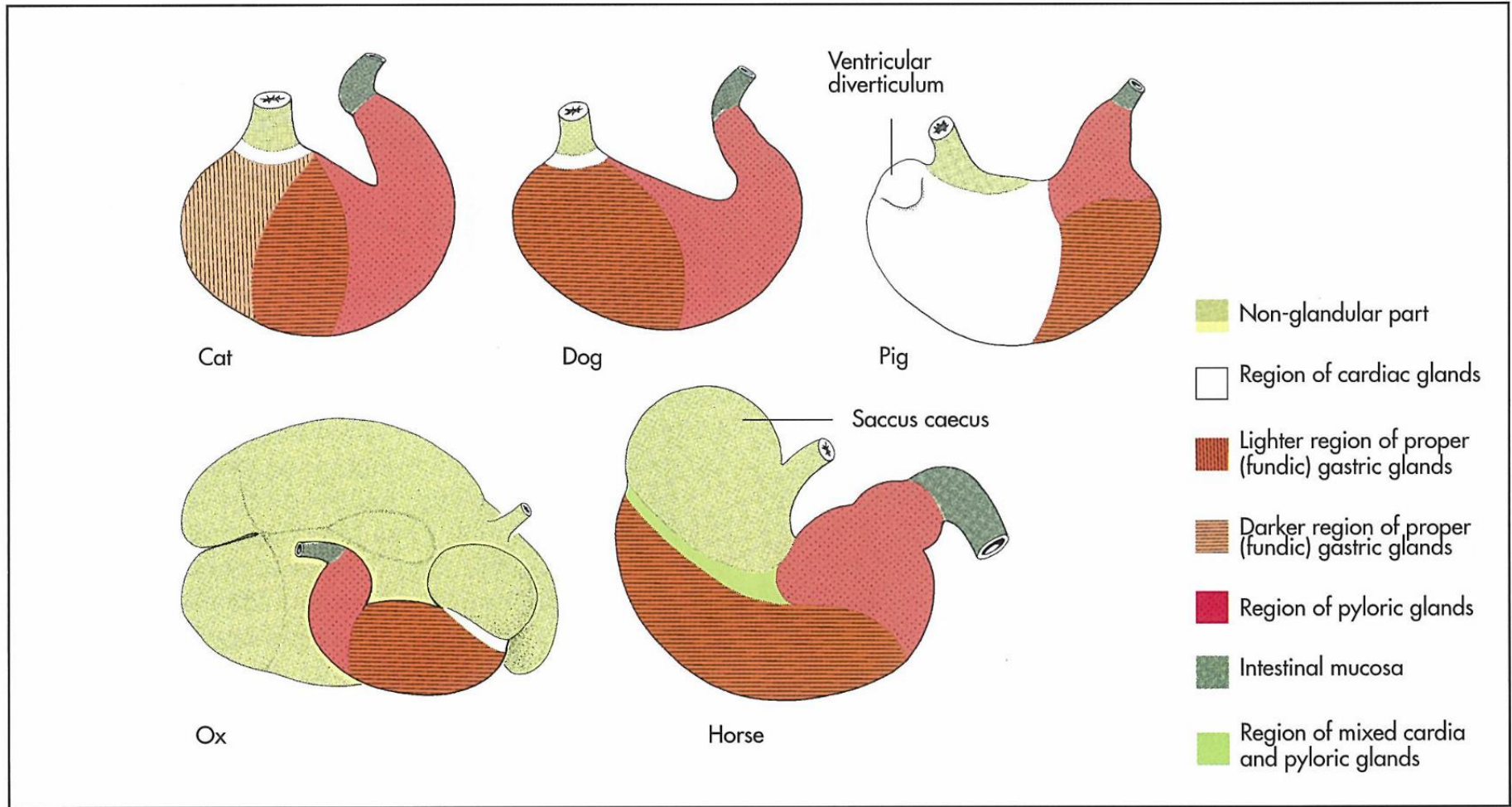
پیلور

ناحیه ی غیر غده ای

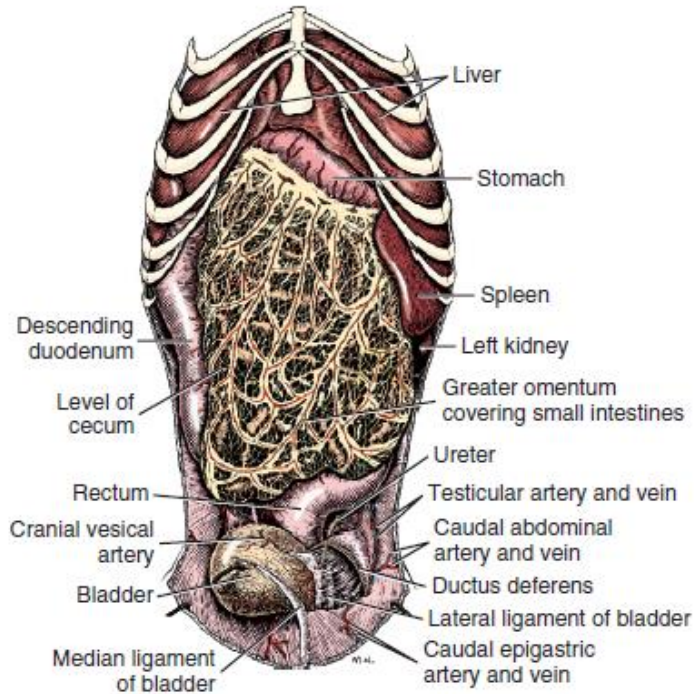


ناحیه ی غده ای

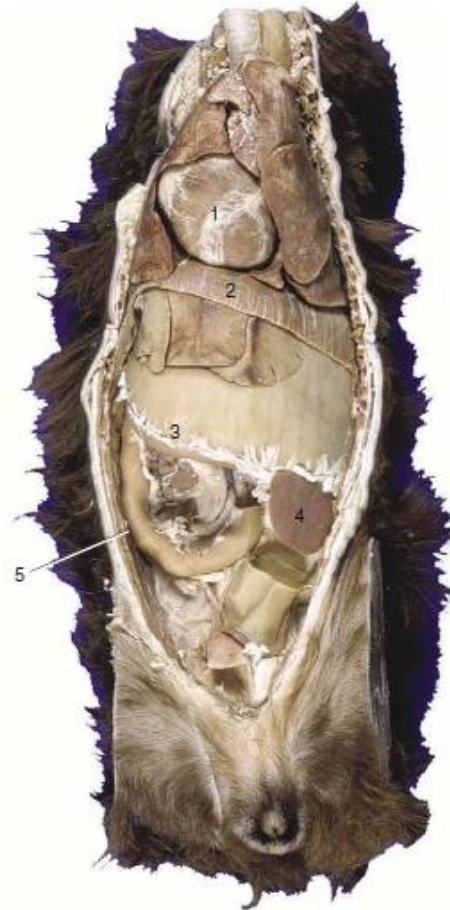




**Fig 7-49.** Distribution of the gastric mucosa in the domestic mammals, schematic (Liebich, 2004).



**FIGURE 7-33** Abdominal viscera of male dog, ventral aspect.



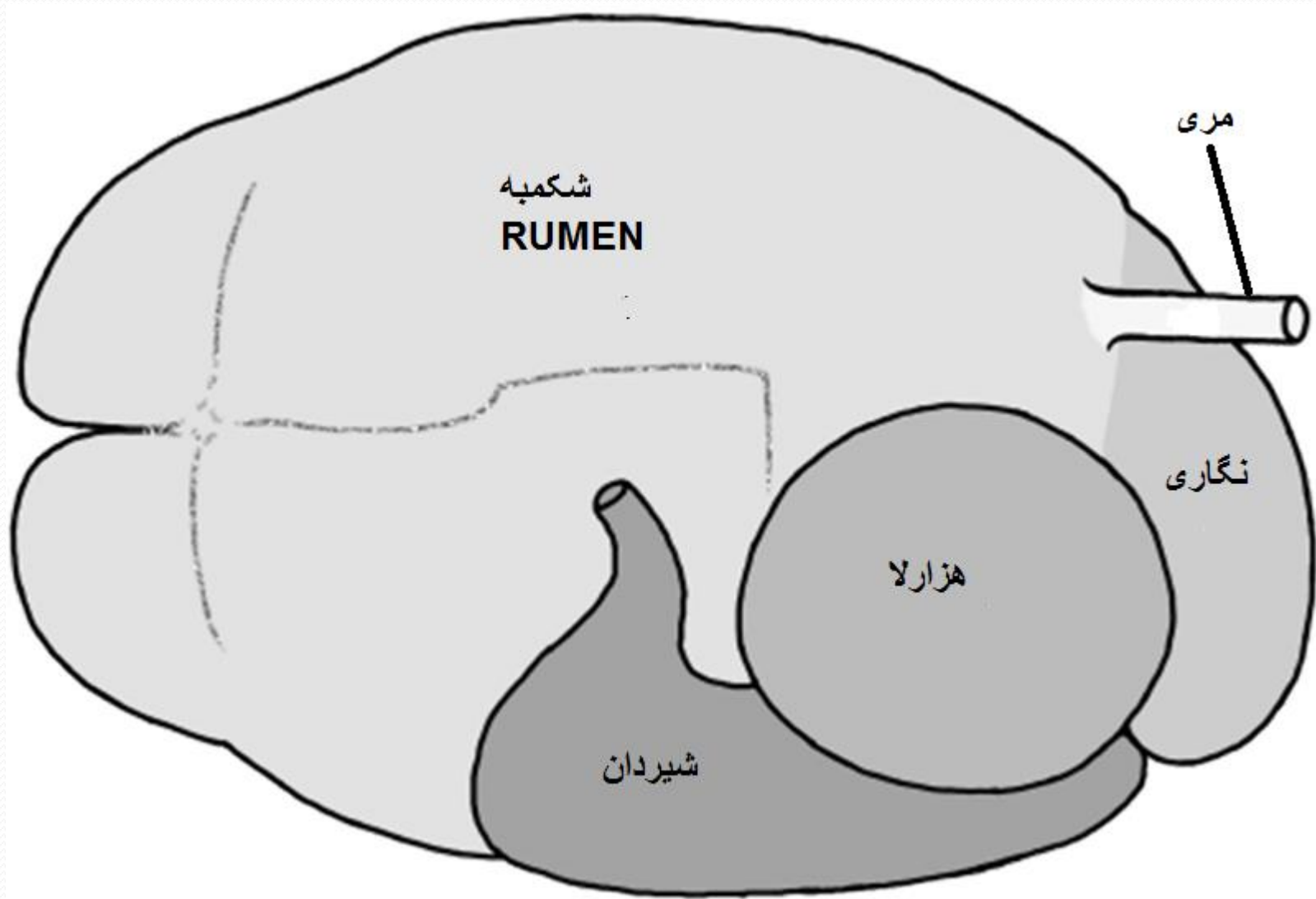
**Figure 14-1** Ventral view of a canine trunk, demonstrating the so-called intrathoracic part of the abdomen. 1, Heart; 2, diaphragm; 3, distended stomach (with attachment of greater omentum); 4, spleen; 5, duodenum.

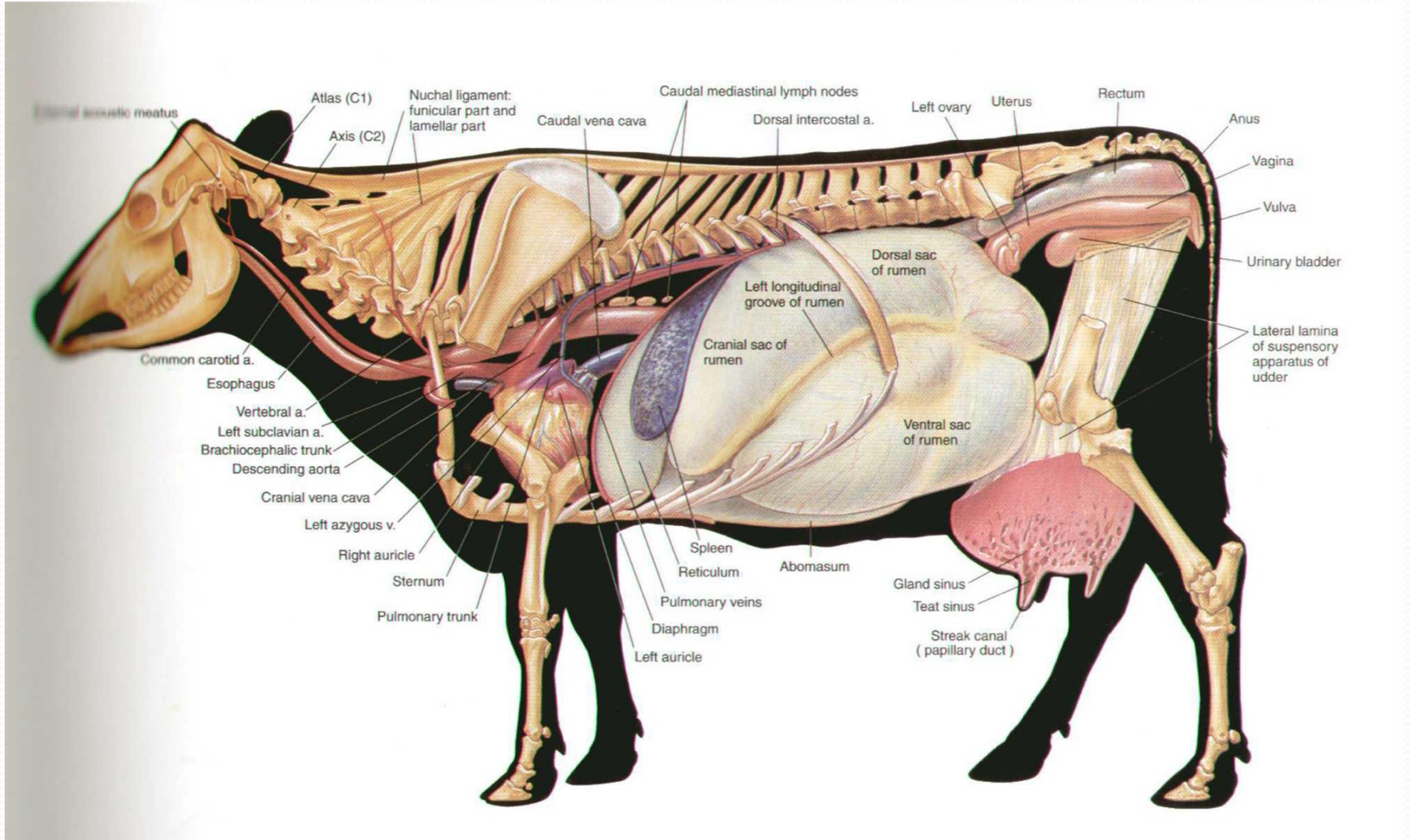
محوطه شکمی در سگ

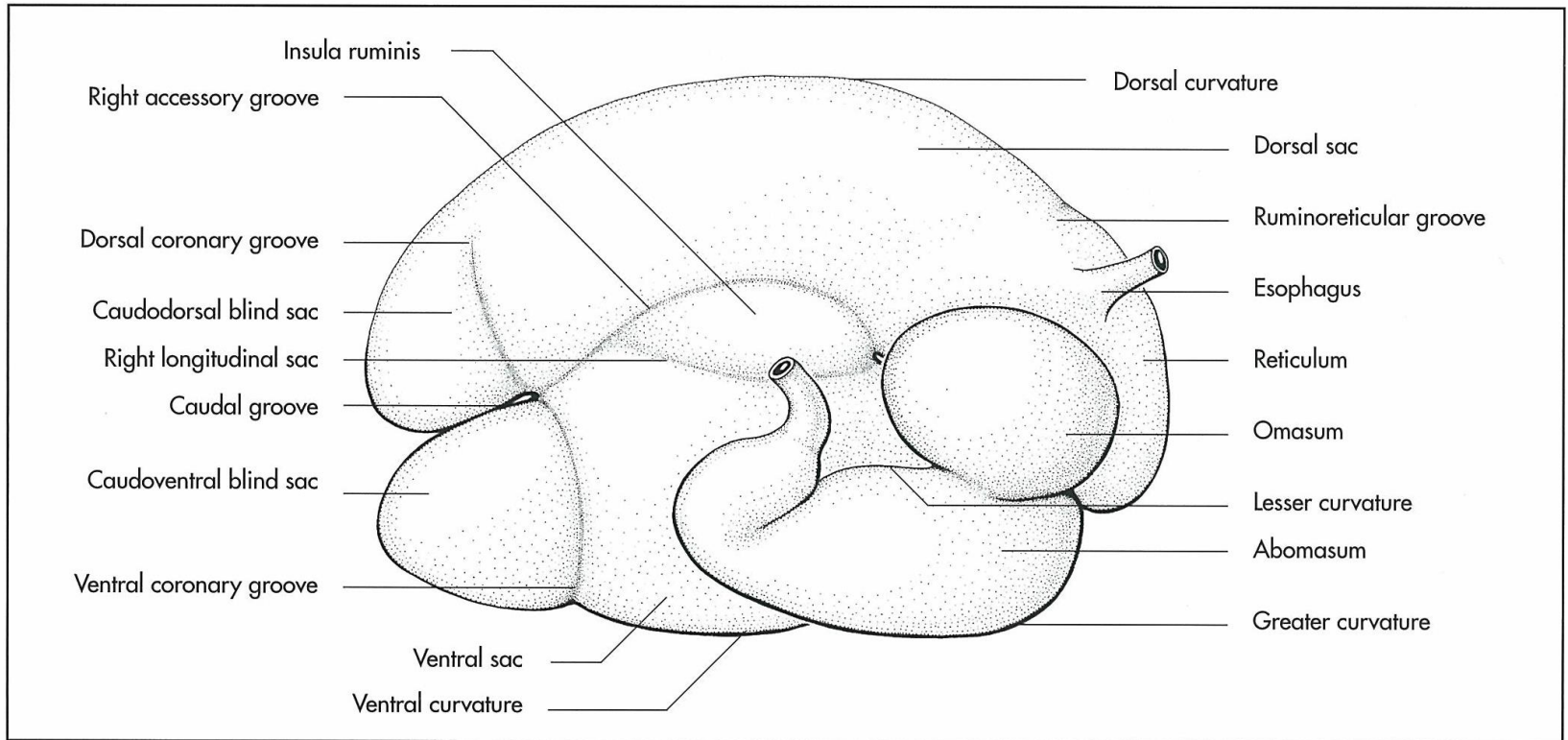


# *Stomach in Ruminant*

- Rumen شکمبه / غیر غده ای
- Reticulum نگاری / غیر غده ای
- Omasum هزارلا / غیر غده ای
- Abomasum شیردان / غده ای (معدده ی اصلی)







**Fig 7-66.** Compartments of the stomach of the ox, right lateral aspect, schematic (Schaller, 1992).

# Intestines

## روده ها

روده ی کوچک ( *Small intestine* )

دوازدهه : قسمت جلویی ، دوازدهه نزولی ، دوازدهه صعودی

تهی روده

ایلیوم

روده ی بزرگ ( *Large intestine* )

روده ی کور ( سکوم )

کولون ها : کولون صعودی ، کولون عرضی ، کولون نزولی

راست روده ( رکتوم )

مقعد

# دوازدهه شامل: بخش قدامی ، بخش نزولی ، بخش صعودی

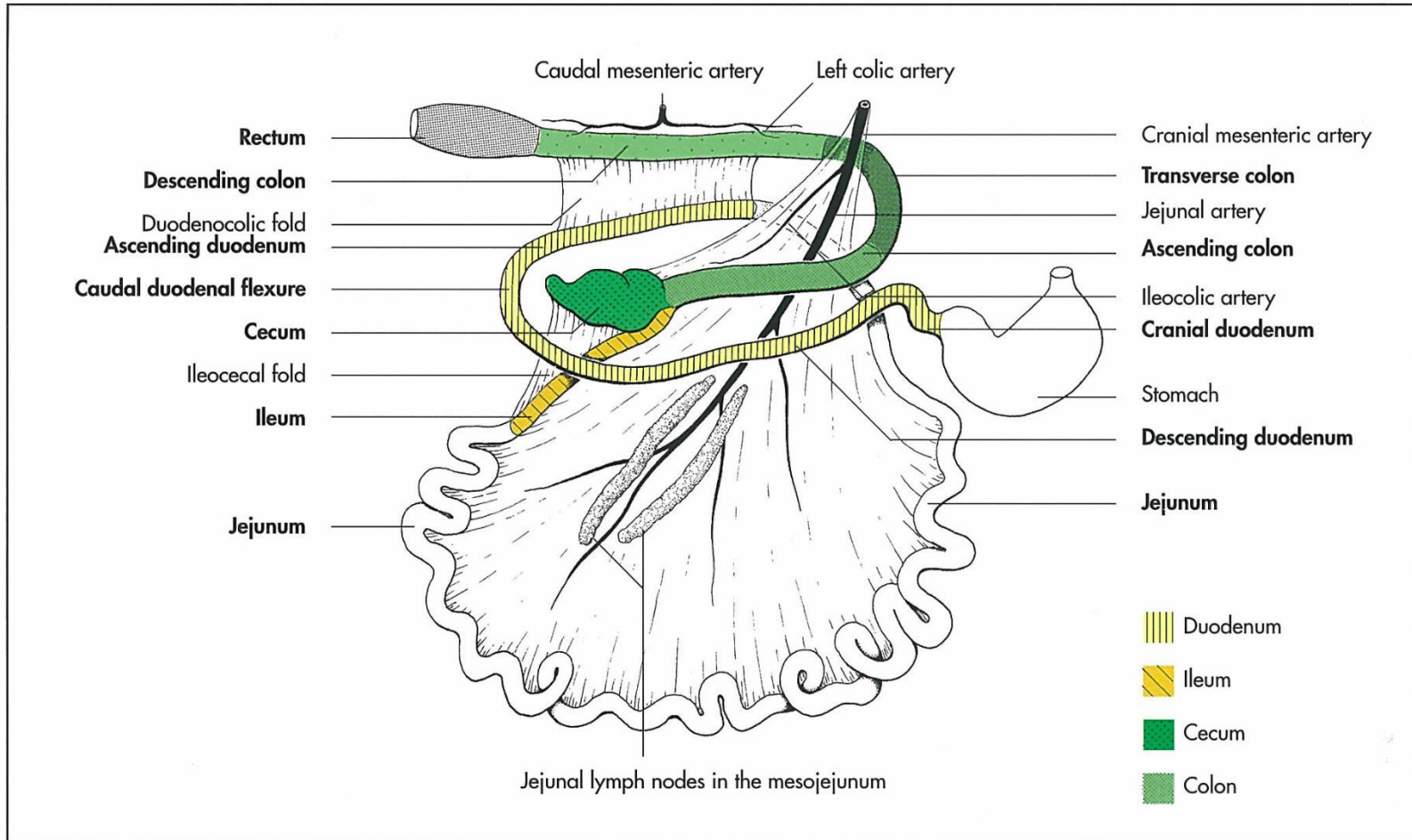
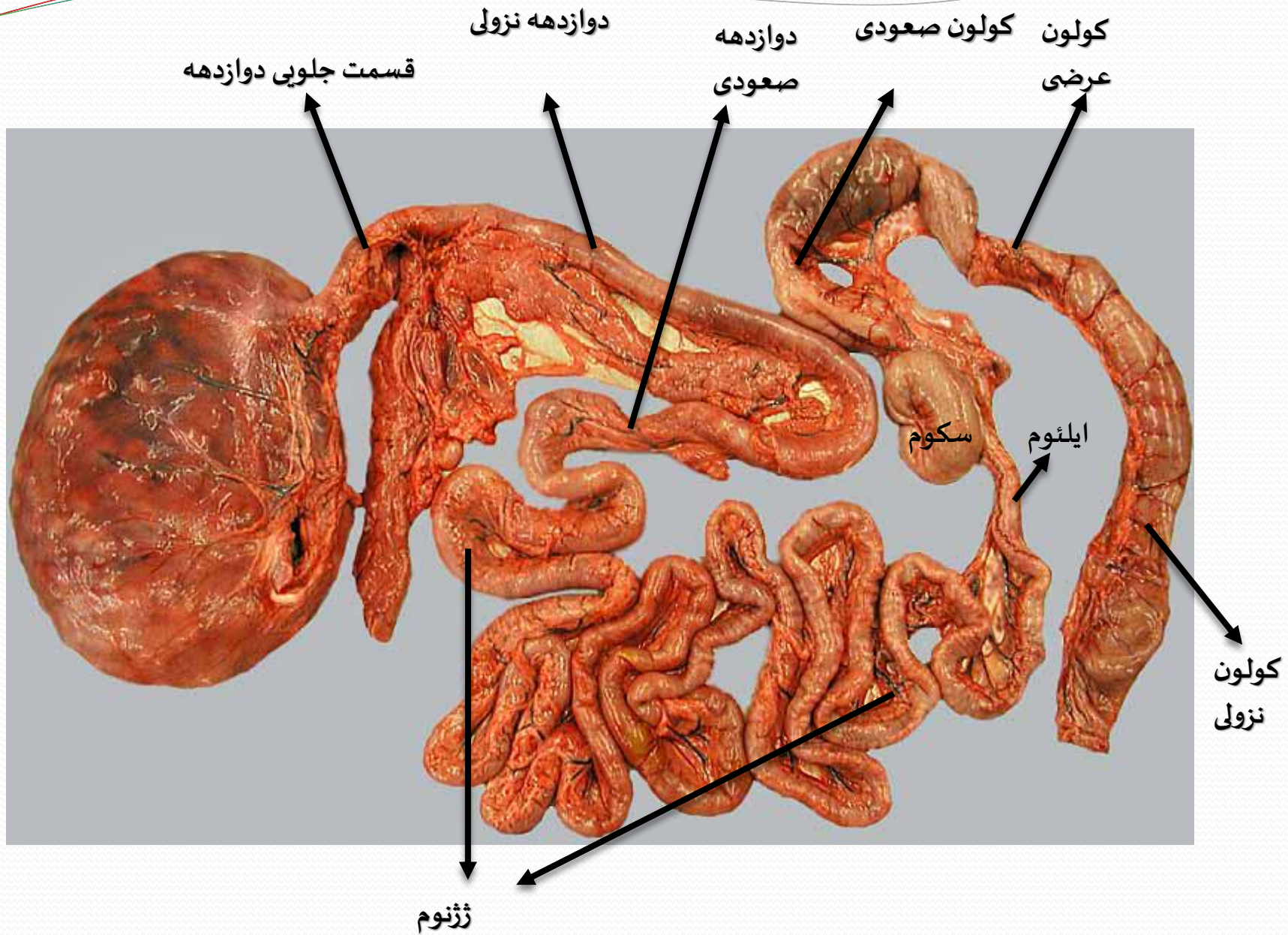
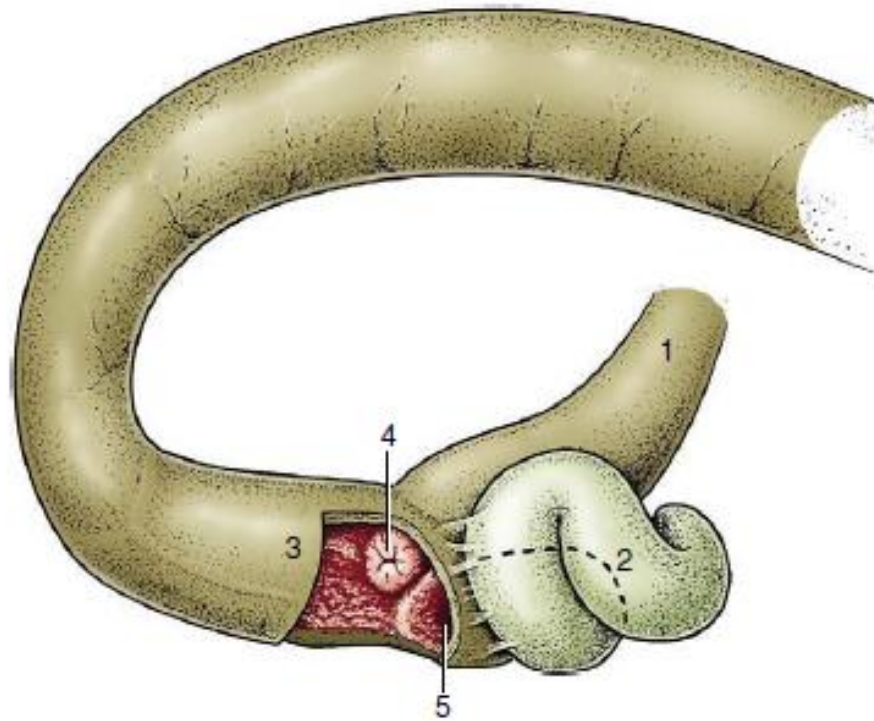


Fig 7-85. Intestinal tract of the dog, schematic (Ghetie, 1958).



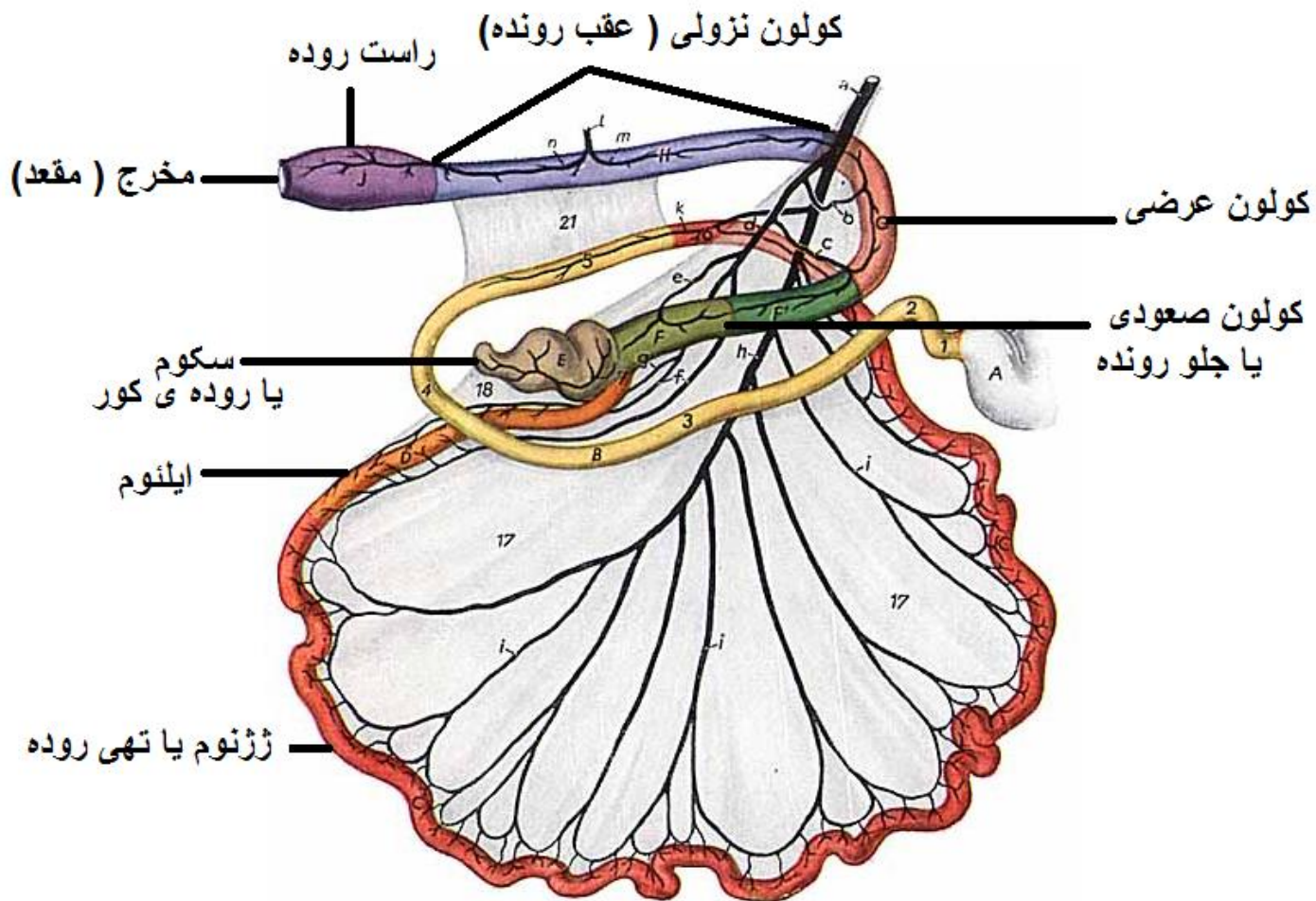


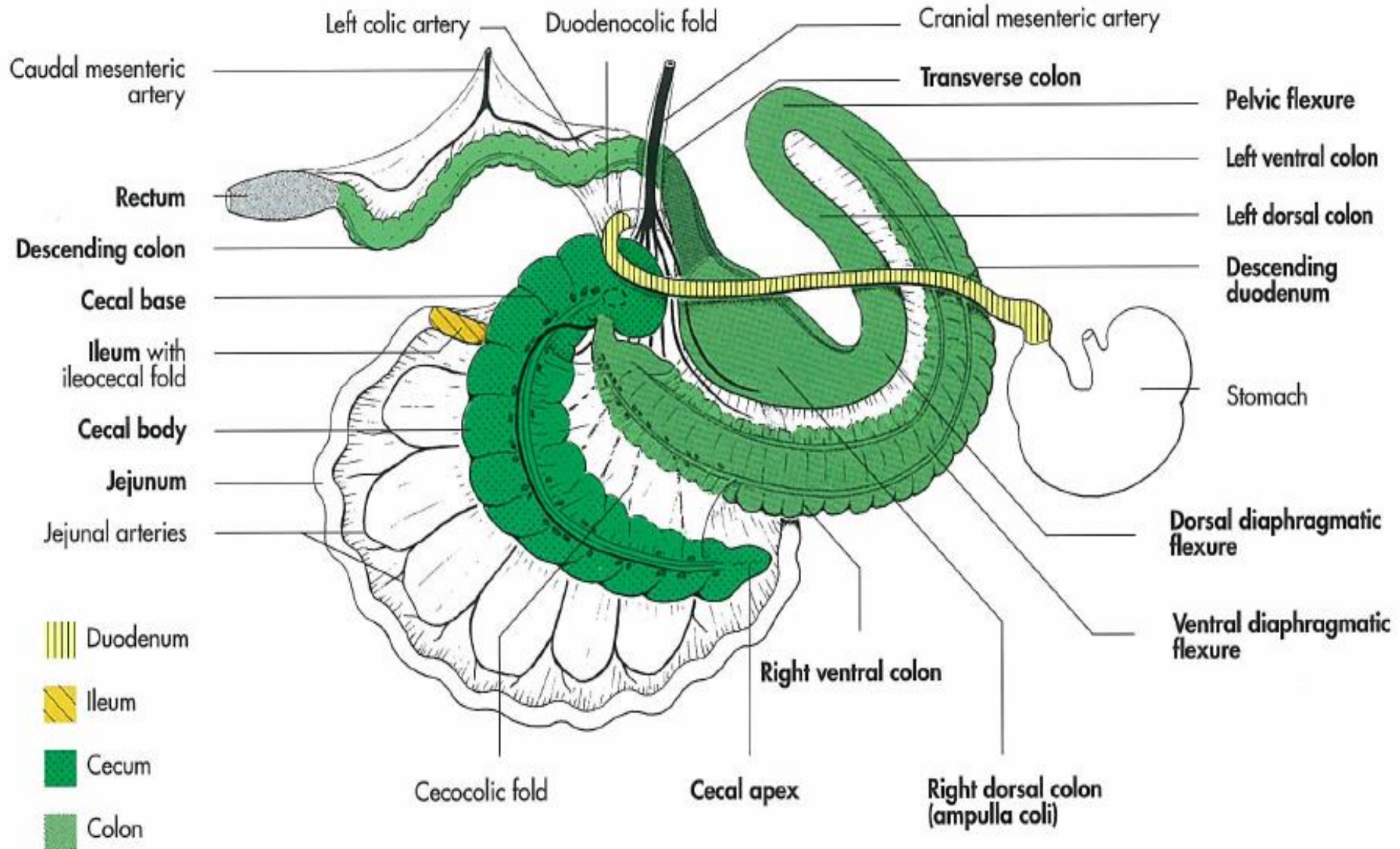
**Figure 3-46** The ileocolic junction and its relation to the cecum in the dog. 1, ileum; 2, cecum; 3, ascending colon; 4, ileal orifice surrounded by annular fold; 5, cecocolic orifice.

اتصال ایلئوم به سکوم و کولون



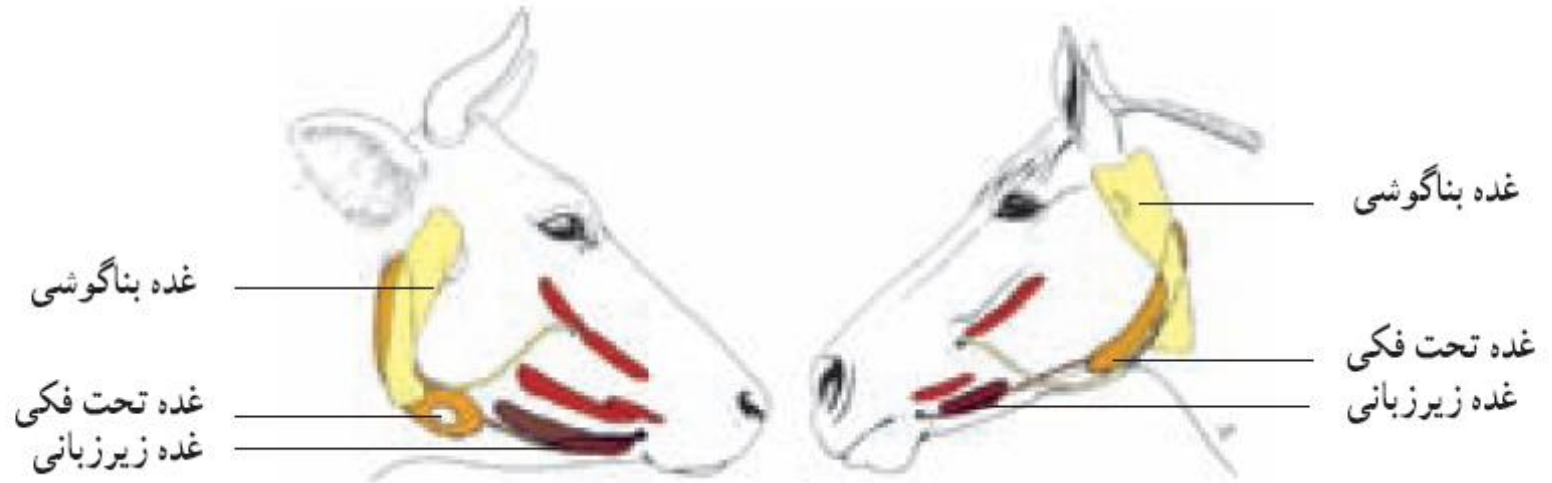
روده ی بزرگ : سکوم ، کولون ها ، راست روده مخرج  
 کولون : صعودی ( جلو رونده ) ، عرضی ، نزولی



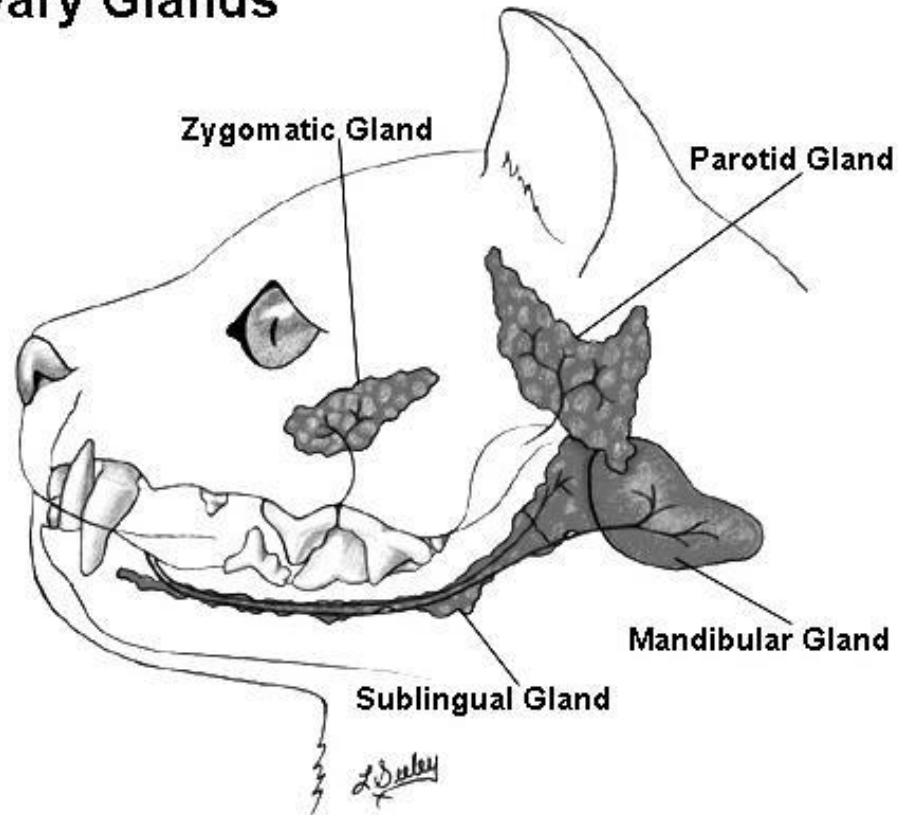


# Salivary glands

# غدد بزاقی



## Salivary Glands

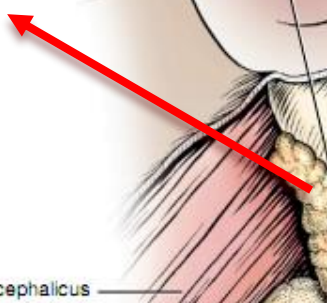
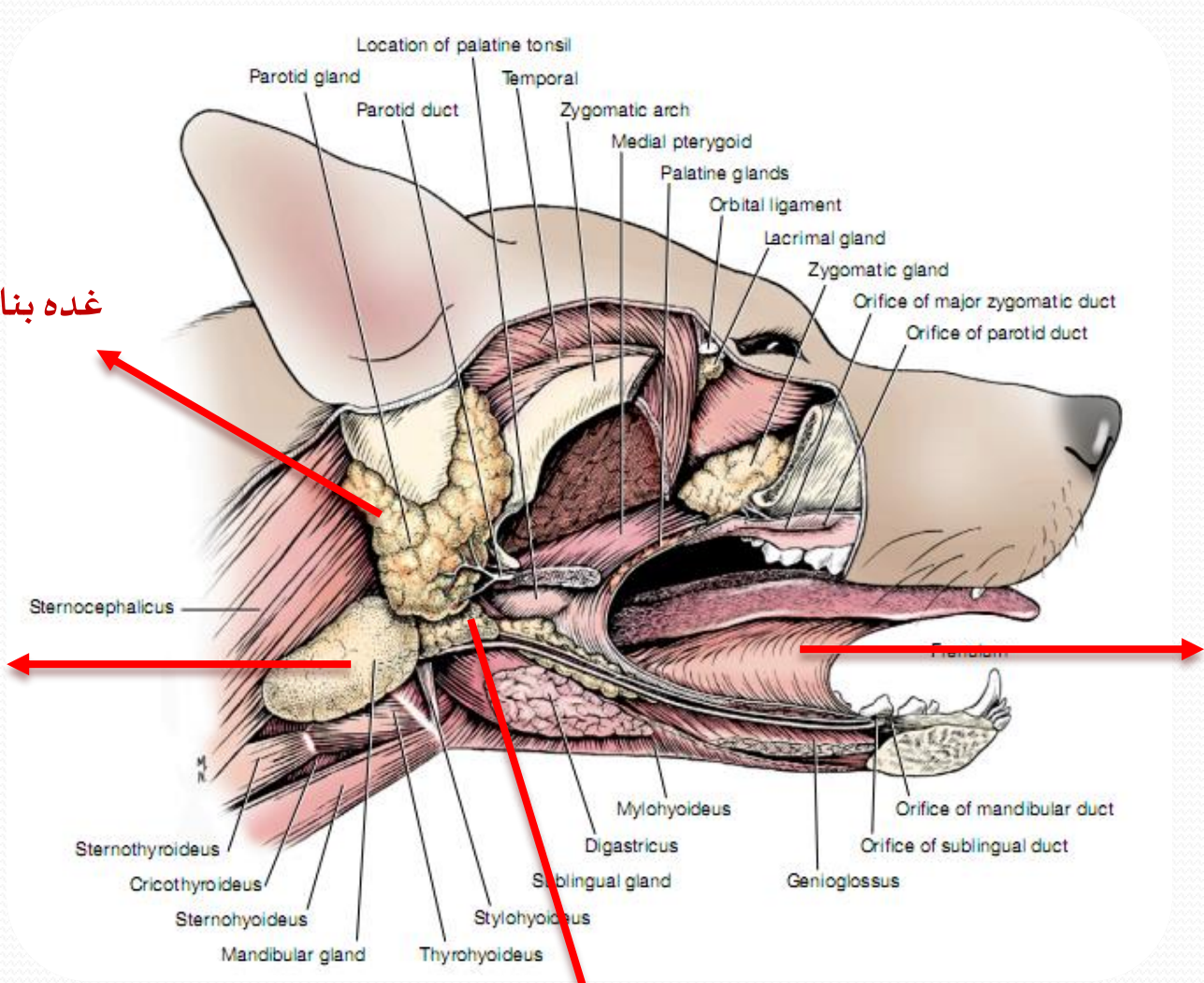


غده بناگوشی

غده فک پائینی

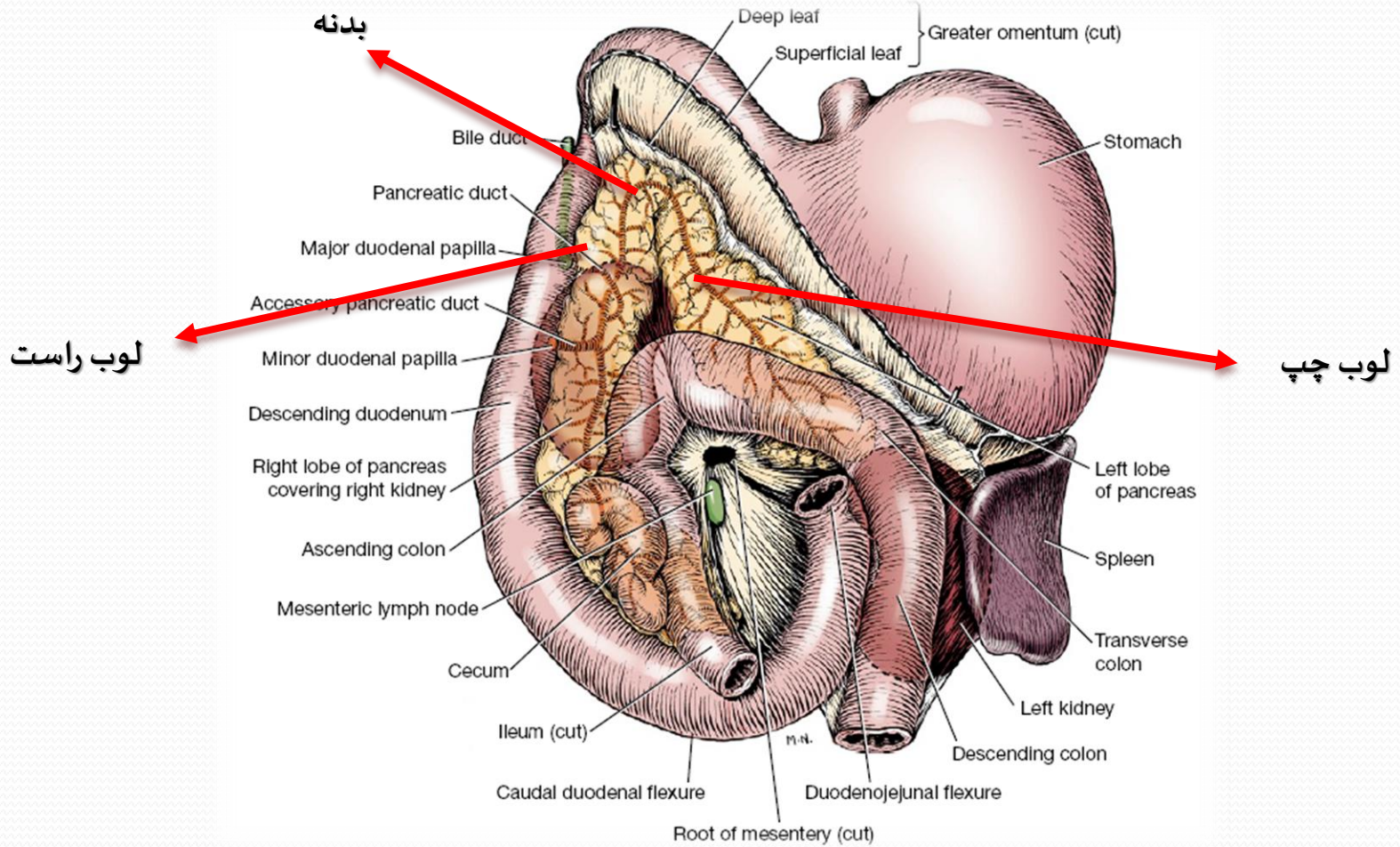
غده زیرزبانی

ترمزبان



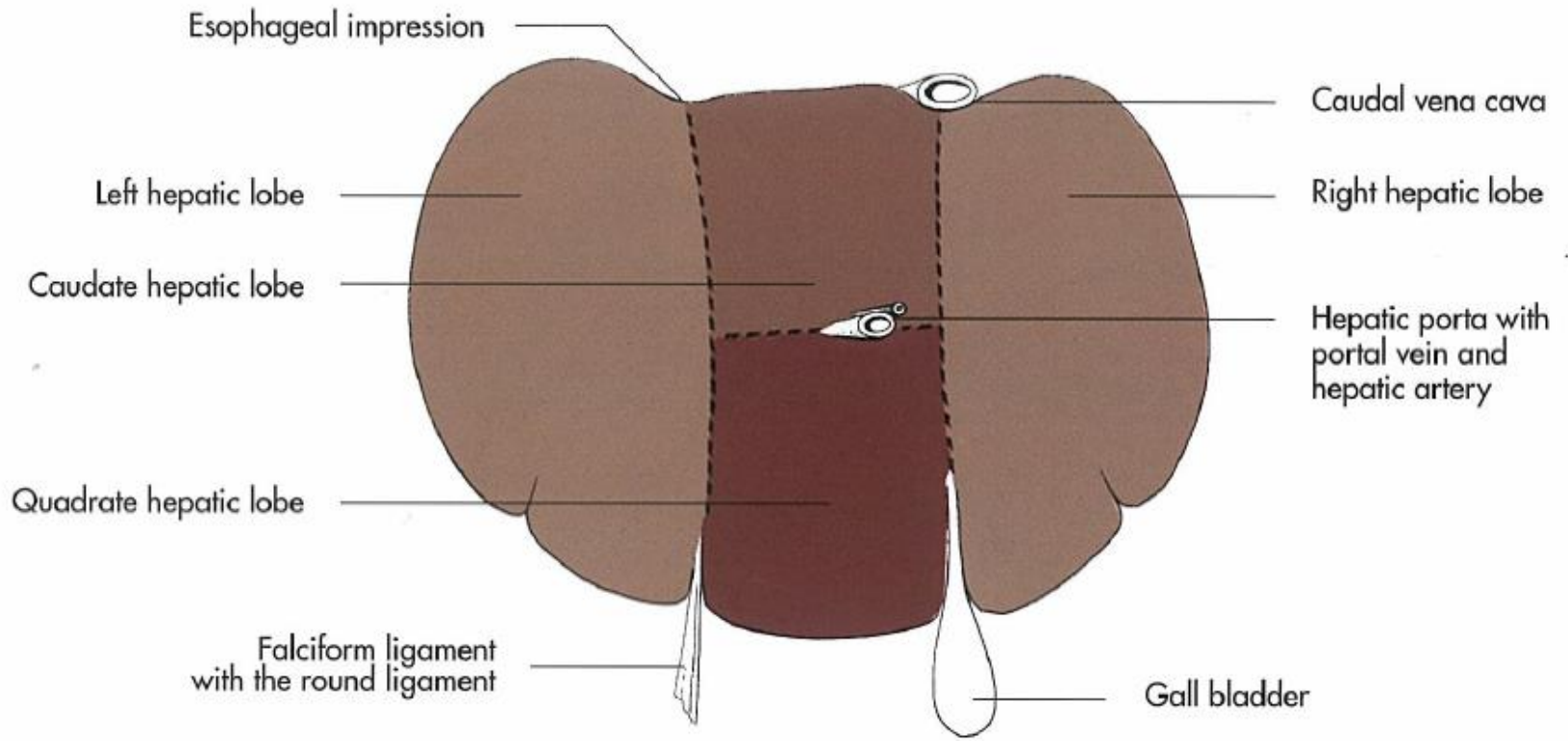
# Pancreas

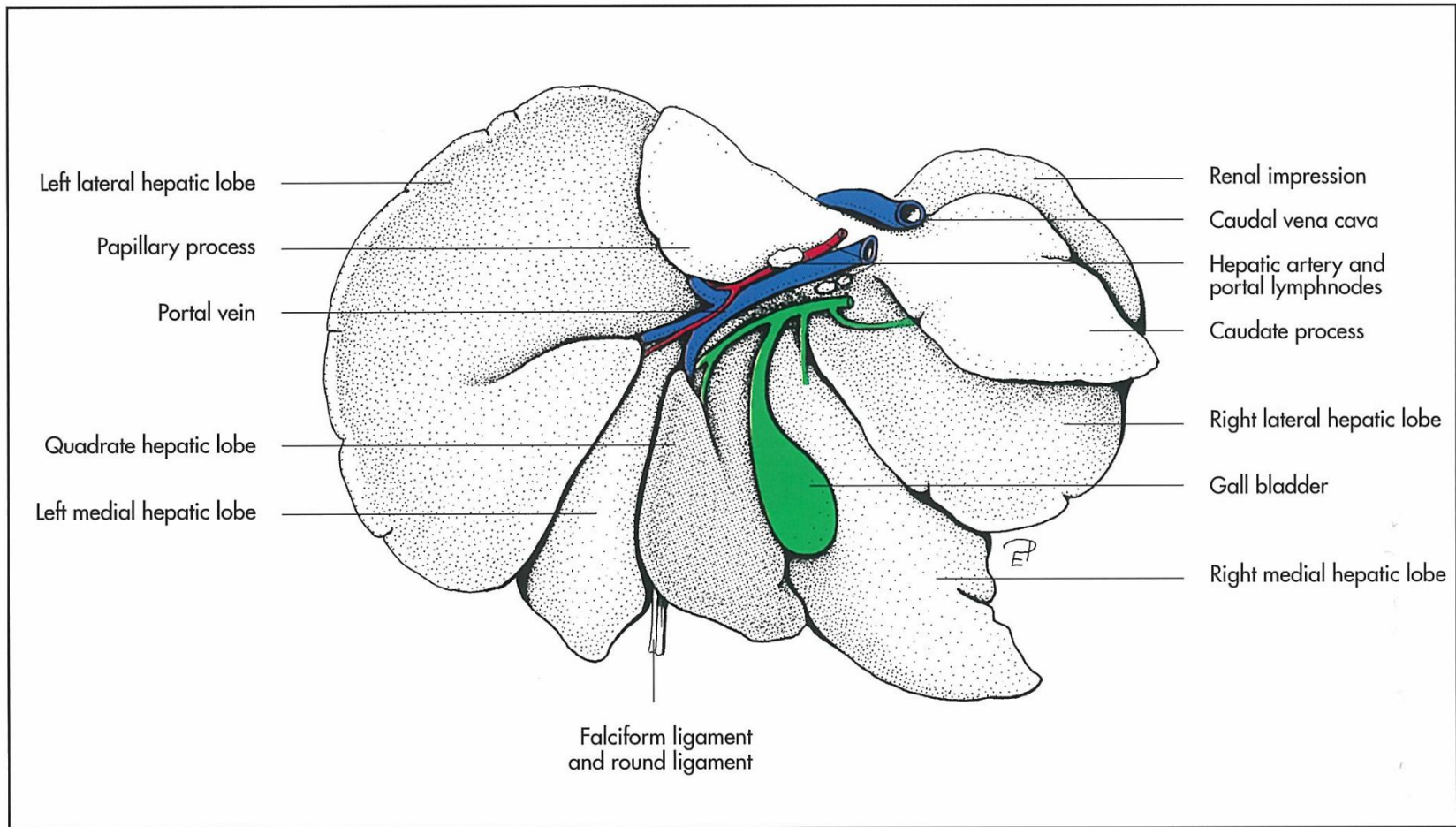
# پانکراس



# *liver*

# کبد





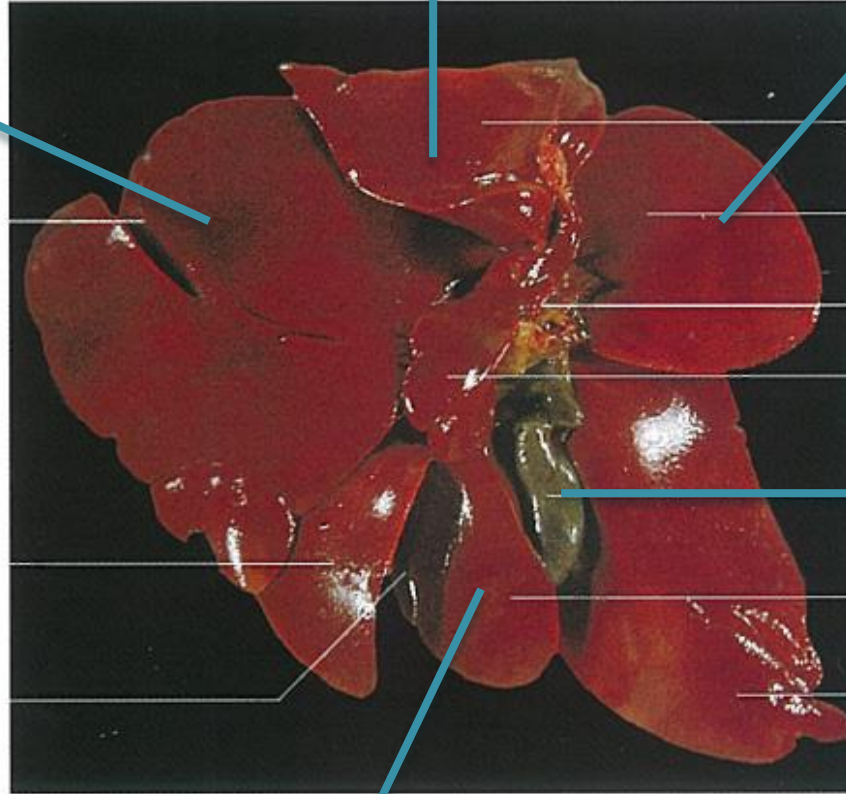
**Fig 7-97.** Liver of the dog, schematic, visceral surface.



لوب دمی

لوب راست

لوب چپ



Left lateral hepatic lobe

Caudate hepatic lobe  
(Caudate process)

Right lateral hepatic lobe

Hepatic portal

Papillary process

Gall bladder کیسه صفرا

Quadrangle hepatic lobe

Right medial hepatic lobe

Left medial hepatic lobe

Incision of the round ligament

Liver of a cat, visceral surface (König, 1992).

لوب مربعی

