

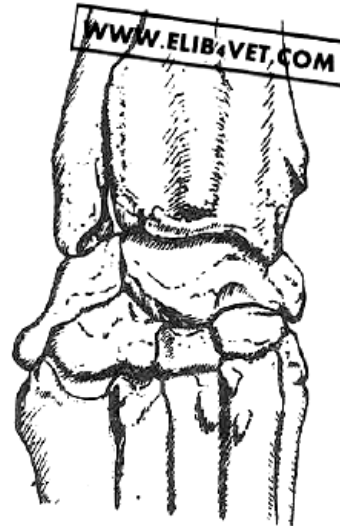
انواع استخوان از نظر شکل

1-Long Bone ■

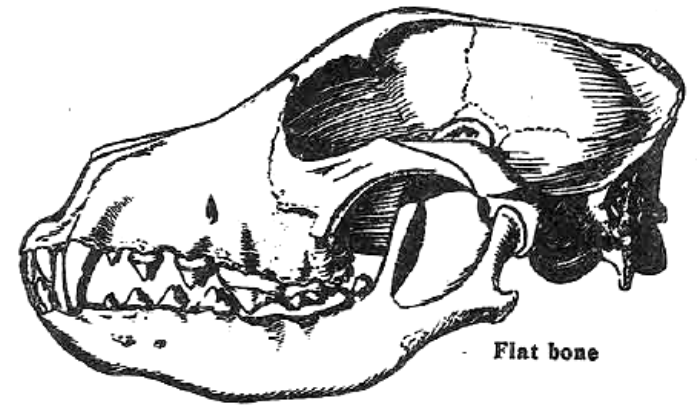
2-Short Bone ■

3-Flat Bone ■

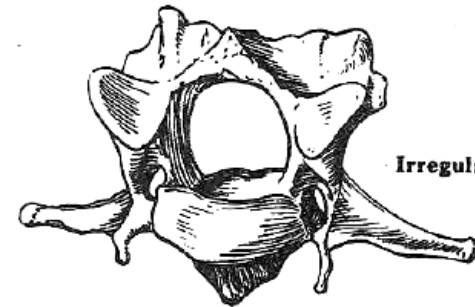
4-Irregular Bone ■



Short bone



Flat bone



Irregular bone

Long bones استخوان های بلند

BONE PROCESSES

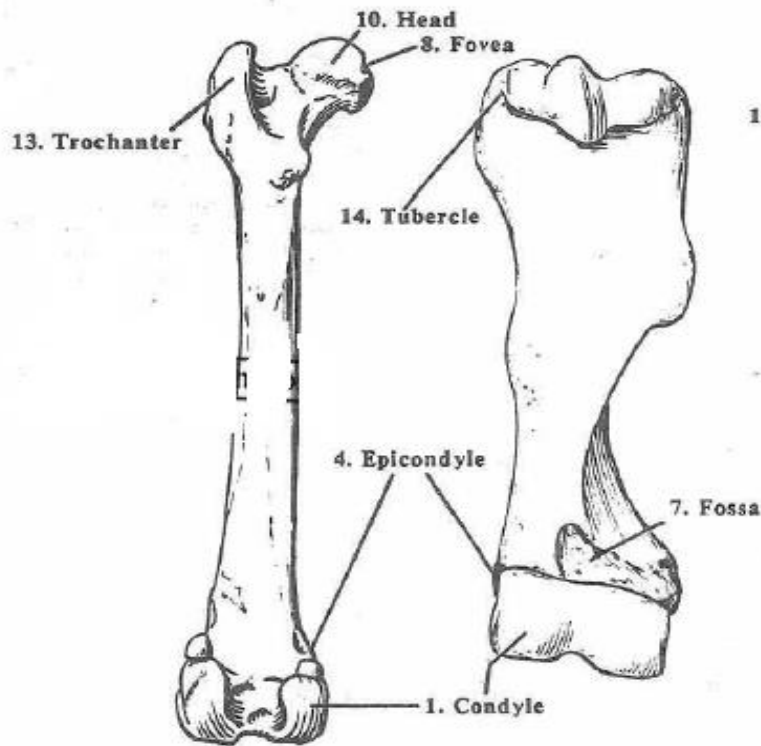


Fig. II-5 - Femur & Humerus

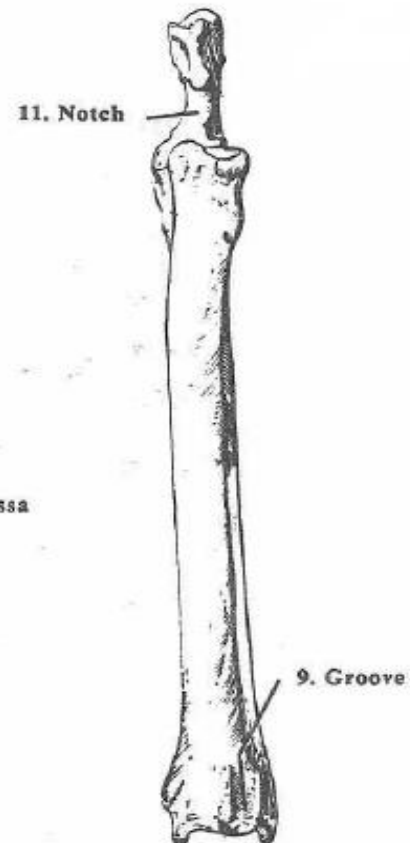
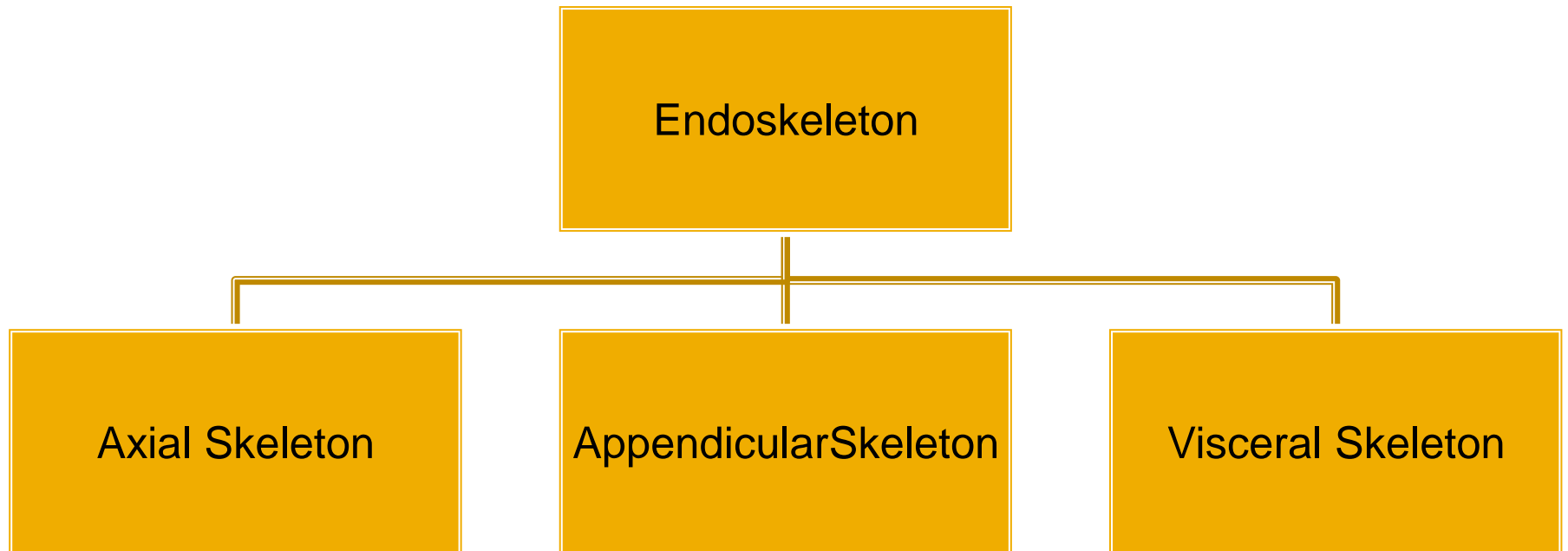


Fig. II-6 - Radius & Ulna

Ostology



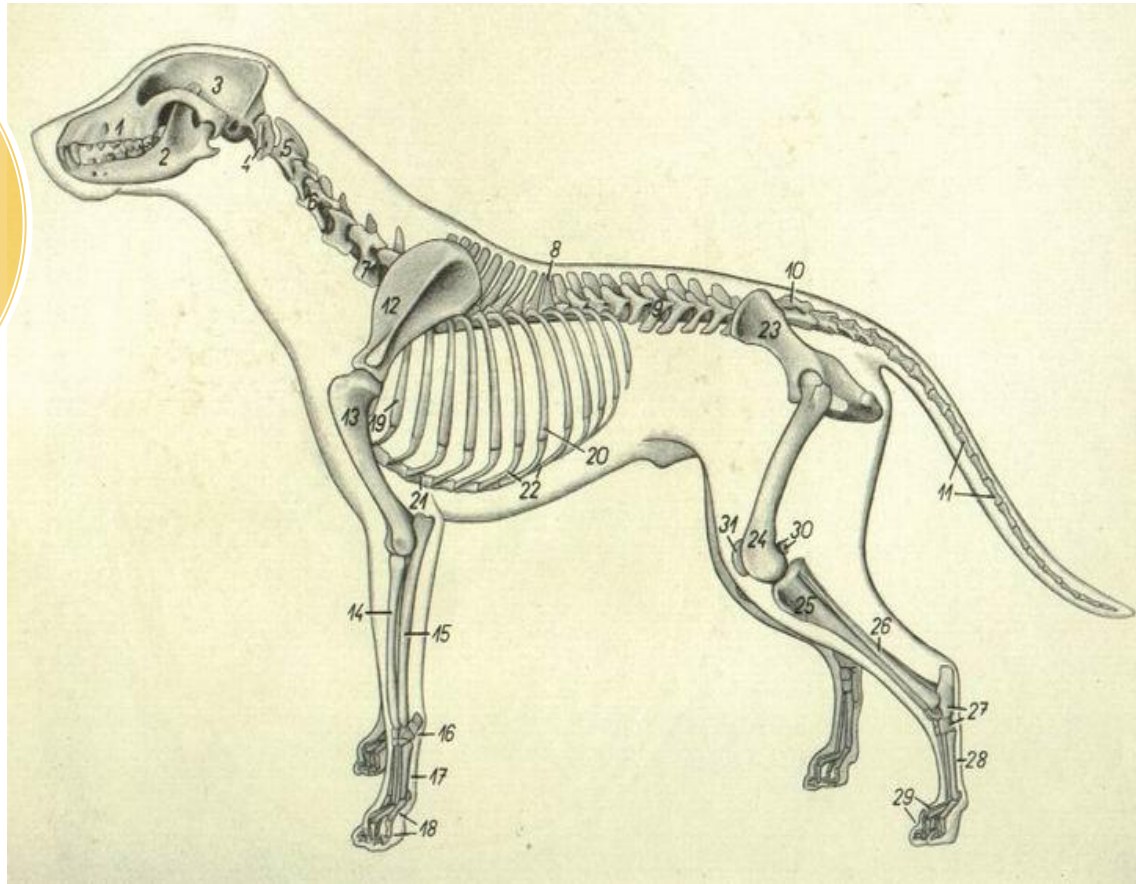
استخوان های محوری Axial skeleton

محوری

Skull

Thorax

Vertebral
collumn



Skull(Face)



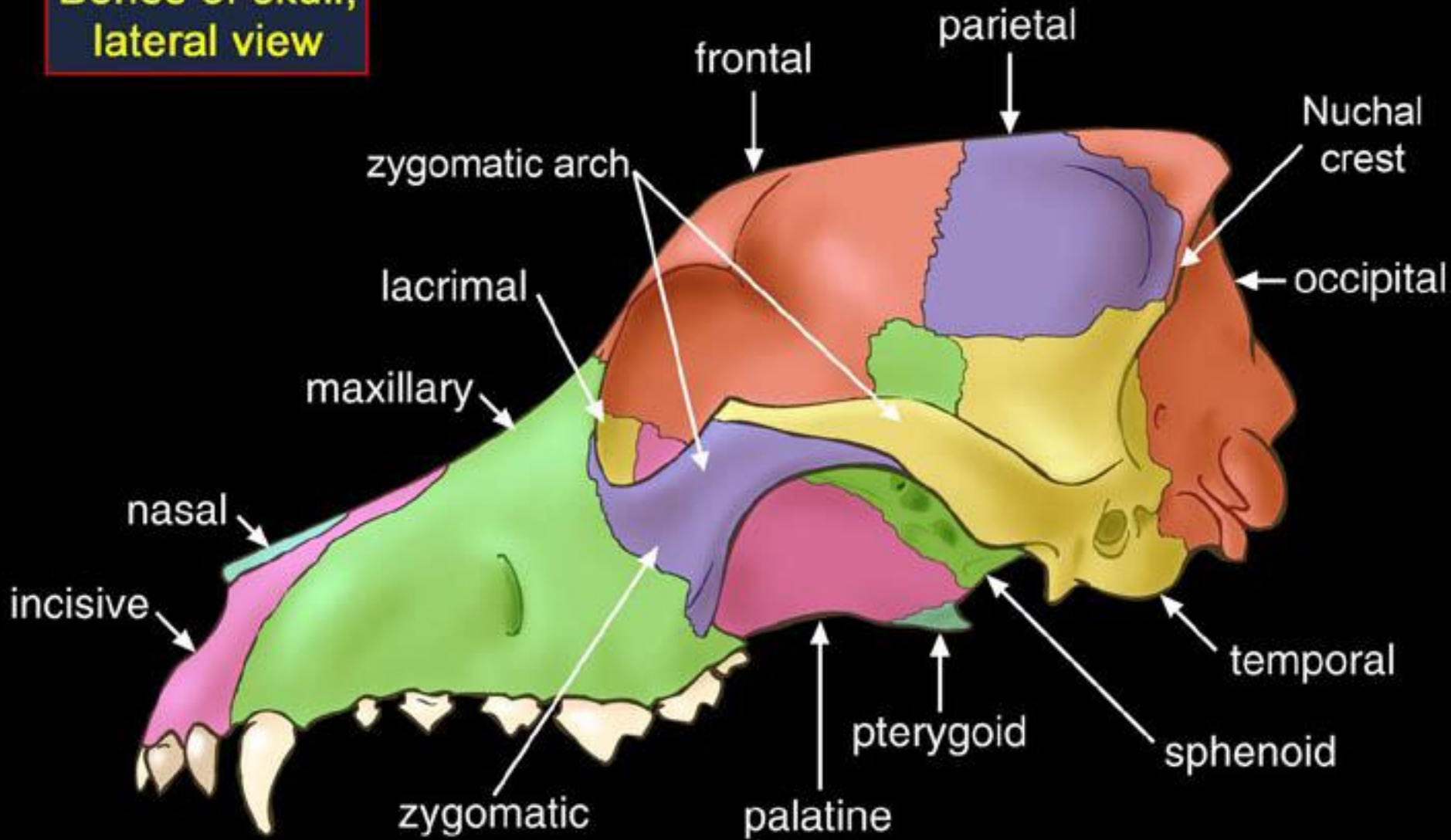
Maxilla-Incise- ■
Palatine-Ptrygoid-
Nasal-Lacrima-
Zygomatic-Vomer-
Mandibule

Skull(Cranium)

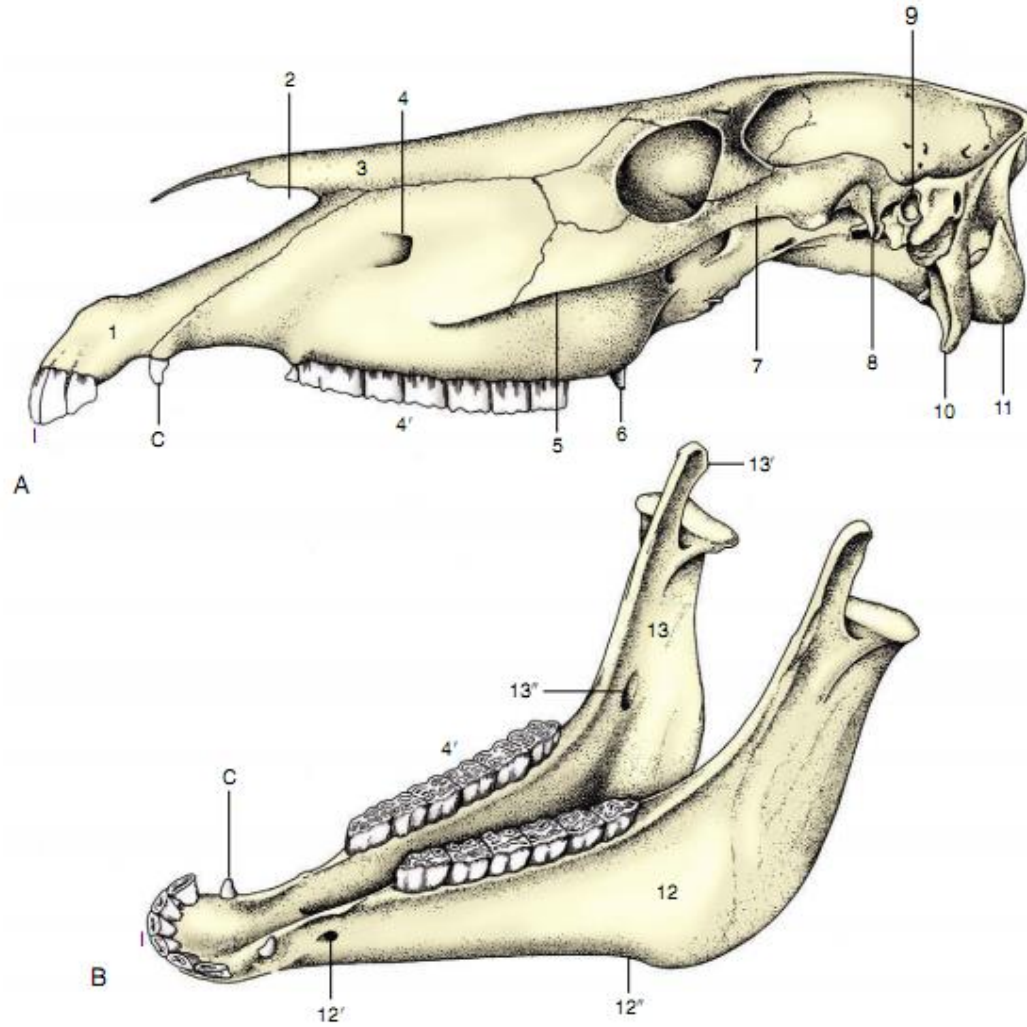


Occipital-Basisphenoid- ■
Presphenoid-Temporal-
Parietal-Interparietal-
Frontal-Ethmoid

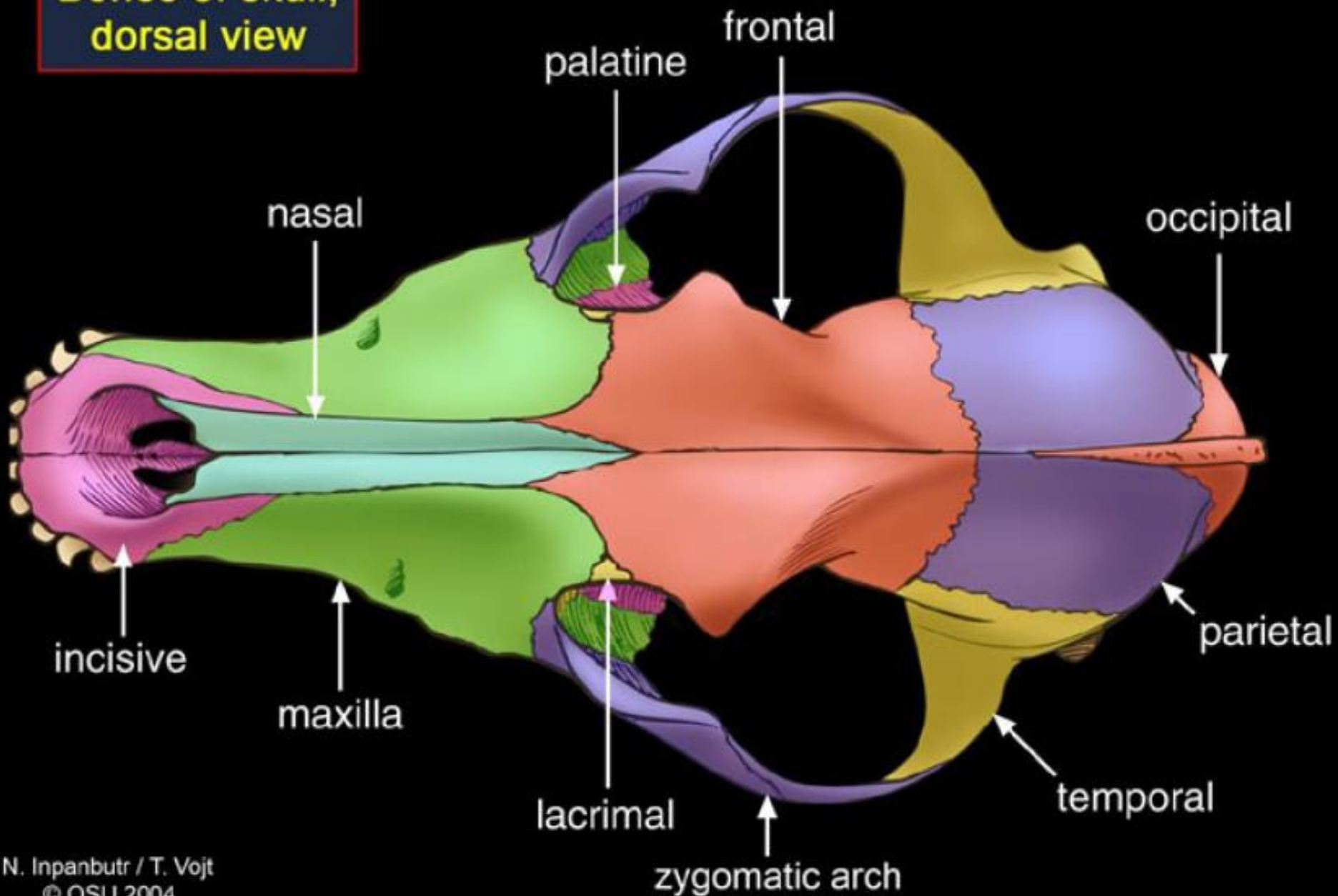
**Bones of skull,
lateral view**

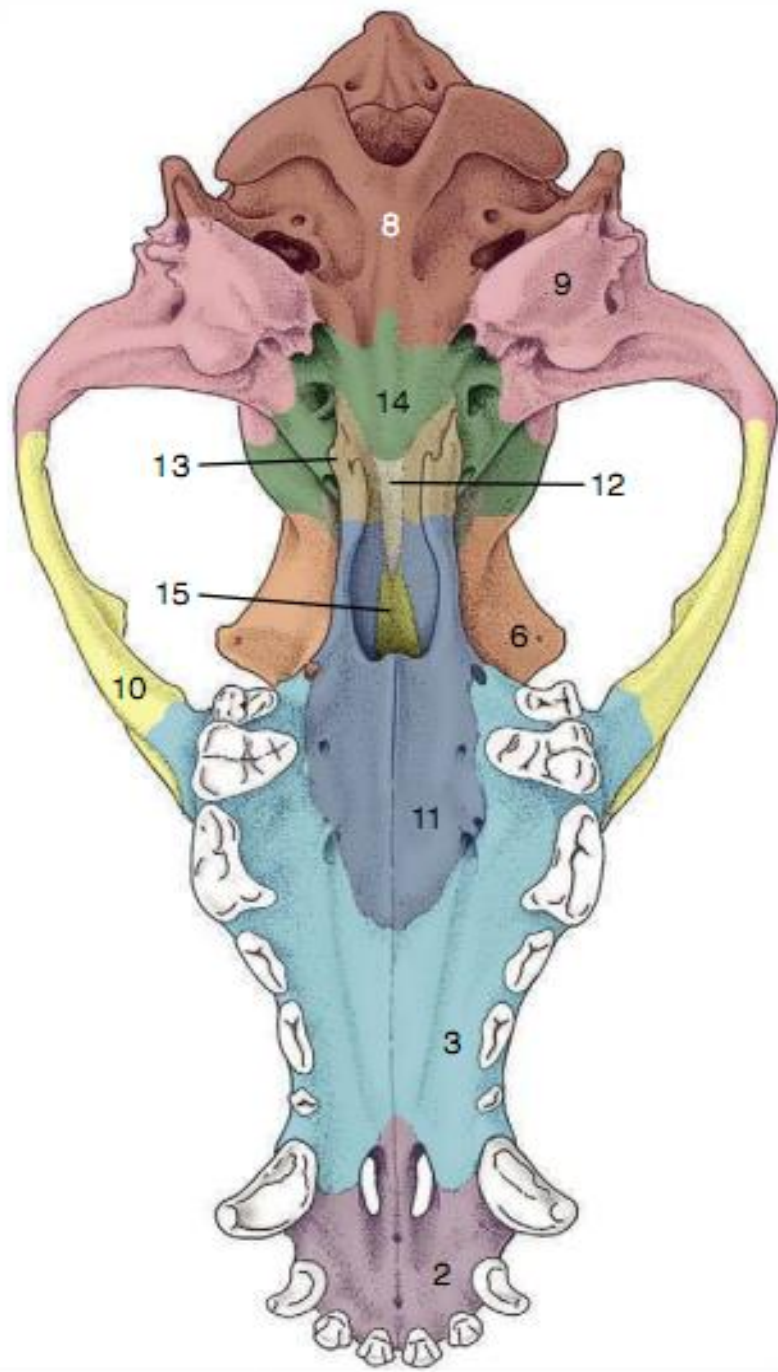
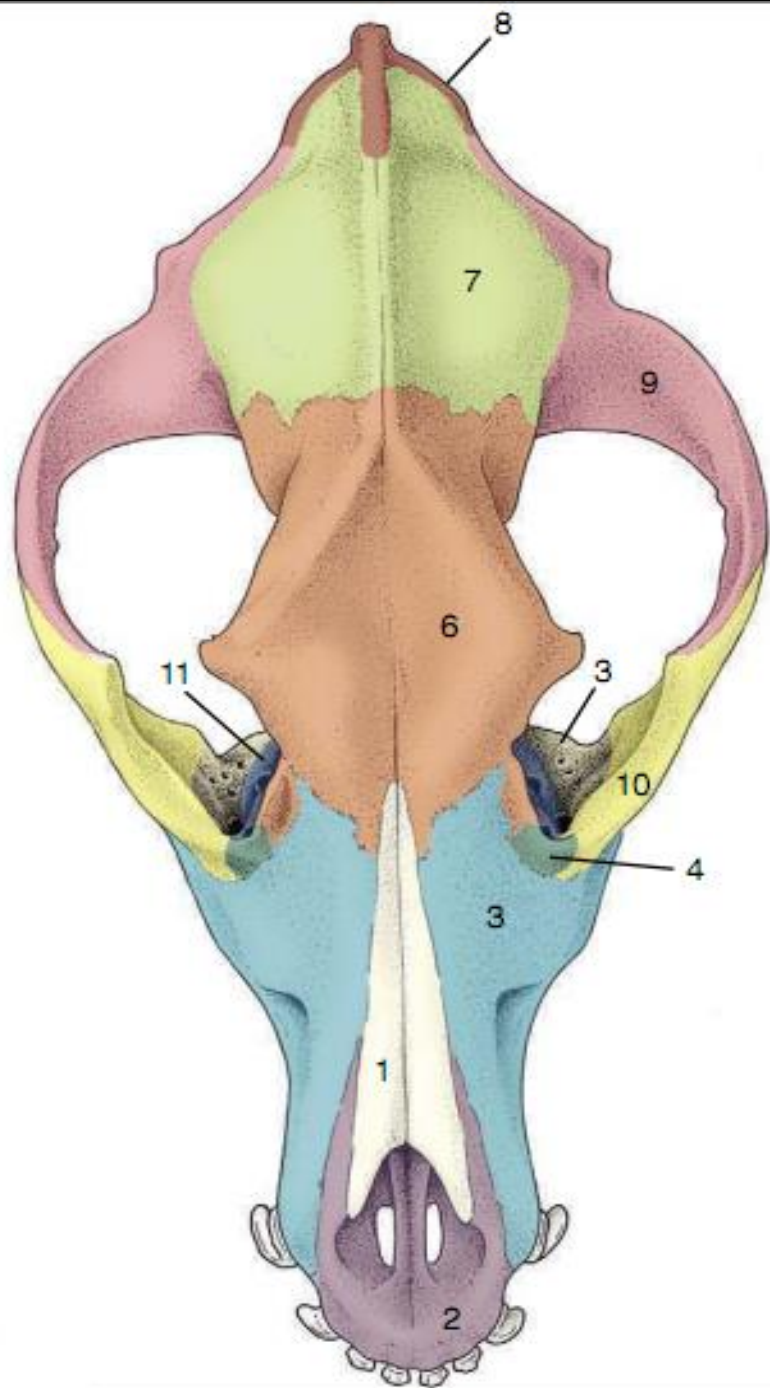


Temporomandibular Joint

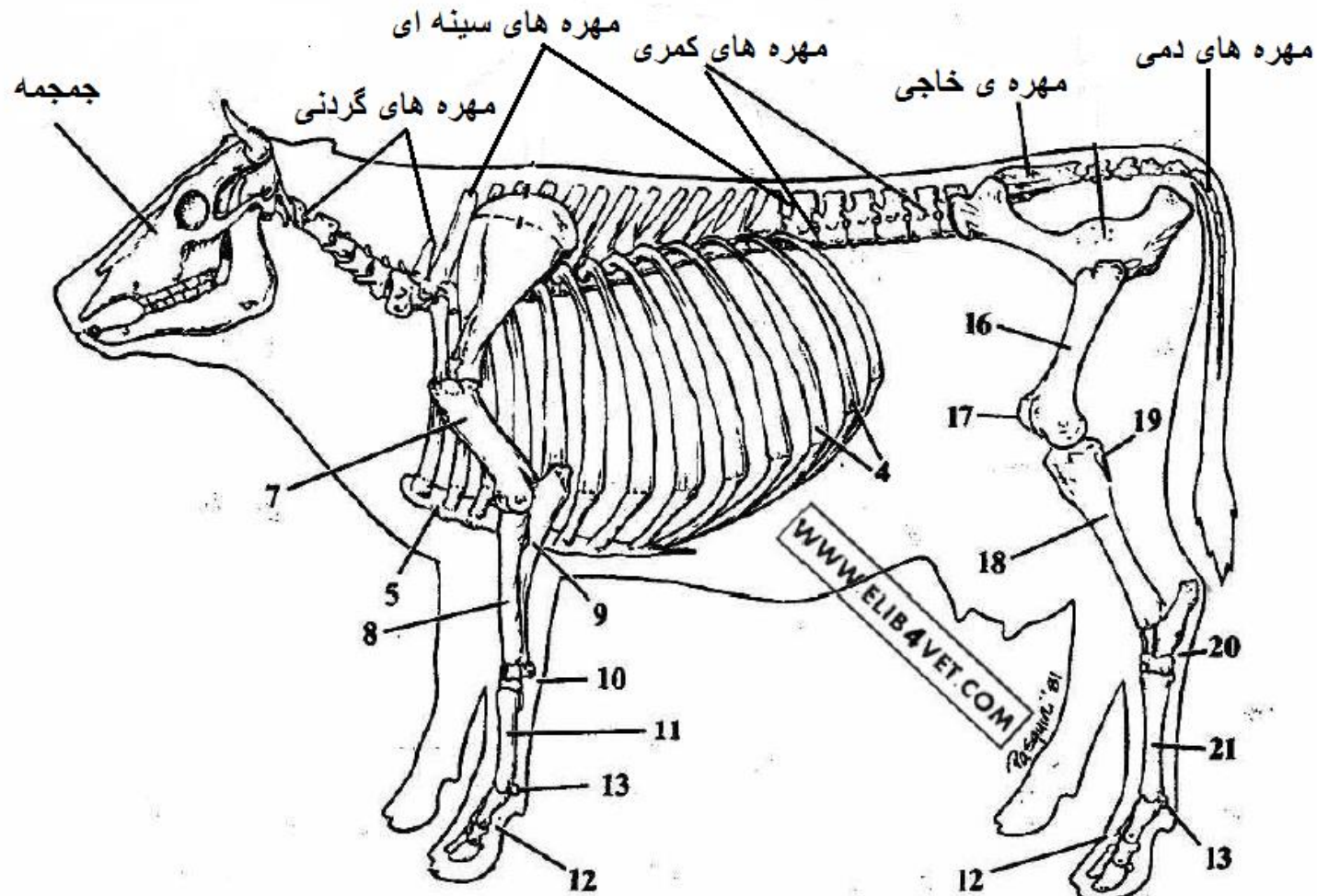


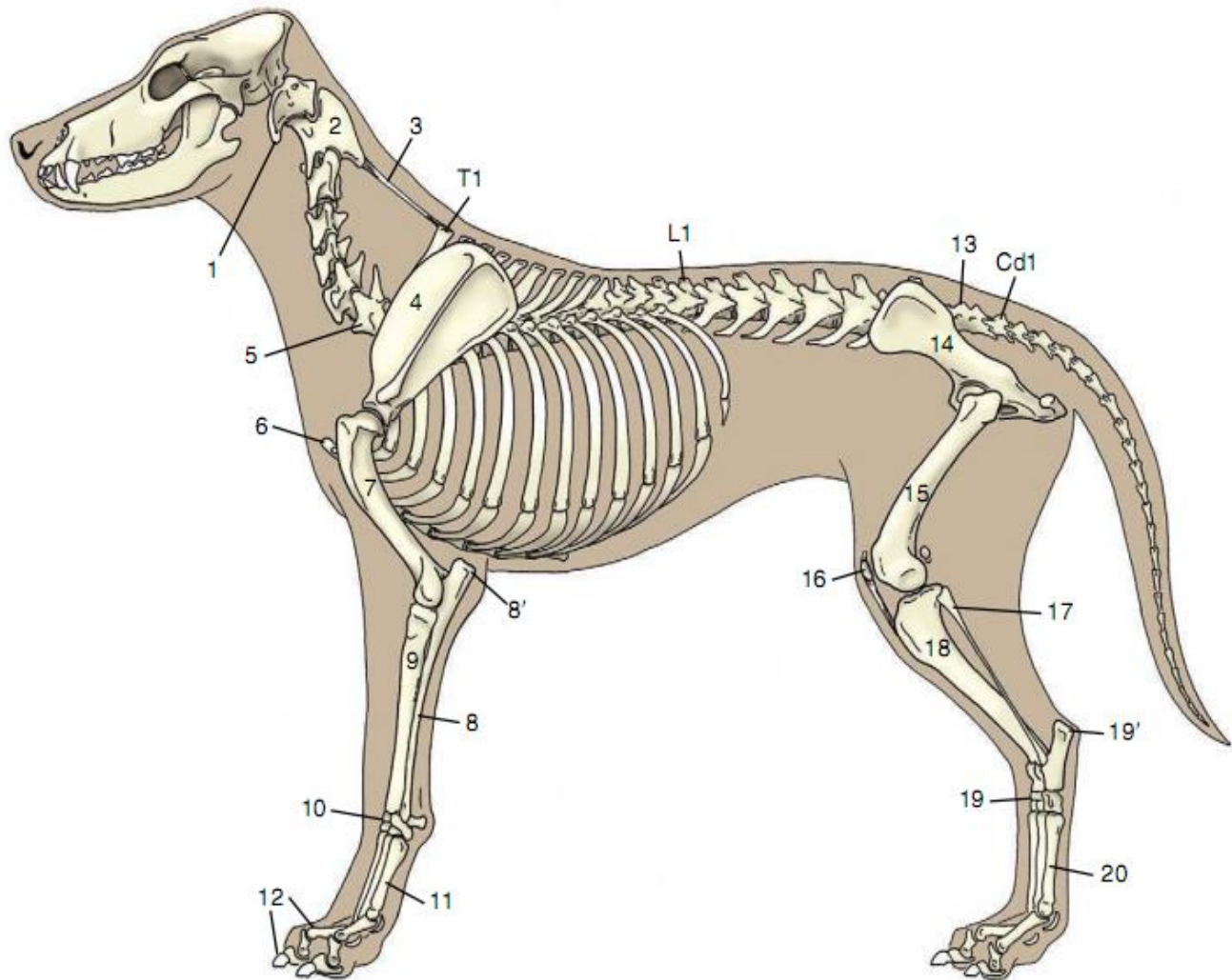
**Bones of skull,
dorsal view**



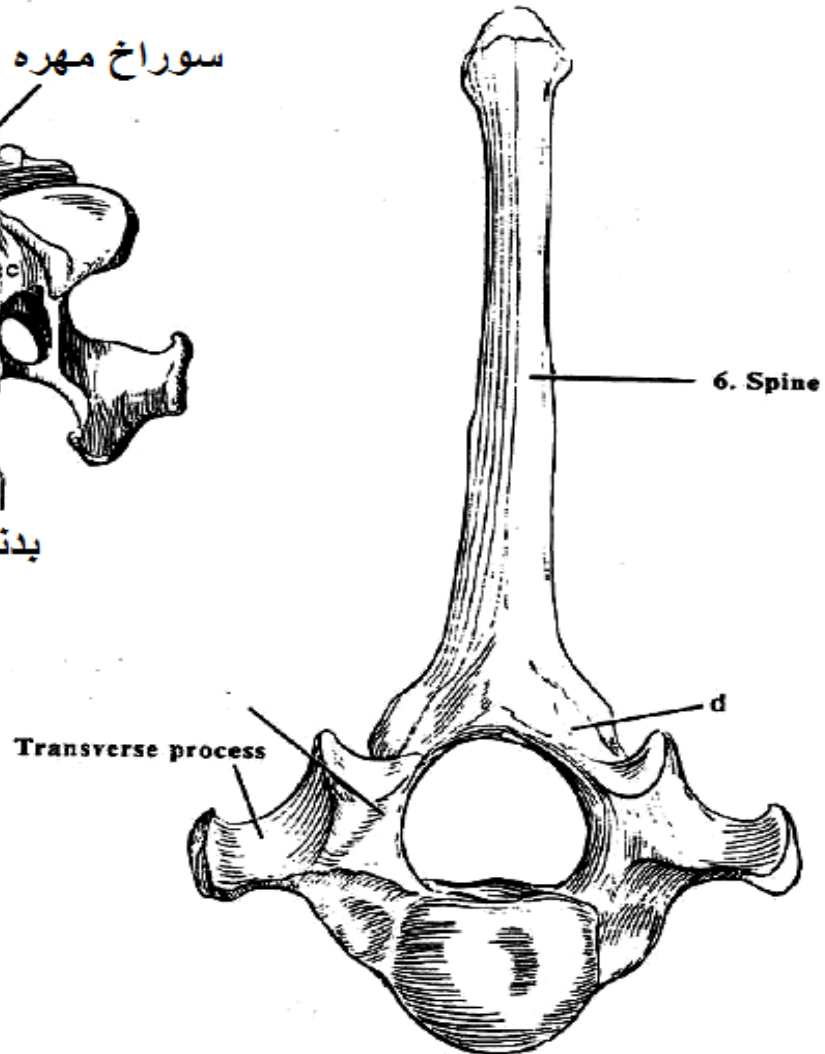
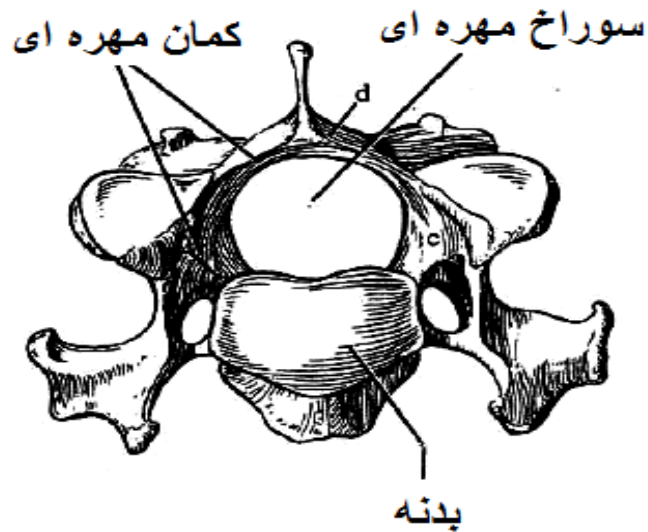


ستون مهره ها Vertebral collumn





مهره نمونه



غضروف بین مهره ای (دیسک)

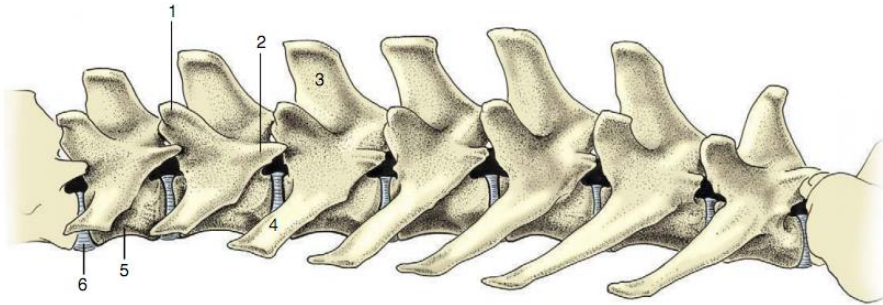


Figure 2-11 Lumbar vertebrae of the dog, left lateral view. 1, Mamillary process; 2, accessory process; 3, spinous process; 4, transverse process; 5, body; 6, intervertebral disk.

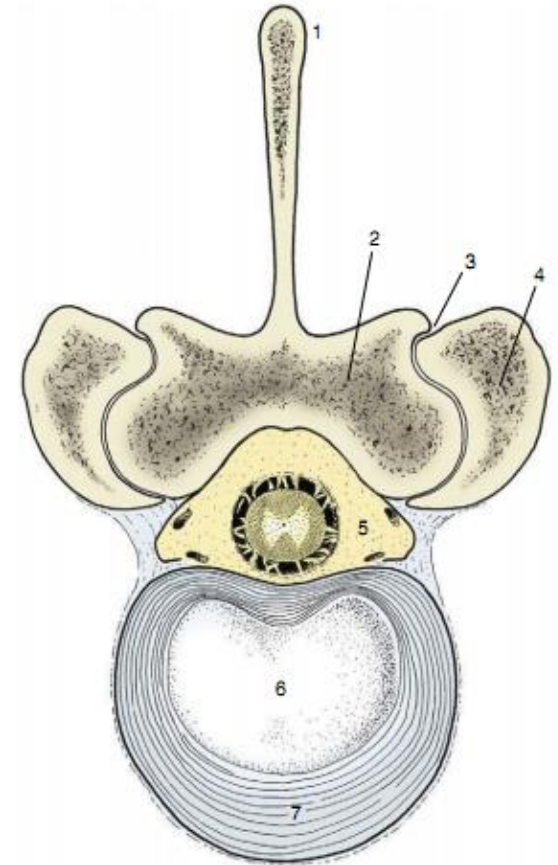
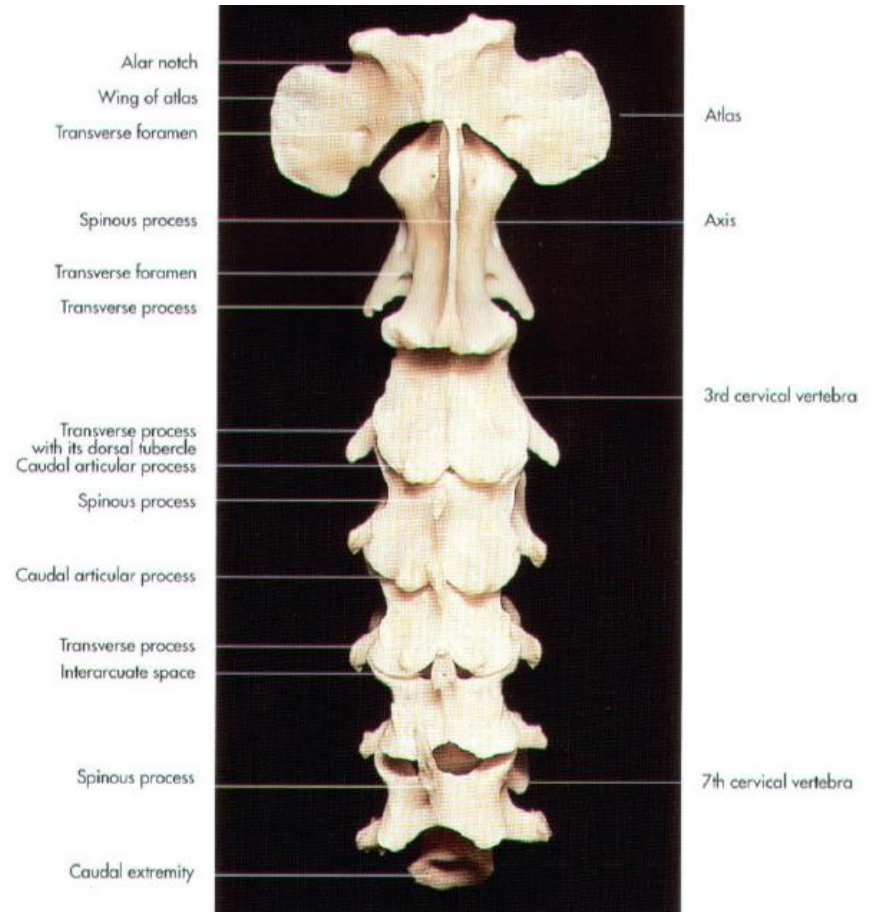
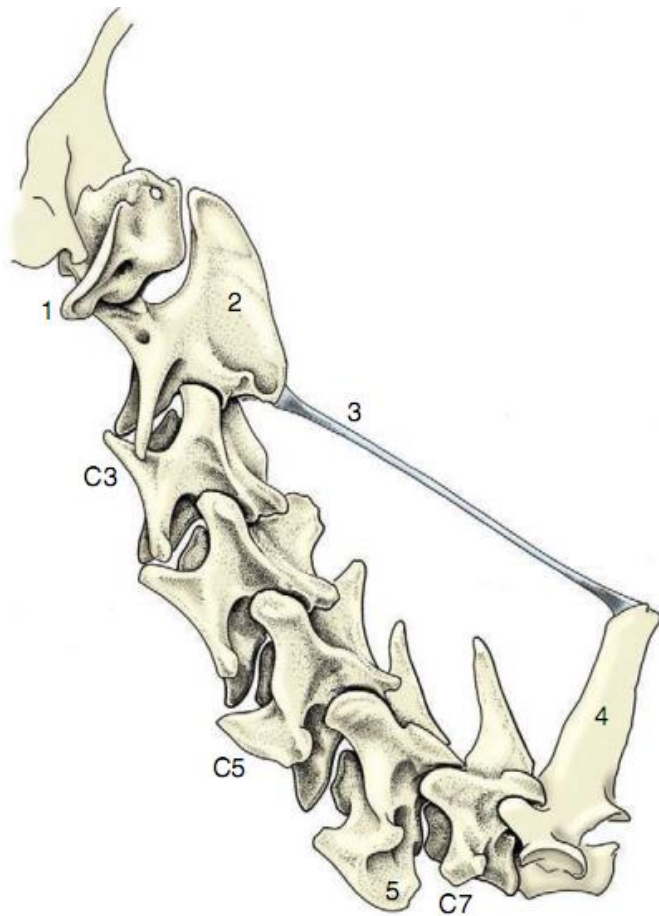
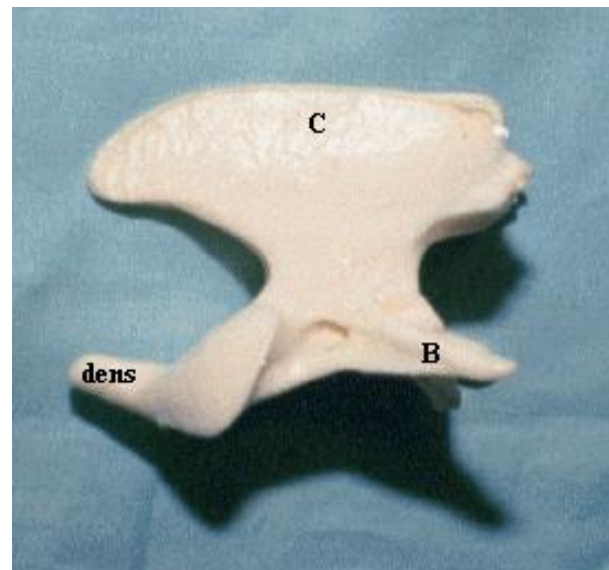


Figure 2-14 Bovine lumbar intervertebral disk. 1, Spinous process; 2, lamina; 3, synovial intervertebral joint; 4, articular process of adjacent vertebra; 5, vertebral canal with contents (spinal cord and meninges surrounded by epidural fat); 6, nucleus pulposus; 7, anulus fibrosus.

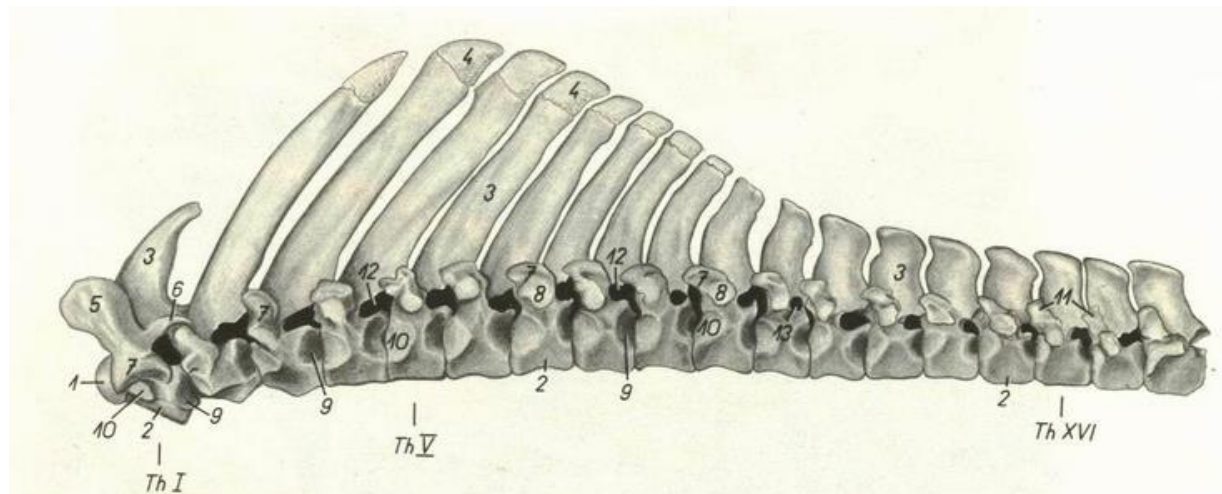
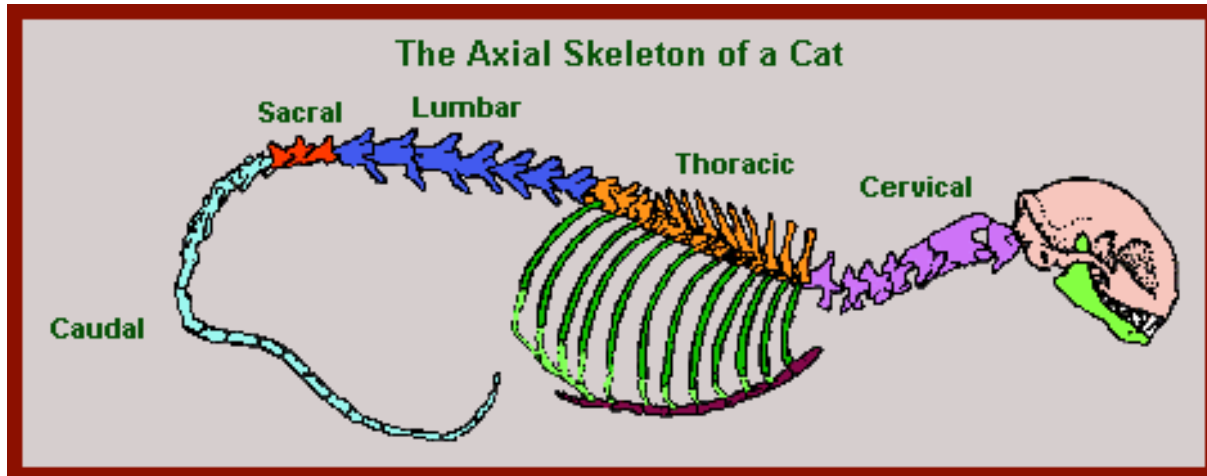
مهره های گردنی (C)



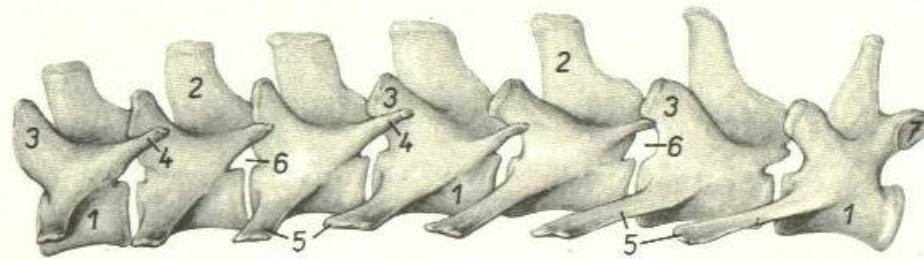
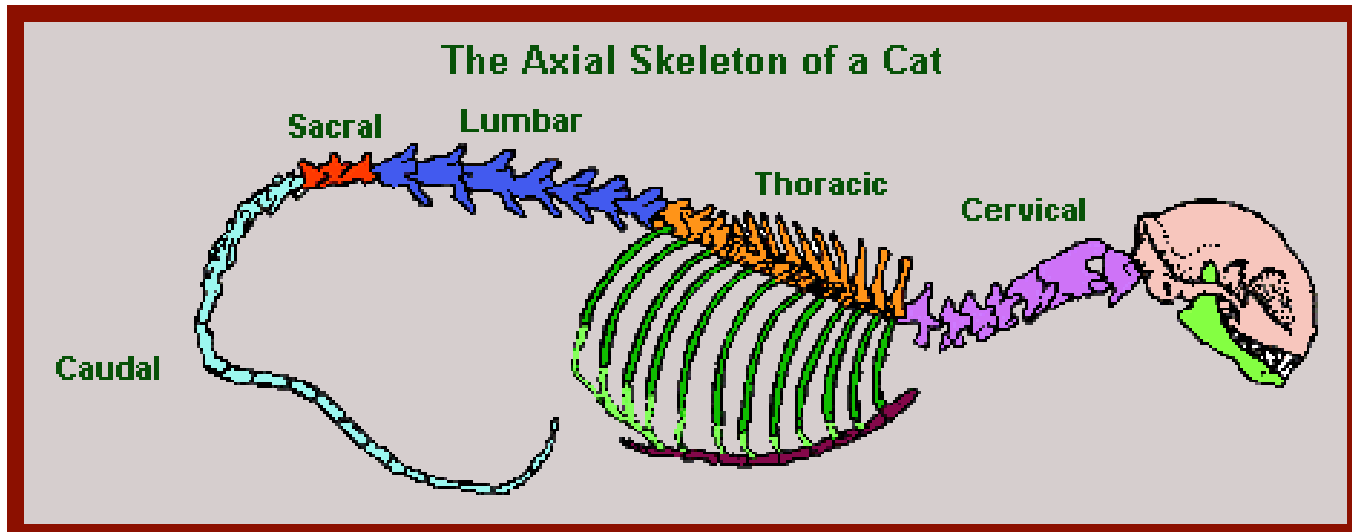
مهره های اطلس و محوری متفاوت از مهره های دیگر هستند



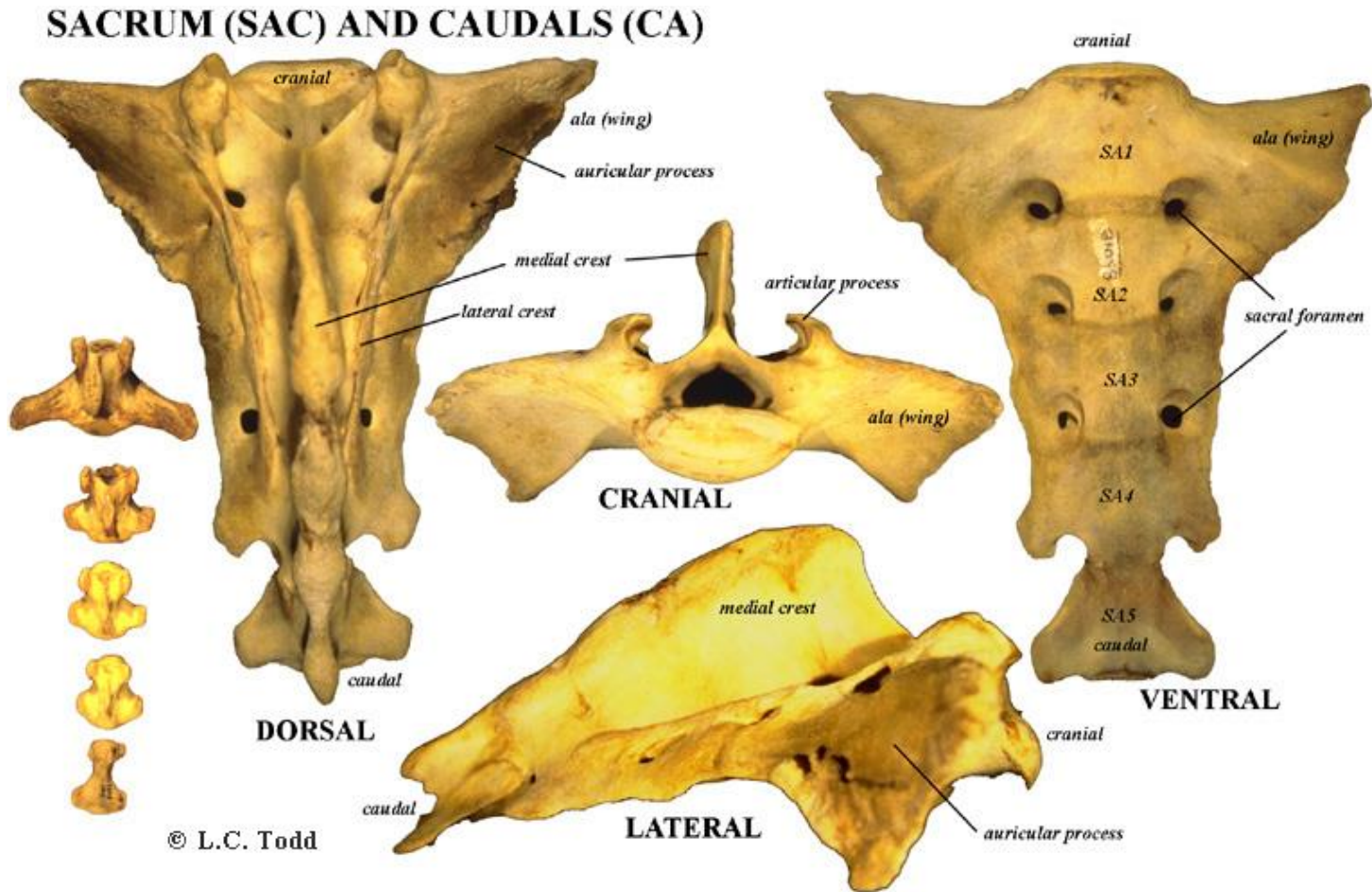
مهره های سینه ای (T)



مهره های کمری (L)

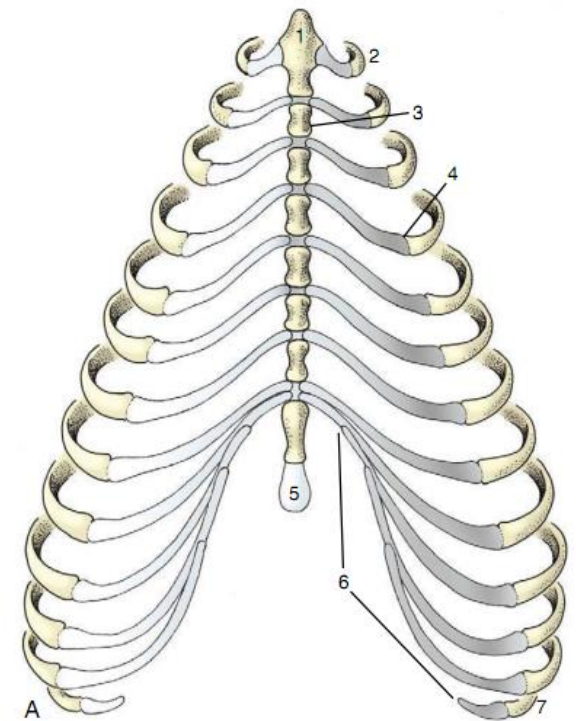
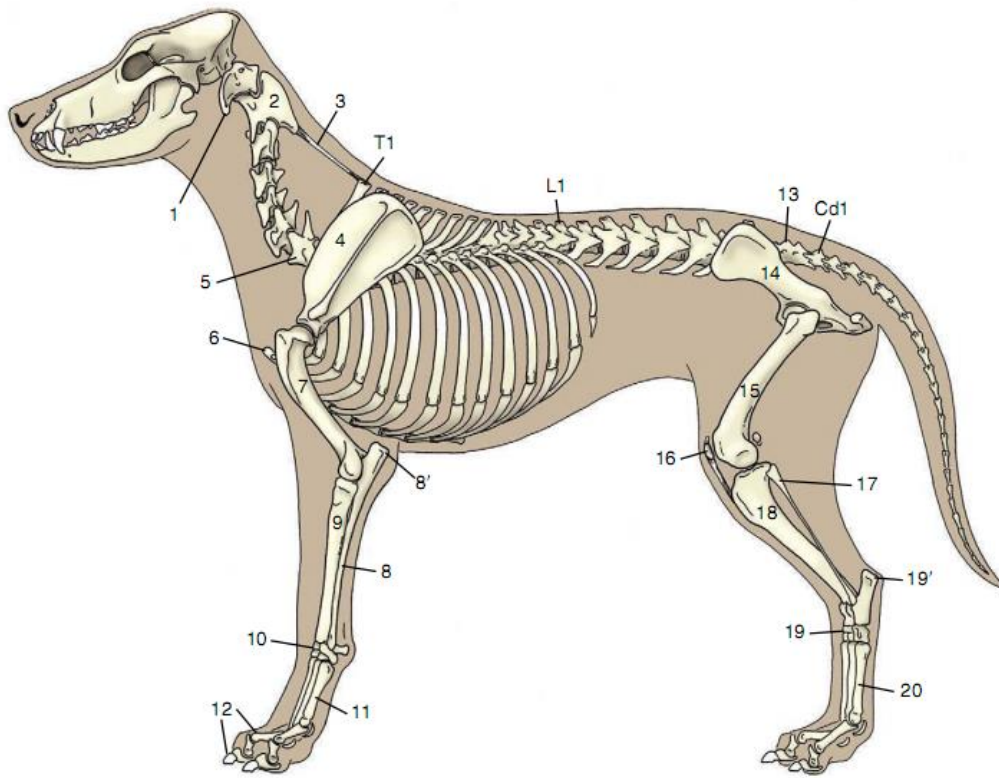


مهره های خاجی و دمی (S & Ca)



دنده ها

Ribs



ساختار های موجود در یک دنده

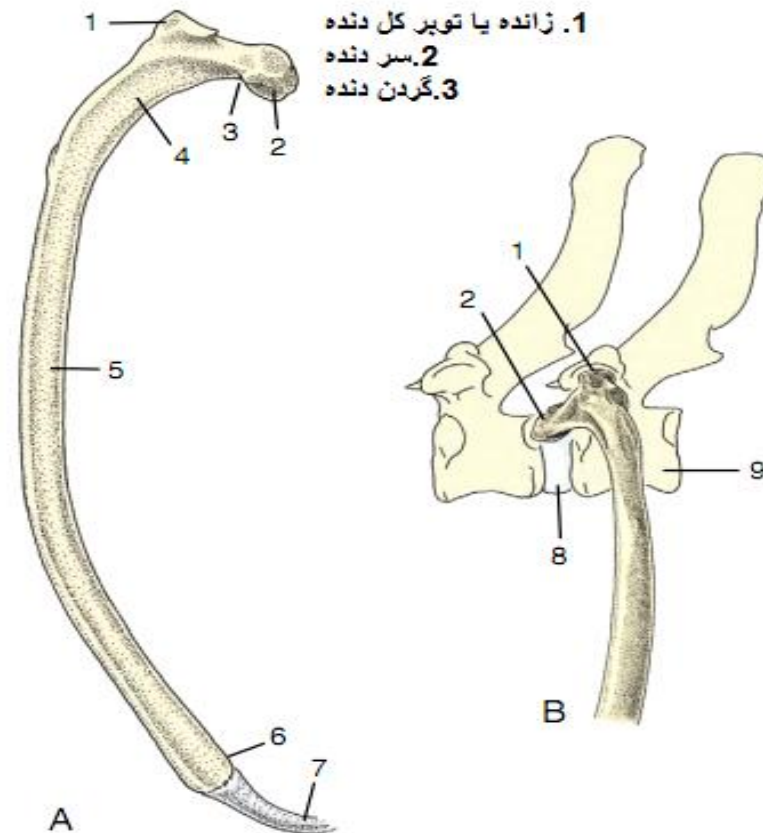
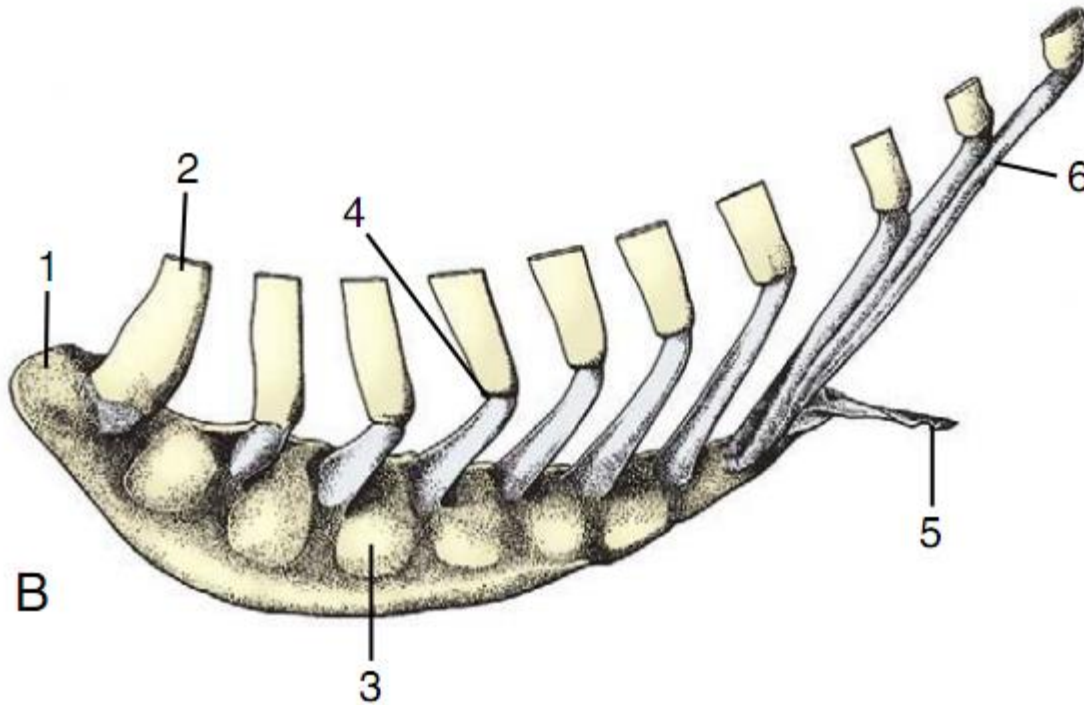


Figure 2-16 A, Left rib of a dog, caudal view. B, Left rib of a dog articulating with two vertebrae, lateral view. 1, Tubercle; 2, head; 3, neck; 4, angle; 5, body; 6, costochondral junction; 7, costal cartilage; 8, intervertebral disk; 9, vertebra of same number as rib.

جناغ

Sternum

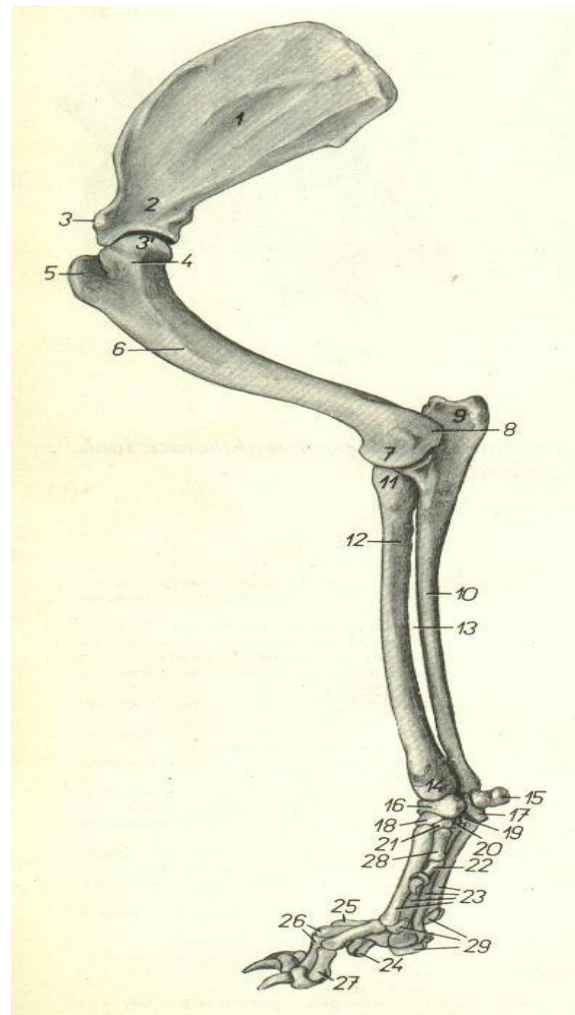


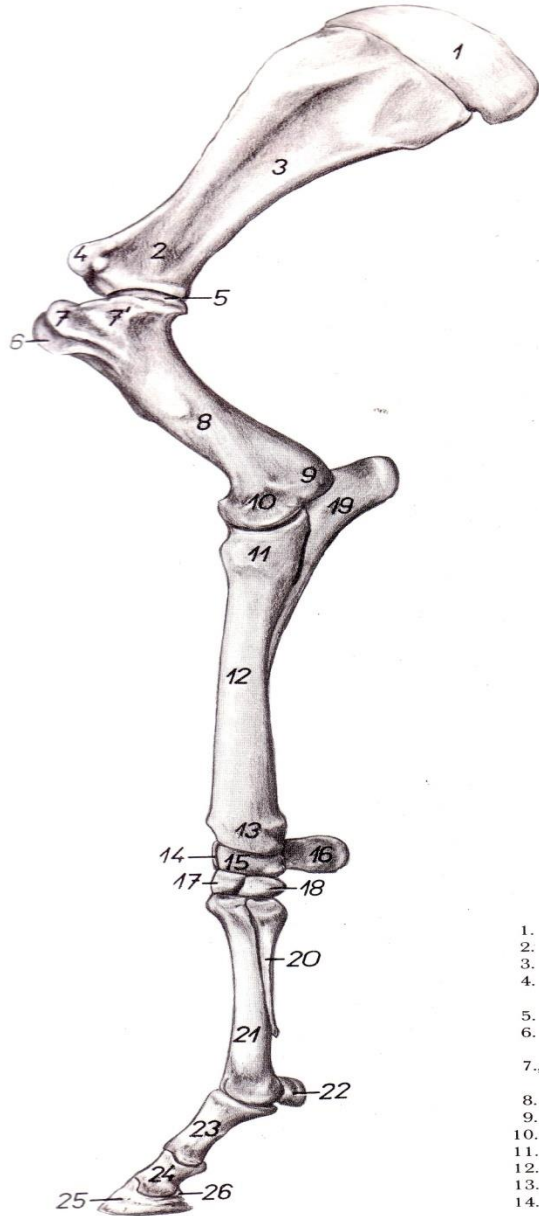
استخوان های اندام حرکتی قدامی

fore limb Bones

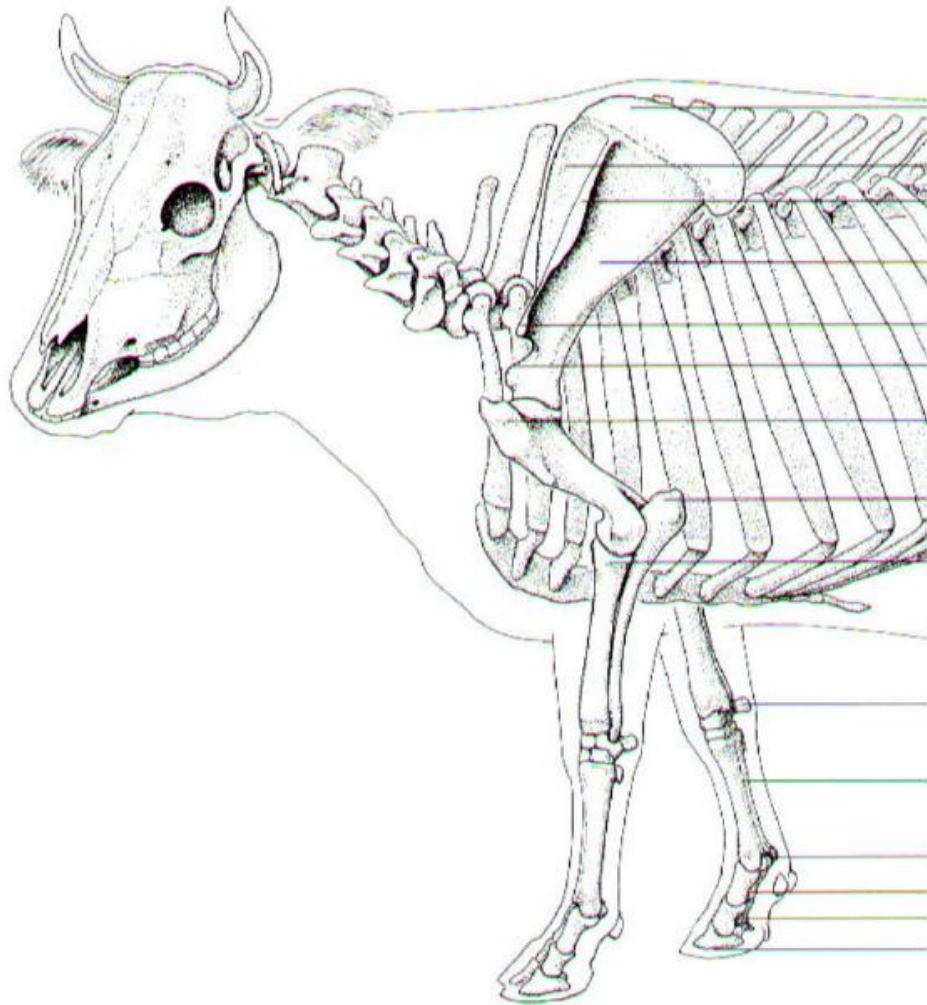
- 1-Shoulder girdle;(scapula) ■
استخوان کتف ■
- 2-Brachium(arm);Humerus ■
استخوان بازو ■
- 3-Antebrachium(forearm)Radius&Ulna ■
استخوان زند زبرین و زیرین ■
- 4-Manus ;Carpus&Metacarpus&Digits
مچ دست ، قلم دست ، انگشتان

fore limb اندام حرکتی قدامی





- 1. *car*
- 2. *colt*
- 3. *fos*
- 4. *tub*
- bei*
- 5. *caj*
- 6. *tut*
- be*
- 7., 7'.
 hu
- 8. *coi*
- 9. *epi*
- 10. *con*
- 11. *caj*
- 12. *coi*
- 13. *tro*
- 14. *os*
- ca*



Scapular cartilage

Supraspinous fossa

Spine of scapula with
tuberosity of scapular spine

Infraspinous fossa

Acromion

Supraglenoid tubercle

Greater tubercle of humerus

Olecranal tuberosity

Head of radius

Accessory carpal bone

3rd and 4th metacarpal bone

Proximal sesamoid bones

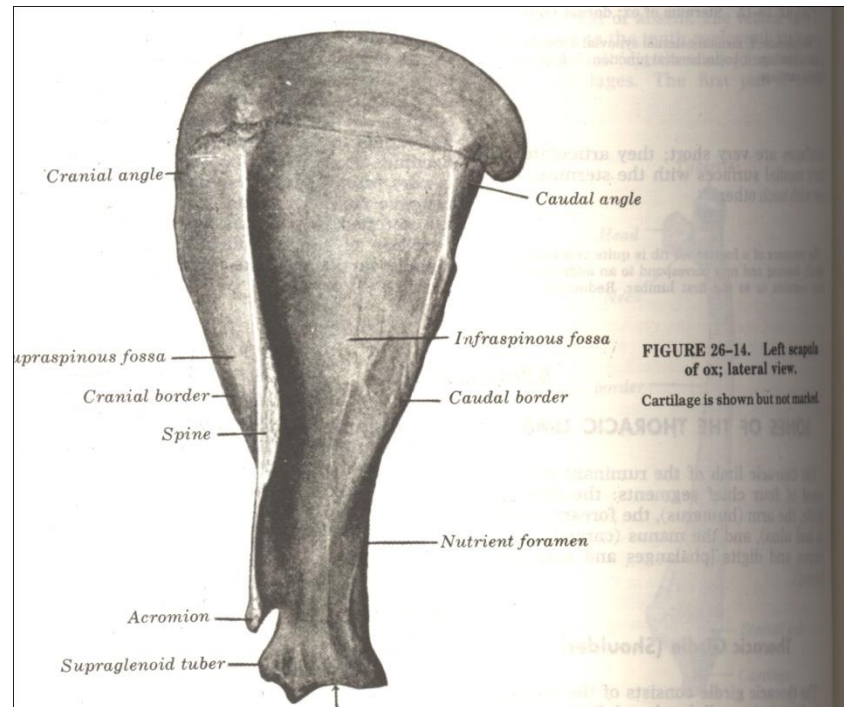
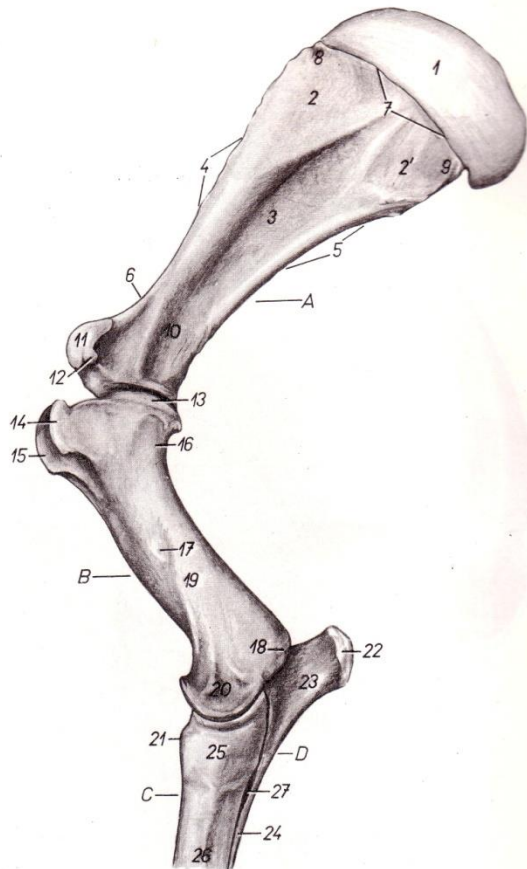
Proximal phalanx

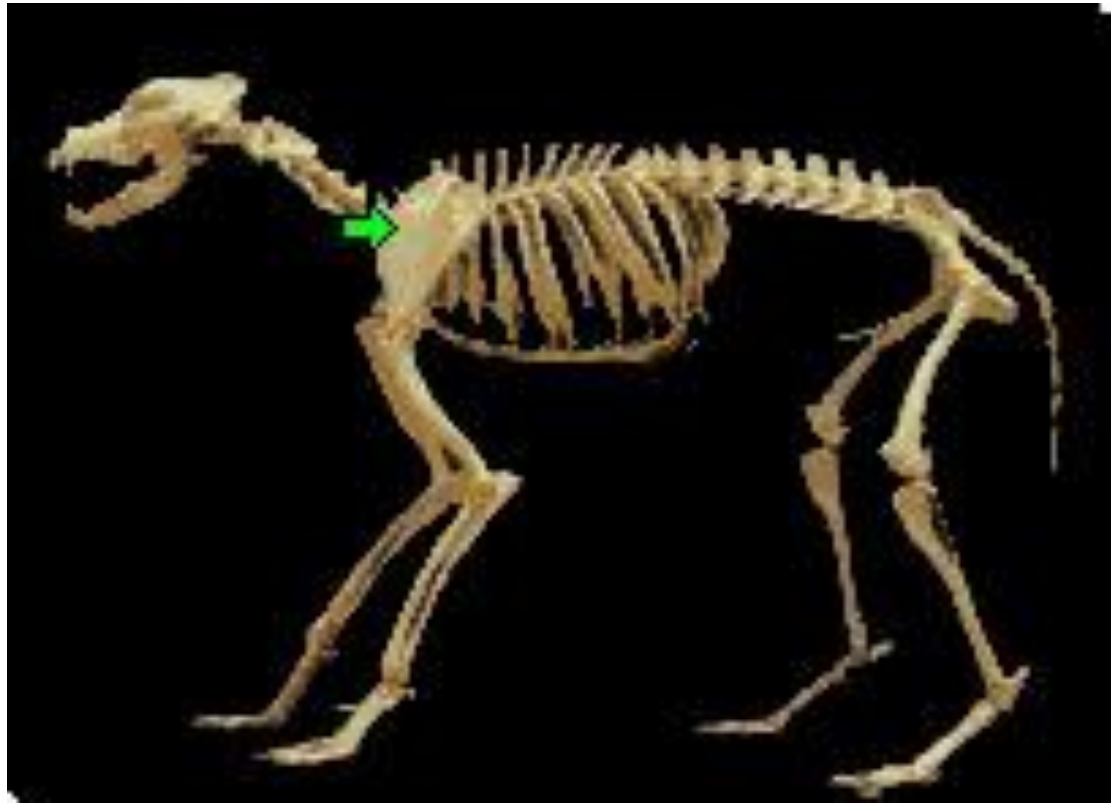
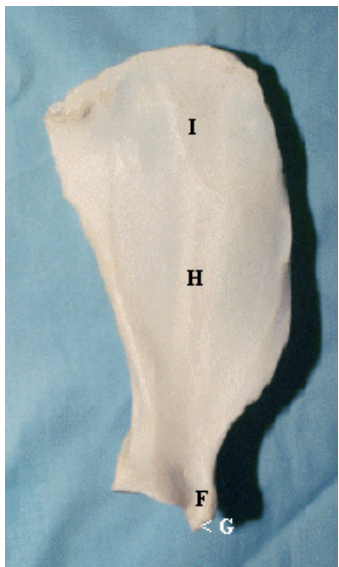
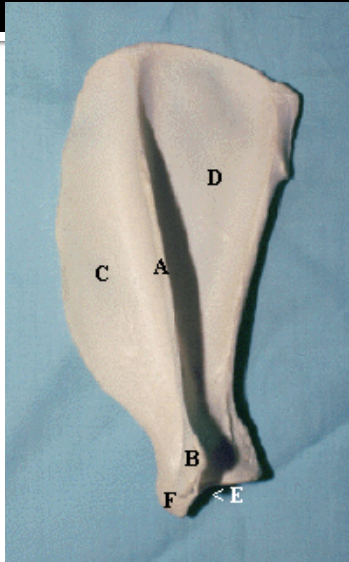
Middle phalanx

Distal phalanx

كتف

Scapula







بازو

Humerus

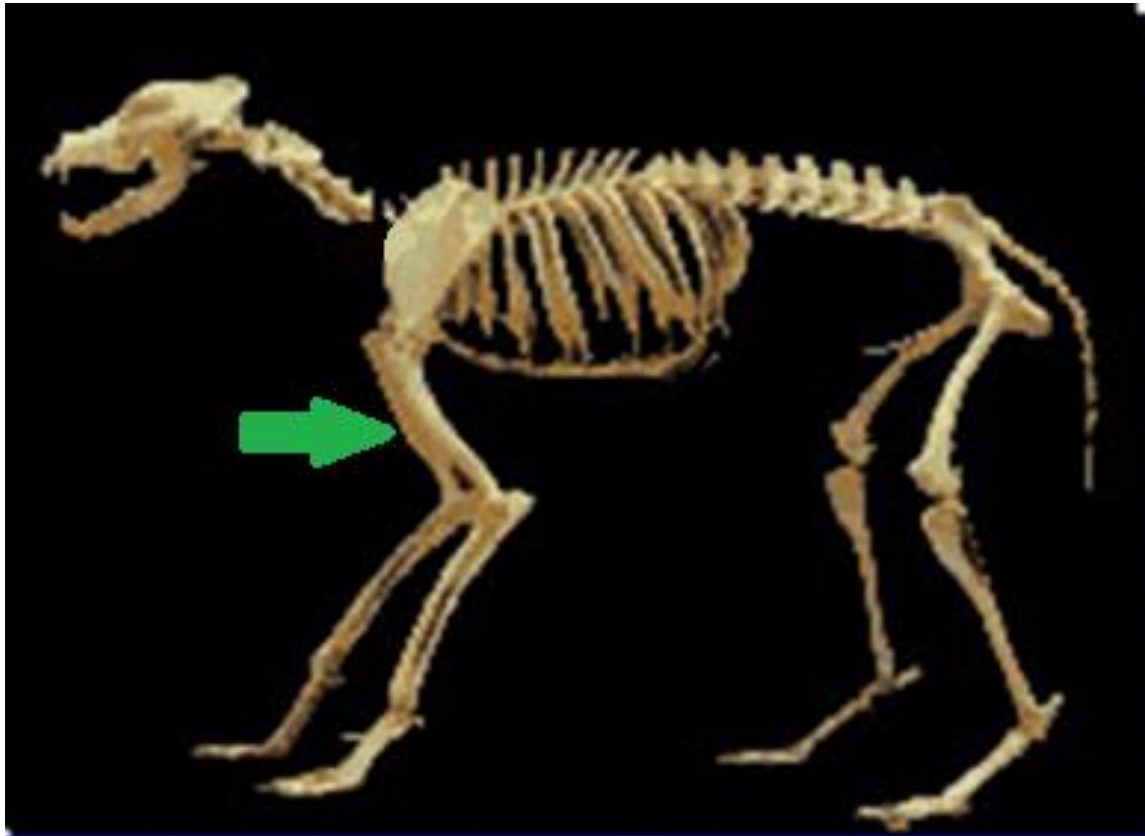


FIGURE 26-15. Left humerus of ox; lateral view.

1, Head; 2, neck, 3, 3', major (lateral) tuberosity; 4, rough prominence for attachment of infraspinatus tendon; 5, deltoid tuberosity; 6, radial fossa; 7, capitulum; 8, lateral epicondyle; 9, medial epicondyle; 10, olecranon fossa.

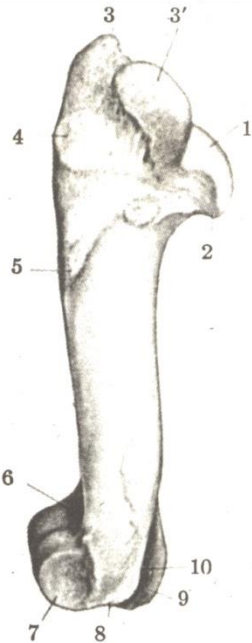


FIGURE 26-15.

FIGURE 26-16. Left humerus of ox; cranial view.

1, Major (lateral) tuberosity; 2, minor (medial) tuberosity; 3, intertuberal groove; 4, rough prominence for attachment of infraspinatus tendon; 5, deltoid tuberosity; 6, teres major tubercle; 7, (musculospiral) groove for brachialis; 8, radial fossa; 9, trochlea; 10, capitulum.

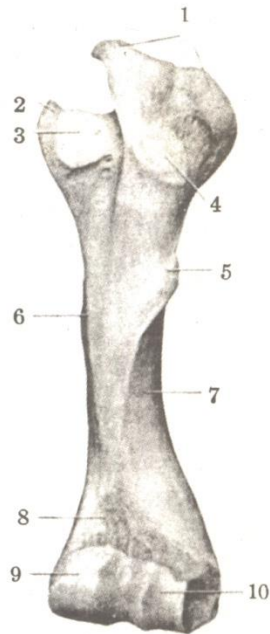
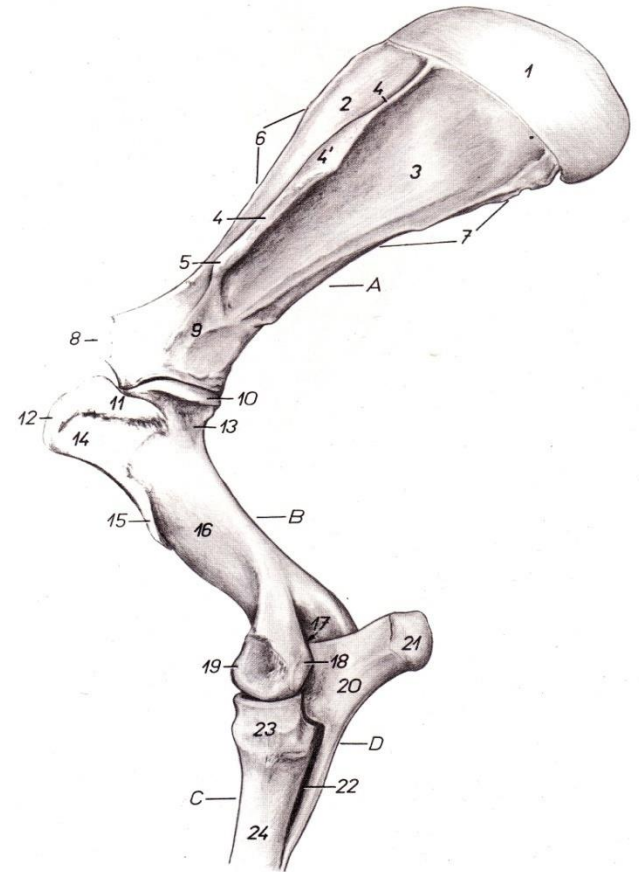
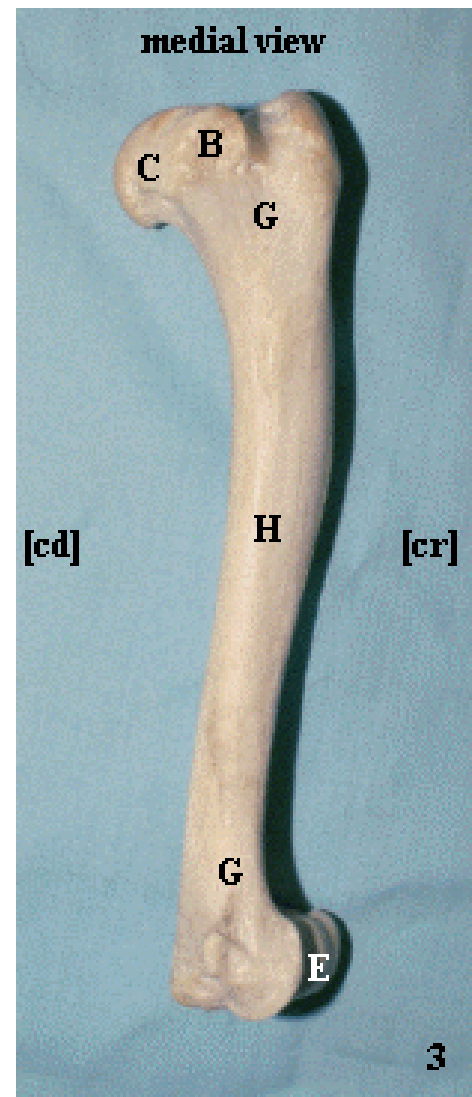
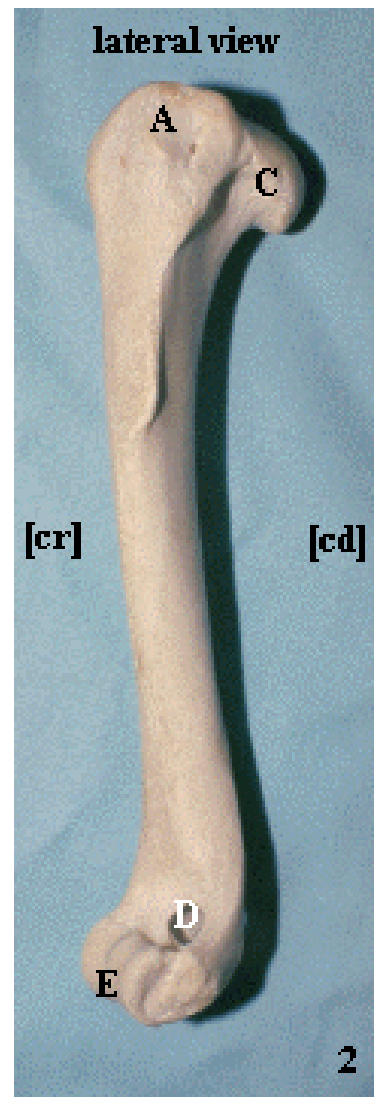
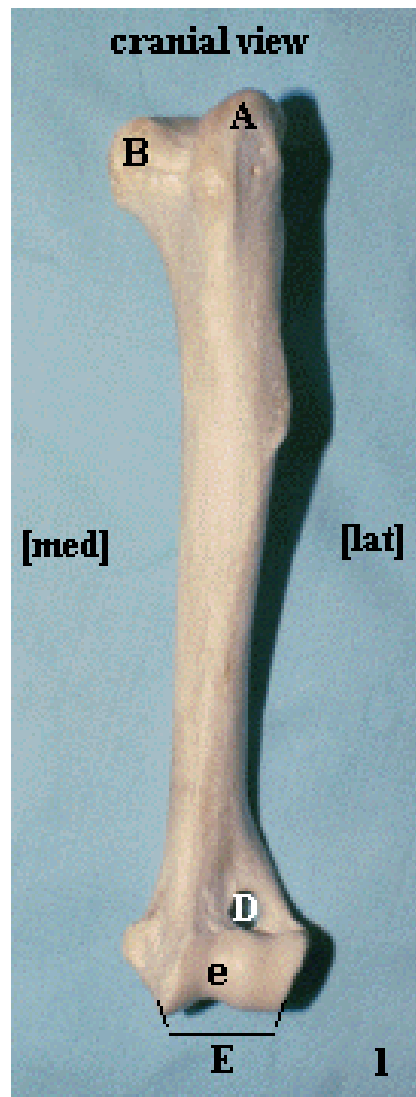
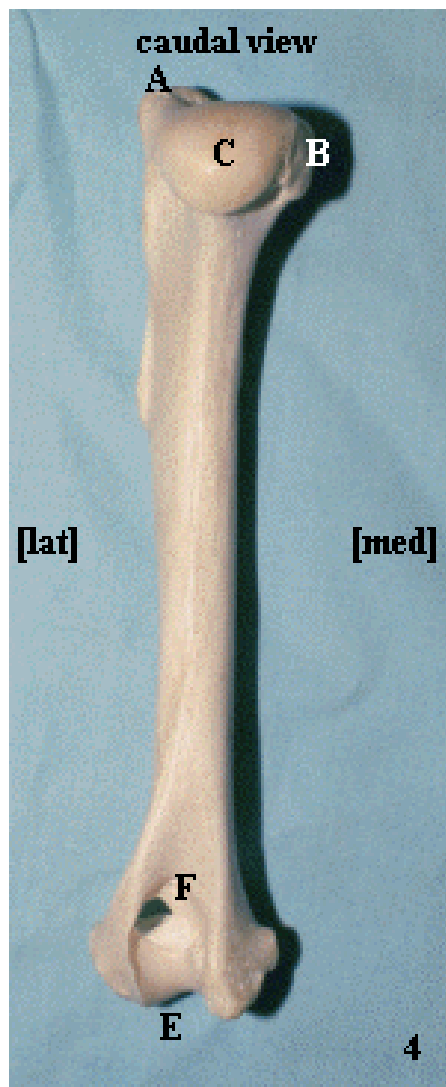
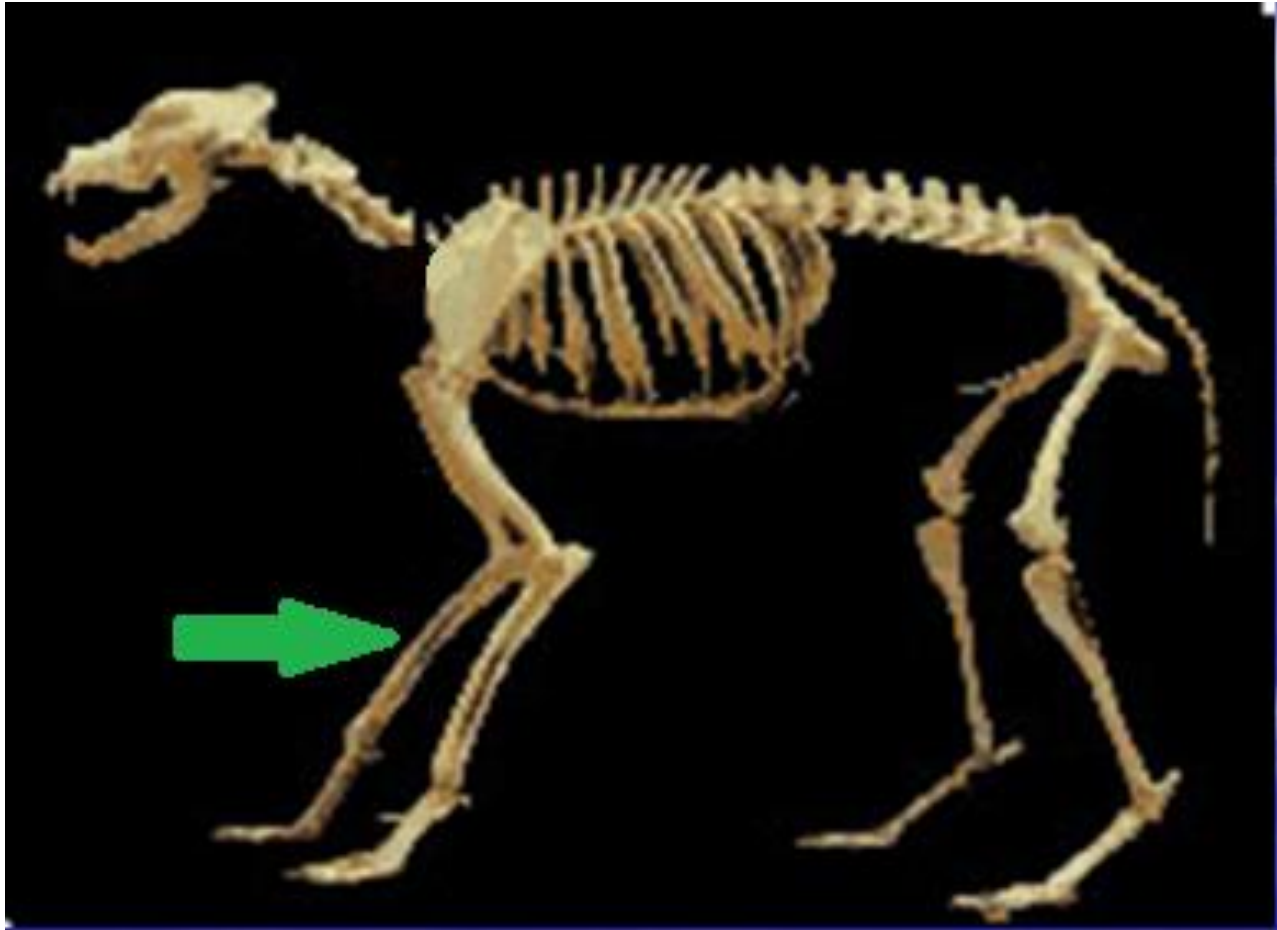


FIGURE 26-16.





Radius & Ulna زند زیرین و زند زیرین



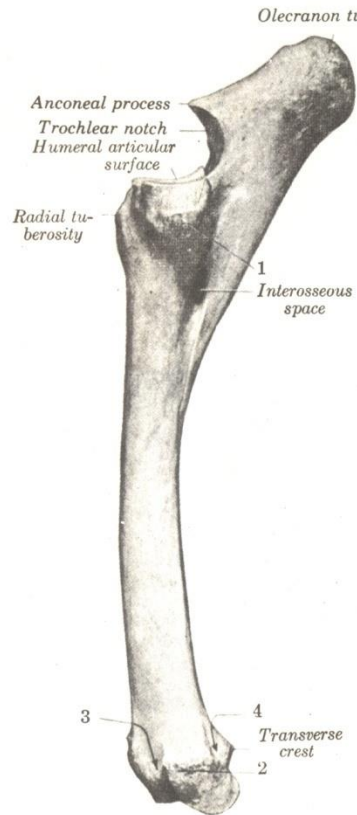


FIGURE 15-41. Left radius and ulna of horse; lateral view.

- 1, Tuberosity for attachment of lateral collateral ligament of elbow joint, and extensor digitorum communis and lateralis;
- 2, tuberosity for attachment of lateral collateral ligament of carpal joint;
- 3, groove for common digital extensor tendon;
- 4, groove for lateral digital extensor tendon.

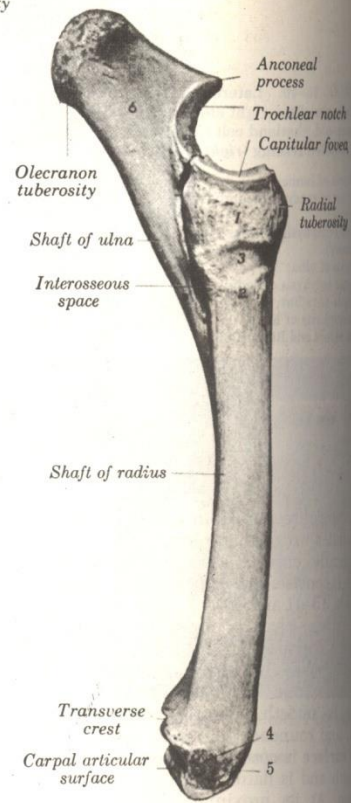
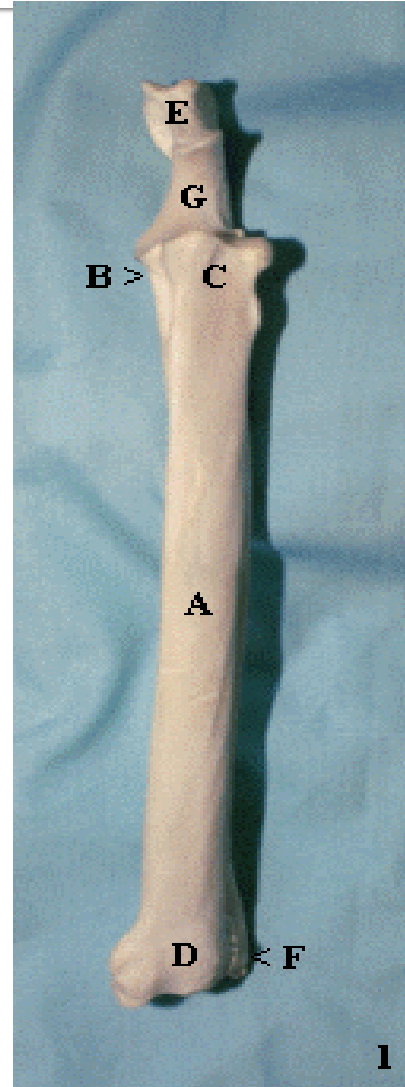
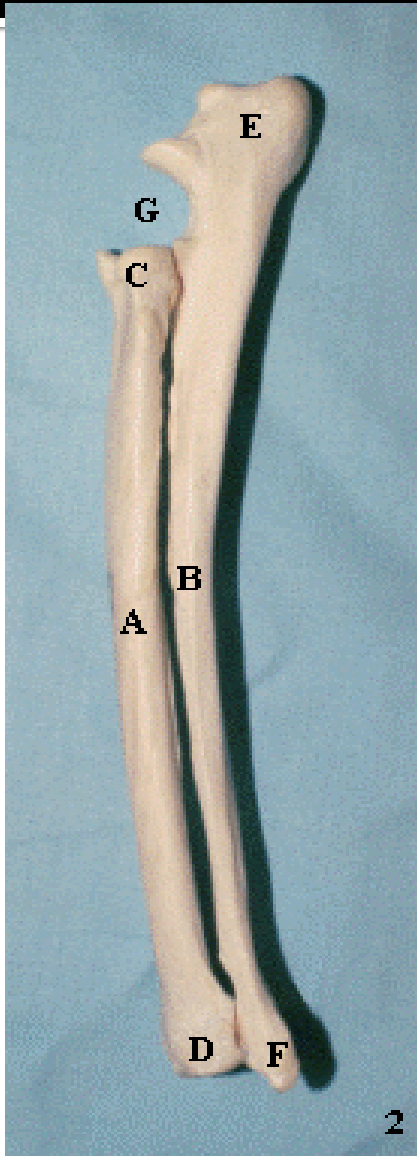
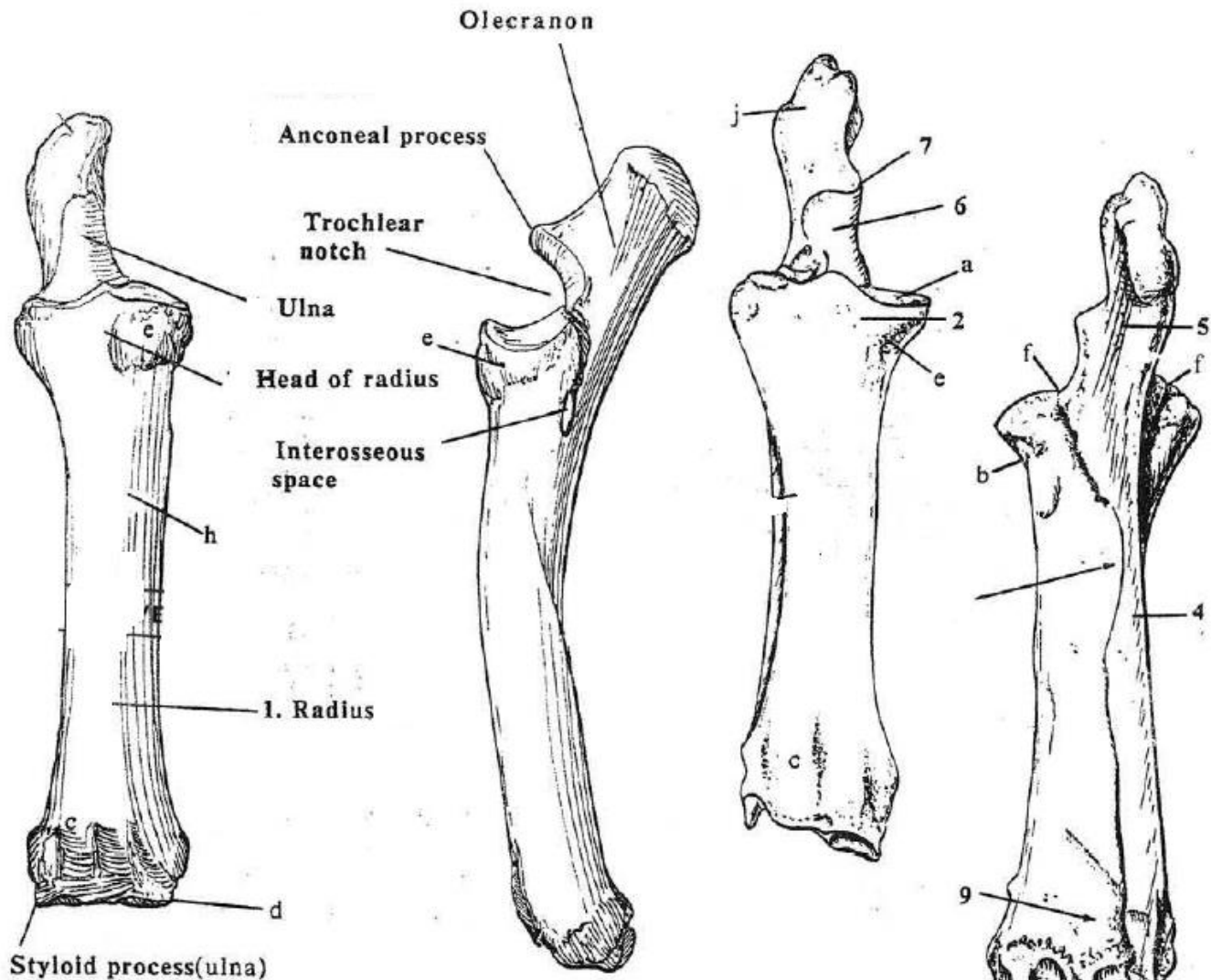


FIGURE 15-42. Left radius and ulna of horse; medial view.

- 1, Tuberosity for attachment of short part of medial collateral ligament of elbow;
- 2, prominence for long part of same;
- 3, groove for end of brachialis muscle;
- 4, tuberosity for attachment of medial collateral ligament of carpal joint;
- 5, oblique groove for tendon of abductor digiti I longus;
- 6, olecranon.

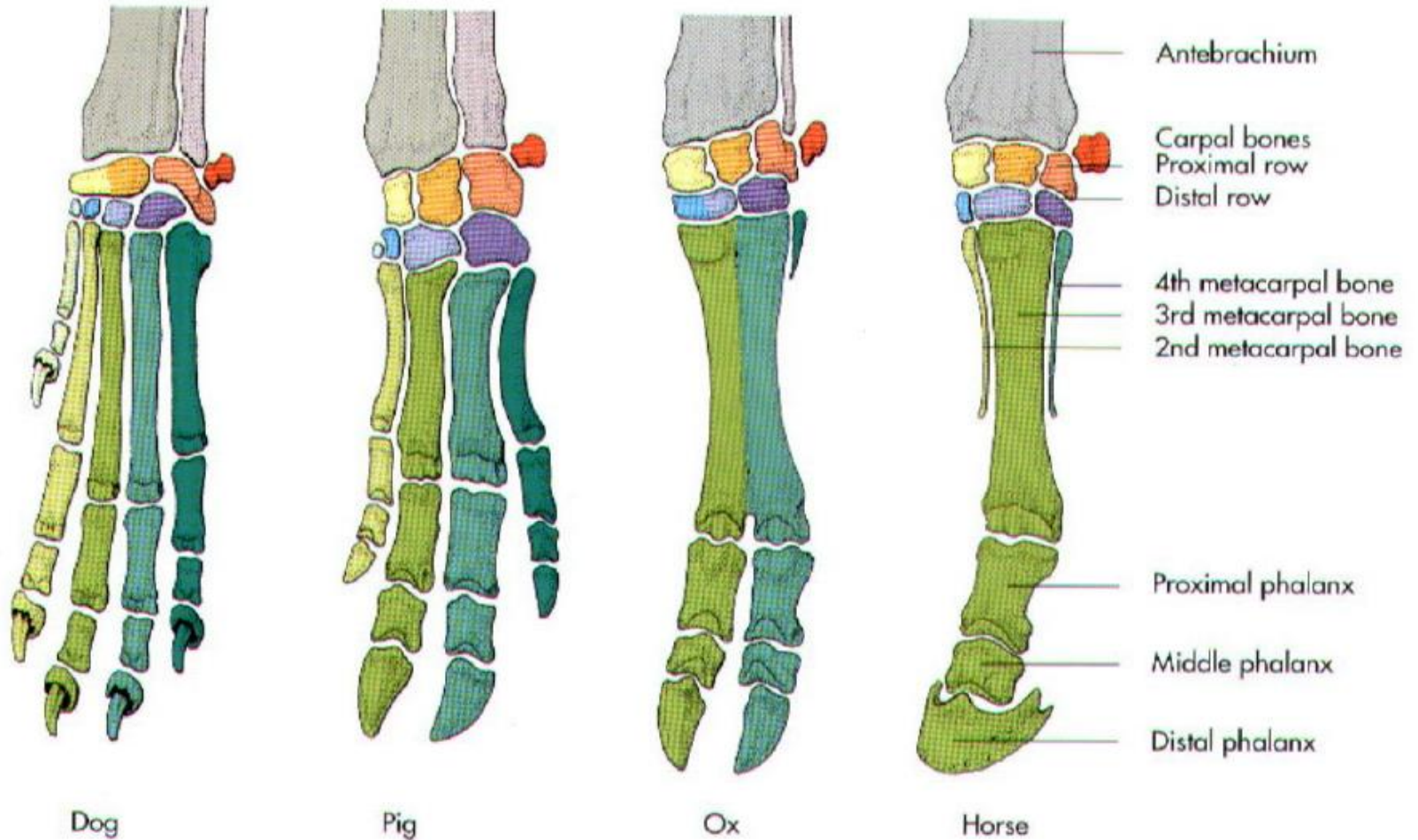






Carpal & Metacarpal bones

استخوان های مچ دست و قلم دست



انگشتان

Digits

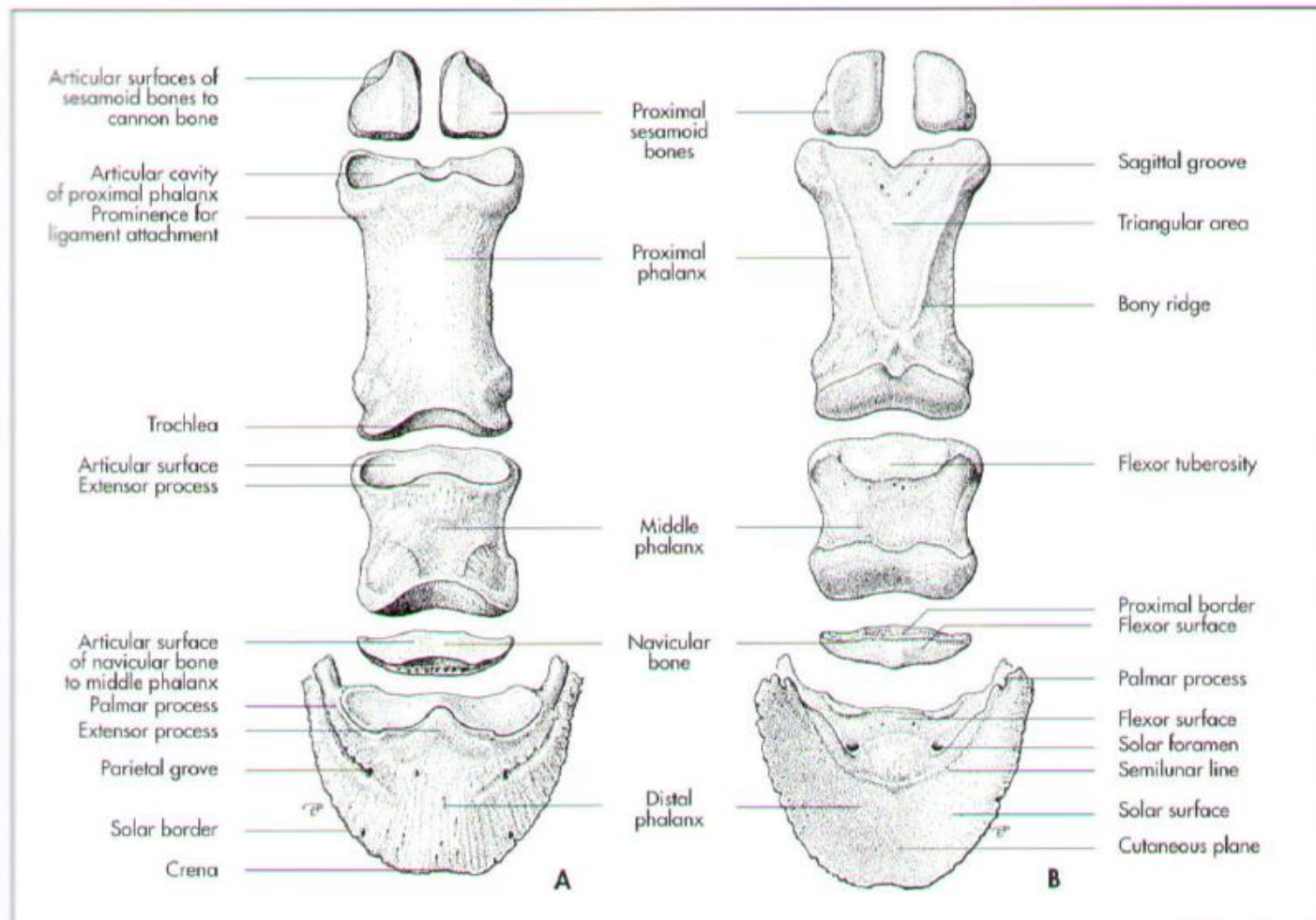
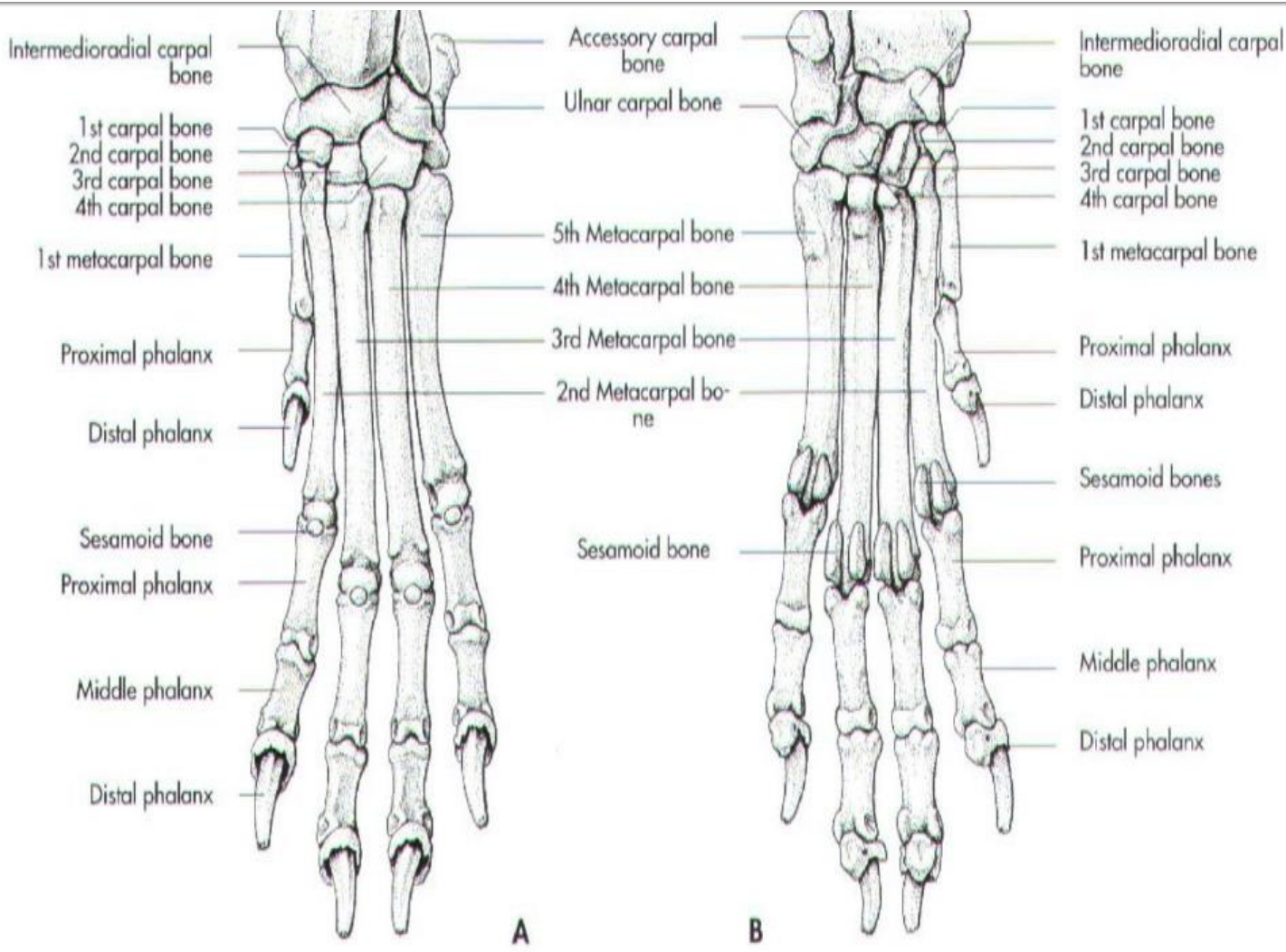
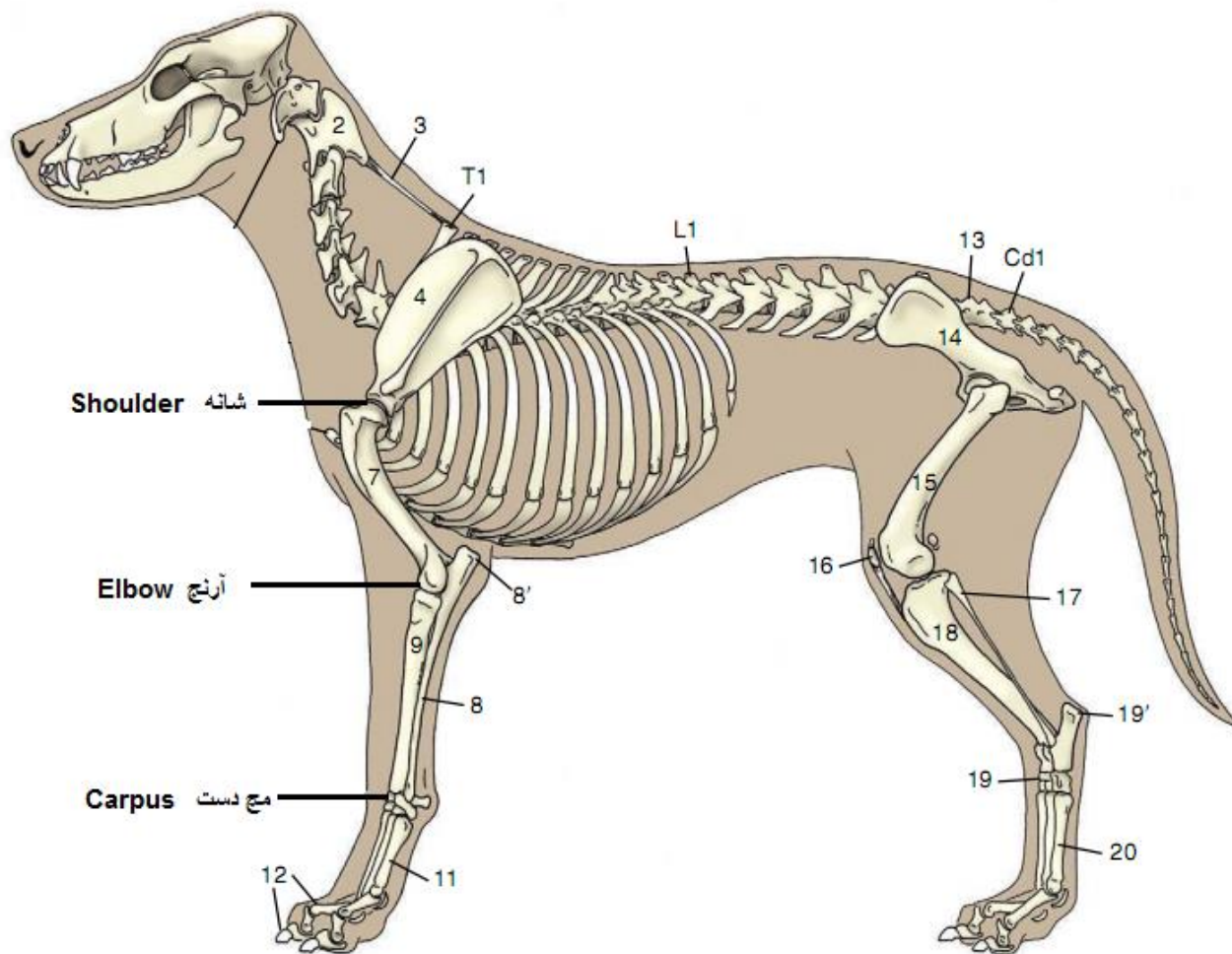
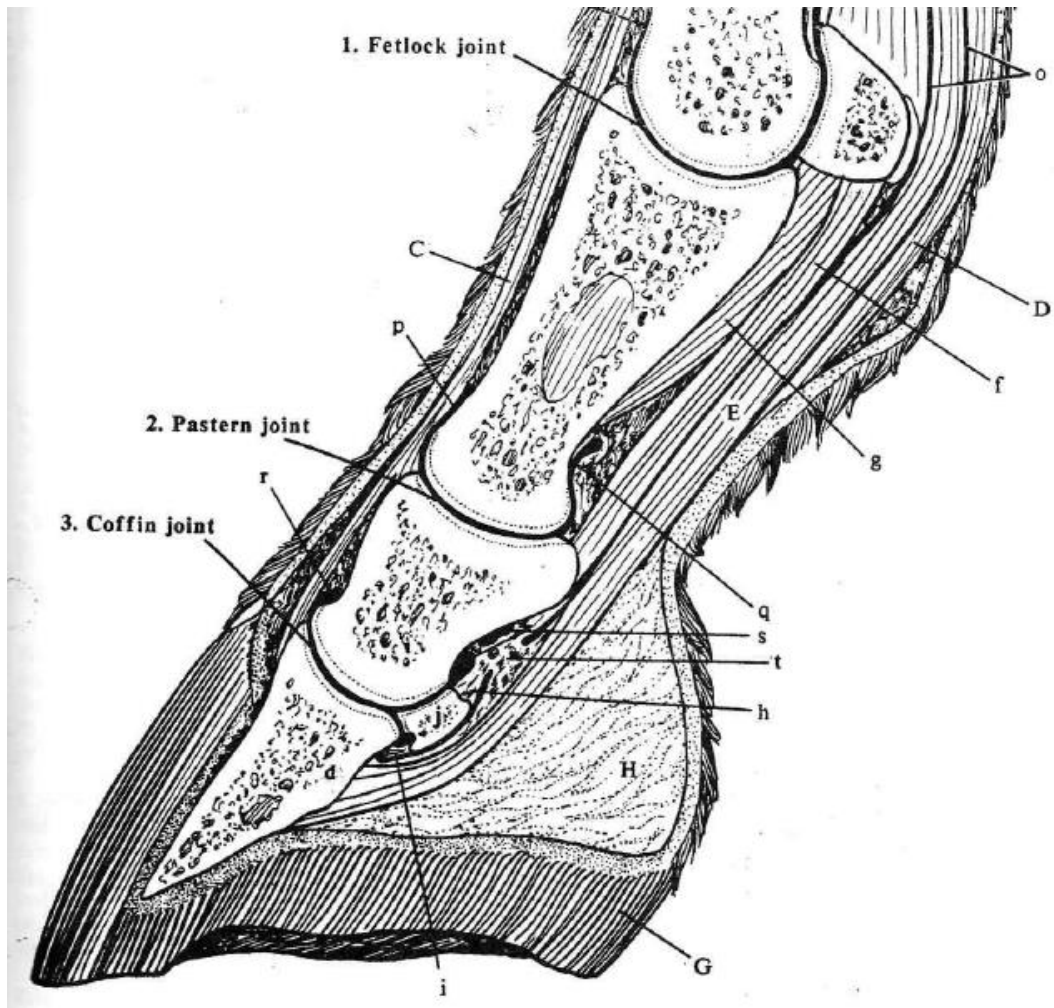


Fig. 3-21. Left digital skeleton of the horse (schematic, A dorsal and B palmar aspect).



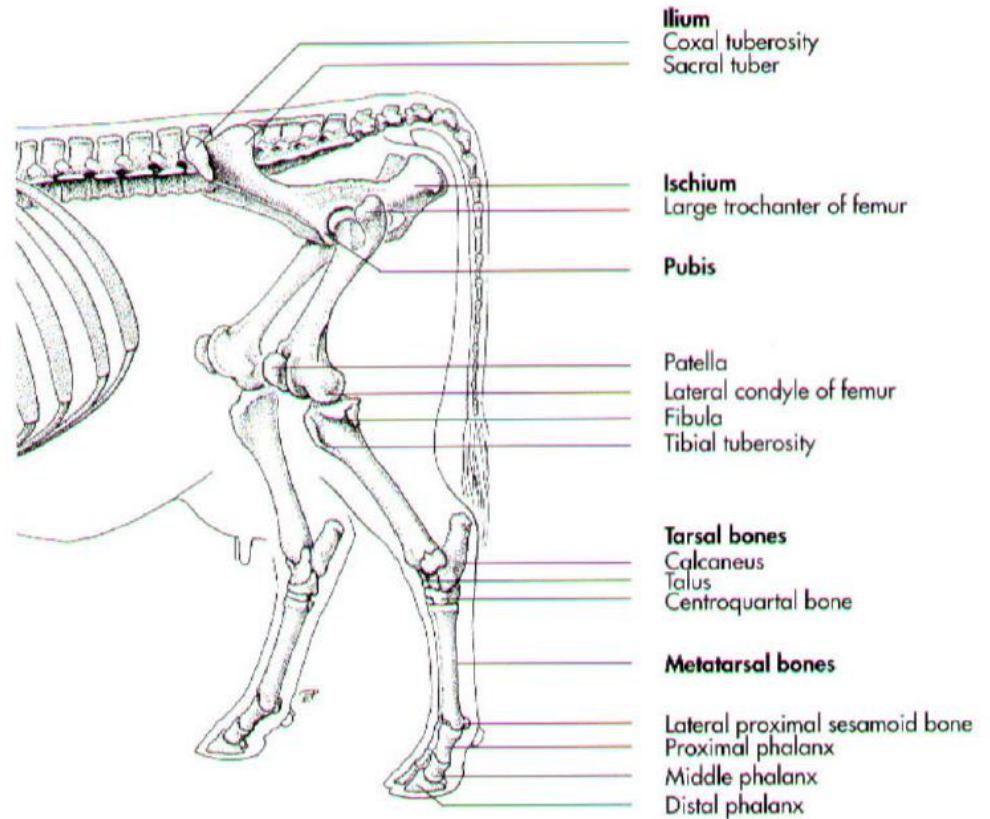
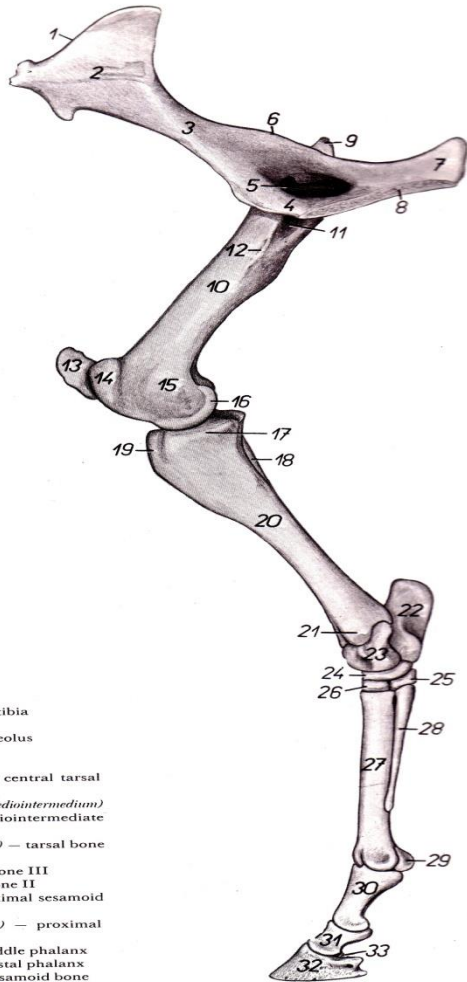
مفاصل اندام حرکتی قدامی





استخوان های اندام حرکتی خلفی

Hind limb bones



Hip bone or os coxarum

استخوان لگن

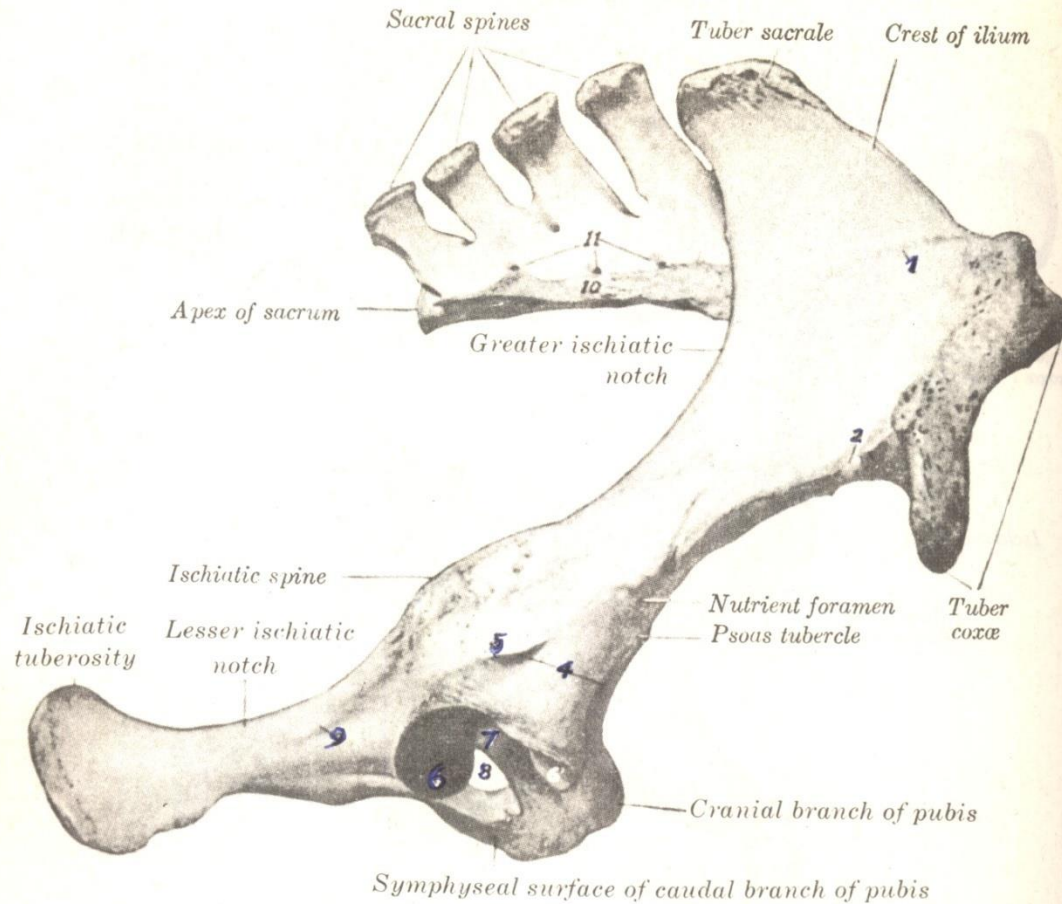


FIGURE 15-72. Right os coxae and sacrum of horse; right lateral view.

1, Gluteal line; 2, impression of iliolumbar a.; 3, impression of iliofemoral a.; 4, depressions for attachments of tendons of origin of rectus femoris and capsularis mm. are attached; 5, crest to which lateral tendon of rectus femoris and capsularis mm. are attached; 6, 6', articular surface of acetabulum (*facies lunata*); 7, acetabular fossa; 8, obturator foramen; 9, line for attachment of gemellus m.; 10, lateral part of sacrum; 11, dorsal sacral foramina.

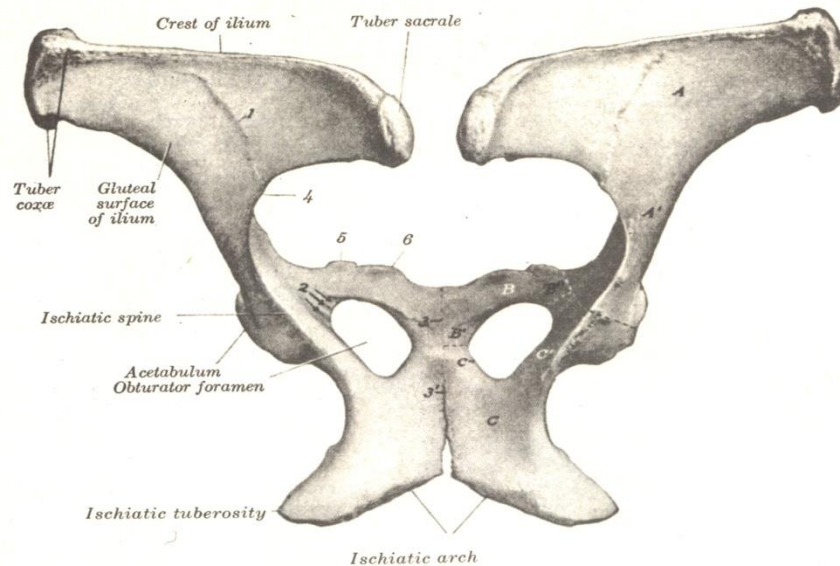


FIGURE 15-70. Ossa coxarum of horse; dorsal view.

A, Wing; A', body of ilium; B, cranial (acetabular) and B', caudal (symphyseal) branch of pubis; B'', body of pubis; C, tabula; C', body (formerly acetabular branch or shaft), C'', (symphyseal) branch of ischium; 1, gluteal line; 2, grooves for obturator n. and vessels; 3, pubic symphysis; 3', ischiatic symphysis; 3+3', forms the pelvic symphysis; 4, greater ischiatic notch; 5, iliopubic eminence; 6, pubic tubercle. Dotted lines indicate primitive separation of three bones.

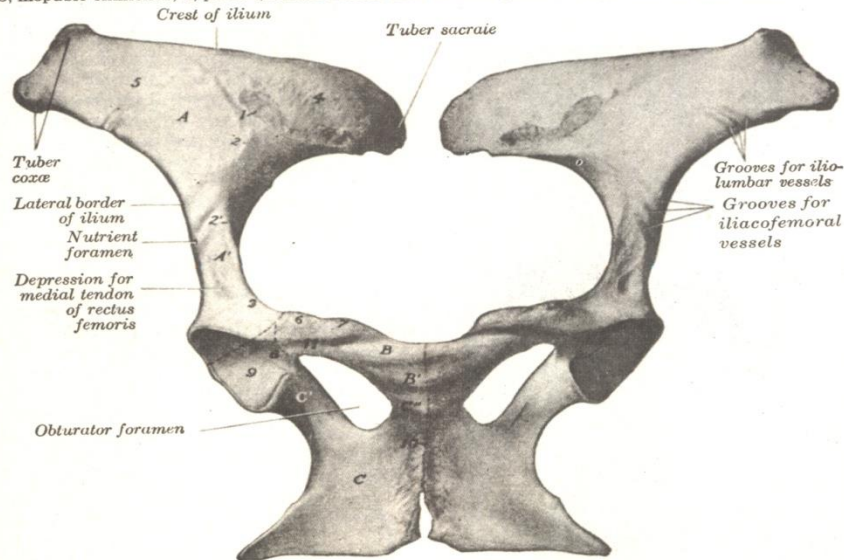
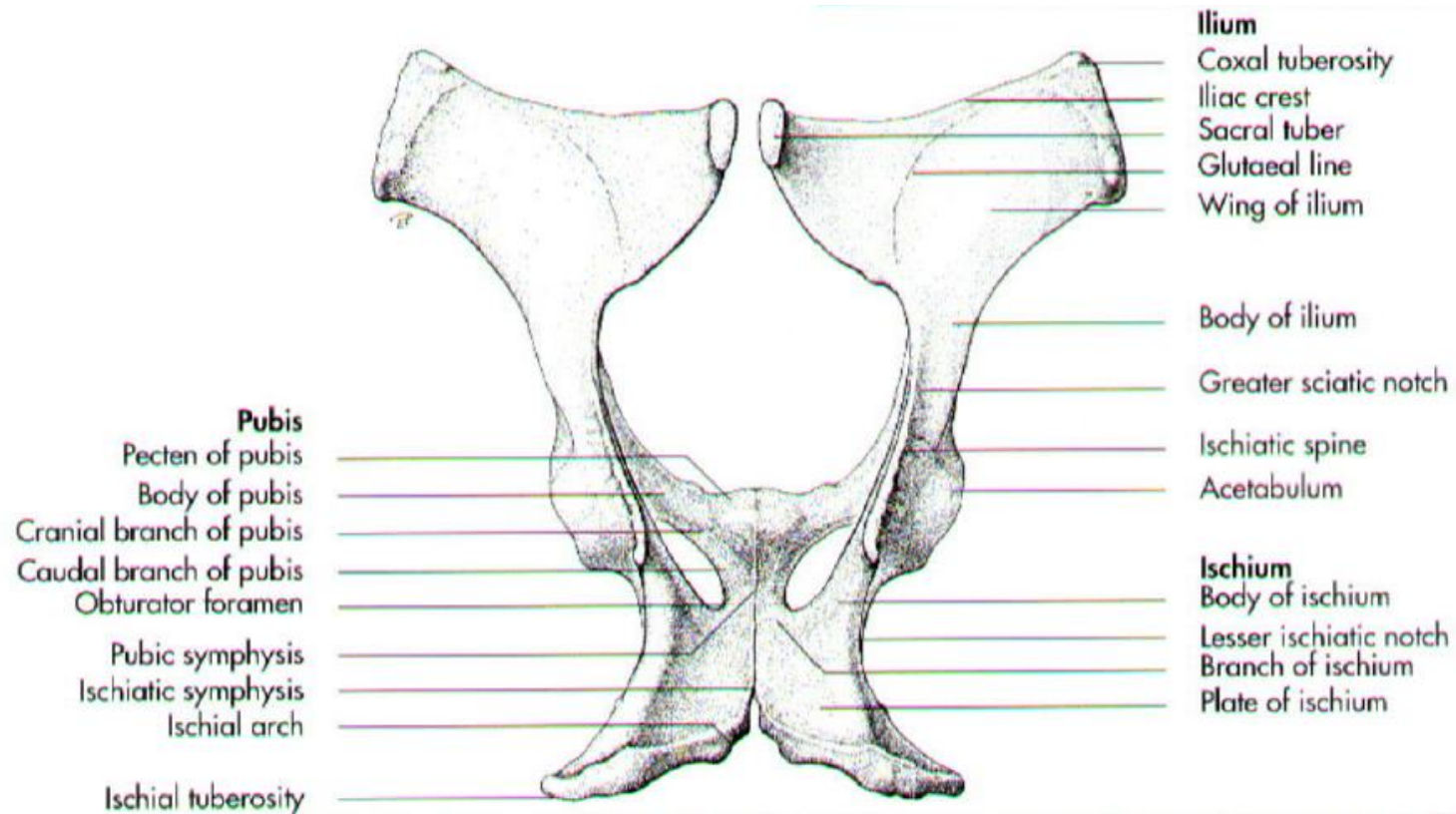


FIGURE 15-71. Ossa coxarum of mare; ventral view.

A, Wing, A', body of ilium; B, cranial (acetabular) branch, B', caudal (symphyseal) branch, of pubis; C, tabula; C', body (formerly acetabular branch, shaft), C'', (symphyseal) branch of ischium; 1, auricular surface; 2+3, arcuate (iliopectineal) line; 2', psoas tubercle; 4, iliac tuberosity; 5, iliac part of sacropelvic surface of ilium; 6, iliopubic eminence; 7, pubic tubercle; 8, acetabular fossa; 9, articular surface of acetabulum (facies lunata); 10, pelvic symphysis; 11, pubic groove. Dotted lines indicate primitive division of os coxae.

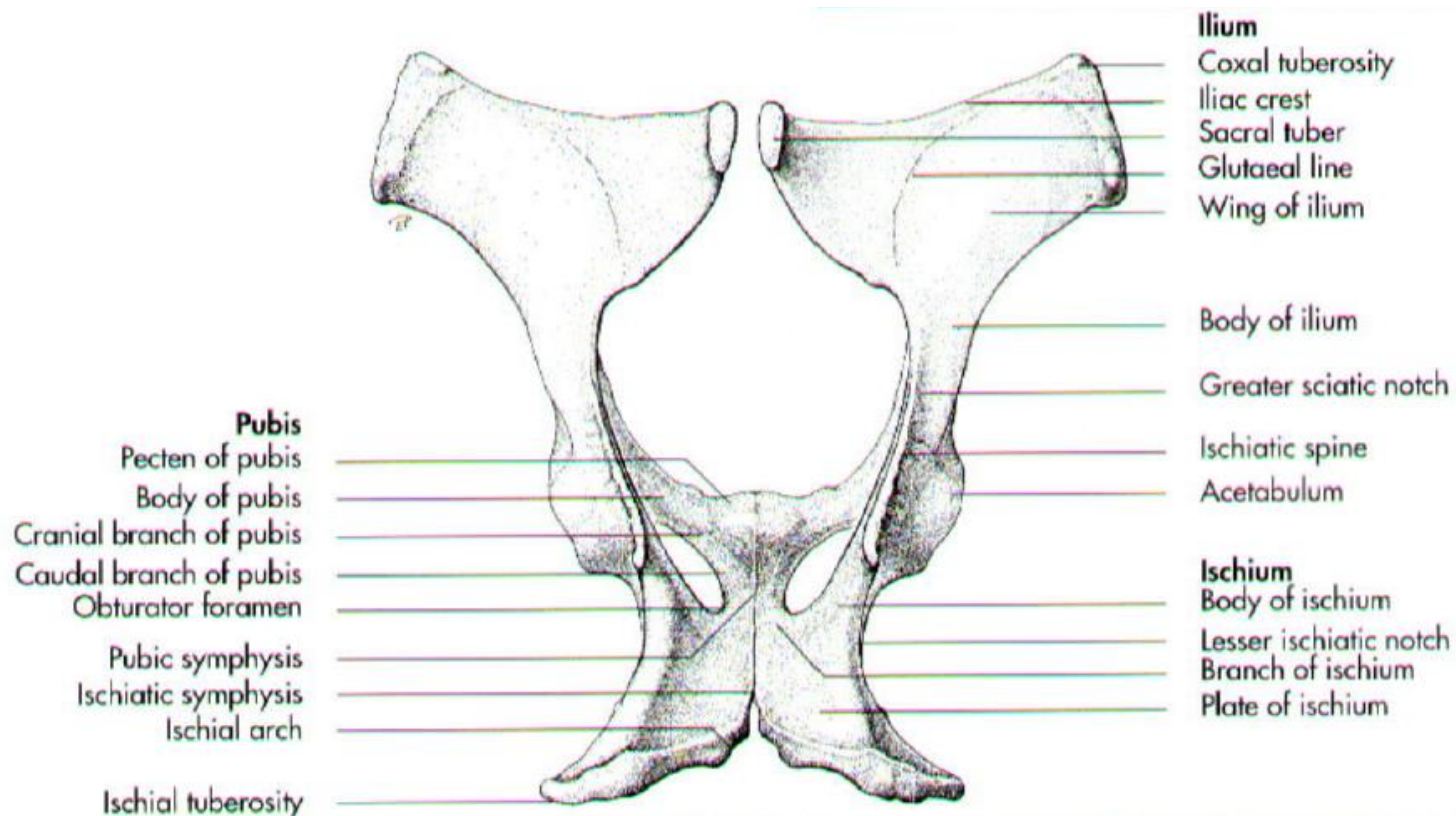
Ilium

ایلیوم یا خاصره



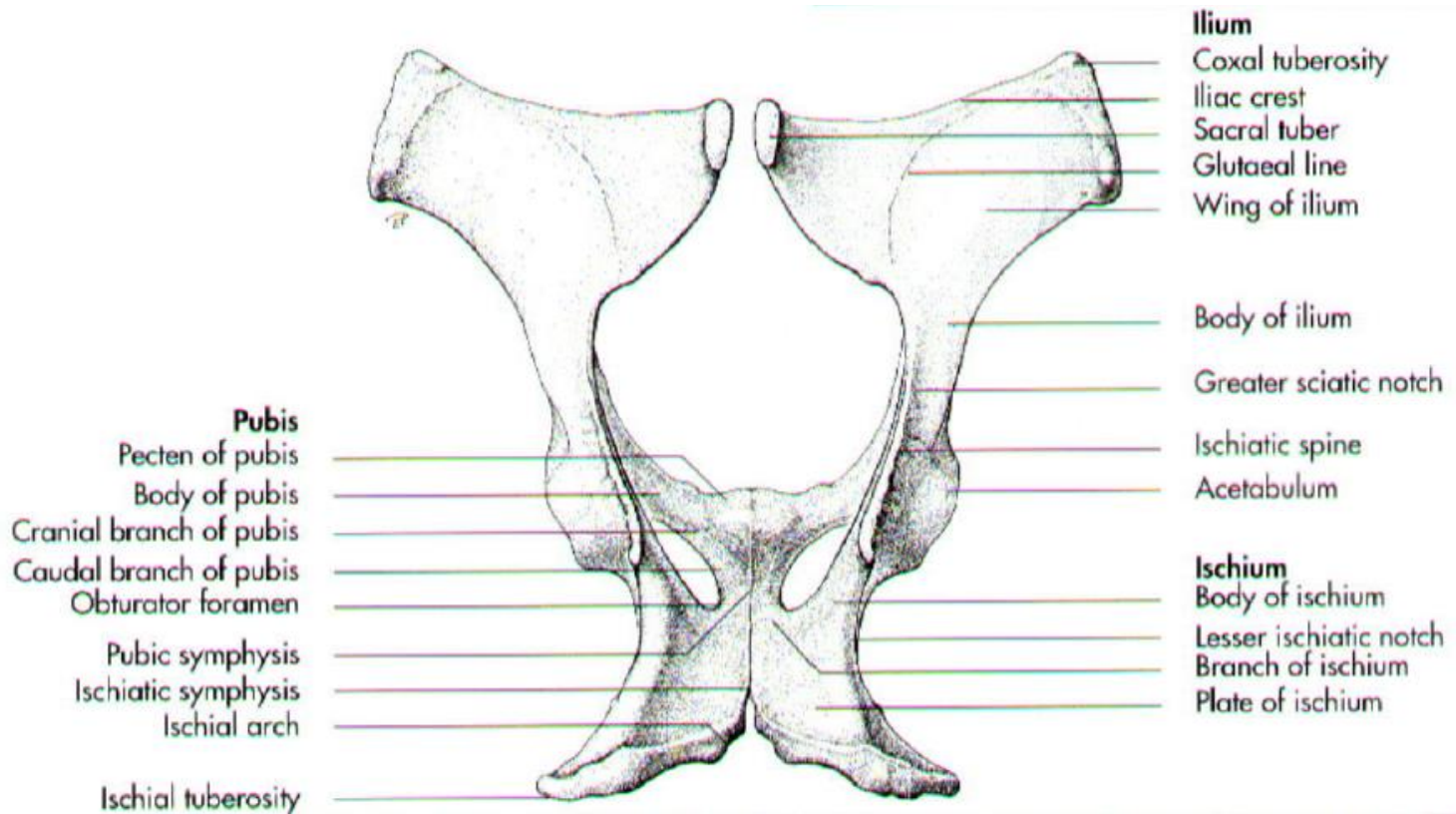
استخوان شرمگاهی

Pubic



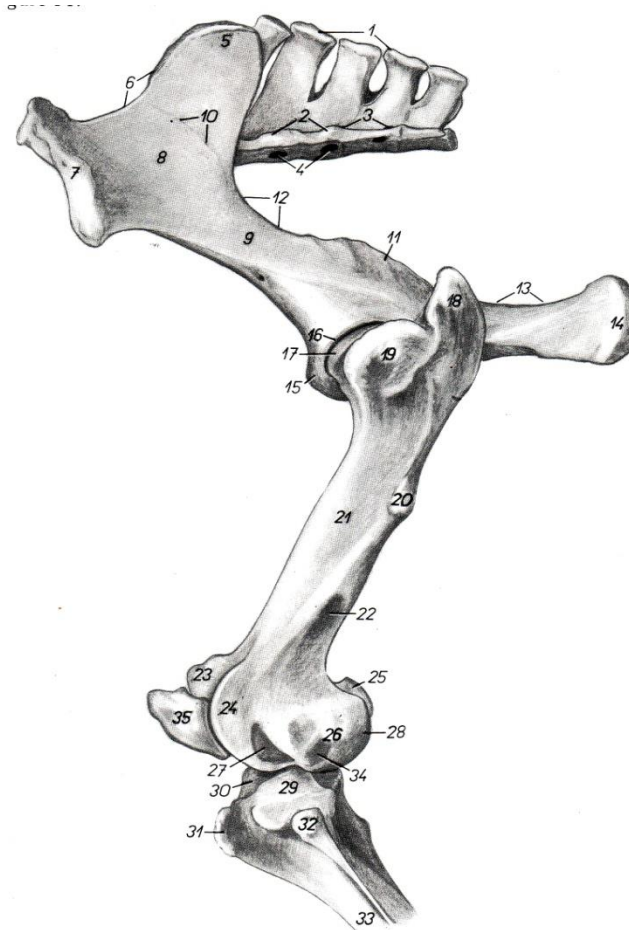
Ischium

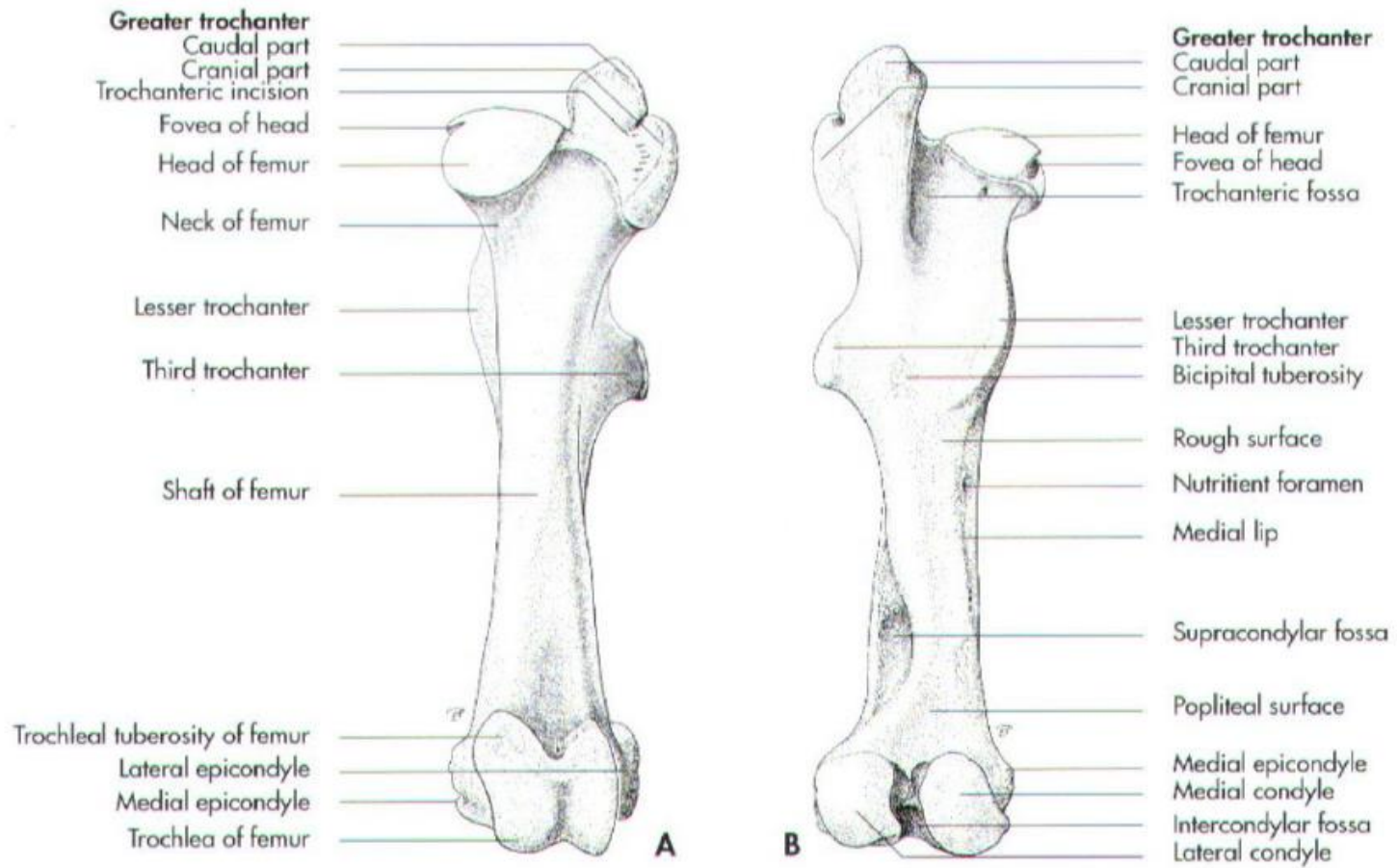
استخوان نشیمن گاهی



Femur

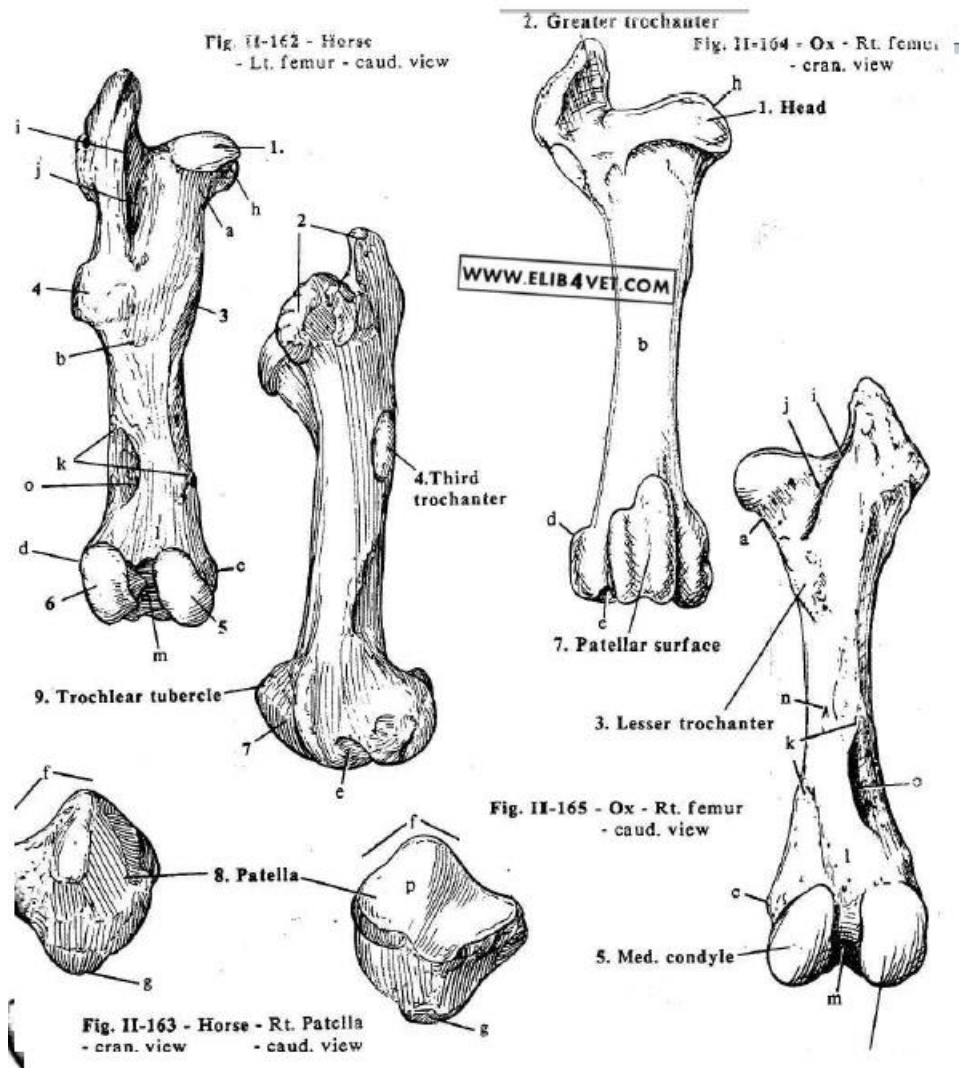
استخوان ران





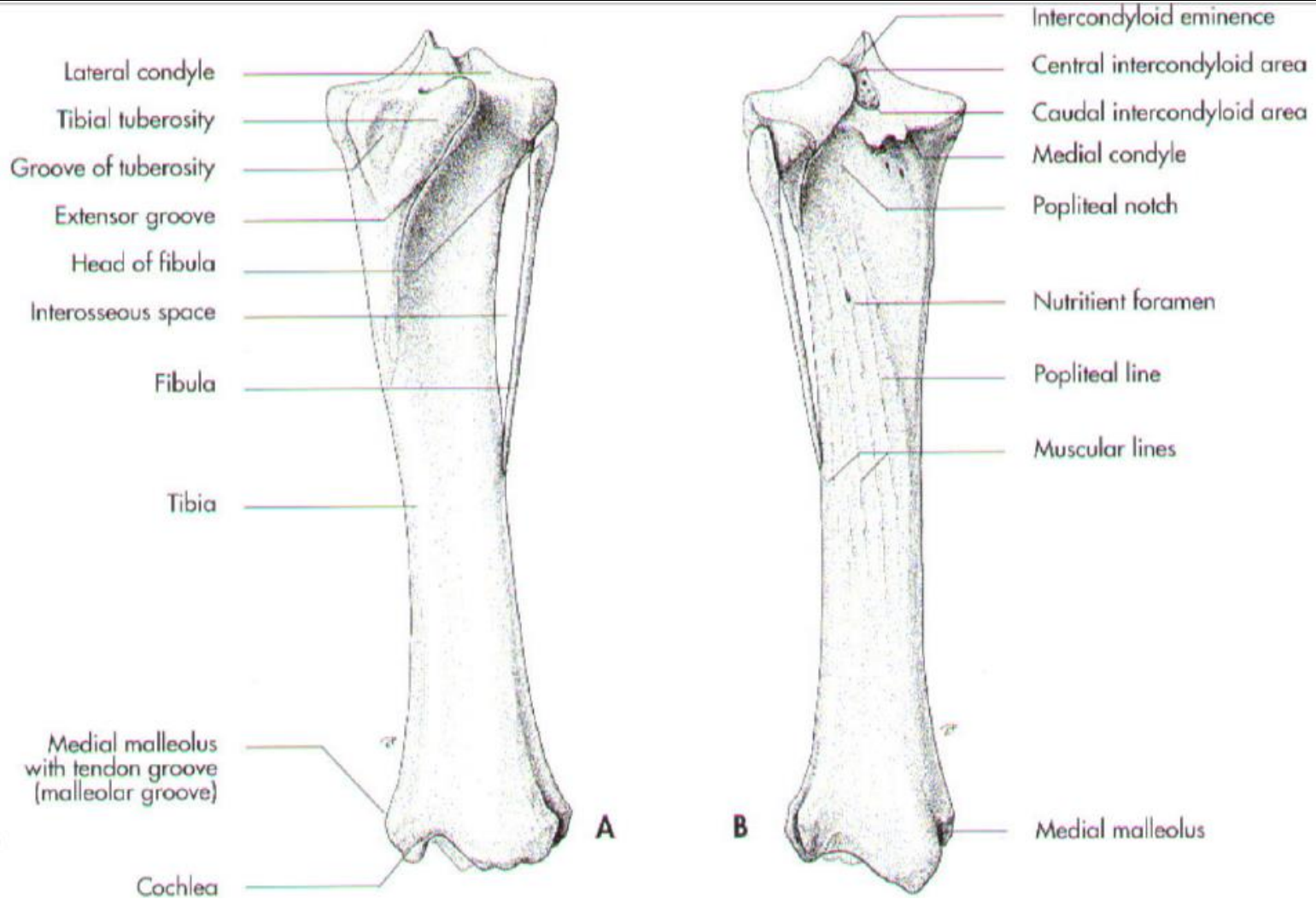
استخوان کشکک

Patella



Tibia & Fibula

درشت نی و نازک نی



TIBIA & FIBULA

Pelvic limb

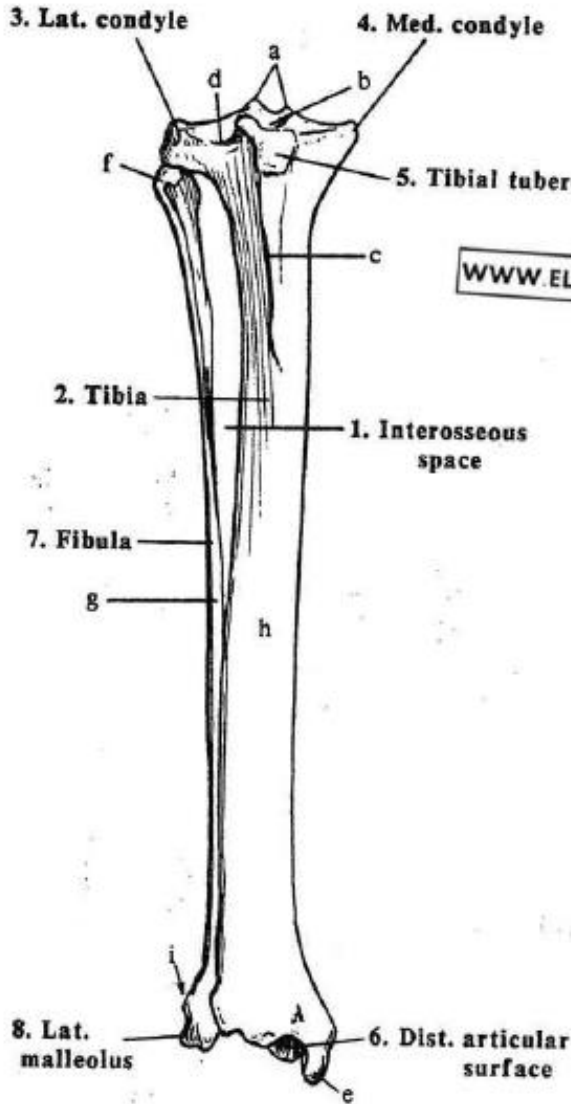
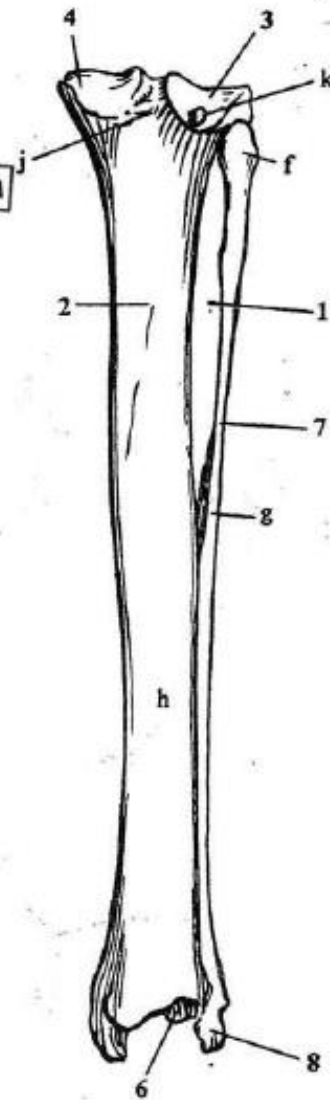


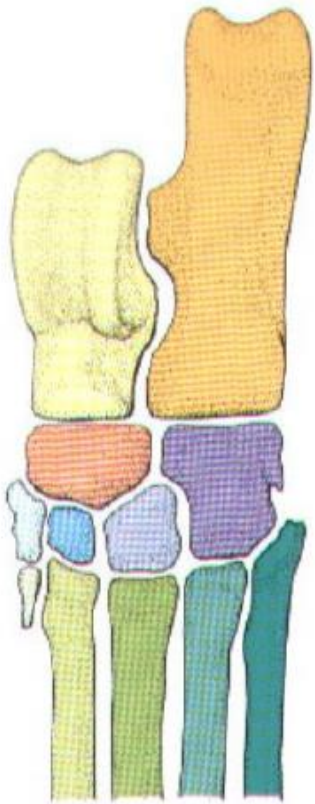
Fig. II-166 - Dog - Rt. tibia & fibula
- cran. view

Fig. II-167 - Dog - Rt. tibia
- caud. view

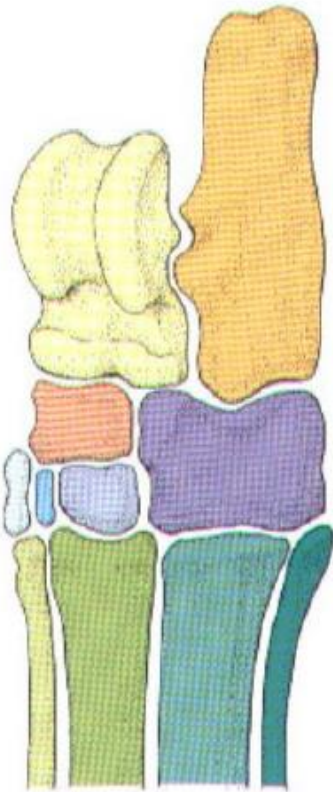


WWW.ELIB4VET.COM

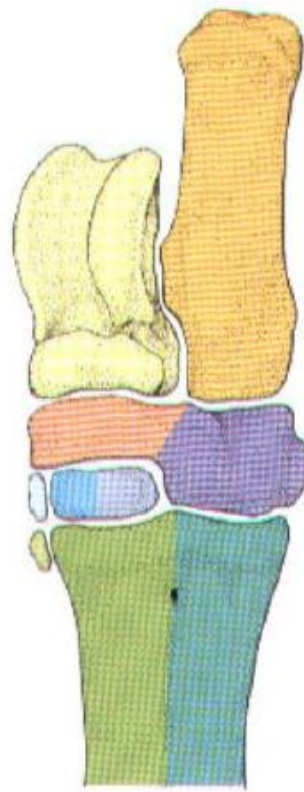
Tarsal bones



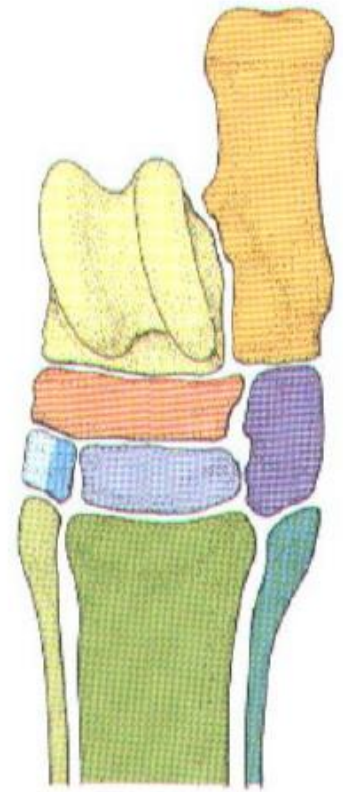
Dog



Pig



Ox



Horse